

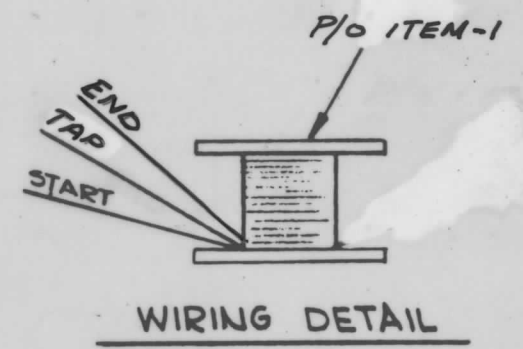
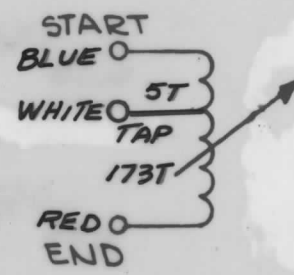
"Q" TEST FREQ.	"Q" MIN.	EXT. CAP. Q METER	NO. CODE	SYMBOL	INDUCTANCE
100KHZ	55	5600PF		T502	450 μ H + \pm 15 μ H

A4422

REVISIONS						
SYM	DESCRIPTION	DATE	E.M.N. NO.	DRAFT	CHKD	APPD
0	ORIGINAL RELEASE FOR PRODUCTION	2-16-64				Pho

WINDING PROCEDURE

- WIND 178 TURNS OF ITEM 3 ON ITEM 2, TAP AT 5 TURNS FROM START & STAKE WITH ITEM 4.
-
-
- BAKE COIL FOR 15 MIN. AT 150°F, REMOVE FROM OVEN AND COAT COIL WITH ITEM #5.
- COLOR CODE TERMINALS ON BASE AS SHOWN.
- STRIP AND TIN LEADS TO WITHIN 1/4" OF COIL.
- PLACE ITEM #2 OVER SLUG ON BASE, TAKING CARE TO POSITION NOTCHES ON RAISED PART OF BASE.
- SOLDER ALL LEADS TO PROPER COLOR-CODED TERMINALS ON BASE.
- ASSEMBLE AS PER ASSEMBLY DRAWING, PLACE IN CASE; BEND THE 4 TABS DOWN IN THE NOTCHES.
- DO NOT CUT OFF THE TWO LONG TABS.
-
- STAMP TMC PART NO. AS SHOWN ABOVE.
- TEST INDUCTANCE, AND Q AS SHOWN ABOVE.
- BAKE COMPLETED ASSEMBLY FOR ONE HOUR AT 212°F.
- REMOVE COMPLETED ASSEMBLY FROM OVEN AND ALLOW TO COOL TO ROOM TEMPERATURE.
- REPEAT STEP NO. 13.
-
- TUNE THE CORE INTO THE COIL TO REACH THE INDUCTANCE AS SHOWN ABOVE.
- TEST COIL WITH "Q" METER 260A (FOR "Q" ONLY).
- SET THE TEST FREQUENCY AS SHOWN ABOVE. AND SET THE (MULTIPLY "Q" X) TO 1.
- TUNE THE INDUCTANCE DIAL. TO REACH THE MAX. READING ON THE "Q" METER.

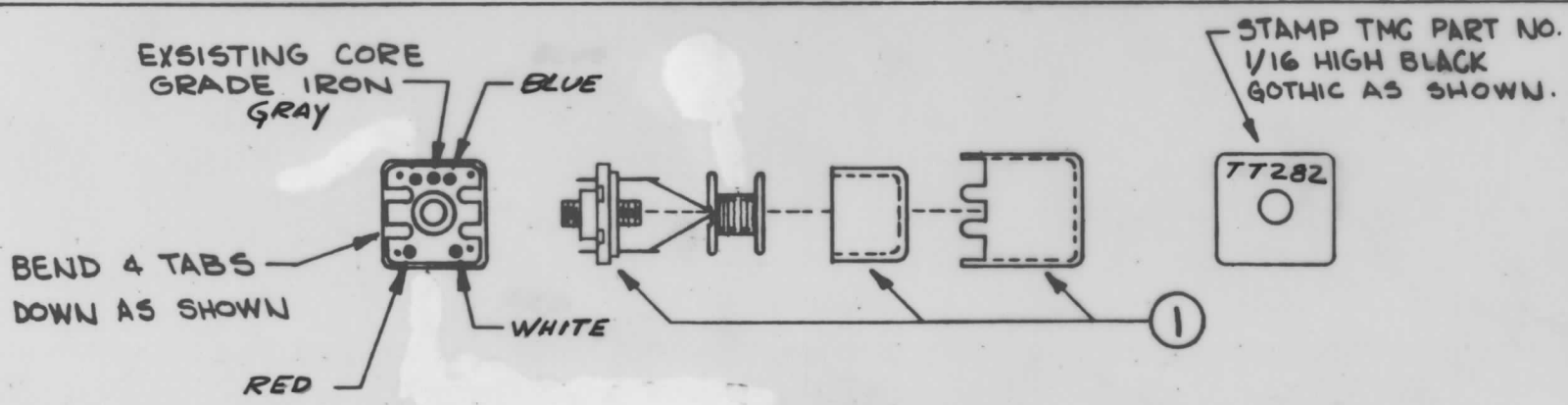


SCHMATIC DIAGRAM

REQ'D.	ITEM	PART NUMBER	DESCRIPTION	SYMBOL
X	6	BS-100	SOLDER, SOFT	
X	5	GL-130	ADHESIVE, Q-DOPE	
X	4	GL-103	ADHESIVE, N-CEL	
X	3	WI104-7/41SNQS	WIRE, ELECTRICAL, 21/32	
	2			
1	1	CI-136-1	CORE, ADJUSTABLE TUNING	

LIST OF MATERIAL

MATERIAL	THE TECHNICAL MATERIEL CORP. MAMARONECK, NEW YORK			
FINISH	TITLE TT282 TRANSFORMER, RF, ADJUSTABLE			
UNLESS OTHERWISE SPECIFIED DIMENSIONS ARE IN INCHES AND INCLUDE CHEMICALLY APPLIED OR PLATED FINISHES	DRAWN	DATE	FINAL APPROVAL	DATE
	J.L.	10-20-64	[Signature]	2/16/64
DECIMALS .X ± .05 .XX ± .01 .XXX ± .005	CHECKED	DATE	A4422	REV. LTR.
	[Signature]	2-15-64		
FRACTIONS ± 1/64 ANGLES ± 0° 30'	ELECT. DES.	DATE	SHEET	
	[Signature]	2-16-64		
MECH. DES.		DATE		



1	CDN-3	A4352
Q'TY./UNIT	MODEL USED ON	ASS'Y. NO.
SCALE	CODE	

THE CONTENTS OF THIS DRAWING ARE THE EXCLUSIVE PROPERTY OF THE TECHNICAL MATERIEL CORP. ITS UNAUTHORIZED USE OR REPRODUCTION IN WHOLE OR IN PART IS STRICTLY FORBIDDEN.

NOTES