

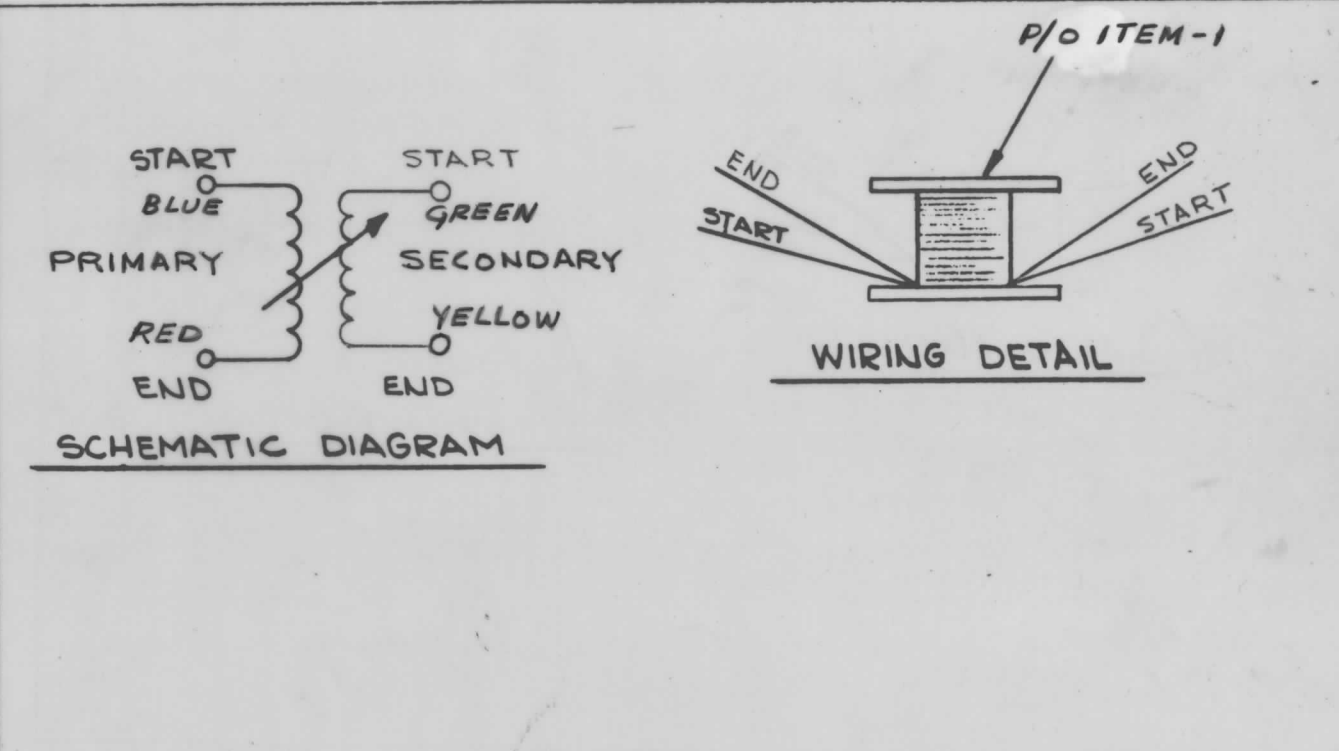
"Q" TEST FREQ.	"Q" MIN.	EXT. CAP. Q METER	NO. CODE	SYMBOL	INDUCTANCE
355 KHZ	80	1800 PF		T401,3	115UH + AND -15UH

A 4419

REVISIONS						
SYM	DESCRIPTION	DATE	E.M.N. NO.	DRAFT	CHKD	APPD
0	ORIGINAL RELEASE FOR PRODUCTION	2-16-66				

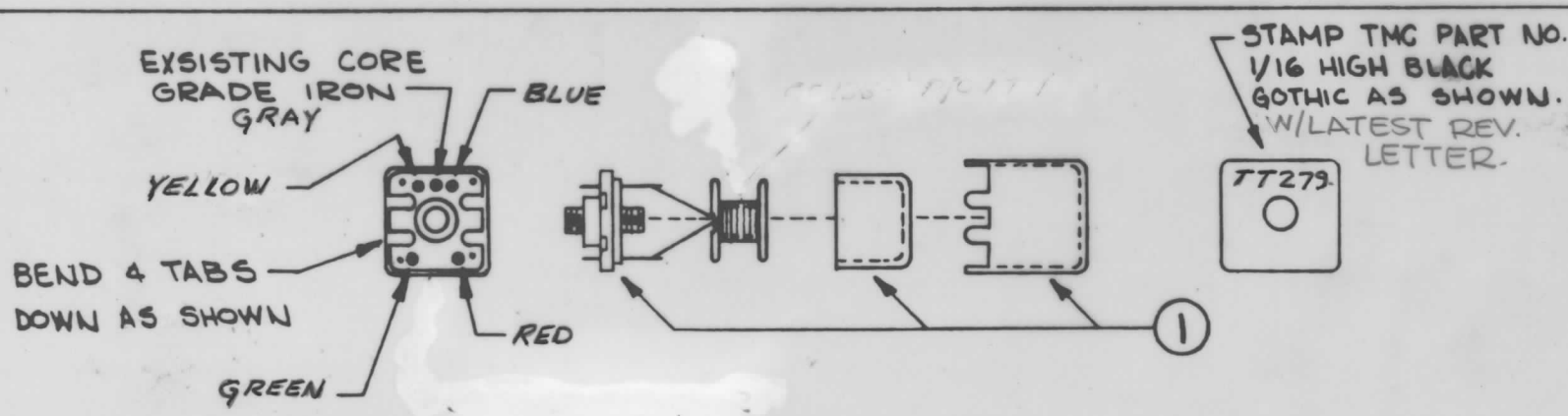
WINDING PROCEDURE

1. PRIMARY WIND 84 TURNS OF ITEM 3 ON ITEM 1, STAKE WITH ITEM 4.
2. SECONDARY- WIND 84 TURNS OF ITEM 2 OVER AND IN THE SAME DIRECTION STAKE WITH ITEM
3. SECONDARY WINDING MUST BREAK OUT FROM OPPOSITE SIDE OF PRIMARY.
4. BAKE COIL FOR 15 MIN. AT 150°F, REMOVE FROM OVEN AND COAT COIL WITH ITEM #5.
5. COLOR CODE TERMINALS ON BASE AS SHOWN.
6. STRIP AND TIN LEADS TO WITHIN 1/4" OF COIL.
7. PLACE ITEM #2 OVER SLUG ON BASE, TAKING CARE TO POSITION NOTCHES ON RAISED PART OF BASE.
8. SOLDER ALL LEADS TO PROPER COLOR-CODED TERMINALS ON BASE.
9. ASSEMBLE AS PER ASSEMBLY DRAWING, PLACE IN CASE; BEND THE 4 TABS DOWN IN THE NOTCHES.
10. DO NOT CUT OFF THE TWO LONG TABS.
- 11.
12. STAMP TMC PART NO. AS SHOWN ABOVE.
13. TEST INDUCTANCE, AND Q AS SHOWN ABOVE.
14. BAKE COMPLETED ASSEMBLY FOR ONE HOUR AT 212°F.
15. REMOVE COMPLETED ASSEMBLY FROM OVEN AND ALLOW TO COOL TO ROOM TEMPERATURE.
16. REPEAT STEP NO. 13.
- 17.
18. TUNE THE CORE INTO THE COIL TO REACH THE INDUCTANCE AS SHOWN ABOVE.
19. TEST COIL WITH "Q" METER 260A (FOR "Q" ONLY).
20. SET THE TEST FREQUENCY AS SHOWN ABOVE. AND SET THE (MULTIPLY "Q" X) TO 1.
21. TUNE THE INDUCTANCE DIAL. TO REACH THE MAX. READING ON THE "Q" METER.



REQ'D.	ITEM	PART NUMBER	DESCRIPTION	SYMBOL
X	6	BS-100	SOLDER, SOFT	
X	5	GL-130	ADHESIVE, Q-DOPE	
X	4	GL-103	ADHESIVE, N-CEL	
X	3	WI104-7/435NQS	WIRE, ELECTRICAL, LITE	
X	2	WI104-7/435NQS	WIRE, ELECTRICAL, LITE	
1	1	CI-136-1	CORE, ADJUSTABLE TUNING	

LIST OF MATERIAL			
MATERIAL		THE TECHNICAL MATERIEL CORP.	
FINISH		MAMARONECK, NEW YORK	
TITLE		TT 279	
DRAWN		TRANSFORMER, RF, ADJUSTABLE	
CHECKED		DATE	FINAL APPROVAL
ELECT. DES.		DATE	DATE
MECH. DES.		DATE	DATE
SHEET		REV. LTR.	



2	CDN-3	A4350
QTY./UNIT	MODEL USED ON	ASS'Y. NO.
SCALE	CODE	

NOTES

THE CONTENTS OF THIS DRAWING ARE THE EXCLUSIVE PROPERTY OF THE TECHNICAL MATERIEL CORP. ITS UNAUTHORIZED USE OR REPRODUCTION IN WHOLE OR IN PART IS STRICTLY FORBIDDEN.

DECIMALS	TOLERANCES	FRACTIONS
.X ± .05		± 1/64
.XX ± .01		ANGLES
.XXX ± .005		± 0° 30'