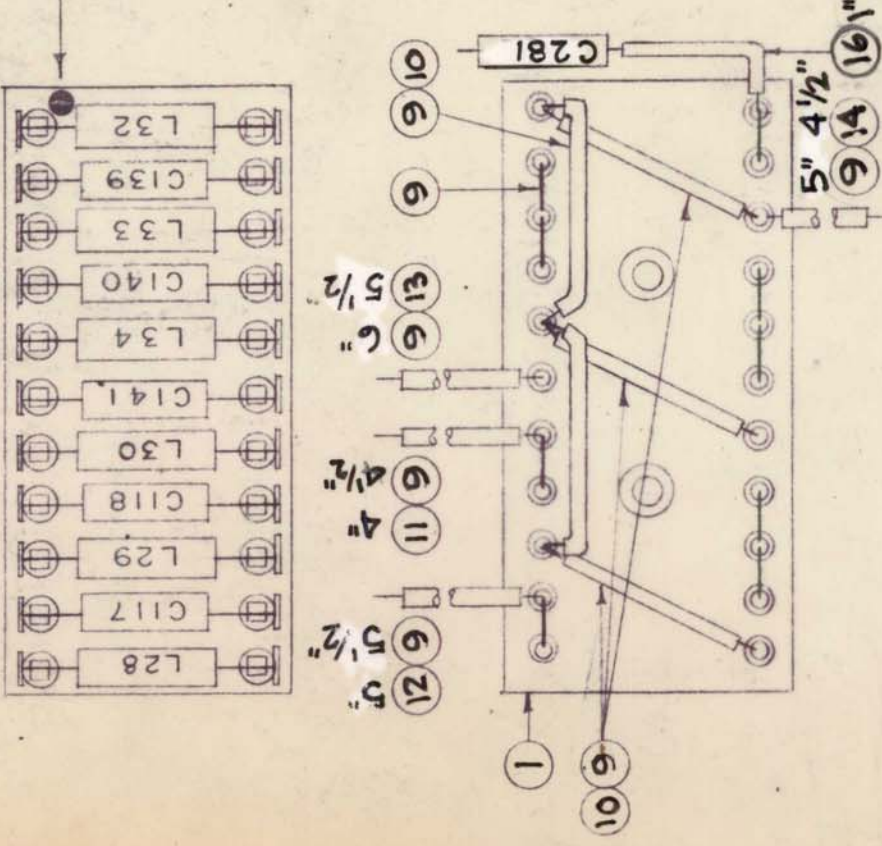


A4411 B

REQ. PER UNIT	MODEL	ASSY. NO.	DATE
1	GPR-92A	A5427	1-24-66

YELLOW DOT - AT LEAST 1/8 DIA.



16	PX-104-4-.022	INSULATION, SLEEVING	GRN
X 15	BS-100	SOLDER, SOFT	
14	PX-104-9-.022	INSULATION, SLEEVING	VIO.
13	PX-104-3-.022		RED
12	PX-104-6-.022		BLUE
11	PX-104-2-.022		YEL
X 10	PX-104-1-.022	INSULATION, SLEEVING	BLK.
X 9	WL-100-7	WIRE, BUSS BAR	
2 8	CM15F11G03	CAPACITOR, FIXED	C281
2 7	CM15C56G03	CAPACITOR, FIXED	C139
2 6	CM15F151G03	CAPACITOR, FIXED	C140
3 5	A-1345	COIL ASSY.	C117
4	DELETED		C118
1 3	A-1077	COIL ASSY	L29
2 2	CL180	COIL ASSY	L30
1 1	A-1346	TERMINAL BD. SUB ASSY	L28

REQ. ITEM	PART NO.	DESCRIPTION	SYMBOL
		LONGHI	
THE TECHNICAL MATERIEL CORP. MAMARONECK, NEW YORK			
TERM. BD. ASSEMBLY, HI PASS			
FILTER			
GPR-92A			
JAD 17/31/65			
DRAWN			
CHECKED			
FINAL APPROVAL			
ELEC. DES. APP. MECH. DES. APP.			
FINISH & SPEC. NO.			
A4411 B			

DELG. LGTHS ON B/M; REV. LGTHS. ON PICT.	3/8/66	15862	HLA	HLA	HLA	HLA	HLA	HLA
REV. IT. 2, 6, 7, 8, 12 & 13	1/24/66	15622	HLA	HLA	HLA	HLA	HLA	HLA
ORIGINAL RELEASE	1/4/65							
ISSUE ITEM	CHANGED FROM	DATE	CH. NO.	DRAFTS	CHECKER	ENG. APP.		
B								
A								
Ø								

TOLERANCES

MAXIMUM ALLOWABLE TOLERANCES HAVE BEEN DETERMINED AND ANY DEVIATIONS WILL BE CAUSE FOR REJECTION. REMOVE ALL BURRS AND SHARP EDGES