

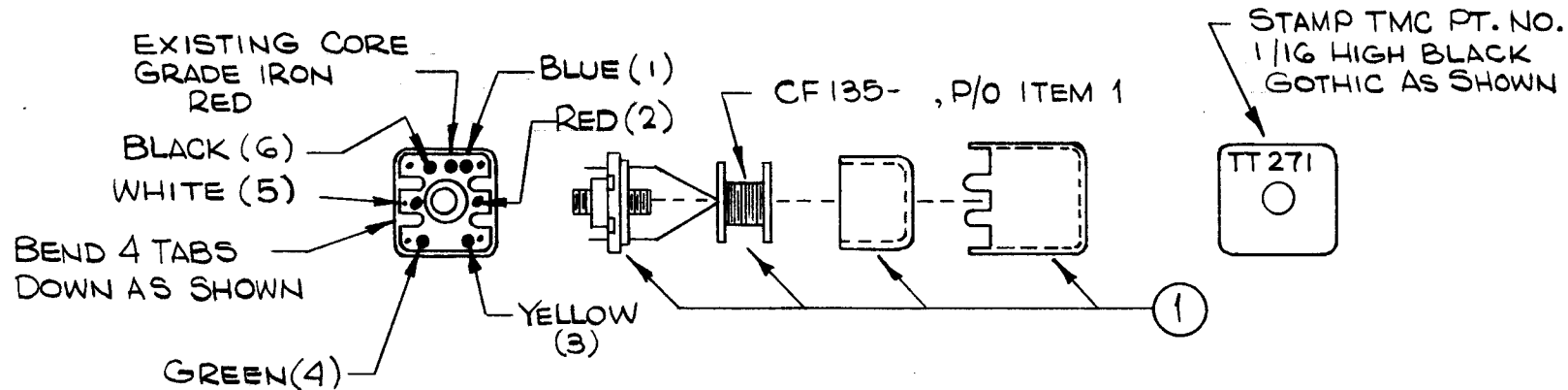
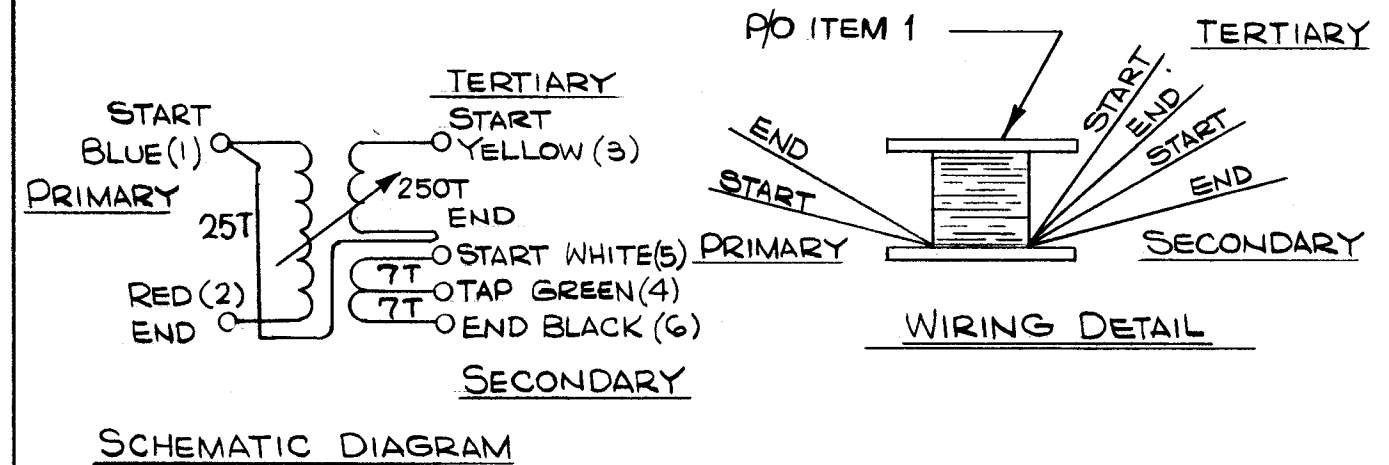
"Q" TEST FREQ.	"Q" MIN.	SYMBOL	INDUCTANCE
400KC	50	T202 T204	400 uh + AND =10%

REVISIONS						
SYM	DESCRIPTION	DATE	E.M.N. NO.	DRAFT	CHKD	APPD
Ø	ORIGINAL RELEASE FOR PRODUCTION	8-19-65	H	E		

W I N D I N G   P R O C E D U R E

1. TERTIARY: Wind 250 Turns of Item #3 On item #1. Stake with item #4.
2. PRIMARY: Wind 25 turns of Item #3 over tertiary winding and in same direction.
3. SECONDARY: Wind 14 turns of item #3 over tertiary and primary windings and in same direction. Tap at 7 turns. Stake with Item #4.
4. Bake coil for 15 minutes at 150°F. Remove from oven and coat with Item #5.
5. Color code terminals on base as shown.
6. Strip and tin leads to within 1/4" of coil.
7. Place bobbin over slug on base taking care to position notches on raised part of base.
8. Solder start of tertiary winding to YELLOW (3).
9. Solder start of primary winding to BLUE (1) and end of tertiary winding.
10. Solder end of primary to RED(2).
11. Solder start of secondary winding to WHITE (5), tap to GREEN (4) and end to BLACK(6).
12. Assemble as per cable drawing. Place in case, bend the tabs down in the notches. DO NOT CUT OFF THE 2 LONG TABS.
13. Stamp TMC Part No. as shown..
14. Test inductance and 'Q' as shown.
15. Bake completed assembly for 1 hour at 212°F.
16. Remove from oven and allow to cool to room temperature.
17. Repeat Step No. 13.

A4331



REQ'D.	ITEM	PART NUMBER	DESCRIPTION	SYMBOL
X	5	GL130	ADHESIVE, Q-DOPE	
X	4	GL103	ADHESIVE, N-CEL	
X	3	WI104-3/43 SNQS	WIRE, ELECTRICAL, LIFE	
X	2	BS100	SOLDER, SOFT	
1	1	CI136-3	CORE, ADJUSTABLE TUNING	

LIST OF MATERIAL

MATERIAL	THE TECHNICAL MATERIEL CORP. MAMARONECK, NEW YORK			
FINISH	TITLE TT-271			
UNLESS OTHERWISE SPECIFIED DIMENSIONS ARE IN INCHES AND INCLUDE CHEMICALLY APPLIED OR PLATED FINISHES		TRANSFORMER, RF, ADJUSTABLE		
DECIMALS .X ± .05 .XX ± .01 .XXX ± .005	TOLERANCES	FRACTIONS ± 1/64 ANGLES ± 0° 30'	DRAWN H. AUSTIN DATE 8-17-65	FINAL APPROVAL <i>[Signature]</i> DATE 8/19/65
THE CONTENTS OF THIS DRAWING ARE THE EXCLUSIVE PROPERTY OF THE TECHNICAL MATERIEL CORP. ITS UNAUTHORIZED USE OR REPRODUCTION IN WHOLE OR IN PART IS STRICTLY FORBIDDEN.		ELECT. DES. <i>[Signature]</i> MECH. DES.		
NOTES		A4331		
Q'TY./UNIT 2		MODEL USED ON VLRE-1		
SCALE #		ASS'Y. NO. AX599 A4299		
CODE A		SHEET		
		REV. LTR.		