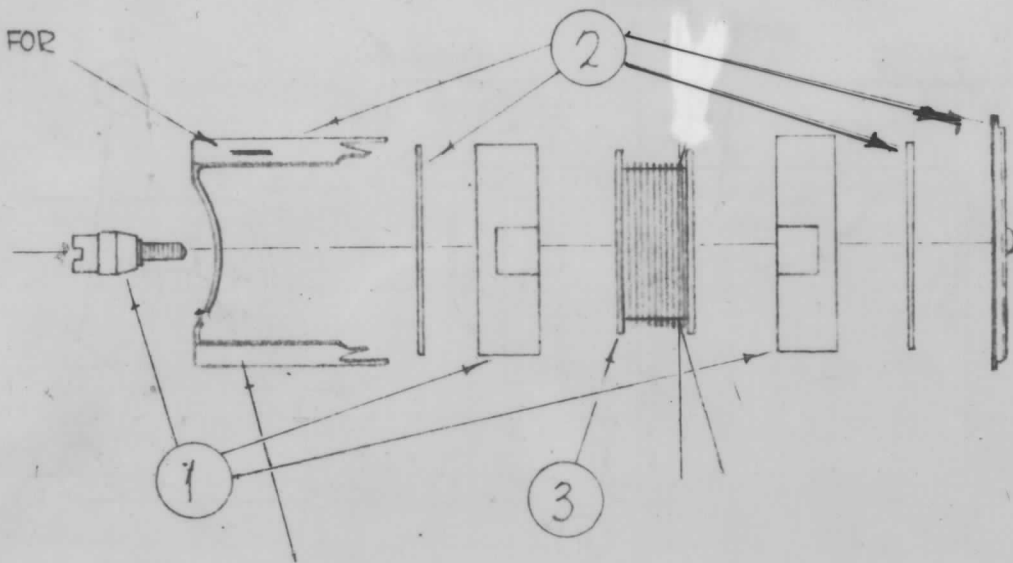


TEST FREQ.	INDUCTANCE	"Q"	WIRE	NO. CODE	SYMBOL	BAND
79.5 KC	32 MH ± 0.5MH	100	36	RED DOT	L4	

SEE TABLE FOR No. CODE



STAMP TMC NO.
3/32 HIGH BLACK
GOTHIC W/LATEST
REVISION LETTER

- PRIMARY WIND 530 TURNS OF ITEM 6 ON ITEM 3 STAKE WITH ITEM 5.
- ~~DELETED.~~
- ~~DELETED.~~
- KEEP ALL LEADS 1 1/2" LONG.
- STRIP AND TIN ALL LEADS TO WITHIN 3/4" OF COIL.
- COLOR CODE ALL LEADS AS SHOWN IN WIRING DETAIL.
- BAKE COIL FOR 15 MIN. AT 150°F REMOVE FROM OVEN AND COAT COIL WITH ITEM #4.
- PLACE ITEM 3 INSIDE OF ITEM 1 AND ASSEMBLE AS PER ASSEMBLY DRAWING.
- BEND THE FOUR SMALL TABS DOWN.
- NO. CODE THE COIL ON THE SIDE AS SHOWN.
- STAMP TMC PART NO. AS SHOWN.
- TEST INDUCTANCE, AND "Q" AS SHOWN ABOVE. (w/o SLUG)
- BAKE COMPLETED ASSEMBLY FOR ONE HOUR AT 212°F.
- REMOVE COMPLETED ASSEMBLY FROM OVEN AND ALLOW TO COOL TO ROOM TEMPERATURE.
- REPEAT STEP NO. 12.

**NOT TO BE RELEASED
W/O AUTHORIZATION**

AUTH. BY _____
DATE: _____

1	CMRA-1	A-4216
Q'TY./UNIT	MODEL USED ON	ASS'Y. NO.
+	A	
SCALE	CODE	

THE CONTENTS OF THIS DRAWING ARE THE EXCLUSIVE PROPERTY OF THE TECHNICAL MATERIEL CORP. ITS UNAUTHORIZED USE OR REPRODUCTION IN WHOLE OR IN PART IS STRICTLY FORBIDDEN.

NOTES

A4258 B.

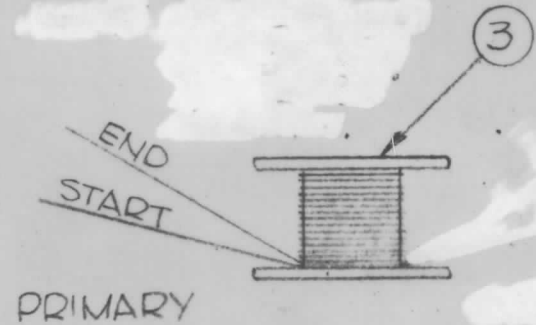
REVISIONS						
SYM	DESCRIPTION	DATE	E.M.N. NO.	DRAFT	CHKD	APPD
X	EXPERIMENTAL RELEASE	5-7-65		H/A		
Ø	RELEASE FOR PRODUCTION	5/14/65	Ø			
A	IND. WAS 28 MH, PRI. TURNS WAS 500.	8-9-65	14636	D.V.V.	Ø/Ø	M/M
B	ITEM 2 WAS CUI58	12.6.66	17409	W/D	Ø/Ø	Ø/Ø

PRIMARY

START

END

SCHEMATIC, DIAGRAM



PRIMARY

WIRING DETAIL

REQ'D.	ITEM	PART NUMBER	DESCRIPTION	SYMBOL
X	8	BS-100	SOLDER, SOFT	
X	7			
X	6	WI-141-36-9	WIRE, ELEC	
X	5	GL103	ADHESIVE, N-CEL	
X	4	GL130	ADHESIVE, Q-DOPE	
1	3	CF135-5	FORM, COIL, 2 FLANGE	
1	2	CUI58-2	RETAINER	
1	1	CI137-5	CORE, ADJUSTABLE, TUNING	

LIST OF MATERIAL			
MATERIAL	THE TECHNICAL MATERIEL CORP. MAMARONECK, NEW YORK		
FINISH	TITLE COIL ASSY, AC 211 SYN-A-L4		
UNLESS OTHERWISE SPECIFIED DIMENSIONS ARE IN INCHES AND INCLUDE CHEMICALLY APPLIED OR PLATED FINISHES	DRAWN H. AUGSTIN	DATE 5-7-65	FINAL APPROVAL M/May
DECIMALS .X ± .05 .XX ± .01 .XXX ± .005	CHECKED JLO	DATE 5-14-65	DATE 5/14/65
FRACTIONS ± 1/64 ANGLES ± 0° 30'	ELECT. DES. JH	DATE 5/14/65	DATE 5/14/65
TOLERANCES	MECH. DES.	DATE	DATE
			A4258
			B
			SHEET
			REV. LTR.