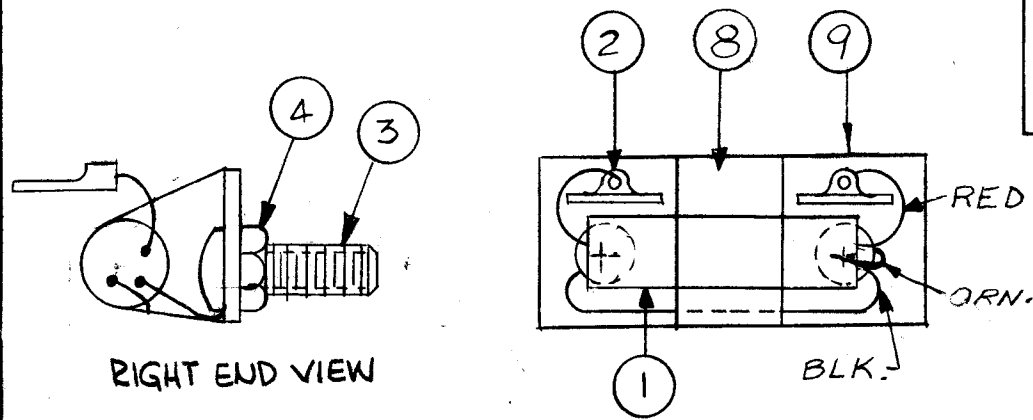
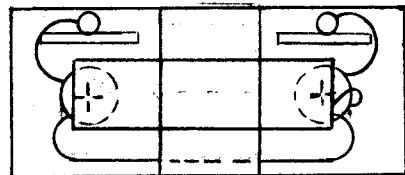


PICTORIAL -A-

PICTORIAL -B-



A
A4236

NOTE:
ABOVE ASSY IS IDENTICAL TO THAT SHOWN IN PICTORIAL -B- WITH EXCEPTION TO ITEM-1 AND WIRING.

ASSY NO.	ITEM NO. 1	PICTORIAL
A4236-1	NW126-1	B
A4236-2	NW126-2	A

NOTES:
1- SECURE ITEM-1 TO ITEM-9 WITH ONE (1) WRAP OF ITEM-8.
2- SOLDER USING ITEM-6 ALL LEADS CONNECTED TO ITEM-2.
3- WRAP LEADS UNDER HEADS OF ITEM-3 & FASTEN IN PLACE WITH ITEM-4.
4- MOLD ENTIRE ASS'Y TO DIMENSIONS PER DWG. NO. NW128 USING ITEM-7.
5- ADD (2) ITEM #4 & (4) ITEM #5 AFTER POTTING.

NOTES

1	GPT-10K	
Q'TY./UNIT	MODEL USED ON	ASS'Y. NO.
SCALE	CODE	
THE CONTENTS OF THIS DRAWING ARE THE EXCLUSIVE PROPERTY OF THE TECHNICAL MATERIEL CORP. ITS UNAUTHORIZED USE OR REPRODUCTION IN WHOLE OR IN PART IS STRICTLY FORBIDDEN.		

REVISIONS						
SYM	DESCRIPTION	DATE	E.M.N. NO.	DRAFT	CHKD	APPD
Ø	ORIGINAL RELEASE FOR PRODUCTION	4/20/65	-M-	J.L.		
A	IT.4 WAS NTH 2520 BNG. PICT COMPLETELY REVISED	10/15/65	14988	A.V.V.	<i>[Signature]</i>	<i>[Signature]</i>

REQ'D.	ITEM	PART NUMBER	DESCRIPTION	SYMBOL
	1	9	PX 932	TERMINAL BOARD
	X	8	TA 108-1	TAPE, THERMOSETTING
	X	7	GL 106	COMPOUND (PLASTIC) CASTING
	X	6	BS 100	SOLDER, SOFT
	4	5	FW 25 HBN	WASHER, FLAT
	4	4	NTH 2520 BNI 4	NUT, HEXAGON
	2	3	SCBP 2520 BNI 2	SCREW, MACHINE, PAN HEAD
	2	2	TE 141-4	TERMINAL LUG, SOLDERLESS
	1	1	SEE CHART	NETWORK, METER PROTECTIVE

BUDETTI		LIST OF MATERIAL			
MATERIAL		THE TECHNICAL MATERIEL CORP. MAMARONECK, NEW YORK			
FINISH		TITLE NW128 ASSEMBLY			
UNLESS OTHERWISE SPECIFIED DIMENSIONS ARE IN INCHES AND INCLUDE CHEMICALLY APPLIED OR PLATED FINISHES		DRAWN J.L.	DATE 4-15-65	FINAL APPROV. <i>[Signature]</i>	DATE 4/20/65
DECIMALS .X ± .05 .XX ± .01 .XXX ± .005		CHECKED <i>[Signature]</i>	DATE 4-20-65	A4236	
TOLERANCES		ELECT. DES. <i>[Signature]</i>	DATE 4/20/65	A	
FRACTIONS ± 1/64 ANGLES ± 0° 30'		MECH. DES. <i>[Signature]</i>	DATE 4/20/65	SHEET	
				REV. LTR.	