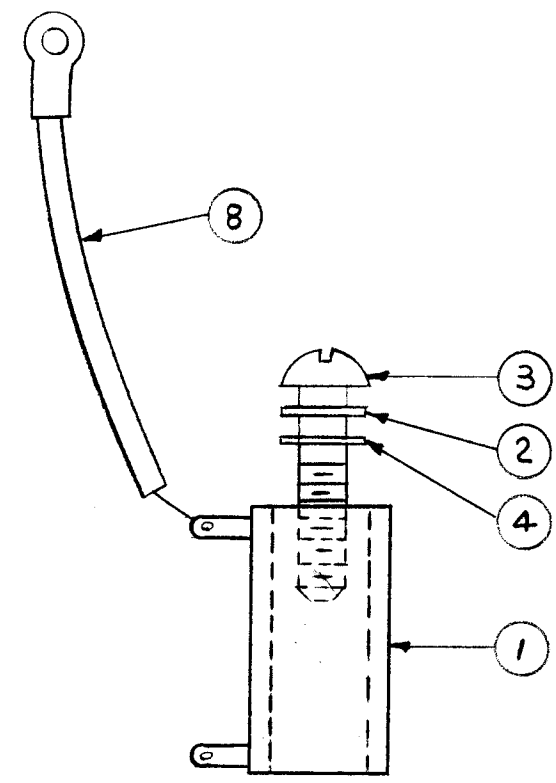
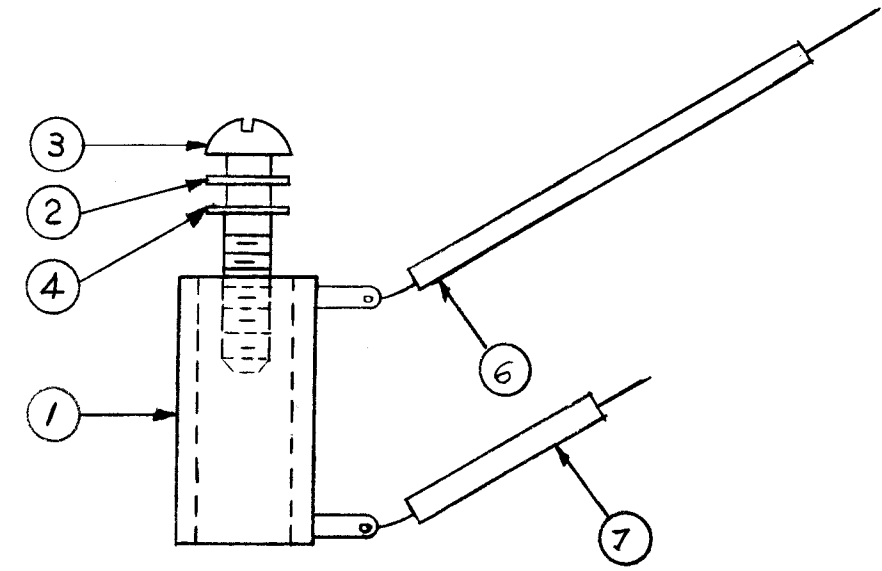


A4235

REVISIONS					
SYM	DESCRIPTION	DATE	E.M.N. NO.	DRAFT	CHKD APPD
Ø	ORIGINAL RELEASE FOR PRODUCTION	4-21-65	-11	CJL	
A	ITEMS 6 AND 7 REVERSED	11-30-65	15256	H.V.V.	JDB MHA



A4235-1



A4235-2

REQ'D.	ITEM	PART NUMBER	DESCRIPTION	SYMBOL
X	9	BS-100	SOLDER, SOFT	
1	8	CA377-5	LEAD, ELECTRICAL	
1	7	CA377-11	LEAD, ELECTRICAL	
1	6	CA377-1	LEAD, ELECTRICAL	
1	5	PX931	STANDOFF, RESISTOR, MOUNT	
1	4	WA109-56	WASHER, NM	
1	3	SCBP1032BN24	SCREW, MACHINE	
1	2	FW10HBN	WASHER, FLAT	
1	1	RW111-7	RESISTOR, FIXED, WW, 25W	

BUDETTI		LIST OF MATERIAL	
MATERIAL		THE TECHNICAL MATERIEL CORP. MAMARONECK, NEW YORK	
FINISH		TITLE RESISTOR ASSEMBLY, WIREWOUND	
UNLESS OTHERWISE SPECIFIED DIMENSIONS ARE IN INCHES AND INCLUDE CHEMICALLY APPLIED OR PLATED FINISHES		DRAWN CLANZA DATE 4-21-65	FINAL APPROVAL  DATE 4/28/65
DECIMALS .X ± .05 .XX ± .01 .XXX ± .005		FRACTIONS ± 1/64 ANGLES ± 0° 30'	DATE 4/28/65 SHEET A4235
TOLERANCES 		MECH. DES. 	DATE REV. LTR. A

1	KIT 232A	
Q'TY./UNIT	MODEL USED ON	ASS'Y. NO.
SCALE	CODE A	

THE CONTENTS OF THIS DRAWING ARE THE EXCLUSIVE PROPERTY OF THE TECHNICAL MATERIEL CORP. ITS UNAUTHORIZED USE OR REPRODUCTION IN WHOLE OR IN PART IS STRICTLY FORBIDDEN.

NOTES