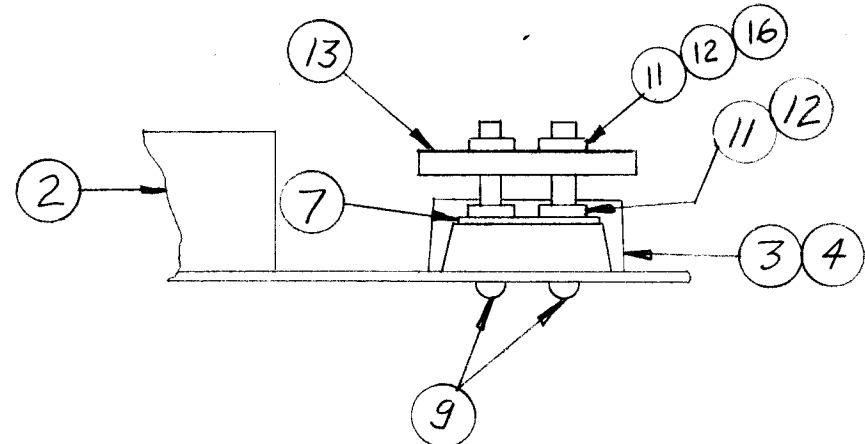


- YEL — TERM 1
 - WHI — TERM 2
 - VIO — TERM 3
 - BLK — TERM 4
- TB 3005



A4226

REVISIONS

SYM	DESCRIPTION	DATE	E.M.N. NO.	DRAFT	CHKD	APPD
X1	ITEM 16 ADDED - BUILD-UP CLARIFIED	4-14-66	X1	G.D.L		
Ø	ORIGINAL RELEASE FOR PRODUCTION	4-29-66	Ø	WFW		HQ

REQ'D.	ITEM	PART NUMBER	DESCRIPTION	SYMBOL
4	16	FWO4HBN	WASHER, FLAT	
	15	BS100	SOLDER, TIN ALLOY	
	14	PX830-12-1	INSULATION, SLEEVING, SHRINK	
1	13	LD880/PX544-A	LETTERING, INSULATOR, TERMINAL	
8	12	NTH0440BING	NUT, HEX HEAD	
8	11	LWE04MRN	LOCKWASHER, EXTERNAL	
8	10	LWE06MRN	LOCKWASHER, EXTERNAL	
4	9	SCBP0440BN16	SCREW, MACHINE	
8	8	SCBP0632BN8	SCREW, MACHINE	
2	7	MS154-1	PLATE, STRADDLE	
1	6	CA409-32-2.00	CABLE, JUMPER	
1	5	CA550	WIRING HARNESS, BRANCHED	
1	4	PX336-4	INSULATION, PAPER	
1	3	TM102-4	TERMINAL STRIP	
2	2	BL106-2	FAN	
1	1	MS4481/LD1837	PLATE, MFG, REAR FAN	

B.NAP

LIST OF MATERIAL

THE TECHNICAL MATERIEL CORP.
MAMARONECK, NEW YORK

FINISH

TITLE
ASSEMBLY, REAR FAN

UNLESS OTHERWISE SPECIFIED
DIMENSIONS ARE IN INCHES AND INCLUDE
CHEMICALLY APPLIED OR PLATED FINISHES

DECIMALS .X ± .05 .XX ± .01 .XXX ± .005	TOLERANCES	FRACTIONS ± 1/64 ANGLES ± 0° 30'
--	------------	---

DRAWN B.N.	DATE 29/4/65	FINAL APPROVAL [Signature]	DATE 4/29/66
CHECKED [Signature]	DATE 7/22/65	A4226	
ELECT. DES. [Signature]	DATE	SHEET	
MECH. DES.	DATE	REV. LTR.	

M/1 [Signature] 5/2/66

NOTES

1	TSTE 10K/AX563	
Q'TY./UNIT	MODEL USED ON	ASS'Y. NO.
SCALE	CODE	

THE CONTENTS OF THIS DRAWING ARE THE EXCLUSIVE PROPERTY OF THE TECHNICAL MATERIEL CORP. ITS UNAUTHORIZED USE OR REPRODUCTION IN WHOLE OR IN PART IS STRICTLY FORBIDDEN.