
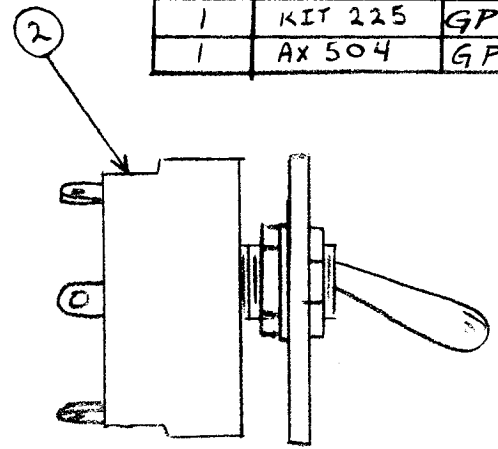
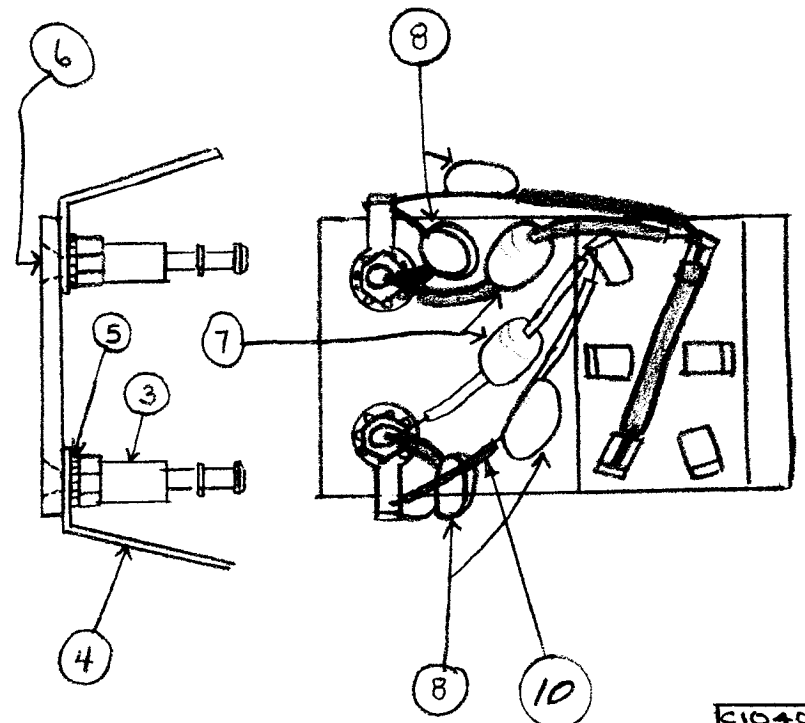


REQ. PER UNIT	USED ON		
	MODEL	ASSY. NO.	DATE
1	KIT 161	GPT 40K	5/18/65
1	KIT 225	GPT 40K	5/18/65
1	AX 504	GPT 40K	5-18-65


A 4223 







ALL OTHER SLEEVING IS ITEM 9

C1040, 41  
42, 43

X	11	B $\frac{1}{2}$ 100	SOLDER, TIN ALLOY	
1	10	PX104-1-034	INS SLVG - NO 20	BLK
6	9	PX104-6-034	INS SLVG - NO 20	BLUE
4	8	CC100-16	CAPACITOR, FIXED, CER	
2	7	CL140-1	COIL, RF, FIXED	L1005 L1006
2	6	SCFPD440BN3	SCREW, MACHINE	
2	5	LWED4MRN	WASHER, LOCK, EXTERNAL	
2	4	TE116-1	TERMINAL, LUG - NO 4	
2	3	TE102-2	TERMINAL, STUD - INSULATED	
1	2	ST105	SWITCH, TOGGLE DPDT	S1017
1	1	LD1539/MS 3499	BRACKET, COMPONENT, MTC	
REQ.	ITEM	PART NO.	BUDETTI DESCRIPTION	SYMBOL

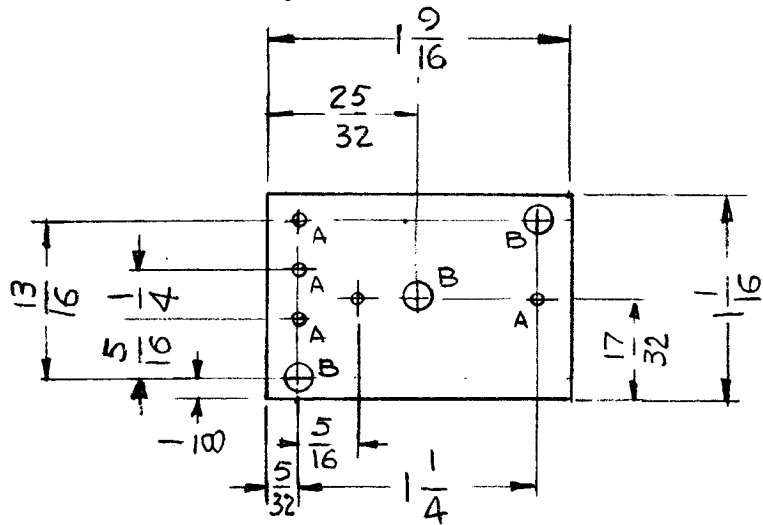
SYM	DESCRIPTION	DATE	CH. NO.	DRAFTS	CHECKER	ENG. APP.
	ORIGINAL RELEASE FOR PRODUCTION	6/4/65	LC			
UNLESS OTHERWISE SPECIFIED DIMENSIONS ARE IN INCHES AND INCLUDE CHEMICALLY APPLIED OR PLATED FINISHES		SCALE				
DECIMALS .X $\pm$ .05 .XX $\pm$ .01 .XXX $\pm$ .005	TOLERANCES	FRACTIONS $\pm$ 1/64 ANGLES $\pm$ 0° 30'	CODE			

STOCK SIZE		THE TECHNICAL MATERIEL CORP. MAMARONECK, NEW YORK	
MATERIAL		ALDC, ASSY	
TYPE & TEMPER	HEAT TREAT. SPEC.	DRAWN	CHECKED
FINISH & SPEC. NO.		ELEC. DES. APP.	MECH. DES. APP.
		  	
		A 4223 	

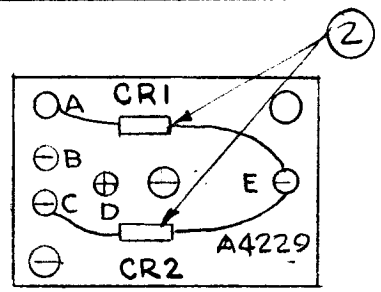
HOLES —

A - 5/64 DIA (5 REQ.)

B - 5/32 DIA (2 REQ.)

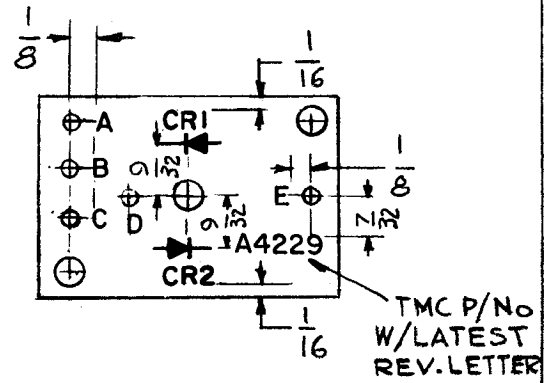


MACHINING (A 4229-1)  
1/16 THK. XXXP PHENOLIC, NATURAL

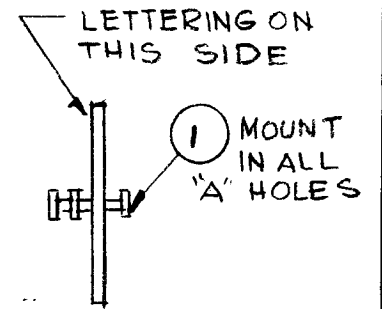


FINAL ASSY (A 4229-4)

REQ. PER UNIT	USED ON			A 4229	Ø
	MODEL	ASS'Y. NO.	DATE		
1	5BE-2A	A4230	4-12-65		



LETTERING (A 4229-2)



SUB-ASSY (A 4229-3)

MARKING PROCESS: AS PER TMC SPECIFICATION S-727.

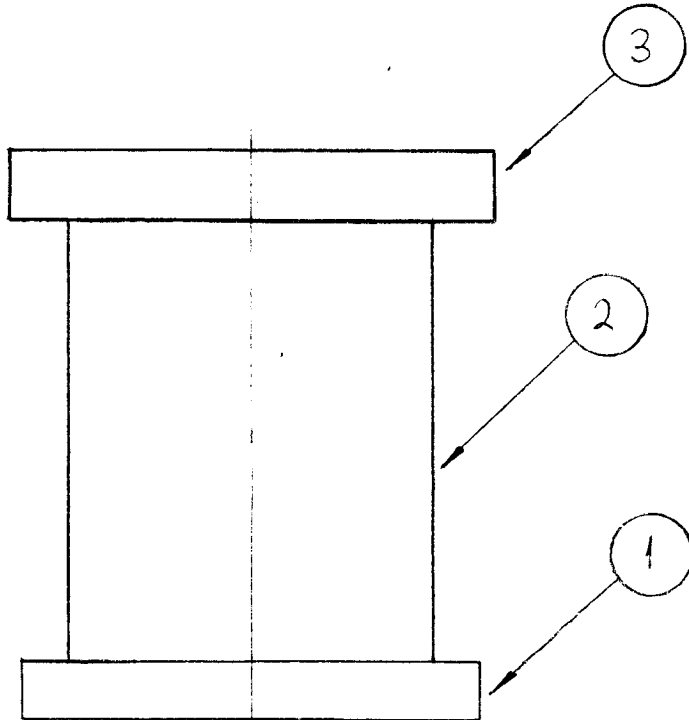
LETTERING: 3/32 HIGH BLACK GOTHIC, LOCATED AS SHOWN.

X	3	BS 100	SOLDER, TIN ALLOY	
2	2	IN34A	DIODE, XTAL	CR1, CR2
5	1	TE 16B-4	TERMINAL, STUD	A
REQ. ITEM	PART NO.		DESCRIPTION	SYMBOL
★ STOCK SIZE			THE TECHNICAL MATERIEL CORP. MAMARONECK, NEW YORK	
★ MATERIAL			TERMINAL BOARD (HF MODULATOR)	
★	★	G.D.L.	QCB	Jae
TYPE & TEMPER	HEAT TREAT. SPEC.	DRAWN	CHECKED	FINAL APPROVAL
★ FINISH & SPEC. NO.		ELEC. DES. APP.	MECH. DES. APP.	A 4229 Ø

Ø ORIGINAL RELEASE	4-15-65	G.D.L.				
SYM	DESCRIPTION	DATE	CH. NO.	DRAFTS	CHECKER	ENG. APP.
UNLESS OTHERWISE SPECIFIED DIMENSIONS ARE IN INCHES AND INCLUDE CHEMICALLY APPLIED OR PLATED FINISHES		SCALE	1:1			
DECIMALS .X ± .05 .XX ± .01 .XXX ± .005	TOLERANCES	FRACTIONS ± 1/64 ANGLES ± 0° 30'	CODE	A		



REQ. PER UNIT	USED ON			A4240	Ø
	MODEL	ASS'Y. NO.	DATE		
	TSTE-10K		4-26-65		



X	4	GL125	ADHESIVE-EPOLY	
1	3	PM1241	PLATE, CAP. TOP	
1	2	PX942	INSULATOR, CAP. SUPPORT	
1	1	PM1242	PLATE, CAP. BOTTOM	

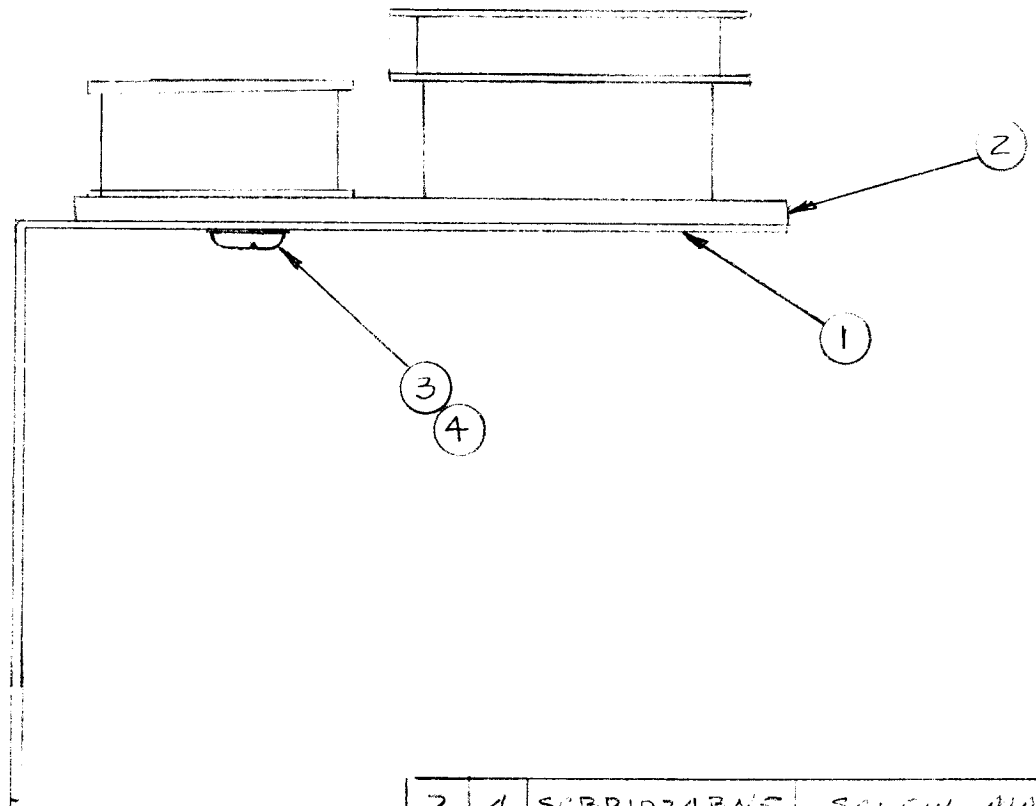
ISSUE	ITEM	CHANGED FROM	DATE	CH. NO.	DRAFTS	CHECKER	ENG. APP.
		Ø ORIGINAL RELEASE FOR PRODUCTION	5/10/65	1	21		<i>[Signature]</i>

TOLERANCES		SCALE: 1:1
DEC. DIM. ±	FRAC. DIM. ±	ANGULAR DIM. ±
MAXIMUM ALLOWABLE TOLERANCES HAVE BEEN DETERMINED AND ANY DEVIATIONS WILL BE CAUSE FOR REJECTION. REMOVE ALL BURRS AND SHARP EDGES		

REQ. ITEM	PART NO.	F. BUDETTI	DESCRIPTION	SYMBOL
STOCK SIZE		THE TECHNICAL MATERIEL CORP. MAMARONECK, NEW YORK		
MATERIAL		SUPPORT ASSY, CAPACITOR		
TYPE & TEMPER	HEAT TREAT. SPEC.	DRAWN	CHECKED	FINAL APPROVAL
FINISH & SPEC. NO.		SRG		<i>[Signature]</i>
				A4240
		ELEC. DES. APP.	MECH. DES. APP.	Ø

REQ. PER UNIT	USED ON		
	MODEL	ASS'Y. NO.	DATE
25	DDRR-506	A 29 70	4-21-65

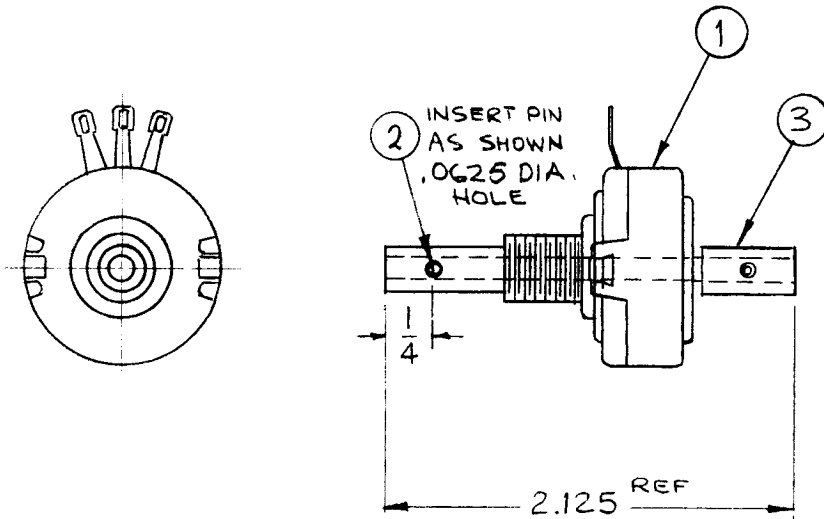
A 4242 A



2	4	SCRP1024BNS	SCREW, MACHINE
2	3	LWE10MRN	WASHER LOCK EXTERNAL
	2	SP137-2	SPRING, RETRACTING
	1	MS4514	BKT, 4

								REQ. ITEM	PART NO.	DESCRIPTION	SYMBOL	
A	ORIGINAL ENG	4/22/65	MS	MS	MS	MS				THE TECHNICAL MATERIEL CORP. MAMARONECK, NEW YORK		
Ø	ORIGINAL RELEASE FOR PRODUCTION	4/22/65	MS	MS	MS	MS				RETRACTOR ASSY		
SYM	DESCRIPTION	DATE	CH. NO.	DRAFTS	CHECKER	ENG. APP.						
UNLESS OTHERWISE SPECIFIED DIMENSIONS ARE IN INCHES AND INCLUDE CHEMICALLY APPLIED OR PLATED FINISHES		SCALE										
DECIMALS .X ± .05 .XX ± .01 .XXX ± .005	TOLERANCES	FRACTIONS ± 1/64 ANGLES ± 0° 30'	CODE A							M. STURMEL 4-21-65		
										DRAWN	CHECKED	
											FINAL APPROVAL	
											A 4242 A	
										FINISH & SPEC. NO.	ELEC. DES. APP. MECH. DES. APP.	

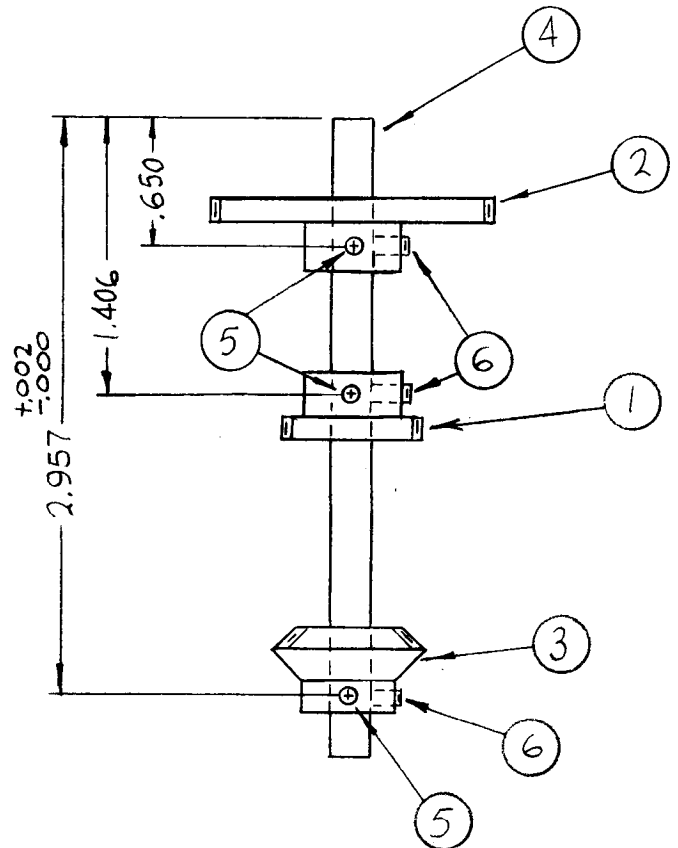
REQ. PER UNIT	USED ON			A 4255 $\emptyset$
	MODEL	ASS'Y. NO.	DATE	
1	RFTA-1		5.3.1965	



1	3	A4300	ADAPTER, POT, ASSY		
1	2	PN 99-062-4	PIN, SPRING		
1	1	RV120-1	RES. VAR. COMP. HOLLOW SHAFT		
REQ. ITEM	PART NO.		F. BUDETTI	DESCRIPTION	SYMBOL
#			THE TECHNICAL MATERIEL CORP.		
STOCK SIZE			MAMARONECK. NEW YORK		
#			LEDEX POT ASSEMBLY		
MATERIAL					
TYPE & TEMPER		HEAT TREAT. SPEC.	DRAWN	CHECKED	FINAL APPROVAL
#			aa		
FINISH & SPEC. NO.			ELEC. DES. APP.	MECH. DES. APP.	
			A 4255 $\emptyset$		

$\emptyset$	ORIGINAL RELEASE FOR PRODUCTION	5/16/67	$\emptyset$	CV		<i>Jide</i>
X <sub>1</sub>	DWG. REVISED	9-14-65	X <sub>1</sub>	<i>APL</i>		<i>MM</i>
SYM	DESCRIPTION	DATE	CH. NO.	DRAFTS	CHECKER	ENG. APP.
UNLESS OTHERWISE SPECIFIED DIMENSIONS ARE IN INCHES AND INCLUDE CHEMICALLY APPLIED OR PLATED FINISHES		SCALE	1:1			
DECIMALS	FRACTIONS	CODE				
.X $\pm$ .05	$\pm$ 1/64	A				
.XX $\pm$ .01	ANGLES					
.XXX $\pm$ .005	$\pm$ 0° 30'					
TOLERANCES						

TMC PART NO	ITEM 1	ASSY USED ON	REQ	REQ. PER UNIT	USED ON			A4281	Ø
					MODEL	ASS'Y. NO.	DATE		
A4281-1	GR205-34	A5141 (A5165)	1	1EA	TST-10K	A5165	9-3-65		
A4281-2	GR205-28	A5140 (A5165)	1						

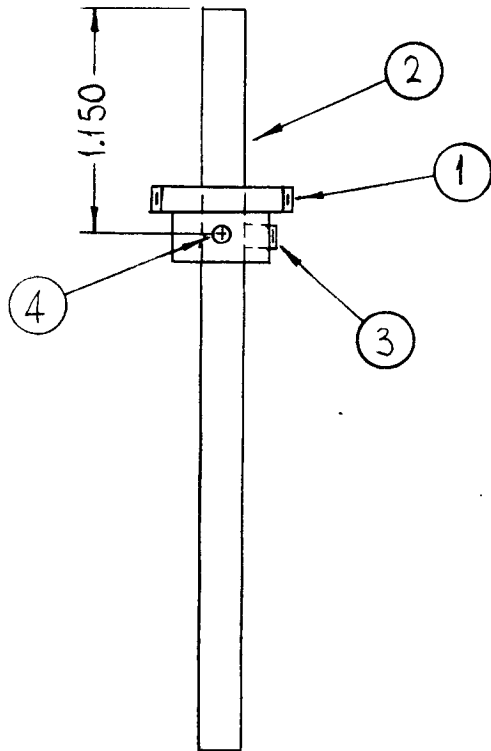


1	6	SLHC0632SP2	SETSCREW
1	5	PN59-062-8	PIN SPRING
1	4	PM1051-RF-3.250	SHAFT, PRECISION, 1/4 DIA.
1	3	GR223-1	GEAR, BEVEL MITER
1	2	GR205-19	GEAR, SPUR, HUB
1	1	SEE CHART	GEAR, SPUR, HUB

Ø ORIGINAL RELEASE FOR PRODUCTION	33-66	AA	Jc	Bo	me	
SYM	DESCRIPTION	DATE	CH. NO.	DRAFTS	CHECKER	ENG. APP.
UNLESS OTHERWISE SPECIFIED DIMENSIONS ARE IN INCHES AND INCLUDE CHEMICALLY APPLIED OR PLATED FINISHES		SCALE				
DECIMALS .X ± .05 .XX ± .01 .XXX ± .005	TOLERANCES	FRACTIONS ± 1/64 ANGLES ± 0° 30'	CODE A			

REQ. ITEM	PART NO.	F. BUDETTI	DESCRIPTION	SYMBOL
STOCK SIZE		THE TECHNICAL MATERIEL CORP. MAMARONECK, NEW YORK		
MATERIAL		BEVEL & SPUR GEAR ASS'Y		
TYPE & TEMPER	HEAT TREAT. SPEC.	DRAWN	CHECKED	FINAL APPROVAL
FINISH & SPEC. NO.		ELEC. DES. APP.	MECH. DES. APP.	A4281 Ø

REQ. PER UNIT	USED ON			A4282	Ø
	MODEL	ASS'Y. NO.	DATE		
2	TST-10K	A5165	9-2-65		



1	4	PN59-062-8	PIN, SPRING
1	3	SLHC0632SP2	SETSCREW
1	2	PM1051-RF-3,750	SHAFT, PRECISION, 1/4 DIA
1	1	GR205-18	GEAR, SPUR, HUB

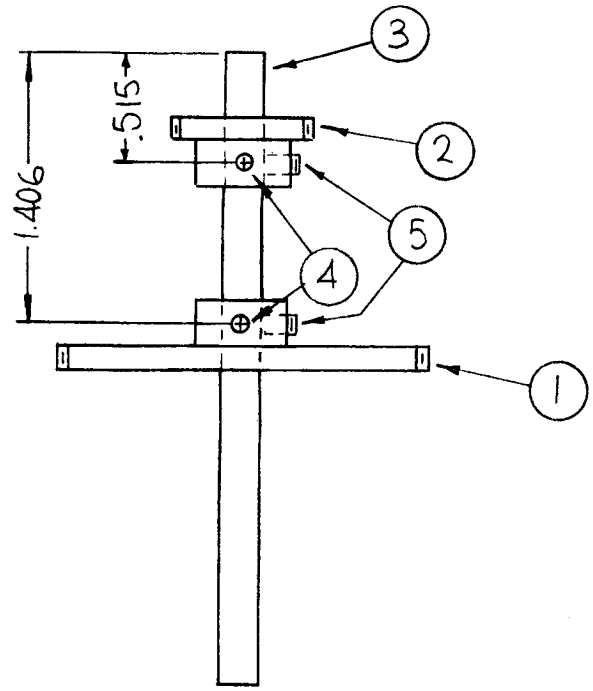
Ø ORIGINAL RELEASE FOR PRODUCTION	3-3-66	<i>m</i>	Jc	JCB	orc	
SYM	DESCRIPTION	DATE	CH. NO.	DRAFTS	CHECKER	ENG. APP.
UNLESS OTHERWISE SPECIFIED DIMENSIONS ARE IN INCHES AND INCLUDE CHEMICALLY APPLIED OR PLATED FINISHES		SCALE				
DECIMALS X ± .05 X ± .01 X ± .005	TOLERANCES	FRACTIONS ± 1/64 ANGLES ± 0° 30'	CODE A			

REQ. ITEM	PART NO.	F. BUDETTI DESCRIPTION	SYMBOL
STOCK SIZE		THE TECHNICAL MATERIEL CORP. MAMARONECK, NEW YORK	
MATERIAL		SPUR, GEAR, ASSY	
TYPE & TEMPER	HEAT TREAT. SPEC.	DRAWN	CHECKED
FINISH & SPEC. NO.		ELEC. DES. APP.	MECH. DES. APP.

A4282 Ø



TMC PART NO	ITEM 1	ASSEMBLY USED ON	REQ	REQ. PER UNIT	USED ON			A4283	Ø
					MODEL	ASS'Y. NO.	DATE		
A4283-1	GR205-31	A5141 (A5165)	1	1 EA	TST-10K	A5165	9-3-65		
A4283-2	GR205-30	A5140 (A5165)	1						

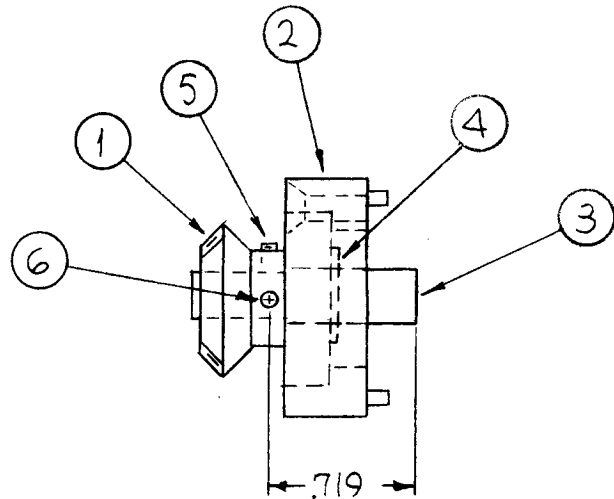


1	5	SLHC0632SP2	SETSCREW	
1	4	PN59-062-8	PIN, SPRING	
1	3	PM1254-1S-3.250	SHAFT, SHOULDER	
1	2	GR205-25	GEAR, SPUR, HUB	
1	1	SEE CHART	GEAR, SPUR, HUB	
REQ. ITEM	PART NO.		F. BUDETTI DESCRIPTION	SYMBOL

Ø ORIGINAL RELEASE FOR PRODUCTION	3-3-66	AA	Jc	OCB	orc	
SYM	DESCRIPTION	DATE	CH. NO.	DRAFTS	CHECKER	ENG. APP.
UNLESS OTHERWISE SPECIFIED DIMENSIONS ARE IN INCHES AND INCLUDE CHEMICALLY APPLIED OR PLATED FINISHES		SCALE				
DECIMALS .X ± .05 .XX ± .01 .XXX ± .005		FRACTIONS ± 1/64 ANGLES ± 0° 30'		CODE A		
TOLERANCES						

STOCK SIZE		THE TECHNICAL MATERIEL CORP. MAMARONECK, NEW YORK			
MATERIAL		SPUR, GEAR ASS'Y			
TYPE & TEMPER	HEAT TREAT. SPEC.	DRAWN	CHECKED	FINAL APPROVAL	
FINISH & SPEC. NO.		ELEC. DES. APP.	MECH. DES. APP.	A4283	Ø

REQ. PER UNIT	USED ON			A 4284	Ø
	MODEL	ASS'Y. NO.	DATE		
2	TST-10K	A5165	9-3-65		



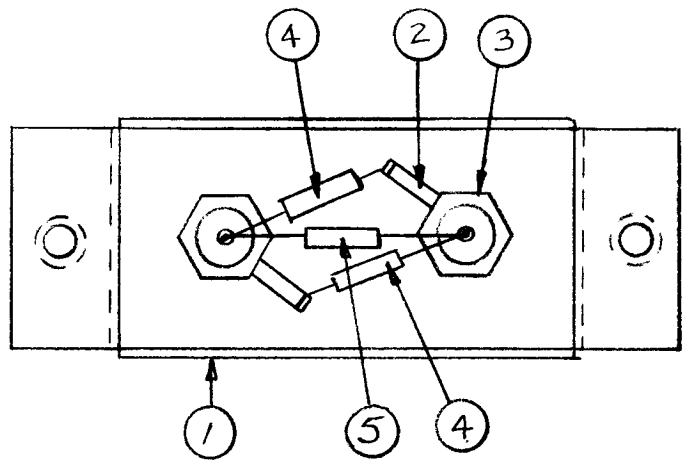
1	6	PN59-062-8	PIN, SPRING
1	5	SLH0632SP2	SETScrew
1	4	WA138-3	RING, RETAINING
1	3	PM1256	SHAFT, CAP. DRIVE
1	2	PM1237	PLATE, BEARING
1	1	GR223-1	GEAR, BEVEL, MITER

Ø	ORIGINAL RELEASE FOR PRODUCTION	3-3-66	<del>M</del>	Jc	JCB	arc
SYM	DESCRIPTION	DATE	CH. NO.	DRAFTS	CHECKER	ENG. APP.
UNLESS OTHERWISE SPECIFIED DIMENSIONS ARE IN INCHES AND INCLUDE CHEMICALLY APPLIED OR PLATED FINISHES		SCALE	---			
DECIMALS .X ± .05 .XX ± .01 .XXX ± .005	TOLERANCES	FRACTIONS ± 1/64 ANGLES ± 0° 30'	CODE A			

REQ. ITEM	PART NO.	F. BUDETTI	DESCRIPTION	SYMBOL
STOCK SIZE		THE TECHNICAL MATERIEL CORP. MAMARONECK, NEW YORK		
MATERIAL		GEAR ASSY, CAP. DRIVE		
TYPE & TEMPER	HEAT TREAT. SPEC.	DRAWN	CHECKED	FINAL APPROVAL
FINISH & SPEC. NO.		ELEC. DES. APP.	MECH. DES. APP.	A 4284   Ø

TMC DASH	REQ. PER UNIT	USED ON		
		MODEL	ASS'Y. NO.	DATE
-1	2	DDR-5L		5-25-65
-2	8	DDRR-506		6-21-65

A4288 A



TMC NO.	ITEM 1	ITEM 4	ITEM 5
A4288-1	LD1918-1/MS4609	RC20GF101K	RC20GF390K
A4288-2	LD1918-2/MS4609	RC20GF680K	RC20GF151K

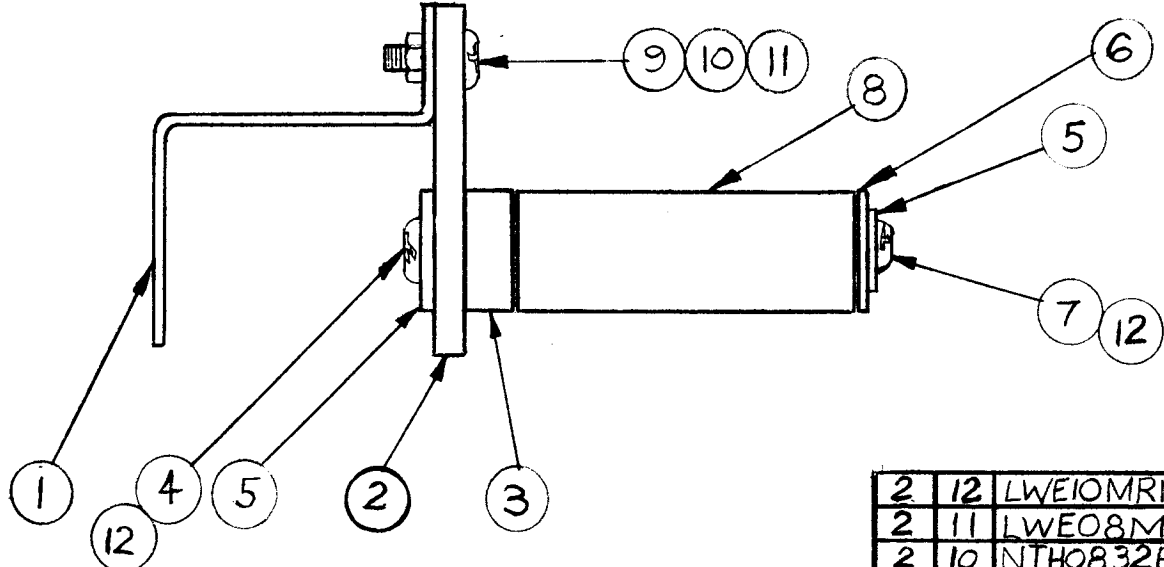
X	6	BS100	SOLDER, SOFT, TIN ALLOY
1	5	SEE CHART	RESISTOR, FIXED, COMPOSITION
2	4	SEE CHART	RESISTOR, FIXED, COMPOSITION
2	3	UG-625/U	RECEPTACLE, BNC
2	2	TE111-2	TERMINAL, LUG
1	1	SEE CHART	CHASSIS, ATTENUATOR

IT. 1-4-5 NOW READ SEE CHART. TMC PN CHART-ADDED	6-21-65	14301	D.V.V.	<i>[Signature]</i>
ORIGINAL RELEASE FOR PRODUCTION	6/3/65	<del>A</del>	MS	
UNLESS OTHERWISE SPECIFIED DIMENSIONS ARE IN INCHES AND INCLUDE CHEMICALLY APPLIED OR PLATED FINISHES	SCALE	<i>[Signature]</i>		
DECIMALS .X ± .05 .XX ± .01 .XXX ± .005	FRACTIONS ± 1/64 ANGLES ± 0° 30'	CODE A		

REQ. ITEM	PART NO.	STURMER	DESCRIPTION	SYMBOL
		THE TECHNICAL MATERIEL CORP. MAMARONECK, NEW YORK		
STOCK SIZE		ATTENUATOR ASSY		
MATERIAL		TT TYPE		
TYPE & TEMPER	HEAT TREAT. SPEC.	DRAWN	CHECKED	FINAL APPROVAL
		M. STURMER 5-25-65	<i>[Signature]</i>	<i>[Signature]</i>
FINISH & SPEC. NO.		ELEC. DES. APP.	MECH. DES. APP.	
		<i>[Signature]</i> 6-3-65		A4288 A

TMC PART NO.	ITEM 1	USED ON	REQ. PER UNIT	USED ON		
				MODEL	ASS'Y. NO.	DATE
A4289-1	MS2274	GPT40K AX2 12		GPT200K		6-10-65
A4289-2	MS4616	GPT200K AX398				

A4289  $\emptyset$



2	12	LWEIOMRN	WASH., LK, EXT	
2	11	LWE08MRN	WASH., LK, EXT	
2	10	NTH0832BN10	NUT, PLN, HEX	
2	9	SCBP0832BN8	SCR, MACH	
1	8	RA108-252-25	RESISTOR	R8304
1	7	SCBP1032BN18	SCR, MACH	
1	6	WA109-54	WASH., NM	
2	5	FW10HBN	WASH., FLAT	
1	4	SCBP1032BN8	SCR, MACH	
1	3	PX931	STANDOFF, RESISTOR MTG	
1	2	PX947	INSULATOR, POTENTIOMETER	
1	1	SEE CHART	BRACKET, INSULATOR MTG	

Ø	ORIGINAL RELEASE FOR PRODUCTION	6-15-65	JC			
SYM	DESCRIPTION	DATE	CH. NO.	DRAFTS	CHECKER	ENG. APP.
UNLESS OTHERWISE SPECIFIED DIMENSIONS ARE IN INCHES AND INCLUDE CHEMICALLY APPLIED OR PLATED FINISHES		SCALE FULL SCALE				
DECIMALS .X ± .05 .XX ± .01 .XXX ± .005	TOLERANCES	FRACTIONS ± 1/64 ANGLES ± 0° 30'	CODE			

REQ. ITEM	PART NO.	BUDETTI	DESCRIPTION	SYMBOL
STOCK SIZE		THE TECHNICAL MATERIEL CORP. MAMARONECK, NEW YORK		
MATERIAL		ASSEMBLY, TRIGGER ADJ.		
TYPE & TEMPER	HEAT TREAT. SPEC.	DRAWN	CHECKED	FINAL APPROVAL
FINISH & SPEC. NO.		ELEC. DES. APP.	MECH. DES. APP.	A4289 $\emptyset$

REQ. PER UNIT	USED ON			A 4292
	MODEL	ASS'Y. NO.	DATE	
1	BRCD-1			

No DRAWING AVAIL

								REQ. ITEM	PART NO.	DESCRIPTION	SYMBOL	
										THE TECHNICAL MATERIEL CORP. MAMARONECK. NEW YORK		
									STOCK SIZE	CHAS ASSY, OUTPUT		
									MATERIAL			
SYM	DESCRIPTION	DATE	CH. NO.	DRAFTS	CHECKER	ENG. APP.						
UNLESS OTHERWISE SPECIFIED DIMENSIONS ARE IN INCHES AND INCLUDE CHEMICALLY APPLIED OR PLATED FINISHES							SCALE					
DECIMALS .X ± .05 .XX ± .01 .XXX ± .005	TOLERANCES	FRACTIONS ± 1/64 ANGLES ± 0° 30'	CODE					TYPE & TEMPER	HEAT TREAT. SPEC.	DRAWN	CHECKED	FINAL APPROVAL
												A 4292
								FINISH & SPEC. NO.		ELEC. DES. APP.	MECH. DES. APP.	