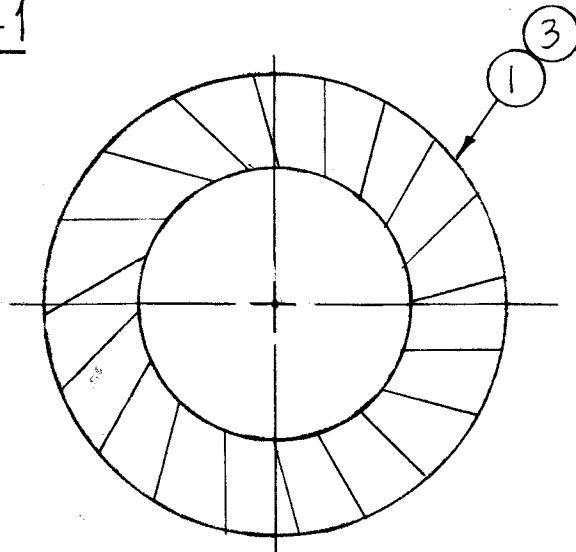
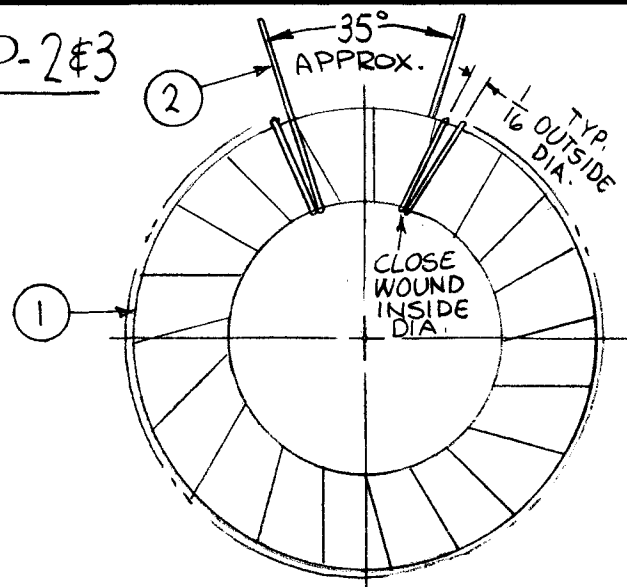


STEP-1



1-COVER ITEM 1 WITH ITEM 3 BY OVERLAPPING PRECEEDING TURNS

STEP-2&3



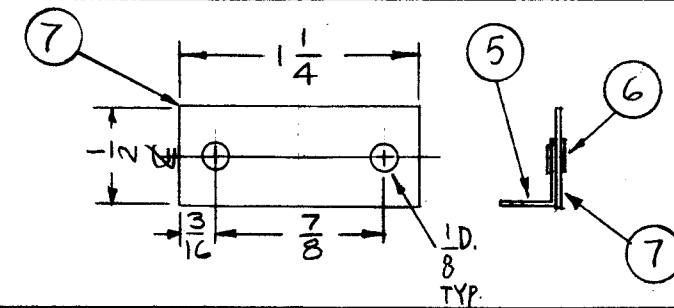
2-WIND 100 TURNS OF ITEM 2 ON ITEM 1,
3-COVER ITEM 2 WITH ITEM 3.

A4105

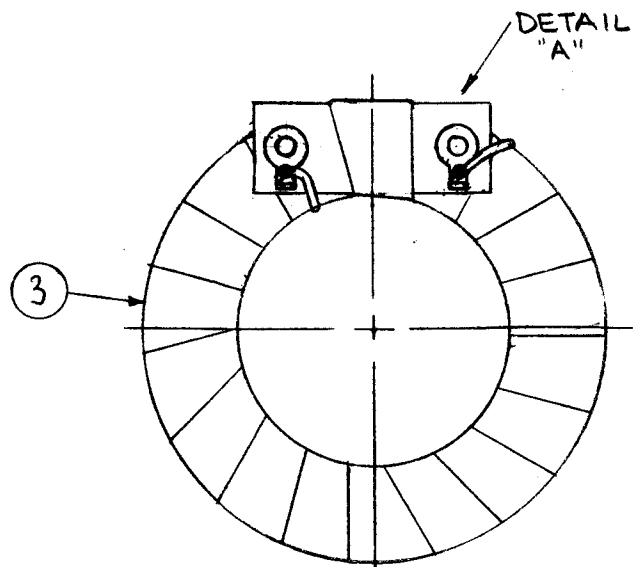
REVISIONS

SYM	DESCRIPTION	DATE	E.M.N. NO.	DRAFT	CHKD	APPD
Ø	ORIGINAL RELEASE FOR PRODUCTION	4-7-66		Jc		
A	STEP-6, "Q- GREATER THAN 5" DELETED; "TEST FREQ 79KC" ADDED	6-23-66	16395	N.C.	JCB	D.O.
B	MARCONI 1/4% BRIDGE ADDED TO STEP "6". ON SCHEMATIC 1 & 2 DELE. YEL. DOT ADD	9.13.66	16842	WU	JCB	D.O.
C	ITEM 7 WAS IM171-7	3.18.68	18820	W.S.	JCB	FB

DETAIL-A

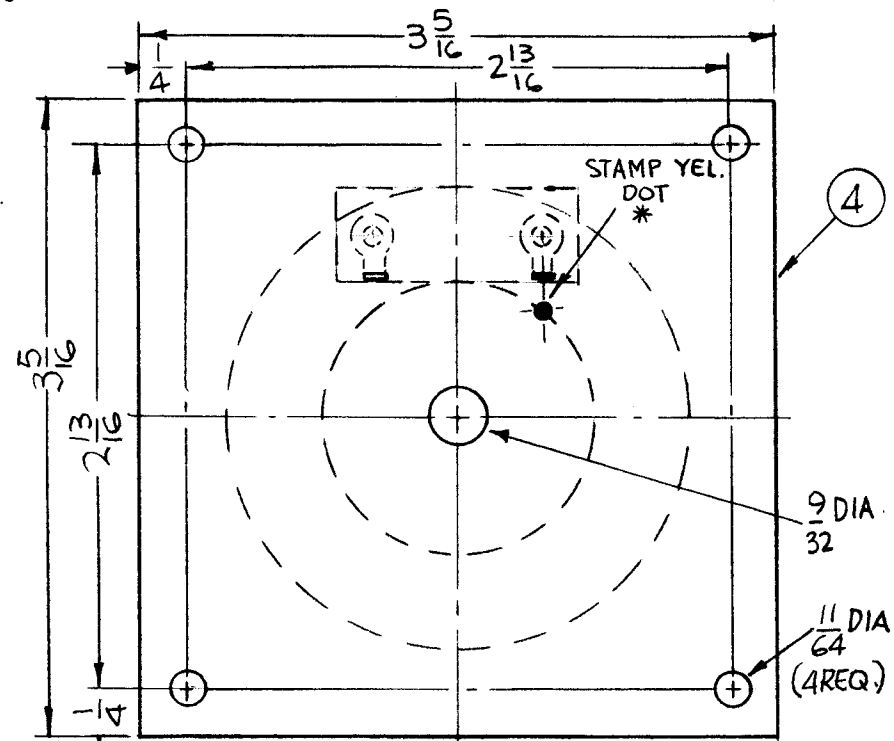


STEPS-4&5



4-SECURE CENTER OF DETAIL "A" WITH ITEM 3.
5-ATACH ITEM 2 TO DETAIL "A" AS SHOWN.

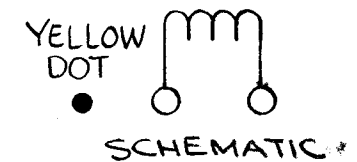
STEPS-7&8



7-CENTER ITEM 1 AS SHOWN & POT WITH ITEM 4
3-5/16 X 3-5/16 X 1" THICK.
8- DRILL AS SHOWN & PLACE YEL DOT.

STEP-6

TEST WITH BOONTON METER MODEL 260 OR
MARCONI 1/4 % BRIDGE
L-GREATER THAN 25.0 mh,
TEST FREQ
MODEL 260: 79 KC
1/4 BRIDGE: 10 KC



REQ'D.	ITEM	PART NUMBER	DESCRIPTION	SYMBOL
X	8	BS100	SOLDER TIN ALLOY	
	1	IM179-21	INS SH, ELEC.	
	2	EY100-1	EYELET, MTL.	
	2	TE149-120	TERM. LUG NO.4	
X	4	GL106	POTTING COMPOUND (RED)	
X	3	TA101-1	INS. TAPE, ELECT.	
X	2	WI123-22	WIRE, ELECT, MAG. H.T.	
	1	CI135-1	CORE, TOROID	

F. BUDETTI		LIST OF MATERIAL			
MATERIAL		THE TECHNICAL MATERIEL CORP. MAMARONECK, NEW YORK			
FINISH		TITLE LOOP ASSY			
UNLESS OTHERWISE SPECIFIED DIMENSIONS ARE IN INCHES AND INCLUDE CHEMICALLY APPLIED OR PLATED FINISHES		DRAWN	DATE	FINAL APPROVAL	DATE
DECIMALS .X ± .05 .XX ± .01 .XXX ± .005		4-4-66	4-7-66		4/7/66
FRACTIONS ± 1/64 ANGLES ± 0° 30'		CHECKED	DATE	A4105	
TOLERANCES		ELECT. DES.	DATE	C	
		MECH. DES.	DATE	SHEET	
				REV. LTR.	

* BEGINING OF WINDING.

NOTES

2	GPT-10KLF	AX 569
Q'TY./UNIT	MODEL USED ON	ASS'Y. NO.
SCALE 1:1	CODE A	
THE CONTENTS OF THIS DRAWING ARE THE EXCLUSIVE PROPERTY OF THE TECHNICAL MATERIEL CORP. ITS UNAUTHORIZED USE OR REPRODUCTION IN WHOLE OR IN PART IS STRICTLY FORBIDDEN.		

M/L AKLEIN 4/7/66