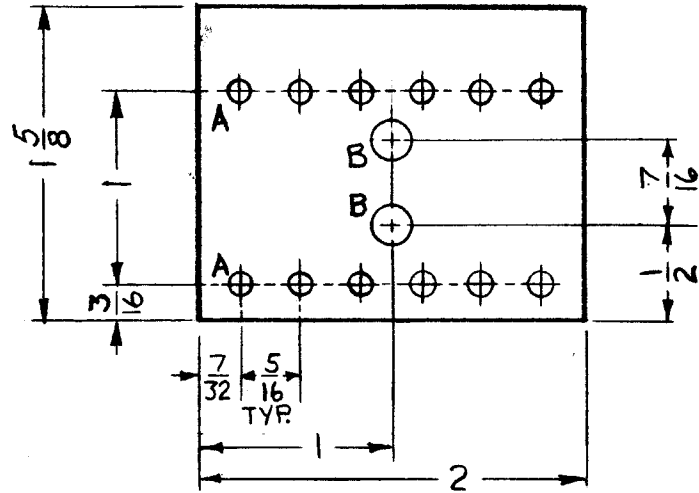


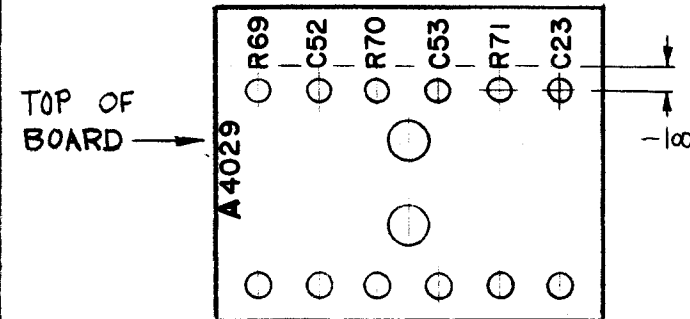
MATERIAL - XXX PHENOLIC 1/8 THICK

| HOLE | DESCRIPTION | REQ |
|------|-------------|-----|
| A    | .113 DIA    | 12  |
| B    | .189 DIA    | 2   |



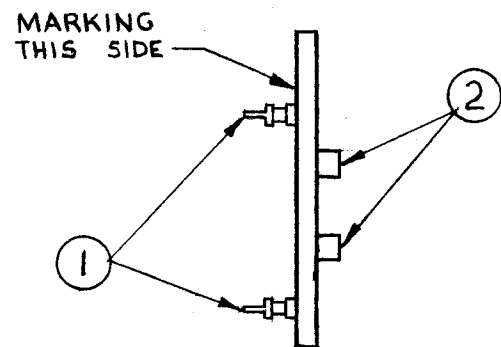
MACHINING (A4029-1)

MARKING PROCESS: AS PER TMC SPEC. S-727.  
 LETTERING: 3/32 HIGH BLACK GOTHIC,  
 LOCATED AS SHOWN.  
 MARK TMC PART NO. W/LATEST REV. LETTER.

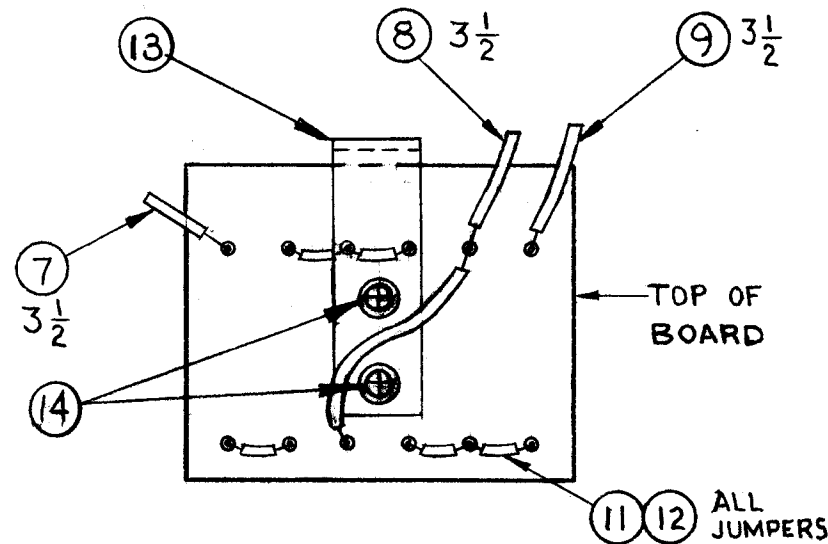


MARKING (A4029-2)

MOUNT ITEM 1 IN "A" HOLES  
 MOUNT ITEM 2 IN "B" HOLES



SUB ASSY. (A4029-3)



ELECTRICAL ASSY. (A4029-4)

B  
A4029

REVISIONS

| SYM | DESCRIPTION                     | DATE     | E.M.N. NO. | DRAFT | CHKD | APPD |
|-----|---------------------------------|----------|------------|-------|------|------|
| Ø   | ORIGINAL RELEASE FOR PRODUCTION | 12-1-64  | Ø          |       |      |      |
| Δ   | ADD. IT. 13, 14                 | 12-18-64 | 13110      | HCA   |      |      |
| B   | IT. 3 P/N WAS RC20GF102J        | 1-22-65  | 13334      | RT    |      |      |

| REQ'D. | ITEM | PART NUMBER   | DESCRIPTION                | SYMBOL   |
|--------|------|---------------|----------------------------|----------|
| 2      | 14   | SC131-0632BN4 | SCREW, MACH., UNDERCUT     |          |
| 1      | 13   | MS4147        | BRACKET, MTG., TERM BD     |          |
| 8      | 12   | WL100-7       | WIRE, BUSS, BAR, TINNED    |          |
| 4      | 11   | PX104-1-.034  | INSULATION, SLEEVING       | BLACK    |
| X      | 10   | BS100         | SOLDER, TIN ALLOY          |          |
| 4      | 9    | MWC22 (7) U2  | WIRE, ELECTRICAL INSULATED | RED      |
| 4      | 8    | MWC22 (7) U0  | WIRE, ELECTRICAL INSULATED | BLACK    |
| 4      | 7    | MWC22 (7) U5  | WIRE, ELECTRICAL INSULATED | GREEN    |
| 1      | 6    | CN114R102J    | CAPACITOR, METALIZED MYLAR | C23      |
| 2      | 5    | RC20GF471J    | RESISTOR, FIXED, COMP.     | R70, R71 |
| 2      | 4    | CN114-R202J   | CAPACITOR METALIZED MYLAR  | C52, 53  |
| 1      | 3    | RC20GF221J    | RESISTOR, FIXED, COMP.     | R69      |
| 2      | 2    | TE108-8       | NUT, PLAIN CLINCH          |          |
| 12     | 1    | TE109-3       | TERMINAL, STUD             |          |

D. POSE

LIST OF MATERIAL

|   |  |      |                |      |
|---|--|------|----------------|------|
| MATERIAL  | THE TECHNICAL MATERIEL CORP.<br>MAMARONECK, NEW YORK |      |                |      |
| FINISH  | TITLE<br>TERMINAL BOARD ASSY.                        |      |                |      |
| UNLESS OTHERWISE SPECIFIED<br>DIMENSIONS ARE IN INCHES AND INCLUDE<br>CHEMICALLY APPLIED OR PLATED FINISHES | DRAWN  | DATE | FINAL APPROVAL | DATE |
|   | CHECKED  | DATE |                |      |
| DECIMALS  | TOLERANCES   |      | FRACTIONS      |      |
| .X ± .05<br>.XX ± .01<br>.XXX ± .005  | ± 1/64<br>ANGLES<br>± 0° 30'                         |      |                |      |
|   | ELECT. DES.  | DATE | A4029          | B    |
|   | MECH. DES.   | DATE |                |      |

NOTES

THE CONTENTS OF THIS DRAWING ARE THE EXCLUSIVE PROPERTY  
 OF THE TECHNICAL MATERIEL CORP. ITS UNAUTHORIZED USE OR  
 REPRODUCTION IN WHOLE OR IN PART IS STRICTLY FORBIDDEN.

|              |               |            |
|--------------|---------------|------------|
| 1            | KIT 217       |            |
| Q'TY./UNIT   | MODEL USED ON | ASS'Y. NO. |
| SCALE<br>1:1 | CODE<br>A     |            |