

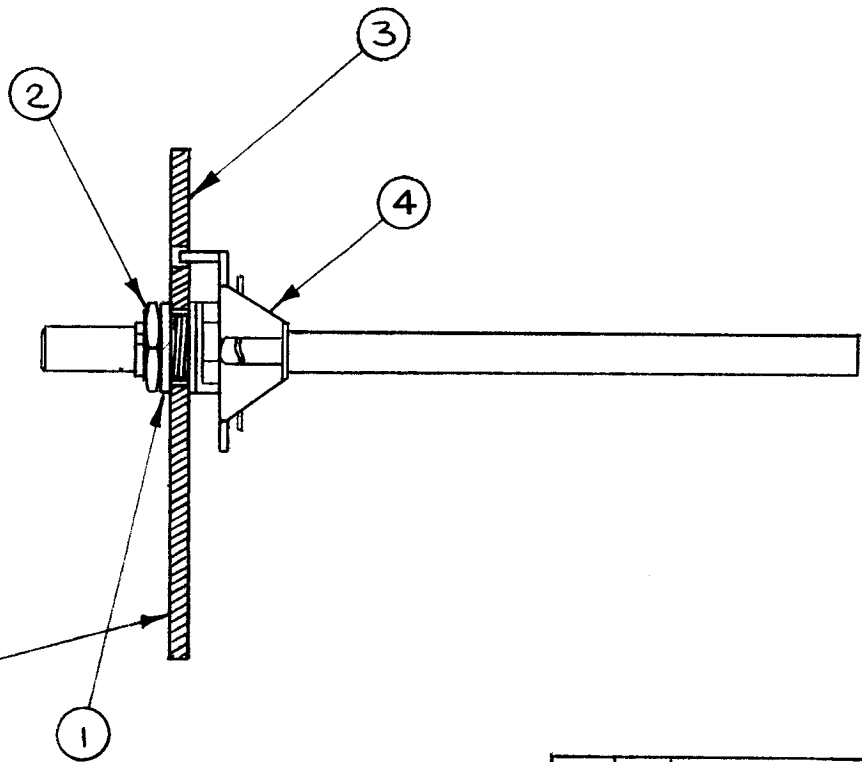
SYMBOL(S)	ITEM NO.	USED TO MOUNT	QTY
W9001	1		
W9002	2		
W9003	3		
W9004	4		
W9007	5		

REQ. PER UNIT	USED ON			A4031	Ø
	MODEL	ASS'Y. NO.	DATE		
1	RAK-102-3	A3885	4/19/65		

30	6	CU142-1-0	S TRAP, CBL, ADJ
1	5	CA928	CBL ASSY, PWR, AC
1	4	CA913	WRG HARN, BRCHD
1	3	CA872	WRG HARN, BRCHD
1	2	CA871	WRG HARN, BRCHD
1	1	CA870	WRG HARN, BRCHD

REQ.	ITEM	PART NO.	DESCRIPTION		SYMBOL
			EATON		
			THE TECHNICAL MATERIEL CORP. MAMARONECK. NEW YORK		
STOCK SIZE			WIRING HARNESS ASSEMBLY		
MATERIAL					
UNLESS OTHERWISE SPECIFIED DIMENSIONS ARE IN INCHES AND INCLUDE CHEMICALLY APPLIED OR PLATED FINISHES			SCALE		
DECIMALS .X ± .05 .XX ± .01 .XXX ± .005			FRACTIONS ± 1/64 ANGLES ± 0° 30'		
TOLERANCES			CODE		
ORIGINAL RELEASE FOR REVISION			7-29-65		
SYM			DATE		CH. NO.
DESCRIPTION			DRAFTS		CHECKER
UNLESS OTHERWISE SPECIFIED DIMENSIONS ARE IN INCHES AND INCLUDE CHEMICALLY APPLIED OR PLATED FINISHES			DATE		ENG. APP.
TYPE & TEMPER			HEAT TREAT. SPEC.		DRAWN
FINISH & SPEC. NO.			ELEC. DES. APP.		MECH. DES. APP.
			4-27-65 ENG COORD		L. Gabriel 4-27-65
			DRAWN		CHECKED
			A4031		Ø

REQ. PER UNIT	USED ON			A4045	A
	MODEL	ASS'Y. NO.	DATE		
1	TTR-10	AX418	10.28.64		



ITEMS 1 & 2 SUPPLIED WITH ITEM 4

1	4	DT108	DETENT, SWITCH -30 DEG.	
1	3	LD1644/MS4113	PLATE, DETENT	
1	2	NTH3732BN16	NUT, PLAIN, HEX	
1	1	LWI37LRN	WASHER, LOCK, INTERNAL	
REQ. ITEM	PART NO.	O POSE DESCRIPTION		SYMBOL

A	3-1/2, 1/2 DIM. DELE	6/11/65	14165	2	JOB	
Ø	ORIGINAL RELEASE FOR PRODUCTION	12.28.64	Ø	2.2		
X	EXPER. RELEASE	12.10.64	X	hjb		
SYM	DESCRIPTION	DATE	CH. NO.	DRAFTS	CHECKER	ENG. APP.
UNLESS OTHERWISE SPECIFIED DIMENSIONS ARE IN INCHES AND INCLUDE CHEMICALLY APPLIED OR PLATED FINISHES		SCALE NONE				
DECIMALS .X ± .05 .XX ± .01 .XXX ± .005	TOLERANCES	FRACTIONS ± 1/64 ANGLES ± 0° 30'	CODE A			

STOCK SIZE		THE TECHNICAL MATERIEL CORP. MAMARONECK. NEW YORK			
MATERIAL		DETENT ASSY, REAR			
TYPE & TEMPER	HEAT TREAT. SPEC.	DRAWN	CHECKED	FINAL APPROVAL	
FINISH & SPEC. NO.		hjb @ 12-23-64		RJC	
		0.6, 12-28-64	A4045		A

ASSY NUMBER	USED ON	ITEM #
A4074	AX541-1	DD111-1
	AX541-2	
A4074-1	AX541-3	1N538

FOR SYMBOLS
SEE APPROPRIATE
BILL OF MAT'L

REQ. PER UNIT	USED ON		
	MODEL	ASS'Y. NO.	DATE
1	SMEC-1	AX541-3	
1	SMEB-1	AX541-1	
2	HFAR-1	AX541-1	
		AX541-2	

A4074

Ø

- 1 6 TE159-32960 TERM, LUG-INS
- 1 5 SW357 SW-SOL ROT.
- 1 4 MS3790 PL, MTG, SW
- * 1 3 SEE CHART ABSORBER, OVV
- 1 2 CU152-3 CLAMP, LOOP
- 1 1 CA990 CBL ASSY, SP

REQ.	ITEM	PART NO.	DESCRIPTION	SYMBOL			
			THE TECHNICAL MATERIEL CORP. MAMARONECK, NEW YORK				
			STOCK SIZE				
			SW-SOL ASSY				
Ø			ORIGINAL RELEASE FOR PRODUCTION				
		11-18-66	Ø RME				
SYM	DESCRIPTION		DATE	CH. NO.	DRAFTS	CHECKER	ENG. APP.
UNLESS OTHERWISE SPECIFIED DIMENSIONS ARE IN INCHES AND INCLUDE CHEMICALLY APPLIED OR PLATED FINISHES			SCALE				
DECIMALS .X ± .05 .XX ± .01 .XXX ± .005		TOLERANCES		FRACTIONS ± 1/64 ANGLES ± 0° 30'		CODE	
						TYPE & TEMPER HEAT TREAT. SPEC.	
						FINISH & SPEC. NO.	
						ELEC. DES. APP. MECH. DES. APP.	
						A4074	
						Ø	

SYMBOL(S)	ITEM NO.	USED TO MOUNT	QTY
MP3001	3		
	4	A4082	2
	5	A4082	5
	6	A4080	4
	9	A4082	5
	10	A4080	4
	11	A4082	5
	12	A4082	2

REQ. PER UNIT	USED ON			A4079	Ø
	MODEL	ASS'Y. NO.	DATE		
1	RAK-106	A4081	4/19/65		

2	12	SCBP1032BN6	SCR, MACH
5	11	SCBP0632BN5	SCR, MACH
4	10	SCBP0632BN4	SCR, MACH
5	9	NTH0632BN8	NUT, PLN. HEX
	8	DELETED	
1	7	MS4025	PNL, REAR
4	6	LWS06MRN	WASH. ,LK,SPLIT
5	5	LWE06MRN	WASH. ,LK,EXT
2	4	FW100-19BN	WASH. ,FLAT
1	3	AD103-2	FIL,AIR COND
1	2	A4082	FAN/CHAS ASSY
1	1	A4080	CAP./CONN ASSY

Ø ORIGINAL RELEASE FOR PRODUCTION	4-29-65	CJL				
SYM	DESCRIPTION	DATE	CH. NO.	DRAFTS	CHECKER	ENG. APP.
UNLESS OTHERWISE SPECIFIED DIMENSIONS ARE IN INCHES AND INCLUDE CHEMICALLY APPLIED OR PLATED FINISHES		SCALE				
DECIMALS .X ± .05 .XX ± .01 .XXX ± .005	TOLERANCES	FRACTIONS ± 1/64 ANGLES ± 0° 30'	CODE			

REQ. ITEM	PART NO.	DESCRIPTION	SYMBOL
		BUPETTI	
STOCK SIZE		THE TECHNICAL MATERIEL CORP. MAMARONECK. NEW YORK	
MATERIAL		FAN/PANEL ASSEMBLY-REAR	
TYPE & TEMPER	HEAT TREAT. SPEC.	DRAWN	CHECKED
FINISH & SPEC. NO.		REC. DES. APP.	MECH. DES. APP.
		4-27-65 ENG COORD <i>L. Sabal</i>	4-27-65 <i>A. M. King</i> 5/4/65
		<i>[Signature]</i>	<i>[Signature]</i>
			A4079
			Ø

SYMBOL(S)	ITEM NO.	USED TO MOUNT	QTY
W3001	2		
C3018	3		
	5	MS3102	4
J3006	6		
	7	CP41 to MS3102 WRG	6
	8	MS3102	4
	9	MS3102	4

REQ. PER UNIT	USED ON			A4080	Ø
	MODEL	ASS'Y. NO.	DATE		
1	RAK-106	A4079	4/19/65		

4	9	SCBP0440BN6	SCR, MACH
4	8	NTH0440BN8	NUT, PLN, HEX
6	7	MWC22/7/U1	WIRE, ELEC, INS
1	6	MS3102A14S2S	CONN, RECP, FML
4	5	LWE04MRN	WASH., LK, EXT
1	4	LD530/MS1611	BRKT, MTG, CAP.
1	3	CP41B1FF405K	CAP., FXD, P
1	2	CA575-5	CBL ASSY, PWR, AC -3/C, CLD
	1	BS100	SOLDER, TIN ALY

Ø	UNLESS OTHERWISE SPECIFIED DIMENSIONS ARE IN INCHES AND INCLUDE CHEMICALLY APPLIED OR PLATED FINISHES	4-29-65	CSL				
SYM	DESCRIPTION	DATE	CH. NO.	DRAFTS	CHECKER	ENG. APP.	
UNLESS OTHERWISE SPECIFIED DIMENSIONS ARE IN INCHES AND INCLUDE CHEMICALLY APPLIED OR PLATED FINISHES		SCALE					
DECIMALS .X ± .05 .XX ± .01 .XXX ± .005	TOLERANCES	FRACTIONS ± 1/64 ANGLES ± 0° 30'	CODE				

REQ.	ITEM	PART NO.	BUDETTI	DESCRIPTION	SYMBOL
STOCK SIZE			THE TECHNICAL MATERIEL CORP. MAMARONECK. NEW YORK		
MATERIAL			CAPACITOR/CONNECTOR ASSEMBLY		
TYPE & TEMPER		HEAT TREAT. SPEC.	DRAWN	CHECKED	FINAL APPROVAL
FINISH & SPEC. NO.		ELEC. DES. APP.	MECH. DES. APP.	A4080	Ø

4-27-65
ENG COORD

2.9.65
4-27-65

5/4/65

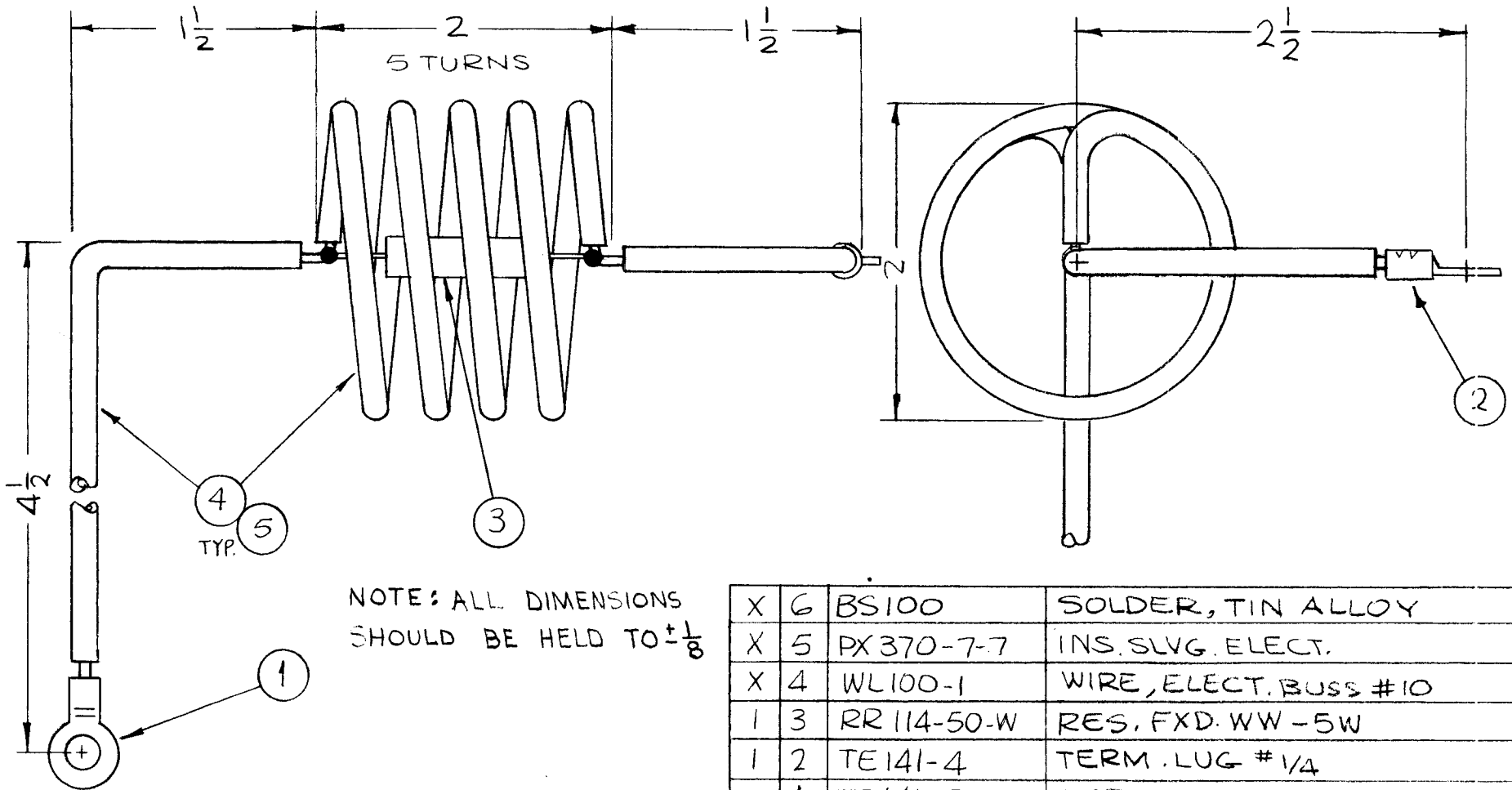
SYMBOL(S)	ITEM NO.	USED TO MOUNT	QTY
A3001	2		
	3	A4038 to A2090	8
	4	A4038 to A2090	8
	5	A4038 to A2090	8

REQ. PER UNIT	USED ON			A4082	Ø
	MODEL	ASS'Y. NO.	DATE		
1	RAK-106	A4079	4/19/65		

8	5	SCBP0440BN5	SCR, MACH
8	4	NTH0440BN8	NUT, PLN, HEX
8	3	LWE04MRN	WASH. , LK, EXT
1	2	A4038	FAN/CONN ASSY
1	1	A2090	CHAS ASSY, FAN

SYM	DESCRIPTION	DATE	CH. NO.	DRAFTS	CHECKER	ENG. APP.	REQ. ITEM	PART NO.	DESCRIPTION	SYMBOL
Ø	ORIGINAL RELEASE FOR	4-29-65							BUDETTI	
UNLESS OTHERWISE SPECIFIED DIMENSIONS ARE IN INCHES AND INCLUDE CHEMICALLY APPLIED OR PLATED FINISHES							THE TECHNICAL MATERIEL CORP. MAMARONECK. NEW YORK			
DECIMALS .X ± .05 .XX ± .01 .XXX ± .005							FAN/CHASSIS ASSEMBLY			
FRACTIONS ± 1/64 ANGLES ± 0° 30'							MATERIAL			
TOLERANCES							4-27-65 L. Gebel 4-27-65			
SCALE							TYPE & TEMPER HEAT TREAT. SPEC. DRAWN CHECKED			
CODE							FINAL APPROVAL			
FINISH & SPEC. NO.							A4082 Ø			
							ELEC. DES. APP. MECH. DES. APP.			

REQ. PER UNIT	USED ON			A4093	A
	MODEL	ASS'Y. NO.	DATE		
2	GPT-10KLF	AX531	3-22-66		



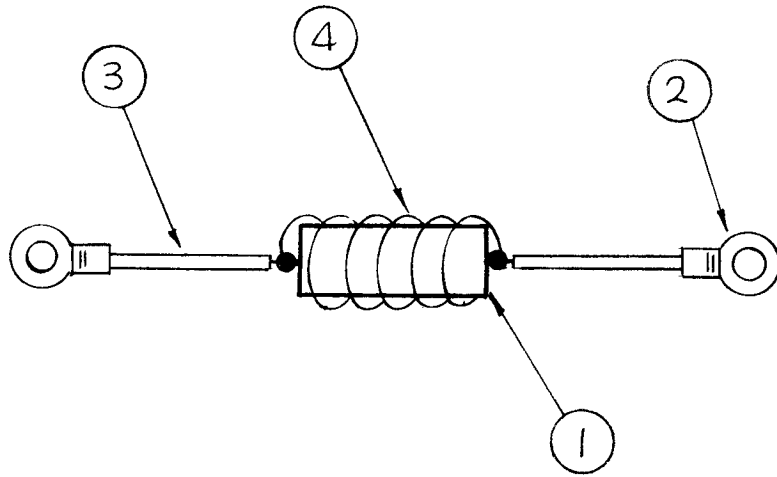
NOTE: ALL DIMENSIONS SHOULD BE HELD TO $\pm \frac{1}{8}$

X	6	BS100	SOLDER, TIN ALLOY
X	5	PX370-7-7	INS. SLVG. ELECT.
X	4	WL100-1	WIRE, ELECT. BUSS #10
1	3	RR114-50-W	RES. FXD. WW-5W
1	2	TE141-4	TERM. LUG #1/4
1	1	TE141-3	TERM. LUG #10

A	ADDED DIM. NOTE.	7-26-66	16645	RME	JCB	JCB
Ø	ORIGINAL RELEASE FOR PRODUCTION	3-24-66	Ø	HLA		HLA
SYM	DESCRIPTION	DATE	CH. NO.	DRAFTS	CHECKER	ENG. APP.
UNLESS OTHERWISE SPECIFIED DIMENSIONS ARE IN INCHES AND INCLUDE CHEMICALLY APPLIED OR PLATED FINISHES		SCALE 1:1				
DECIMALS .X ± .05 .XX ± .01 .XXX ± .005	TOLERANCES	FRACTIONS ± 1/64 ANGLES ± 0° 30'	CODE A			

REQ. ITEM	PART NO.	F. BUDETTI DESCRIPTION	SYMBOL
STOCK SIZE		THE TECHNICAL MATERIEL CORP. MAMARONECK, NEW YORK	
MATERIAL		PARASITIC SUPPRESSOR ASSY (PLATE)	
TYPE & TEMPER	HEAT TREAT. SPEC.	DRAWN	CHECKED
FINISH & SPEC. NO.		ELEC. DES. APP.	MECH. DES. APP.
		WLA	JCB
		WLA	HLA
		A4093 A	

REQ. PER UNIT	USED ON			A4094	Ø
	MODEL	ASS'Y. NO.	DATE		
2	GPT-10KLF	AX531	3-22-66		



PROCEDURE:

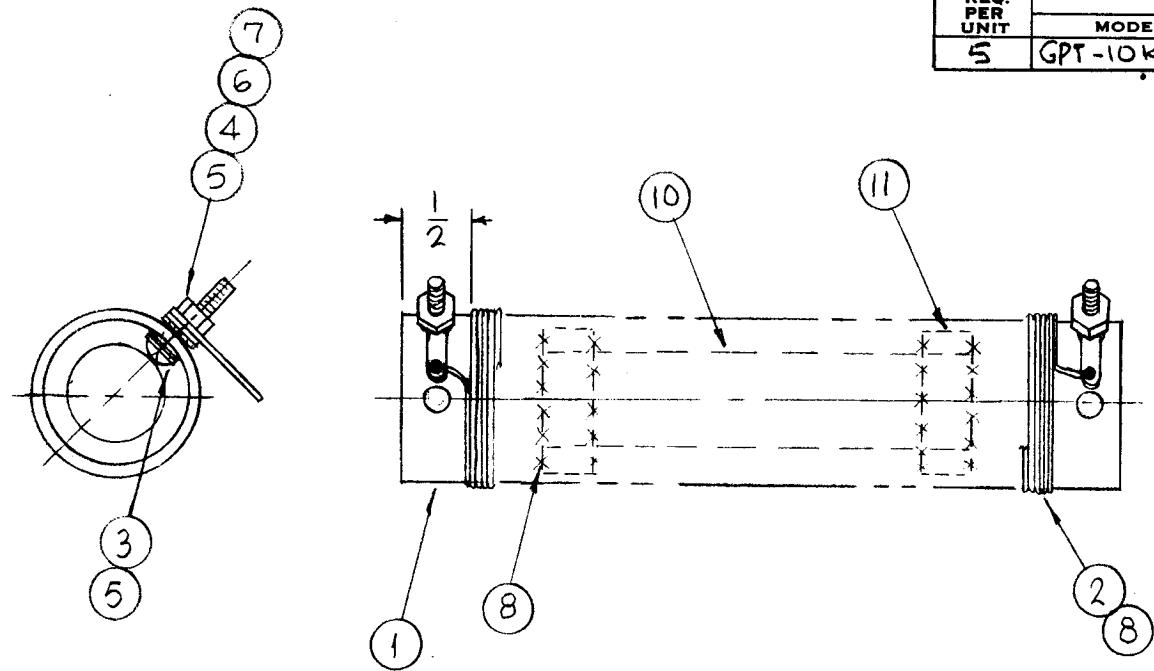
- 1- WRAP 5 TURNS OF ITEM 4 EVENLY SPACED AROUND ITEM 1.
- 2- SECURE WITH ITEM 5.
- 3- PLACE ITEM 3 ON BOTH ENDS.
- 4- CRIMP & SOLDER ITEM 2 ON BOTH ENDS.

X	5	BS100	SOLDER, TIN ALLOY
X	4	WL100-5	WIRE, ELECT, BUSS
X	3	PX370-16-7	INS. SLVG. ELECT
2	2	TE159-34160	TERM. LUG INS.
1	1	RC42GF470J	RES. FIXED COMP.

							REQ. ITEM	PART NO.	F. BUDETTI	DESCRIPTION	SYMBOL	
							STOCK SIZE		THE TECHNICAL MATERIEL CORP. MAMARONECK. NEW YORK			
							MATERIAL		PARASITIC, SUPPRESSOR ASSY (GRID)			
							TYPE & TEMPER	HEAT TREAT. SPEC.	DRAWN	CHECKED	FINAL APPROVAL	
							FINISH & SPEC. NO.		ELEC. DES. APP.	MECH. DES. APP.	A4094	Ø
UNLESS OTHERWISE SPECIFIED DIMENSIONS ARE IN INCHES AND INCLUDE CHEMICALLY APPLIED OR PLATED FINISHES		SCALE										
DECIMALS .X ± .05 .XX ± .01 .XXX ± .005		FRACTIONS ± 1/64 ANGLES ± 0° 30'		CODE A								
TOLERANCES		DATE 3-24-66		CH. NO.	DRAFTS HCA	CHECKER HCA	E.G. APP. HCA					
Ø ORIGINAL RELEASE FOR PRODUCTION												

REQ. PER UNIT	USED ON		
	MODEL	ASS'Y. NO.	DATE
5	GPT-10KLF	AX531	12-22-65

A4099-1 A



PROCEDURE:
 1~ ASSEMBLE ITEMS 3,4,5,6,7 TO ITEM 1
 2~ WIND 168 TURNS OF ITEM 2 & SECURE TO ITEM 6 WITH ITEM 9.
 3~ TEST AS PER CHART 1
 4~ BAKE FOR 15 MIN. AT 214°F, THEN INSERT ITEM 10 WRAPPED WITH ITEM 11. CENTERED IN ITEM 1.
 5~ PAINT INSIDE & OUTSIDE WITH ITEM 8 AND BAKE FOR 15 MIN. AT 214°F,
 6~ COOL & TEST AS PER CHART 2.

ELECTRICAL SPECS:

CHART I WITHOUT CORE	CHART II WITH CORE
L ~ 182 μ h \pm 10%	L ~ 900 μ h \pm 10%
Q ~ GREATER THAN 100	Q ~ GREATER THAN 35
TEST FREQ. 790 KC	TEST FREQ. ~ 790 KC

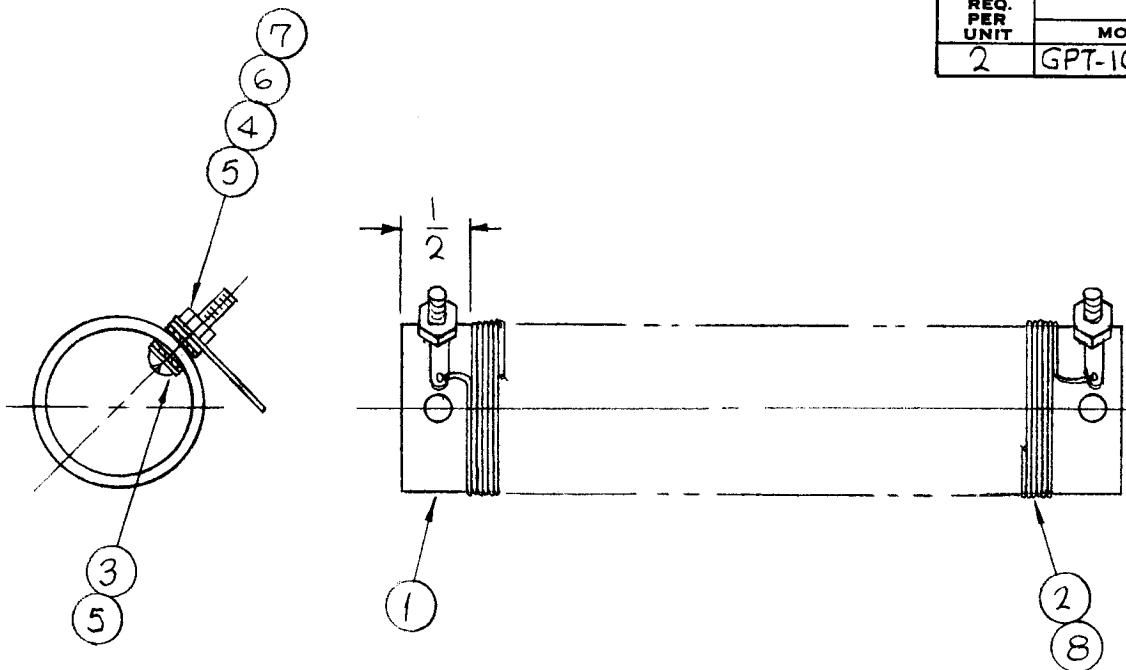
BOONTON Q METER 260A OR EQUIV.

2	11	TA111-2-2-1.875-G	TAPE, URETHANE
1	10	CI112-05-2.0-L	CORE, ROD
X	9	BS100	SOLDER, TIN, ALLOY
X	8	GL104-2	INSG, VARN, ELECT.
2	7	NTH0632BN8	NUT, HEX
2	6	TE113-149	TERM. LUG
4	5	LWEO6MRN	WASHER, LOCK, EXT.
2	4	FWO6HBN	WASHER, FLAT
2	3	SCBPO632BN8	SCREW, MACHINE
X	2	WI125-12	WIRE, CEROX
1	1	CF139-2	FORM, COIL

A	CHART I - Q ~ WAS 100 \pm 10% CHART II - Q ~ WAS 35 \pm 10%	6-9-66	16364	JB	JOB	DOB
Ø	ORIGINAL RELEASE FOR PRODUCTION	3-7-66	AA	Jc	JOB	MKE
X ₁	1/2 WAS 5/16, CF139-2 WAS CF139-1	3-4-66	X ₁	M/B		
SYM	DESCRIPTION	DATE	CH. NO.	DRAFTS	CHECKER	ENG. APP.
UNLESS OTHERWISE SPECIFIED DIMENSIONS ARE IN INCHES AND INCLUDE CHEMICALLY APPLIED OR PLATED FINISHES		SCALE 1:1				
DECIMALS .X \pm .05 .XX \pm .01 .XXX \pm .005	TOLERANCES	FRACTIONS \pm 1/64 ANGLES \pm 0° 30'	CODE A			

REQ. ITEM	PART NO.	F. BUDETTI	DESCRIPTION	SYMBOL
		THE TECHNICAL MATERIEL CORP. MAMARONECK, NEW YORK		
		COIL, RF		
		DRAWN	CHECKED	FINAL APPROVAL
		A4099-1 A		
FINISH & SPEC. NO.		ELEC. DES. APP.	MECH. DES. APP.	

REQ. PER UNIT	USED ON			A4099-2	A
	MODEL	ASSY. NO.	DATE		
2	GPT-10KLF	AX531	12-22-65		



PROCEDURE:

- 1~ ASSEMBLE ITEMS 3,4,5,6,7 TO ITEM 1
- 2~ WIND 248 TURNS OF ITEM 2 & SECURE TO ITEM 6 WITH ITEM 9.
- 3~ TEST AS PER CHART
- 4~ BAKE FOR 15 MIN AT 214°F.
- 5~ PAINT OUTSIDE WITH ITEM 8 & BAKE FOR 15 MIN. AT 214°F.
- 6~ REMOVE FROM OVEN & COOL.

ELECTRICAL SPECS:

L ~ 400 μ h \pm 10%
 Q ~ GREATER THAN 100
 TEST FREQ. ~ 790 KC

USE BOONTON Q METER MODEL 260 A OR EQUIV.

X	9	BS 100	SOLDER, TIN, ALLOY
X	8	GL104-2	INSG, VARN, ELECT.
2	7	NTH0632BN8	NUT, HEX
2	6	TE113-149	TERM. LUG
4	5	LWE06MRN	WASHER, LOCK, EXT.
2	4	FW06HBN	WASHER, FLAT
2	3	SCBPO632BN8	SCREW, MACHINE
X	2	WI 123-31	WIRE, ELECT. MAG. HT
1	1	CF139-2	FORM, COIL

A	ELECT. SPECS. Q~ WAS 110 \pm 10%	6-9-66	16364	Jc	JCB	
Ø	ORIGINAL RELEASE FOR PRODUCTION	3-7-66	-M	Jc	JCB	
X1	1/2 WAS 5/16, CF139-2 WAS CF139-1	3-4-66	X1	AKH	ha	
SYM	DESCRIPTION	DATE	CH. NO.	DRAFTS	CHECKER	ENG. APP.
UNLESS OTHERWISE SPECIFIED DIMENSIONS ARE IN INCHES AND INCLUDE CHEMICALLY APPLIED OR PLATED FINISHES		SCALE 1:1				
DECIMALS .X \pm .05 .XX \pm .01 .XXX \pm .005	TOLERANCES	FRACTIONS \pm 1/64 ANGLES \pm 0° 30'	CODE A			

REQ. ITEM	PART NO.	F. BUDETTI DESCRIPTION	SYMBOL
		THE TECHNICAL MATERIEL CORP. MAMARONECK. NEW YORK	
		COIL, RF	
		MATERIAL	
TYPE & TEMPER	HEAT TREAT. SPEC.	DRAWN	CHECKED
FINISH & SPEC. NO.		ELEC. DES. APP.	MECH. DES. APP.
		A4099-2 A	