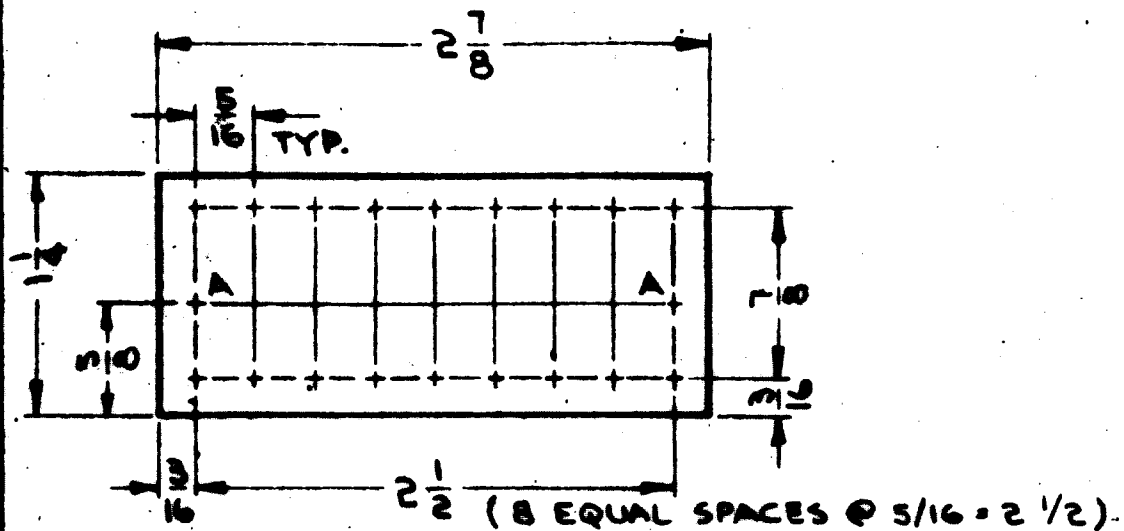


HOLE	DESCRIPTION	REQ.
UNMARKED	3/32 DIA	18
A	.189 DIA.	2

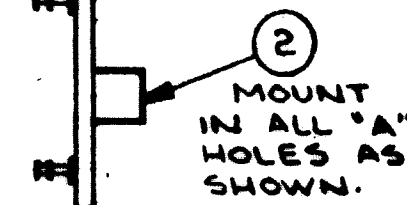


MACHINING (A3976-1)

MATERIAL: 3/32, G-10 EPOXY, LAMINATE GREEN

1 MOUNT IN ALL UNMARKED HOLES AS SHOWN.

MARKING ON THIS SIDE.



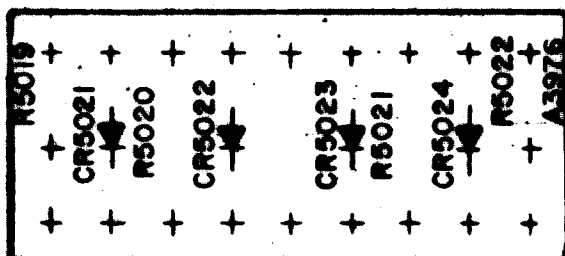
2 MOUNT IN ALL 'A' HOLES AS SHOWN.

A3976

SUB ASS'Y (A3976-3)

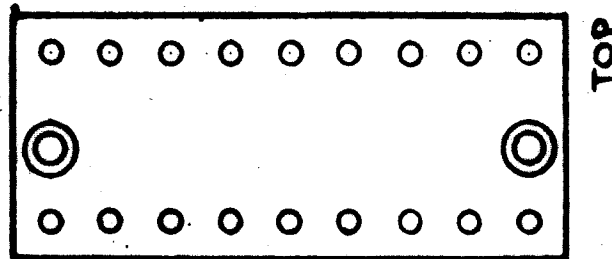
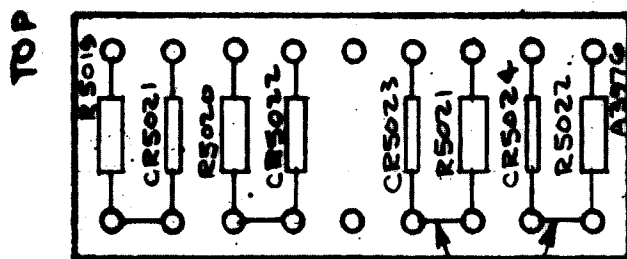
REVISIONS					
REV	DESCRIPTION	DATE	E.D.R. NO.	DRAWN	APP'D
X	EXPER. RELEASE	10-23-64	X	JL	
X1	5/8 DIM. ON MACHINING-1 WAS 3/16	12/1/64	X1	JL	W.S.
Q	ORIGINAL RELEASE FOR PRODUCTION	1/18/65	Q	J.M.	

UNLESS OTHERWISE SPECIFIED
 MARKING PROCESS: AS PER TMC SPECIFICATION S-727.
 LETTERING: 3/32 HIGH BLACK GOTHIC, LOCATED AS SHOWN.
 FUNGUS PROOFING PER TMC SPECIFICATION S-113
 MARK TMC PART NUMBER WITH LATEST REVISION LETTER.



MARKING (A3976-2)

ELECTRICAL ASSY (A3976-4)



QTY.	UNIT	PART NUMBER	DESCRIPTION	SYMBOL
X	6	WL100-7	WIRE, ELEC., BUS	
X	5	BS100	SOLDER, TIN ALLOY	
4	4	RC20GF100J	RESISTOR, FIXED, COMPOSITE	R500 TO 5022
4	3	1N270	DIODE	CR5021 TO 5024
2	2	TE108-2	NUT, PLAIN, CLINCH	A
18	1	TE127-5	TERMINAL, STUD	---

F. EATON LIST OF MATERIAL

SEE MACHINING THE TECHNICAL MATERIEL CORP. MAMARONECK, NEW YORK

SEE MACHINING TITLE TERMINAL BOARD ASSEMBLY

UNLESS OTHERWISE SPECIFIED DIMENSIONS ARE IN INCHES AND INCLUDE CHEMICALLY APPLIED OR PLATED FINISHES

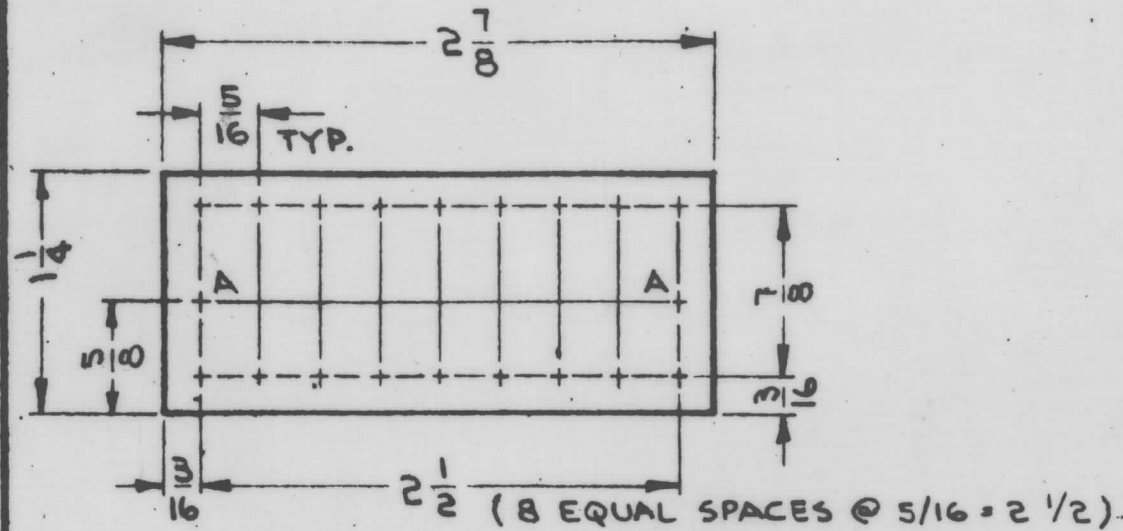
DECIMALS TOLERANCES FRACTIONS
 .X ± .05 ± 1/64
 .XX ± .01 ANGLES ± 0° 20'
 .XXX ± .005

NOTES

THE CONTENTS OF THIS DRAWING ARE THE EXCLUSIVE PROPERTY OF THE TECHNICAL MATERIEL CORP. ITS UNAUTHORIZED USE OR REPRODUCTION IN WHOLE OR IN PART IS STRICTLY FORBIDDEN.

W. JORDAN 1/18/65 A3976 Q

HOLE	DESCRIPTION	REQ.
UNMARKED	3/32 DIA	18
A	.189 DIA.	2

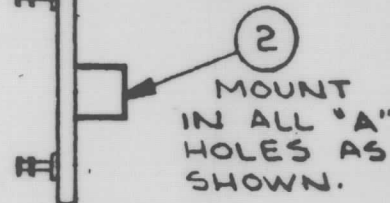


MACHINING (A3976-1)

MATERIAL: 3/32, G-10 EPOXY, LAMINATE GREEN

1 MOUNT IN ALL UNMARKED HOLES AS SHOWN.

MARKING ON THIS SIDE.

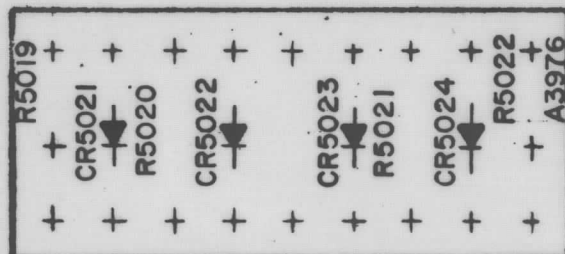


2 MOUNT IN ALL 'A' HOLES AS SHOWN.

A3976

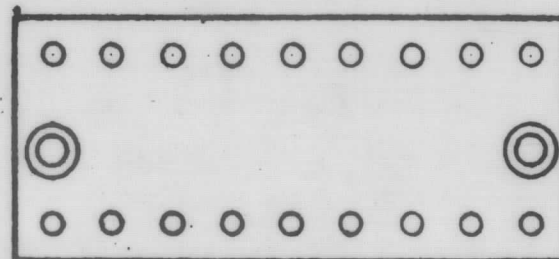
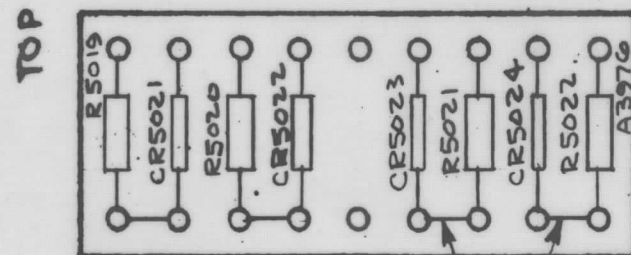
SUB ASS'Y (A3976-3)

UNLESS OTHERWISE SPECIFIED
 MARKING PROCESS: AS PER TMC SPECIFICATION S-727.
 LETTERING: 3/32 HIGH BLACK GOTHIC, LOCATED AS SHOWN.
 FUNGUS PROOFING PER TMC SPECIFICATION S-113
 MARK TMC PART NUMBER WITH LATEST REVISION LETTER.



MARKING (A3976-2)

ELECTRICAL ASSY (A3976-4)



NOTES

2	RTMU-1	A3909
QTY./UNIT	MODEL USED ON	ASSY. NO.
SCALE	CODE	
1:1	A	
THE CONTENTS OF THIS DRAWING ARE THE EXCLUSIVE PROPERTY OF THE TECHNICAL MATERIEL CORP. ITS UNAUTHORIZED USE OR REPRODUCTION IN WHOLE OR IN PART IS STRICTLY FORBIDDEN.		

REVISIONS						
SYM	DESCRIPTION	DATE	E.N.M. NO.	DRAFT	CHKD	APPD
X	EXPER. RELEASE	10-22-64	X			
X1	5/8 DIM. ON MACHINING-1 WAS 9/16	12/1/64	X1	JL	J.M	W.J.
Q	ORIGINAL RELEASE FOR PRODUCTION	1-18-65	Q		J.M	

REQ'D.	ITEM	PART NUMBER	DESCRIPTION	SYMBOL
X	6	WL100-7	WIRE, ELEC., BUSS	
X	5	BS100	SOLDER, TIN ALLOY	
4	4	RC20GF100J	RESISTOR, FIXED, COMPOSITION	R5019 TO 5022
4	3	1N270	DIODE	CR5021 TO 5024
2	2	TE108-2	NUT, PLAIN, CLINCH	A
18	1	TE127-5	TERMINAL, STUD	----

F. EATON LIST OF MATERIAL

MATERIAL: SEE MACHINING
 FINISH: SEE MACHINING
 THE TECHNICAL MATERIEL CORP.
 MAMARONECK, NEW YORK

TITLE: TERMINAL BOARD ASSEMBLY

UNLESS OTHERWISE SPECIFIED DIMENSIONS ARE IN INCHES AND INCLUDE CHEMICALLY APPLIED OR PLATED FINISHES	DRAWN G. Sorenson 10-22-64	DATE	FINAL APPROVAL RJC	DATE
DECIMALS X ± .05 XX ± .01 XXX ± .005	CHECKED W. Jordan 1-18-65	DATE		
FRACTIONS ± 1/64 ANGLES ± 0° 20'	SELECT. DES. W. Jordan 1/18/65	DATE	A3976	Q
TOLERANCES	MECH. DES. W. Jordan 1/18/65	DATE	SHEET	REV. LTR.