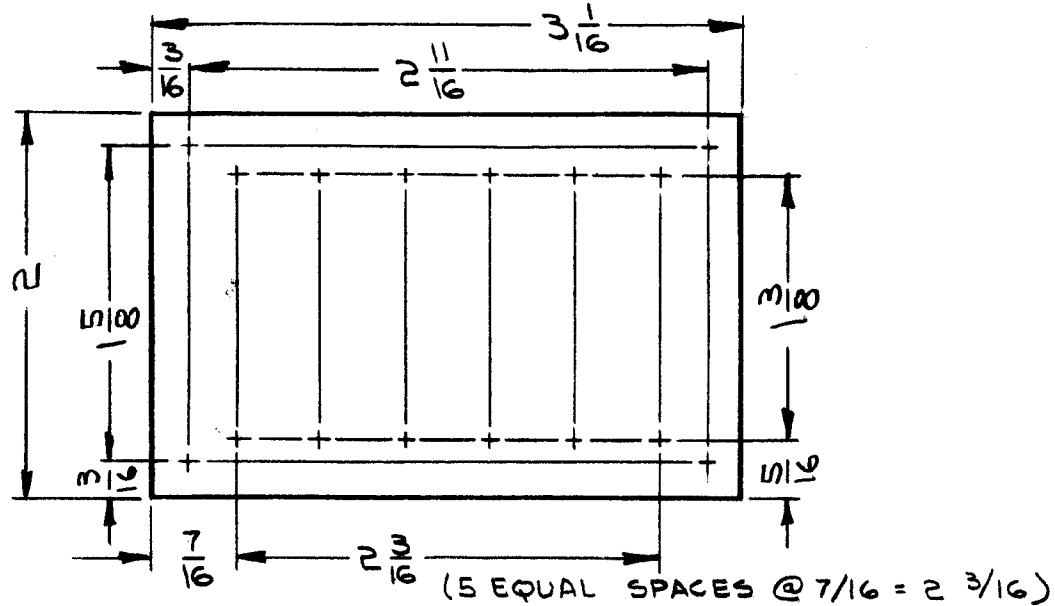
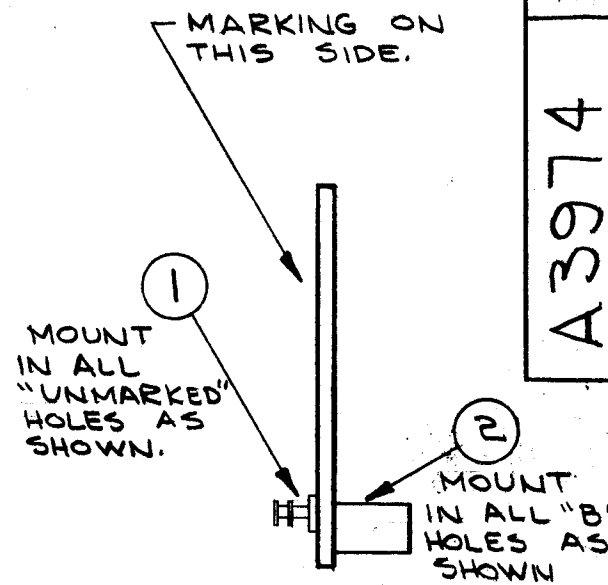


HOLE	DESCRIPTION	REQ.
UNMARKED	3/32 DIA	12
A	.189 DIA.	4



MACHINING (A3974-1)

MATERIAL: 3/32, G-11 EPOXY GLASS, LAMINATED GREEN



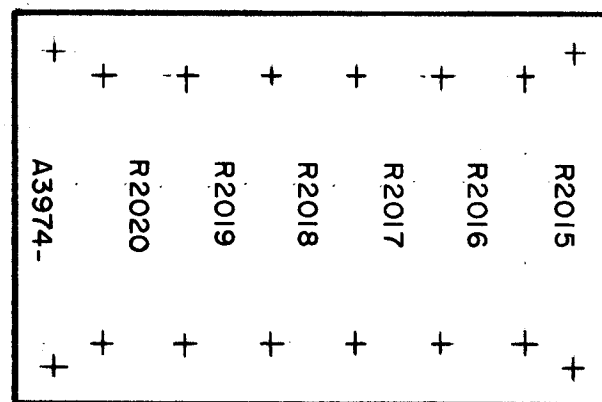
SUB ASS'Y (A3974-3)

A3974 B

REVISIONS					
SYM	DESCRIPTION	DATE	E.M.N. NO.	DRAFT	CHKD APPD
X	EXPER. RELEASE	10-22-64	X	G. S. Jordan	JM
0	ORIGINAL RELEASE FOR PRODUCTION	2-10-65	0	92	908
A	IT3 WAS RC32GF150J	9/13/65	14790	W. J. Jordan	908 W. J.
B	IT3 WAS 6 REQD. SIM DELETED w/0 CHANGED	1/9/65	15106	W. J.	908 W. J.

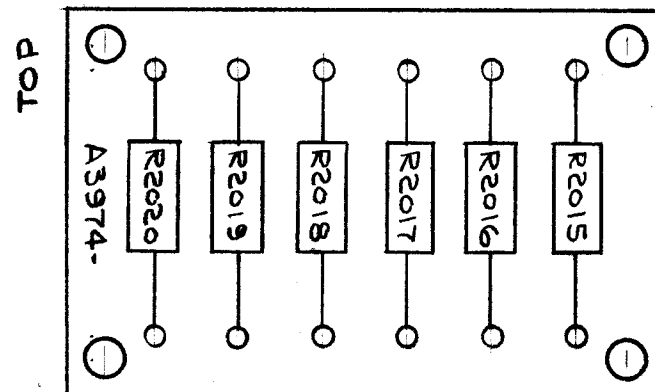
A3974-5 DELETE R2015, R2016
A3974-6 DELETE R2015

MODEL USED ON	ASSY. NO. USED	ITEM 3	SYMBOLS USED
RTIA-1	A3974-4	6	R2015 THRU R2020
RTID-1	A3974-5	4	R2017 THRU R2020
RTIE-1	A3974-6	5	R2016 THRU R2020



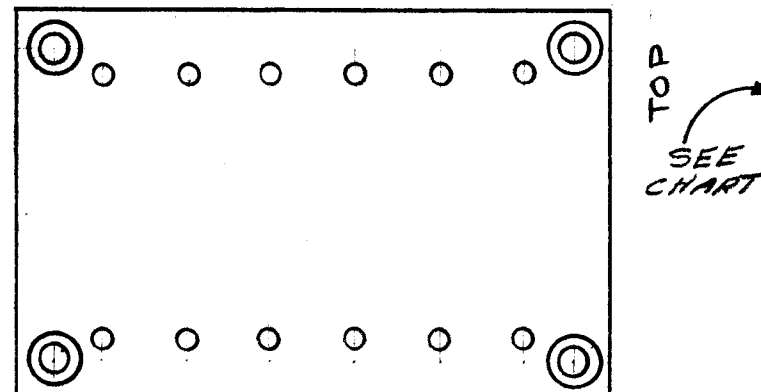
- UNLESS OTHERWISE SPECIFIED
- 1-MARKING PROCESS AS PER TMC SPEC.S-727.
 - 2-MARKING: 3/32 HIGH WHITE GOTHIC, LOCATED AS SHOWN.
 - 3-MARK TMC PART NO. WITH LATEST REVISION LETTER.
 - 4-FUNGUS PROOF PER TMC SPEC.S-113.

MARKING (A3974-2)



ELECTRICAL ASSY (A3974-4)

NOTES



1	RTIA-1 DEE	A4058
Q'TY./UNIT	MODEL USED ON	ASS'Y. NO.
SCALE 1:1	CODE A	
THE CONTENTS OF THIS DRAWING ARE THE EXCLUSIVE PROPERTY OF THE TECHNICAL MATERIEL CORP. ITS UNAUTHORIZED USE OR REPRODUCTION IN WHOLE OR IN PART IS STRICTLY FORBIDDEN.		

REQ'D.	ITEM	PART NUMBER	DESCRIPTION	SYMBOL
X	4	BS100	SOLDER, TIN, ALLOY	
*	3	RC42GF220J	RESISTOR, FIXED, COMPOSITION	
4	2	TE108-12	NUT, PLAIN, CLINCH	A
12	1	TE127-5	TERMINAL, STUD	

F. EATON		LIST OF MATERIAL	
MATERIAL	SEE MACHINING	THE TECHNICAL MATERIEL CORP. MAMARONECK, NEW YORK	
FINISH	SEE MACHINING	TITLE TERMINAL BOARD ASSEMBLY	
UNLESS OTHERWISE SPECIFIED DIMENSIONS ARE IN INCHES AND INCLUDE CHEMICALLY APPLIED OR PLATED FINISHES		DRAWN G. S. Jordan	DATE 10-22-64
DECIMALS .X ± .05 .XX ± .01 .XXX ± .005		CHECKED G. S. Jordan	DATE 2/9/65
FRACTIONS ± 1/64 ANGLES ± 0° 30'		MECH. DES. W. JORDAN	DATE 2/10/65
		FINAL APPROVAL [Signature]	
		DATE 2/10/65	
		SHEET A3974	
		REV. LTR. B	