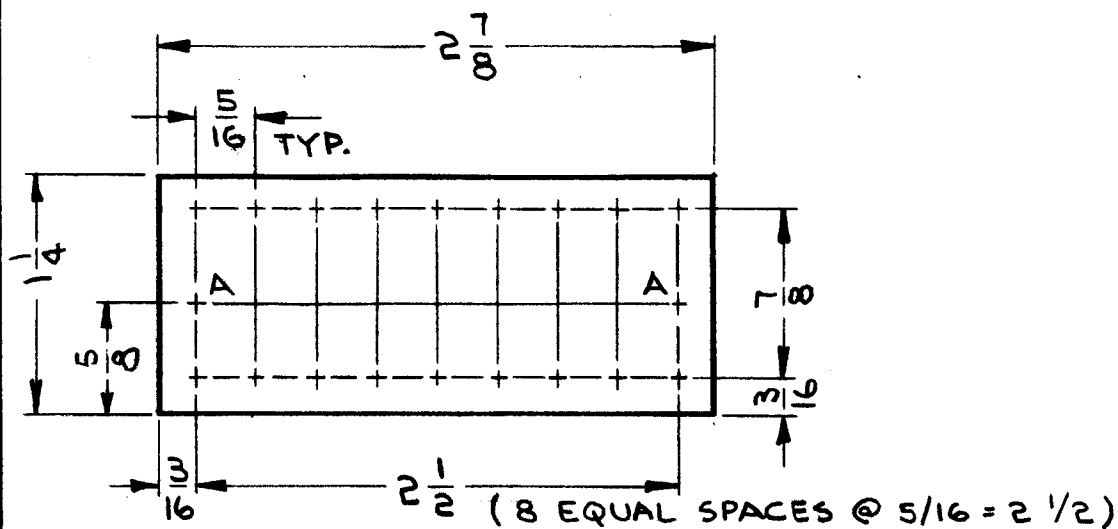


HOLE	DESCRIPTION	REQ.
UNMARKED	3/32 DIA	18
A	.189 DIA.	2

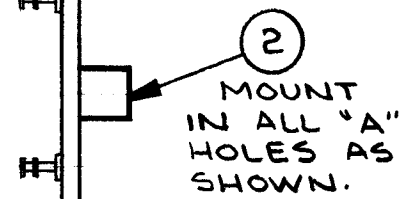


MACHINING (A3972-1)

MATERIAL: 3/32, G-11 EPOXY, LAMINATE GREEN.

① MOUNT IN ALL UNMARKED HOLES AS SHOWN.

MARKING ON THIS SIDE.

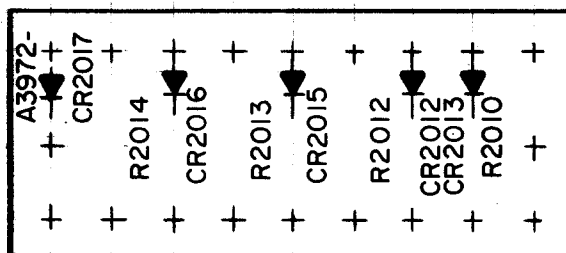


SUB ASS'Y (A3972-3)

A
A3972

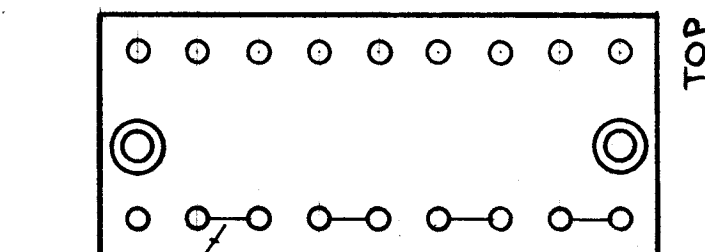
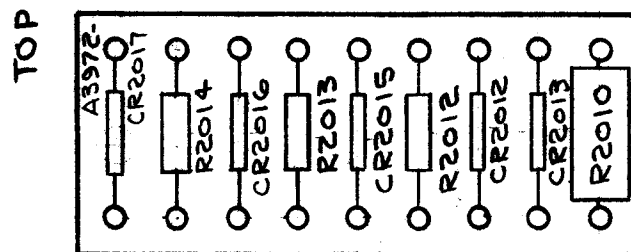
REVISIONS					
SYM	DESCRIPTION	DATE	E.M.N. NO.	DRAFT	CHKD APPD
X	EXPER. RELEASE	10-22-64	X	<i>G. Sanger</i>	
X1	5/8 DIM. ON MACHINING - 1 WAS 9/16	12/11/64	X1	JL	J.M. W.J.
X2	ITEM (8) ADDED	1-22-65	X2	<i>FL</i>	J.M.
0	ORIGINAL RELEASE FOR PRODUCTION	2.10.65	0	<i>FL</i>	<i>JCB</i>
A	IT 4 WAS IN 2070	7/13/65	14793	<i>FL</i>	<i>JCB</i>

UNLESS OTHERWISE SPECIFIED
 MARKING PROCESS: AS PER TMC SPECIFICATION S-727.
 LETTERING: 3/32 HIGH WHITE GOTHIC, LOCATED AS SHOWN
 FUNGUS PROOFING PER TMC SPECIFICATION S-113
 MARK TMC PART NUMBER WITH LATEST REVISION LETTER.



MARKING (A3972-2)

ELECTRICAL ASSY (A3972-4)



REQ'D.	ITEM	PART NUMBER	DESCRIPTION	SYMBOL
X	8	WL100-7	WIRE, ELEC, BUSS	
X	7	BS100	SOLDER, TIN ALLOY	
1	6	RC42GF333J	RESISTOR, FIXED, COMPOSITION	R2010
3	5	RC20GF100J	RESISTOR, FIXED, COMPOSITION	R2012, To 2014
2	4	1N2484	DIODE	CR2012, 2013
3	3	1N270	DIODE	CR2015 TO 2017
2	2	TE108-2	NUT, PLAIN, CLINCH	A
18	1	TE127-5	TERMINAL, STUD	---

F. EATON

LIST OF MATERIAL

MATERIAL
SEE MACHINING

THE TECHNICAL MATERIEL CORP.
MAMARONECK, NEW YORK

FINISH
SEE MACHINING

TITLE
TERMINAL BOARD ASSEMBLY

UNLESS OTHERWISE SPECIFIED
DIMENSIONS ARE IN INCHES AND INCLUDE
CHEMICALLY APPLIED OR PLATED FINISHES

DRAWN	DATE	FINAL APPROVAL	DATE
<i>G. Sanger</i>	10-22-64	<i>KTC</i>	
CHECKED <i>J. Mumford</i>	DATE 2/9/65		
ELECT. DES. <i>E. E. Eaton</i>	DATE 3/8/65		
MECH. DES. <i>W. JORDAN</i>	DATE 2/8/65		

A3972 A

Q'TY./UNIT	MODEL USED ON	ASS'Y. NO.
1	RTIA-1	A 4058
SCALE 1:1	CODE A	

THE CONTENTS OF THIS DRAWING ARE THE EXCLUSIVE PROPERTY OF THE TECHNICAL MATERIEL CORP. ITS UNAUTHORIZED USE OR REPRODUCTION IN WHOLE OR IN PART IS STRICTLY FORBIDDEN.

DECIMALS	FRACTIONS
.X ± .05	± 1/64
.XX ± .01	ANGLES ± 0° 30'
.XXX ± .005	

NOTES