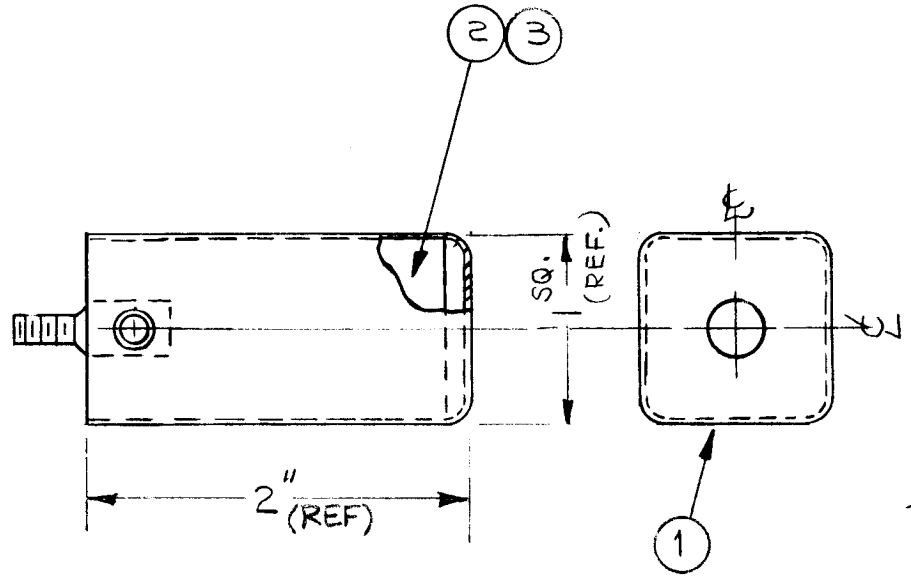


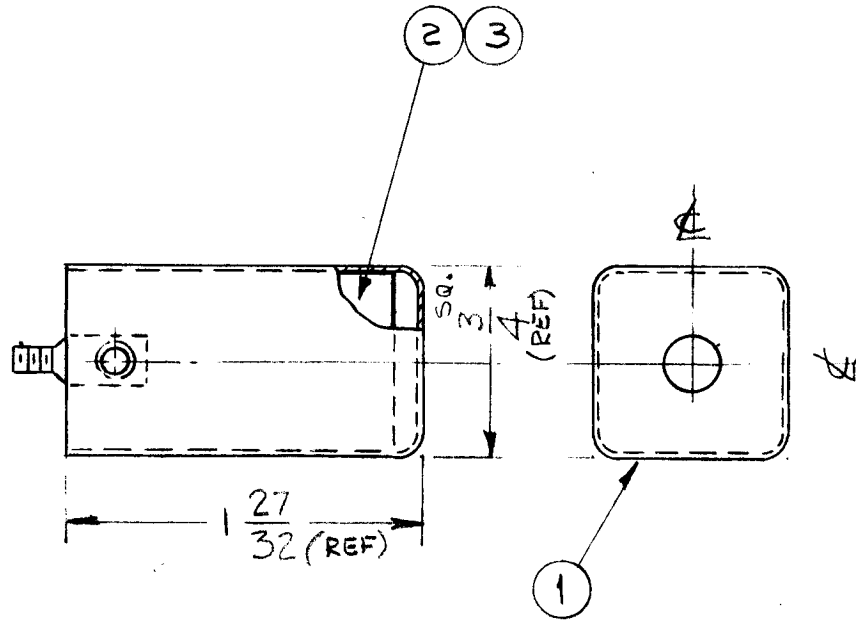
| | | | | |
|---------------|---------|------------|----------|-------------------|
| REQ. PER UNIT | USED ON | | | A3930 \emptyset |
| | MODEL | ASS'Y. NO. | DATE | |
| | 12 | VLRB-1 | 11-12-64 | |



| | | | | | |
|--------------------|----------|---------|------------------------------|-------------------|-------------------|
| 1 | 3 | TA115-2 | SHIELDING TAPE, FLEXIBLE | | |
| x | 2 | GL101 | ADHESIVE - PLIOBOND | | |
| 1 | 1 | FP202-1 | CASE, FORMED | | |
| REQ. ITEM | PART NO. | | O. POSE | DESCRIPTION | SYMBOL |
| — | | | THE TECHNICAL MATERIEL CORP. | | |
| STOCK SIZE | | | MAMARONECK. NEW YORK | | |
| — | | | SHIELD, COIL - RF | | |
| MATERIAL | | | — | | |
| — | | | TYPE & TEMPER | HEAT TREAT. SPEC. | DRAWN |
| — | | | — | | CHECKED |
| — | | | — | | FINAL APPROVAL |
| — | | | — | | A3930 \emptyset |
| FINISH & SPEC. NO. | | | ELEC. DES. APP. | MECH. DES. APP. | |

| | | | | | | |
|---|--|---|-------------|--------|---------|-----------|
| \emptyset | ORIGINAL RELEASE FOR PRODUCTION | 4.9.65 | \emptyset | JJ | | |
| X1 | ITEMS 4 & 5 DELETED FINISH NOTE DELETED | 11-16-64 | X1 | GD | | |
| X | EXPER. RELEASE | 11-12-64 | X | PK | | |
| SYM | DESCRIPTION | DATE | CH. NO. | DRAFTS | CHECKER | ENG. APP. |
| UNLESS OTHERWISE SPECIFIED DIMENSIONS ARE IN INCHES AND INCLUDE CHEMICALLY APPLIED OR PLATED FINISHES | | SCALE NONE | | | | |
| DECIMALS .X \pm .05 .XX \pm .01 .XXX \pm .005 | TOLERANCES | FRACTIONS \pm 1/64 ANGLES \pm 0° 30' | CODE A | | | |

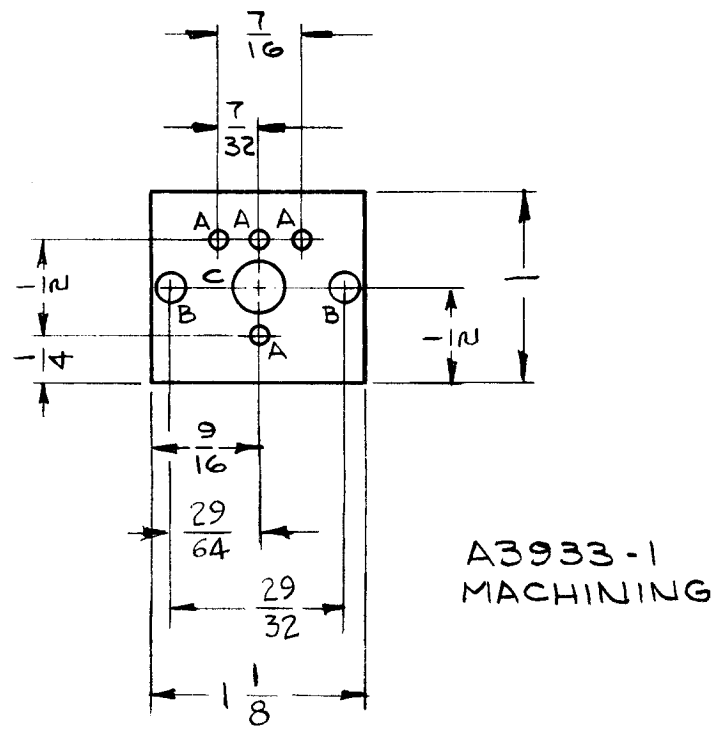
| | | | | |
|---------------|---------|-----------|----------|-------------------|
| REQ. PER UNIT | USED ON | | | A3931 \emptyset |
| | MODEL | ASSY. NO. | DATE | |
| | 5 | VLRB-1 | 11-12-64 | |



| | | | | |
|---|---|---------|--------------------------|--|
| 1 | 3 | TA115-3 | SHIELDING TAPE, FLEXIBLE | |
| X | 2 | GL101 | ADHESIVE-PLIOBOND | |
| 1 | 1 | FP202-2 | CASE, FORMED | |

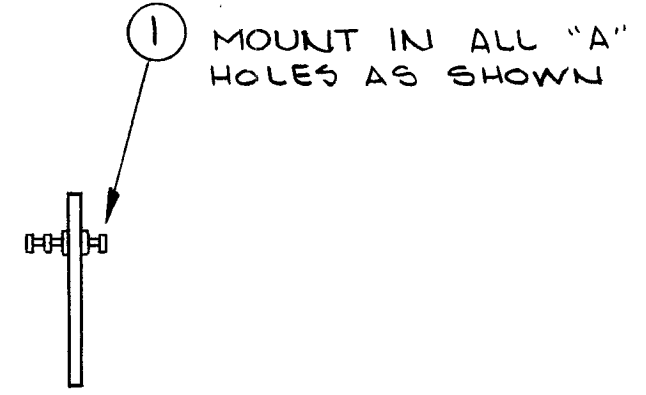
| SYM | DESCRIPTION | DATE | CH. NO. | DRAFTS | CHECKER | ENG. APP. | REQ. ITEM | PART NO. | O POSE | DESCRIPTION | SYMBOL | |
|---|---|---|-------------|-------------|---------|-----------|--------------------|-------------------|-----------------|--|--------------------|--|
| \emptyset | ORIGINAL RELEASE FOR PRODUCTION | 4-9-65 | \emptyset | \emptyset | | | | | | THE TECHNICAL MATERIEL CORP. MAMARONECK, NEW YORK | | |
| X1 | ITEMS 4 & 2 DELETED FINISH NOTES DELETED | 11-16-64 | | S.D.L. | | | | STOCK SIZE | | | SHIELD, COIL - OSC | |
| X | EXPER. RELEASE | 11-12-64 | X | | | | | MATERIAL | | | | |
| UNLESS OTHERWISE SPECIFIED DIMENSIONS ARE IN INCHES AND INCLUDE CHEMICALLY APPLIED OR PLATED FINISHES | | SCALE NONE | | | | | | | | | | |
| DECIMALS .X \pm .05 .XX \pm .01 .XXX \pm .005 | TOLERANCES | FRACTIONS \pm 1/64 ANGLES \pm 0° 30' | CODE A | | | | TYPE & TEMPER | HEAT TREAT. SPEC. | DRAWN | CHECKED | FINAL APPROVAL | |
| | | | | | | | SEE NOTES | | | | A3931 \emptyset | |
| | | | | | | | FINISH & SPEC. NO. | ELEC. DES. APP. | MECH. DES. APP. | | | |

| | | | | | |
|---------------|---------|-----------|----------|-------|---|
| REQ. PER UNIT | USED ON | | | A3933 | Ø |
| | MODEL | ASSY. NO. | DATE | | |
| 12 | VLRB-1 | | 11-12-64 | | |



A3933-1
MACHINING

- A - .073 DIA. 4 REQ.
- B - 5/32 DIA. 2 REQ.
- C - 1/4 DIA. 1 REQ.

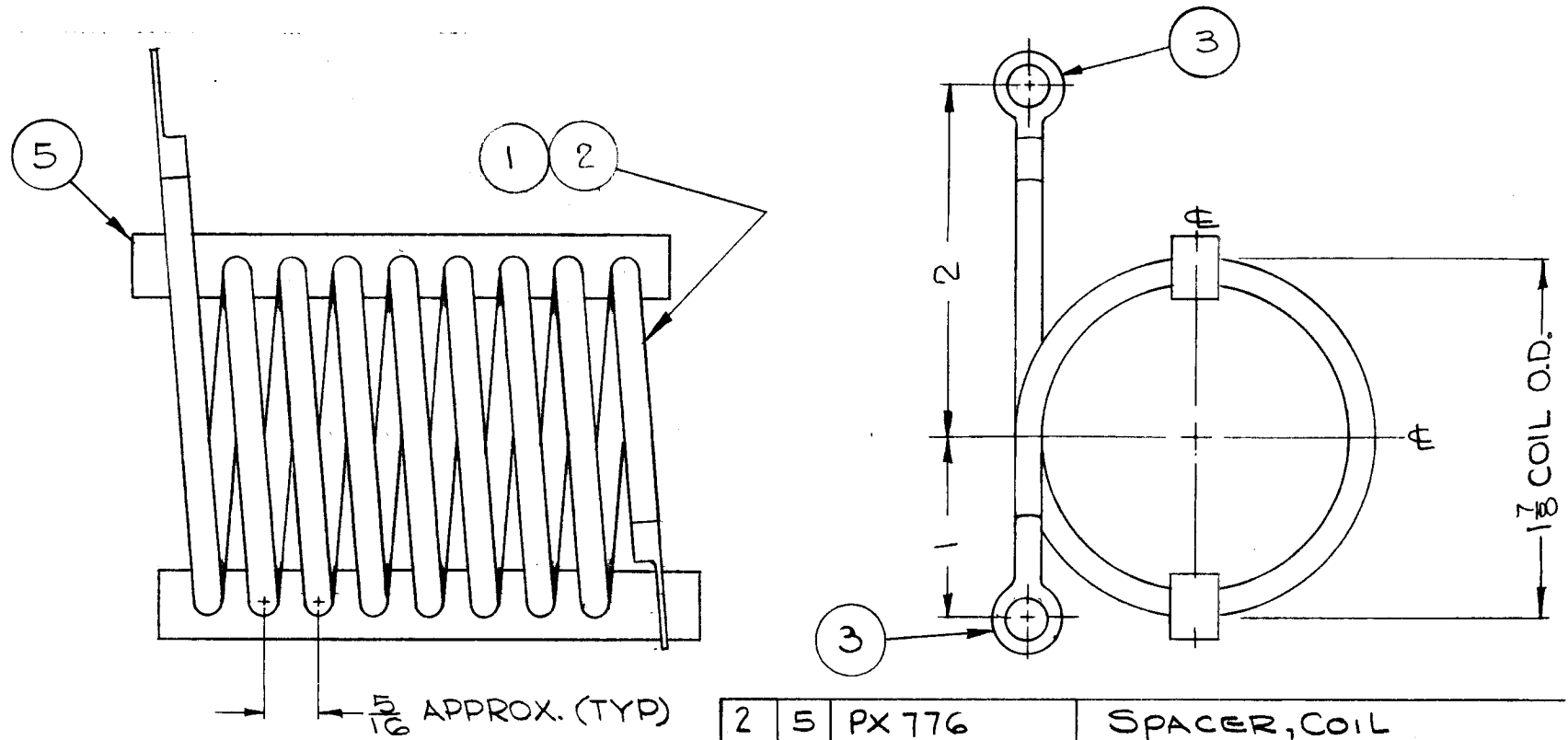


A3933-2
SUB ASSY.

| | | | | |
|---|---------------------------------|---|---|----------------------------------|
| 4 | 1 | TE168-4B | TERMINAL, STUD | A |
| REQ. ITEM | PART NO. | | DESCRIPTION | SYMBOL |
| Ø | ORIGINAL RELEASE FOR PRODUCTION | | 4.7.65 | Ø 92 |
| XI | MATERIAL WAS BAKELITE | | 12-22-64 | S.D. |
| X | EXPER. RELEASE | | 11-12-64 | X [Signature] |
| SYM | DESCRIPTION | | DATE | CH. NO. DRAFTS CHECKER ENG. APP. |
| UNLESS OTHERWISE SPECIFIED DIMENSIONS ARE IN INCHES AND INCLUDE CHEMICALLY APPLIED OR PLATED FINISHES | | SCALE 1:1 | | |
| DECIMALS .X ± .05 .XX ± .01 .XXX ± .005 | TOLERANCES | | FRACTIONS ± 1/64 ANGLES ± 0° 30' | CODE A |
| TYPE & TEMPER | | HEAT TREAT. SPEC. | DRAWN | CHECKED |
| NATURAL | | | [Signature] | [Signature] |
| FINISH & SPEC. NO. | | ELEC. DES. APP. | MECH. DES. APP. | A3933 Ø |
| 1/16 THK STOCK SIZE | | THE TECHNICAL MATERIEL CORP. MAMARONECK. NEW YORK | | |
| LINEN BASE PHENOLIC | | TERMINAL BOARD, TRANSFORMER 4-TERMINALS | | |
| [Signature] | | [Signature] | | [Signature] 4/9/65 |

| REQ. PER UNIT | USED ON | | |
|---------------|---------------|------------|--------|
| | MODEL | ASS'Y. NO. | DATE |
| 2 | TER-25K/600B | | 9-9-63 |
| 2 | TER-18K/600BF | | 9-9-63 |

A-3980B



NOTES:
 9 TURNS WOUND ON 1 1/2 DIA. FORM
 FINISH: SILVER PLATE .0003 THK
 * LENGTHS APPROX:

| | | | | |
|---|-----|----------|-------------------|------------------------------|
| 2 | 5 | PX 776 | SPACER, COIL | |
| X | 4 | BS-100 | SOLDER, TIN ALLOY | |
| 2 | 3 | TE-141-3 | TERMINAL, LUG #10 | |
| * | 45" | 2 | PX-370-9-7 | INSULATION, SLEEVING, TEFLON |
| * | 46" | 1 | TU-100-2N | TUBING, COPPER, SOFT |

| SYM | DESCRIPTION | DATE | CH. NO. | DRAFTS | CHECKER | ENG. APP. |
|---|----------------|--------|---------|--------|---------|-----------|
| B | UPDATED & REV. | 6.3.68 | 18941 | KY | | FB |
| UNLESS OTHERWISE SPECIFIED DIMENSIONS ARE IN INCHES AND INCLUDE CHEMICALLY APPLIED OR PLATED FINISHES | | SCALE | | | | |
| DECIMALS | FRACTIONS | CODE | | | | |
| .X ± .05 | ± 1/64 | | | | | |
| .XX ± .01 | ANGLES | | | | | |
| .XXX ± .005 | ± 0° 30' | | | | | |

| REQ. ITEM | PART NO. | DESCRIPTION | SYMBOL |
|--------------------|-------------------|--|-----------------|
| STOCK SIZE | | THE TECHNICAL MATERIEL CORP. MAMARONECK, NEW YORK | |
| MATERIAL | | COIL ASSEMBLY | |
| TYPE & TEMPER | HEAT TREAT. SPEC. | DRAWN | CHECKED |
| FINISH & SPEC. NO. | | ELEC. DES. APP. | MECH. DES. APP. |

A-3980B

| SYMBOL(S) | ITEM NO. | USED TO MOUNT | QTY |
|-----------|----------|---------------|-----|
| DS101 | 1 | | |
| XF101 | 2 | | |
| F101 | 3 | | |
| LS101,102 | 5 | | |
| | 6 | LS101 & MS395 | 8 |
| | 9 | LS101 & MS395 | 8 |
| | 10 | LS101 & MS395 | 8 |
| | 11 | NP103-49 | 4 |
| S101 | 12 | | |
| XDS101 | 13 | | |

| REQ. PER UNIT | USED ON | | | A3998 | Ø |
|---------------|---------|------------|---------|-------|---|
| | MODEL | ASS'Y. NO. | DATE | | |
| 1 | LSP-6X | A4000 | 4/15/65 | | |

| | | | |
|---|----|---------------|---------------------|
| 1 | 13 | TS106-1 | LIGHT, IND-WHT |
| 1 | 12 | ST22K | SW, TOGGLE-DPST |
| 4 | 11 | SFB0265SN3 | SCR, TAP. , THD CTG |
| 8 | 10 | SCBP0632BN8 | SCR, MACH |
| 8 | 9 | NTH0632BN8 | NUT, PIN, HEX |
| 1 | 8 | NP103-49 | PL, IDENT-COML |
| 2 | 7 | MS395 | GRILLE, SPKR |
| 8 | 6 | LWE06MRN | WASH. , LK, EXT |
| 2 | 5 | LS101 | LDSKR, PM, 4IN. |
| 1 | 4 | LDI646/MS4115 | PNL, FR |
| 1 | 3 | FU102-1 | FUSE, CTG, 1A |
| 1 | 2 | FH104-3 | FUSEHOLDER, IND |
| 1 | 1 | BI100-51 | LAMP, GLOW |

| REQ. | ITEM | PART NO. | DESCRIPTION | SYMBOL |
|---|------|----------|-------------------------------------|-----------------|
| | | | BUDETTI | |
| | | | THE TECHNICAL MATERIEL CORP. | |
| | | | MAMARONECK. NEW YORK | |
| STOCK SIZE | | | PANEL ASSEMBLY, FRONT | |
| MATERIAL | | | | |
| UNLESS OTHERWISE SPECIFIED DIMENSIONS ARE IN INCHES AND INCLUDE CHEMICALLY APPLIED OR PLATED FINISHES | | | 4-27-65 ENG COORD | |
| SCALE | | | 4-27-65 CHECKED | |
| TYPE & TEMPER | | | HEAT TREAT. SPEC. | |
| DRAWN | | | CHECKED | |
| FINISH & SPEC. NO. | | | ELEC. DES. APP. | MECH. DES. APP. |
| | | | A3998 | Ø |