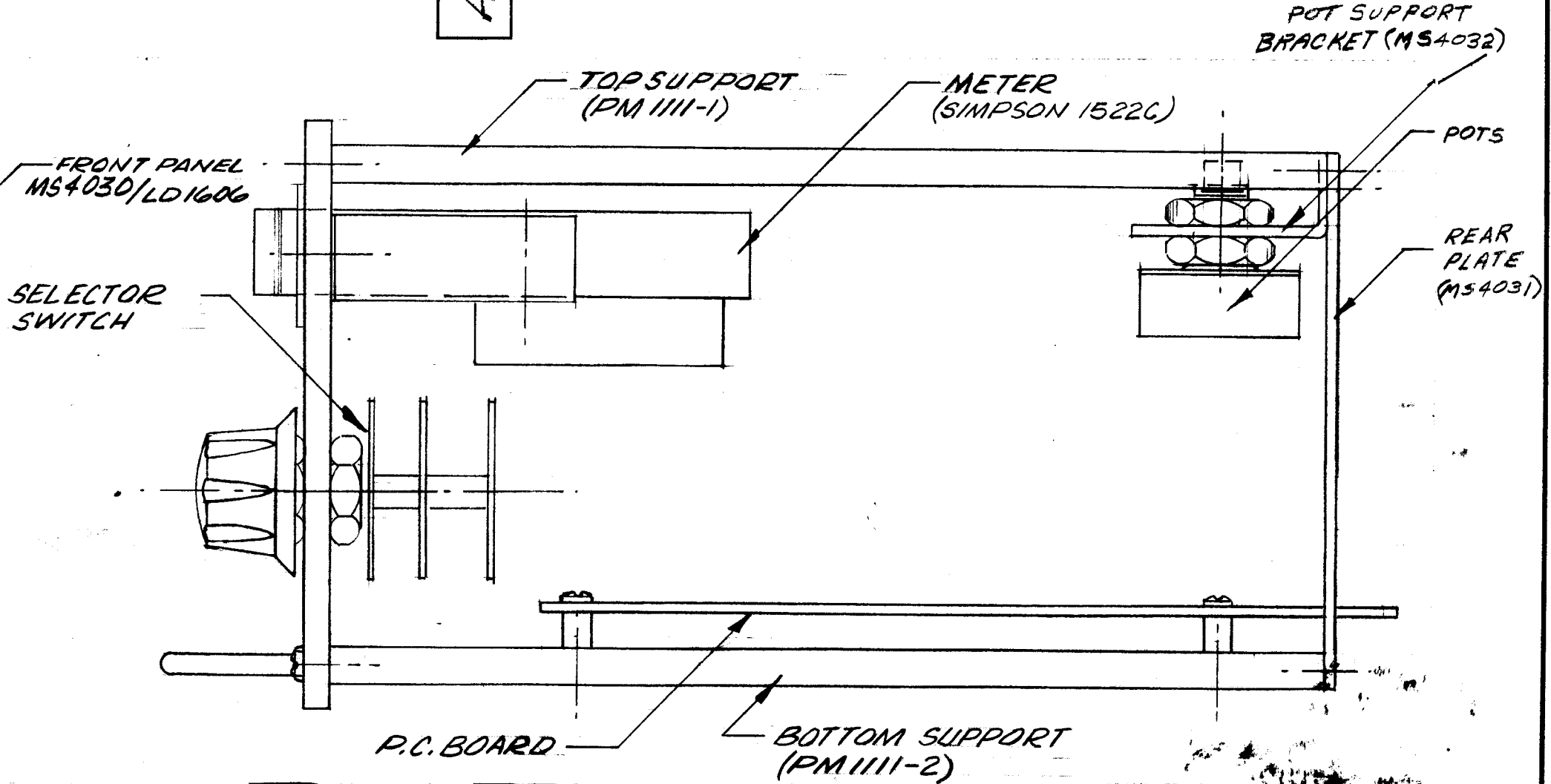
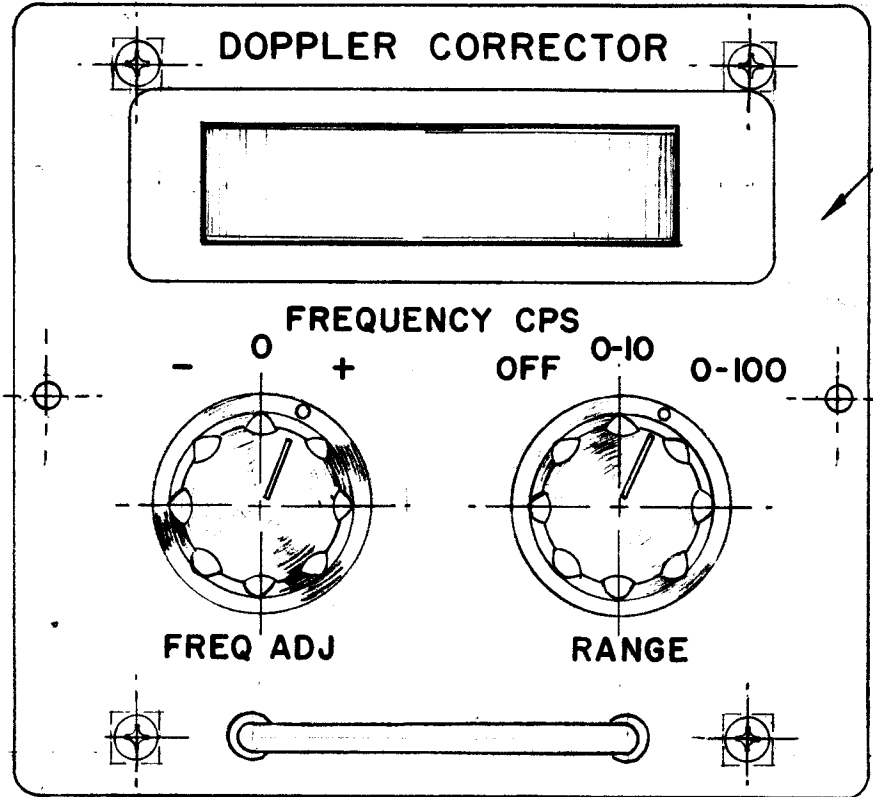


A3841

REVISIONS					
SYM	DESCRIPTION	DATE	E.M.N. NO.	DRAFT	CHKD APPD
X1	PICTORIAL UPDATED	10/16/64	---	WR	
Ø	NO LONGER REQUIRED	10/5/65	Ø	JG	



NO LONGER REQUIRED
REFER TO A3899

REQ'D.	ITEM	PART NUMBER	DESCRIPTION	SYMBOL
LIST OF MATERIAL				
MATERIAL		THE TECHNICAL MATERIEL CORP. MAMARONECK, NEW YORK		
FINISH		TITLE ASSEMBLY-DOPPLER CORRECTOR		
UNLESS OTHERWISE SPECIFIED DIMENSIONS ARE IN INCHES AND INCLUDE CHEMICALLY APPLIED OR PLATED FINISHES		DRAWN E. D. JENSEN	DATE 9/15/64	FINAL APPROVAL <i>[Signature]</i>
DECIMALS .X ± .05 .XX ± .01 .XXX ± .005		CHECKED @ P.S.	DATE 10-22-64	DATE 10/5/65
TOLERANCES ± 1/64 ANGLES ± 0° 30'		ELECT. DES.	DATE	A 3841
		MECH. DES.	DATE	Ø
		SHEET		REV. LTR.

PFCB-1	
Q'TY./UNIT	MODEL USED ON
SCALE NONE	CODE
THE CONTENTS OF THIS DRAWING ARE THE EXCLUSIVE PROPERTY OF THE TECHNICAL MATERIEL CORP. ITS UNAUTHORIZED USE OR REPRODUCTION IN WHOLE OR IN PART IS STRICTLY FORBIDDEN.	

NOTES