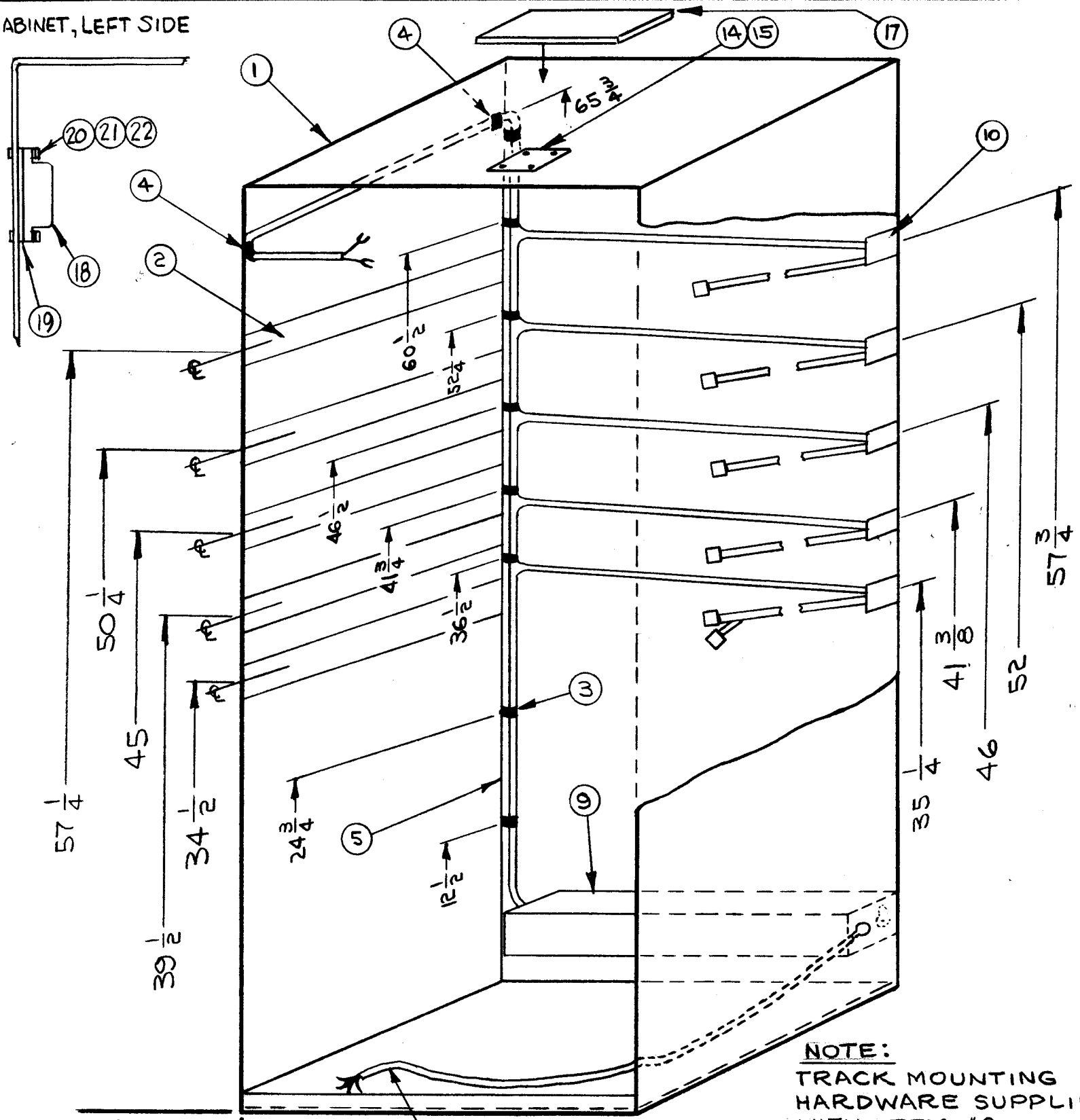


CABINET, LEFT SIDE



FRONT VIEW

LOCATING BASE LINES

NOTES

NOTE:
TRACK MOUNTING
HARDWARE SUPPLIED
WITH ITEM #2

1	RAK-43	VLFC-1
Q'TY./UNIT	MODEL USED ON	ASS'Y. NO.
SCALE	CODE	
	A	

THE CONTENTS OF THIS DRAWING ARE THE EXCLUSIVE PROPERTY OF THE TECHNICAL MATERIEL CORP. ITS UNAUTHORIZED USE OR REPRODUCTION IN WHOLE OR IN PART IS STRICTLY FORBIDDEN.

REVISIONS						
SYM	DESCRIPTION	DATE	E.M.N. NO.	DRAFT	CHKD	APPD
X	EXPER. RELEASE	8-5-64	X			
Q	ORIGINAL RELEASE FOR PRODUCTION	9-2-64	S			
A	REVISED & UPDATED	9-23-64	12437	ASB		
B	REVISED & UPDATED	7-13-66	16530	HLA		

A3738 B

ITEM NO.	USED TO MOUNT	QTY
	3	5
6 & 7	4	2
	9	4
	12	15
8	4	2
15	14	4
16	4	2

ITEM	QTY	PART NUMBER	DESCRIPTION
1	23	CA480-3-62	CBL ASSY, RF (PLUG INTO ITEM 18)
2	22	NT137-0632	NUT, PLN, HEX-N
2	21	WA109-36	WASHER, NM
2	20	SCI430632B6	SCREW, MACHINE-N
1	19	IM235	INSULATOR, FIL
1	18	FX211	FILTER, LP, 40KC
1	17	AD103-5	FILTER, AIR CONDITIONER-ALUMINUM
2	16	FW10HBN	WASHER, FLAT
4	15	SFBO256SN3	SCREW, TAP, THREAD CUTTING
1	14	NPI03-42	NAMEPLATE, IDENTIFICATION
1	13	CA908-1	CABLE ASSEMBLY, POWER-3/C
5	12	A3517	SPRING, ASSY, RETRACTING
1	11	PX871-3	WIRING DIAG., LAM (MT. IN REAR DOOR)
X	10	GL 133	ADHESIVE (USE TO CEMENT LABELS)
1	9	A3730	FILTER, ASSEMBLY,
2	8	NTH1032BN12	NUT, PLAIN, HEX
26	7	LWE10MRN	WASHER, LOCK, EXTERNAL
26	6	SCBP1032BN5	SCREW, MACHINE
1	5	CA906	WIRING HARNESS BRANCHED
2	4	CU102-2	CLAMP, LOOP
7	3	CU131-5	CLAMP, LOOP, CUSHION
5	2	TK115-18	TRACK SET, TILT LOCK
1	1	MS4915	CABINET, ELECTRICAL EQUIPMENT

REQ'D.		ITEM	PART NUMBER	DESCRIPTION	SYMBOL
M. STURMER LIST OF MATERIAL					
MATERIAL			THE TECHNICAL MATERIEL CORP. MAMARONECK, NEW YORK		
FINISH			TITLE FINAL ASSY, RAK-43		
UNLESS OTHERWISE SPECIFIED DIMENSIONS ARE IN INCHES AND INCLUDE CHEMICALLY APPLIED OR PLATED FINISHES		DRAWN	DATE	FINAL APPROVAL	
		Checked	8-5-64		
			9-4-64		
DECIMALS .X ± .05 .XX ± .01 .XXX ± .005		TOLERANCES		DATE	
		± 1/64 ANGLES ± 0° 30'		9-4-64	
			ELECT. DES.		DATE
			MECH. DES.		DATE
			9-4-64		9-4-64
				SHEET	
				A3738	
				B	
				REV. LTR.	