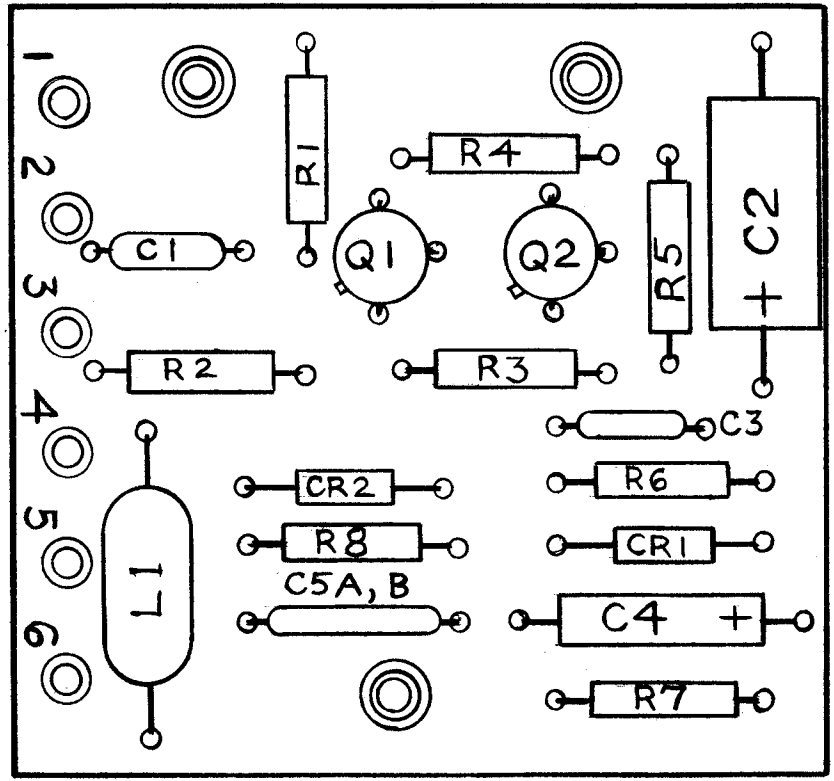
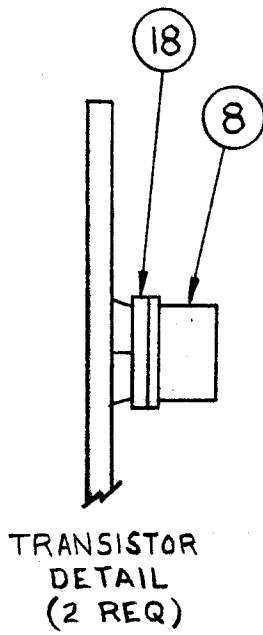


A3714 E

REVISIONS

SYM	DESCRIPTION	DATE	E.M.N. NO.	DRAFT	CHKD	APPD
X	EXPERIMENTAL RELEASE	7-13-64	-	NP	@	
O	ORIGINAL RELEASE FOR PRODUCTION	7-23-64	-	NSB		
A	ON B/M IT. 18 ADDED. ON PICT. TSTR. DETAIL ADD.	10-27-64	12790	9.2.		
B	ON B/M IT. 16 WAS TE164-7.	2-15-65	13475	9.2.		
C	IT. 16 (TE164-17) & IT. 17 (TE127-3) DELETED; "A3714-1 SUB-ASSY" DELETED; TITLE WAS "ASSY, PRINTED CIRCUIT BOARD."	3-15-65	13699	9.2.		
D	ADDED IT. 19, QTY IT. 17 WAS 2, DELE CR 2.	8-5-66	16710	RME		
E	TOL. "J" WAS "K," ITEMS 9 THRU 15	3-22-67	18020	L.A.K.		



REQ'D.	ITEM	PART NUMBER	DESCRIPTION	SYMBOL
1	19	IN252	DIODE	CR2
2	18	PX 829-1	PAD, TRANSISTOR, MOUNTING	
	17	DELETED		
	16	DELETED		
1	15	RC20GF823J	RESISTOR, FIXED, COMPOSITION	R8
1	14	822J		R7
1	13	562J		R5
2	12	472J		R4, R6
1	11	332J		R3
1	10	155J		R1
1	9	RC20GF103J	RESISTOR, FIXED, COMPOSITION	R2
2	8	2N1370-7	TRANSISTOR	Q1, Q2
1	7	IN270	DIODE	CR1
1	6	CL140-5	COIL, FIXED, RF	L1
1	5	CE105-50-15	CAPACITOR, FIXED, ELECTROLYTIC	C2
1	4	CE105-5-15	ELECTROLYTIC	C4
1	3	CC100-19	CERAMIC	C5A, B
2	2	CC112R224M	CAPACITOR, FIXED, CERAMIC	C1, C3
1	1	PC114	PRINTED CIRCUIT BOARD	

A3714-2

T. AALTONEN LIST OF MATERIAL

MATERIAL: ————

FINISH: ————

THE TECHNICAL MATERIEL CORP.  
MAMARONECK, NEW YORK

TITLE: PRINTED CIRCUIT BOARD ASSY, XMTR METER

DRAWN: <i>N. Peters</i>	DATE: 7-13-64	FINAL APPROVAL: <i>[Signature]</i>	DATE:
CHECKED: @	DATE: 7-15-64		
ELECT. DES. <i>[Signature]</i>	DATE: 7-15-64	A3714	E
MECH. DES. <i>[Signature]</i>	DATE: 7-15-64		

UNLESS OTHERWISE SPECIFIED DIMENSIONS ARE IN INCHES AND INCLUDE CHEMICALLY APPLIED OR PLATED FINISHES

DECIMALS	FRACTIONS
.X ± .05	± 1/64
.XX ± .01	ANGLES ± 0° 30'
.XXX ± .005	

NOTES

1	SME-1	A3770
Q'TY./UNIT	MODEL USED ON	ASS'Y. NO.
SCALE: 2:1	CODE: A	
THE CONTENTS OF THIS DRAWING ARE THE EXCLUSIVE PROPERTY OF THE TECHNICAL MATERIEL CORP. ITS UNAUTHORIZED USE OR REPRODUCTION IN WHOLE OR IN PART IS STRICTLY FORBIDDEN.		