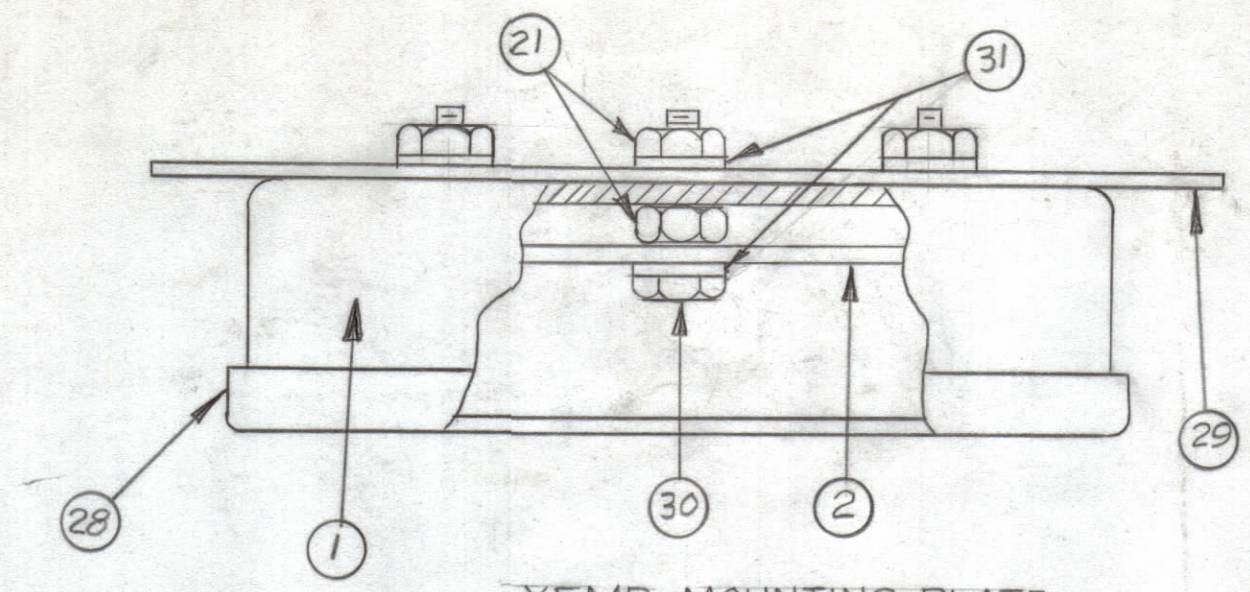
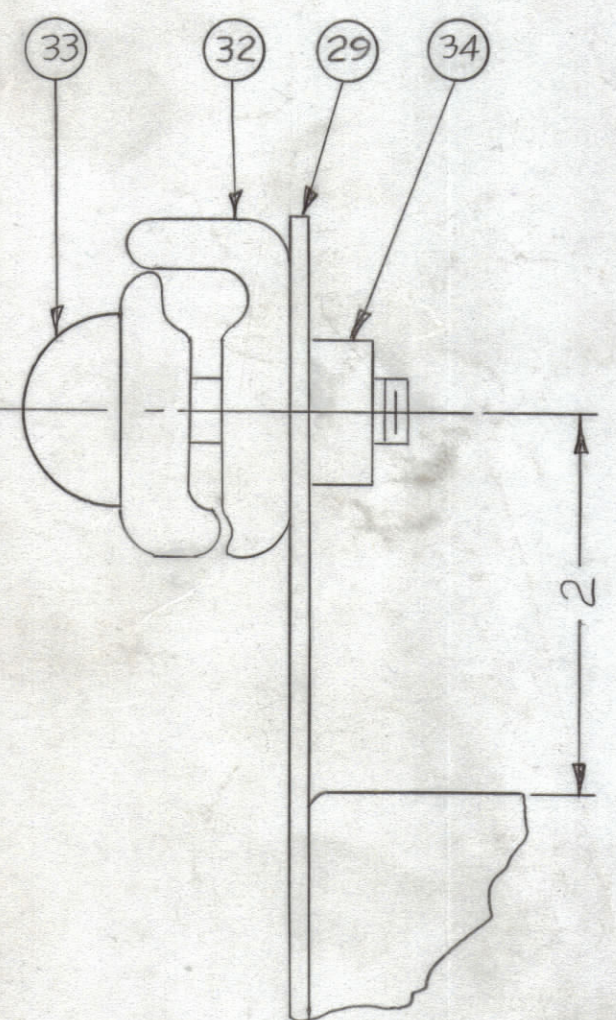


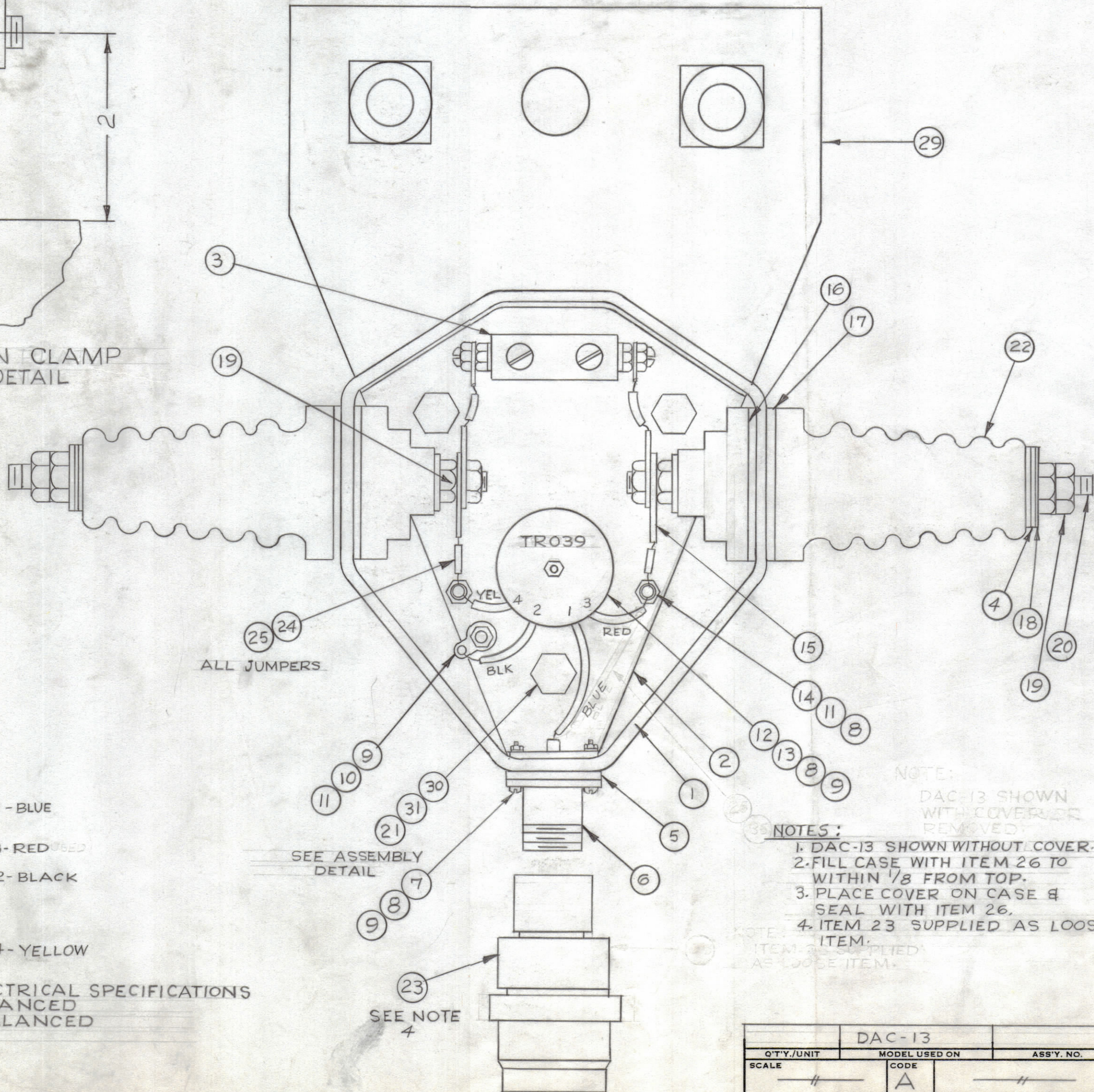
NOTE:
 1-FILL CASE WITH ITEM 26 TO WITHIN 1/8 FROM TOP.
 2-PLACE COVER ON CASE AND SEAL WITH ITEM 26.



XFMR MOUNTING PLATE
 CASE MOUNTING DETAIL



SUSPENSION CLAMP
 MOUNTING DETAIL



TR039 ELECTRICAL SPECIFICATIONS
 200Ω BALANCED
 50Ω UNBALANCED
 2-30 MC.

SEE ASSEMBLY
 DETAIL

SEE NOTE
 4

NOTES:
 1. DAC-13 SHOWN WITHOUT COVER.
 2. FILL CASE WITH ITEM 26 TO WITHIN 1/8 FROM TOP.
 3. PLACE COVER ON CASE & SEAL WITH ITEM 26.
 4. ITEM 23 SUPPLIED AS LOOSE ITEM.

DAC-13	
Q'TY./UNIT	MODEL USED ON
SCALE	CODE
	A

THE CONTENTS OF THIS DRAWING ARE THE EXCLUSIVE PROPERTY OF THE TECHNICAL MATERIEL CORP. ITS UNAUTHORIZED USE OR REPRODUCTION IN WHOLE OR IN PART IS STRICTLY FORBIDDEN.

REVISIONS						
ZONE	SYM	DESCRIPTION	DATE	E.M.N. NO.	DRAFT	CHKD
-#	X	EXPERIMENTAL RELEASE	6/10/64	X	A.M.	
-#	Ø	ORIGINAL RELEASE FOR PRODUCTION	6/15/64	Ø	A.M.	
-#	A	IT. 4 WAS RY113-1 IT. 5 WAS GA106 IT. 32 QTY WAS 2	7/15/65	15409	REV.	
-#	B	NOTE & SHEET 2 ADDED	6-20/90		G.B.L.	

NOTE:
 SHEET 1 OBSOLETE USE SHEET 2

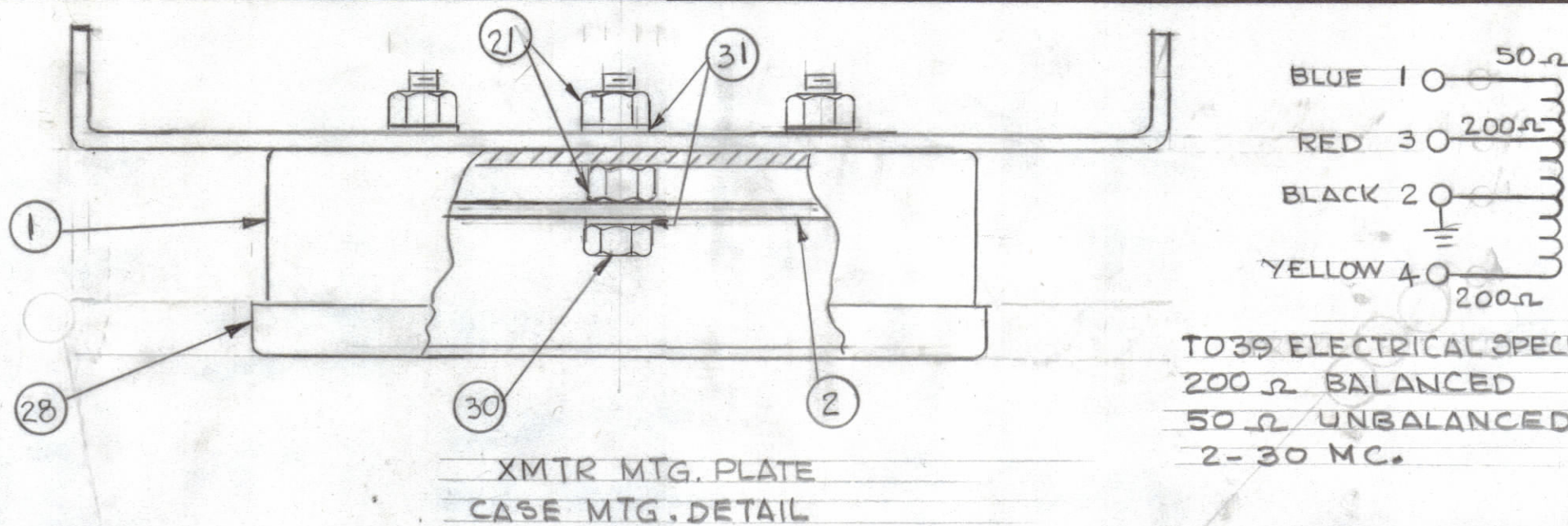
REQ'D.	ITEM	PART NUMBER	DESCRIPTION	SYMBOL
2	34	SUPPLIED W/CLAMP	NUT, SQUARE	
2	33	SUPPLIED W/CLAMP	BOLT	
1	32	CUI24	CLAMP, SUSPENSION CABLE	
6	31	LWS25MRN	LOCKWASHER, SPLIT	
3	30	5CHH2520BN16	SCREW, MACHINE	
1	29	MS790	PLATE, CASE MOUNTING	
1	28	PM231	COVER	
X	27	BS100	SOLDER, TIN ALLOY	
X	26	GL106	COMPOUND, POTTING	
X	25	WL100-3	WIRE, BUSS BAR	
X	24	PX104-1-066	INSULATION, SLEEVING	
1	23	PL206	ADAPTER (LOOSE ITEM)	
2	22	NS107	INSULATOR, FEED-THRU	
6	21	NTH2520BN14	NUT, HEX	
2	20	P/O NS107	INSULATOR STUD	
8	19	P/O NS107	NUT, HEX	
4	18	P/O NS107	WASHER, FLAT	
2	17	GA115	GASKET, NEOPRENE	
2	16	P/O NS107	GASKET, CORK	
4	15	TE132	TERMINAL, LUG	
2	14	TE102-2	TERMINAL, TURRET	
1	13	SCBP0440BN12	SCREW, MACHINE	
1	12	TR039	TRANSFORMER	
3	11	SCBP0440BN4	SCREW, MACHINE	
1	10	TE104-1	TERMINAL LOCKING	
6	9	NTH0440BN8	NUT, HEX	
7	8	LWE04MRN	WASHER, LOCK, EXTERNAL	
4	7	SCBP0440BN8	SCREW, MACHINE	
1	6	UG58*/U	RECEPTACLE	
1	5	GA149-5	GASKET	
2	4	GA137-1	GASKET, NEOPRENE	
1	3	A883	SPARK ROD SUB-ASS'Y	
1	2	MS791	PLATE, TRANSFORMER MTG	
1	1	PM390	CASE	

REQ'D. R. HAY		PART NUMBER		DESCRIPTION		SYMBOL	
MATERIAL				THE TECHNICAL MATERIEL CORP. MAMARONECK, NEW YORK			
FINISH				TITLE FINAL ASSEMBLY DAC-13			
UNLESS OTHERWISE SPECIFIED DIMENSIONS ARE IN INCHES AND INCLUDE CHEMICALLY APPLIED OR PLATED FINISHES		DRAWN A. MARINO		DATE 6/10/64		FINAL APPROVAL	
CHECKED @		DATE 6-15-64		DATE		DATE	
ELECT. DES.		DATE		MECH. DES.		DATE	
TOLERANCES		± 1/64 ANGLES ± 0° 30'		DATE 6/15/64		SHEET 1 OF 2	
DECIMALS .X ± .05 .XX ± .01 .XXX ± .005		FRACTIONS ± 1/64 ANGLES ± 0° 30'		A3674-B		REV. LTR.	

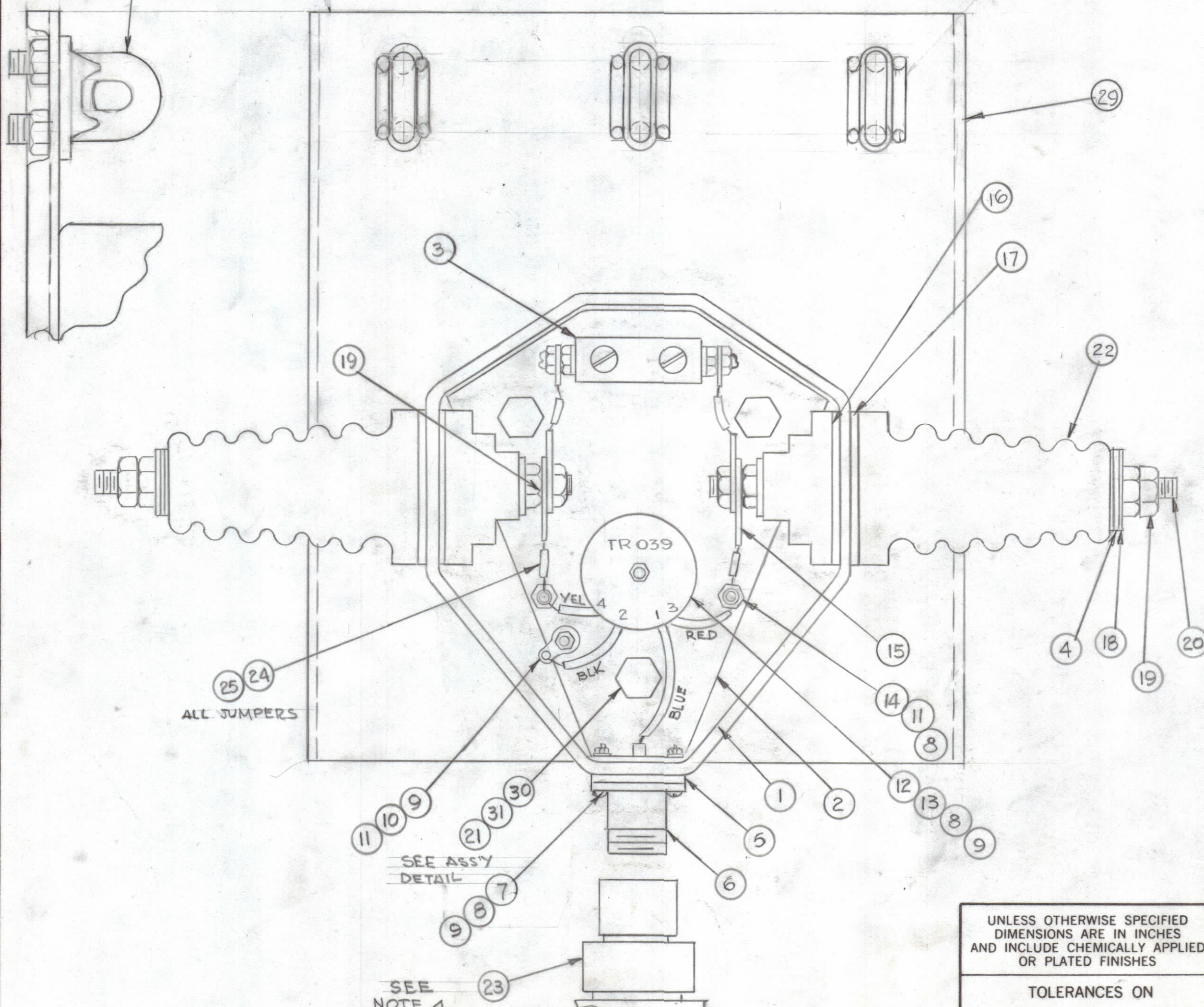
NOTES

A3674
 B

REVISIONS							
ZONE	LTR	DESCRIPTION	DATE	E.M.N.NO	DRAFT	CHKD	APPD
	B	SHEET 2 ADD. SHEET 1 OBSOLETE	6-21-90			GDL	



TO39 ELECTRICAL SPECIFICATIONS
 200Ω BALANCED
 50Ω UNBALANCED
 2-30 MC.



QTY.	ITEM	PART NO.	DESCRIPTION	SYMBOL
3	32	CU 179	WIRE ROPE CLAMPS	
6	31	LWS25MRN	LOCK WASHER	
3	30	SCHW2520BN16	SCREW, MACHINE, SPLIT	
1	29	MS 7234	PLATE MTG. CASE	
1	28	PM 231	COVER	
X	27	BS 100	SOLDER, TIN ALLOY	
X	26	GL106	COMPOUND, POTTING	
X	25	WL 100-3	WIRE, BUSS BAR	
X	24	PX 104-1-066	INSULATION, SLEEVING	
1	23	PL206	ADAPTER (LOOSE ITEM)	
2	22	NS 107	INSULATOR, FEED-THRU	
6	21	NTH 2520BN14	NUT, HEX	
2	20	P/O NS 107	INSULATOR STUD	
8	19	P/O NS 107	NUT, HEX	
4	18	P/O NS 107	WASHER, FLAT	
2	17	GA 115	GASKET, NEOPRENE	
2	16	P/O NS 107	GASKET, CORK	
4	15	TE 132	TERMINAL, LUG	
2	14	TE 102-2	TERMINAL, TURRET	
1	13	SCBP0440BN12	SCREW, MACHINE	
1	12	TR039	TRANSFORMER	
3	11	SCBP0440BN4	SCREW, MACHINE	
1	10	TE 104-1	TERMINAL LOCKING	
6	9	NTH0440BN8	NUT, HEX	
7	8	LWEO4MRN	WASHER, LOCK, EXTERNAL	
4	7	SCBP0440BN0	SCREW, MACHINE	
1	6	UG 58*/U	RECEPTACLE	
1	5	GA149-5	GASKET	
2	4	GA137-1	GASKET, NEOPRENE	
1	3	A883	SPARK ROD SUB ASSY	
1	2	MS 791	PLATE, TRANSFORMER MTG	
1	1	PM 390	CASE	

SEE ASSY DETAIL

SEE NOTE 4

UNLESS OTHERWISE SPECIFIED DIMENSIONS ARE IN INCHES AND INCLUDE CHEMICALLY APPLIED OR PLATED FINISHES

TOLERANCES ON

DECIMALS	FRACTIONS
.X ± .05	± 1/64
.XX ± .01	ANGLES
.XXX ± .005	± 0°-30'

QTY / UNIT	MODEL USED ON	ASSY NO.
APPLICATION		
CODE		

NOTICE TO PERSONS RECEIVING THIS DRAWING

THE TECHNICAL MATERIEL CORPORATION claims proprietary right in the material disclosed hereon. This drawing is issued in confidence for engineering information only and may not be reproduced or used to manufacture anything shown hereon without permission from THE TECHNICAL MATERIEL CORPORATION to the user. This drawing is loaned for mutual assistance and is subject to recall at any time.

QTY. REQ.	ITEM	PART NO.	DESCRIPTION	SYMBOL
LIST OF MATERIAL				
FINAL APPROVAL		DATE		
MECH. DES.		DATE		
ELECT. DES.		DATE		
CHECKED		DATE		
DRAWN		DATE		
G.D.L.		6-21-90		
THE TECHNICAL MATERIEL CORP. MAMARONECK, NEW YORK				
FINAL ASSEMBLY DAC-13				
SIZE	CODE IDENT.NO.	DWG NO.	ISSUE	
C	82679	A 3674-2		
SCALE				SHEET 2 OF 2