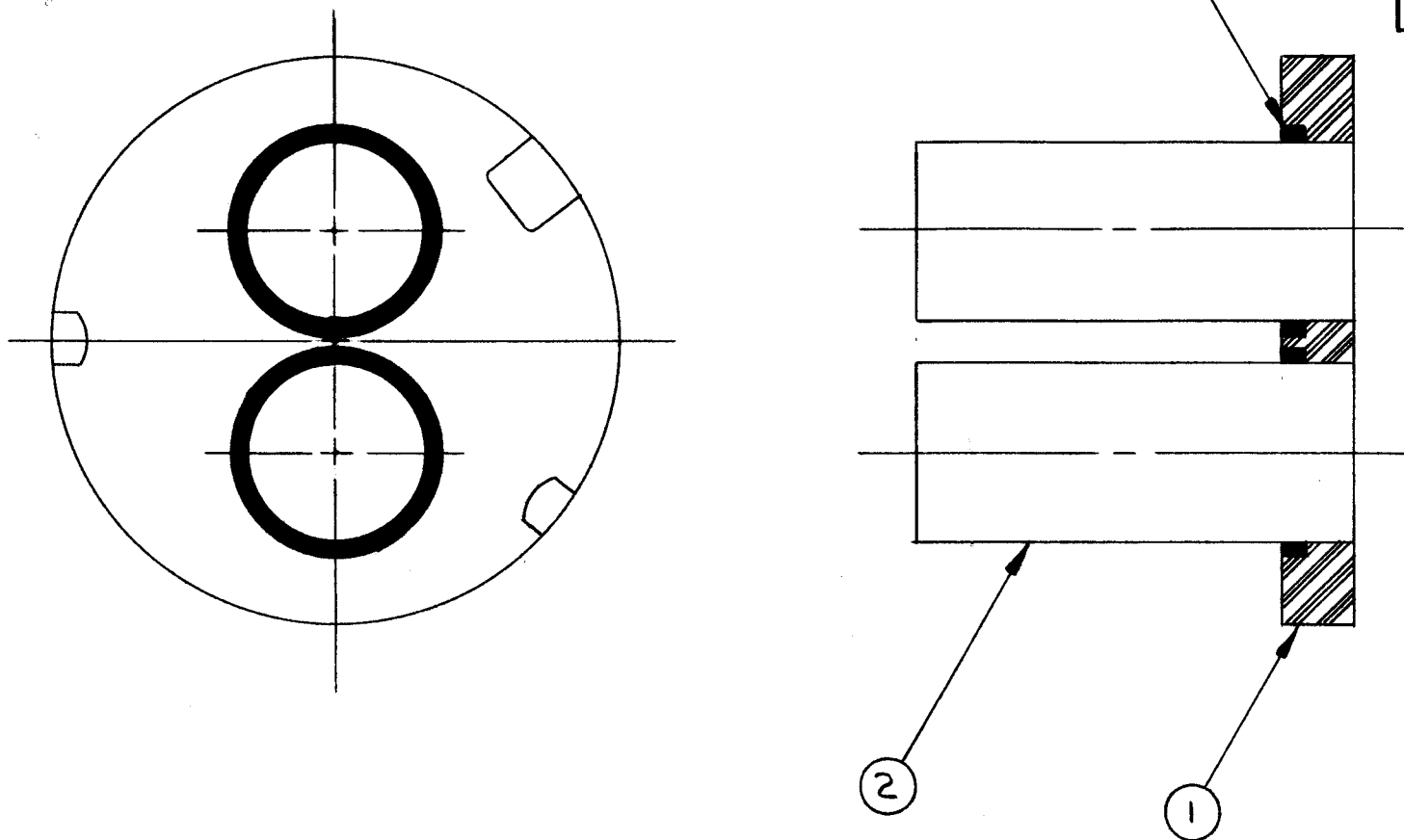


A36490

REVISIONS

SYM	DESCRIPTION	DATE	E.M.N. NO.	DRAFT	CHKD	APPD
X	EXPERIMENTAL RELEASE	5/13/64		JL		
O	ORIGINAL RELEASE FOR PRODUCTION	7.9.64		JTB		



NOTES :-

1- PLACE ITEM ② INTO ITEM ① & POUR EPOXY ITEM ③ IN COUNTERBORED AREA AROUND ITEM ② AS SHOWN.

REQ'D.	ITEM	PART NUMBER	DESCRIPTION	SYMBOL
X	3	GL 125	EPOXY, ADHESIVE	
2	2	CI-112-4C-2R362-M	CORE, FERRITE	
1	1	PX 846	SUPPORT, CORE	

M. GELLMAN		LIST OF MATERIAL	
MATERIAL		THE TECHNICAL MATERIEL CORP. MAMARONECK, NEW YORK	
FINISH		TITLE CORE SUPPORT ASSEMBLY	
UNLESS OTHERWISE SPECIFIED DIMENSIONS ARE IN INCHES AND INCLUDE CHEMICALLY APPLIED OR PLATED FINISHES		DRAWN J. LESHINSKI	DATE 4/29/64
DECIMALS .X ± .05 .XX ± .01 .XXX ± .005		CHECKED @	DATE 7-8-64
FRACTIONS ± 1/64 ANGLES ± 0° 30'		ELECT. DES. MECH. DES.	DATE 7-8-64
TOLERANCES		FINAL APPROVAL A36490	
		DATE	
		SHEET	
		REV. LTR.	

1	PAL-1K	
Q'TY./UNIT	MODEL USED ON	ASS'Y. NO.
SCALE 1:1	CODE	

THE CONTENTS OF THIS DRAWING ARE THE EXCLUSIVE PROPERTY OF THE TECHNICAL MATERIEL CORP. ITS UNAUTHORIZED USE OR REPRODUCTION IN WHOLE OR IN PART IS STRICTLY FORBIDDEN.

NOTES