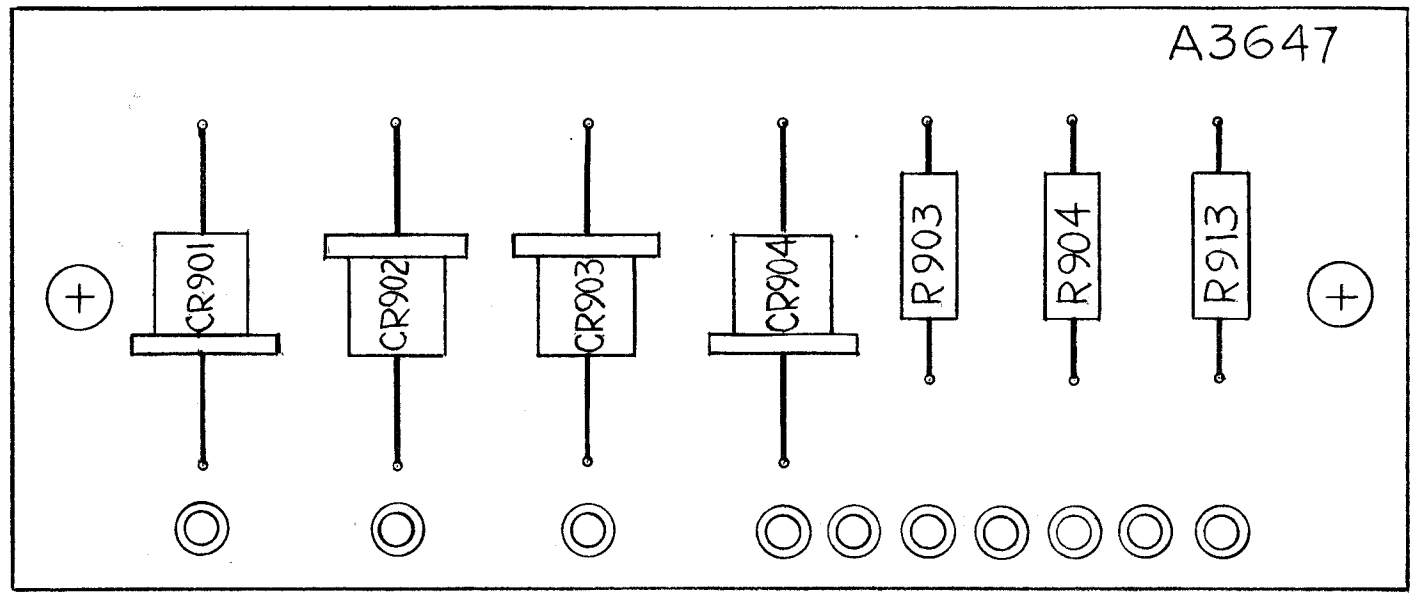


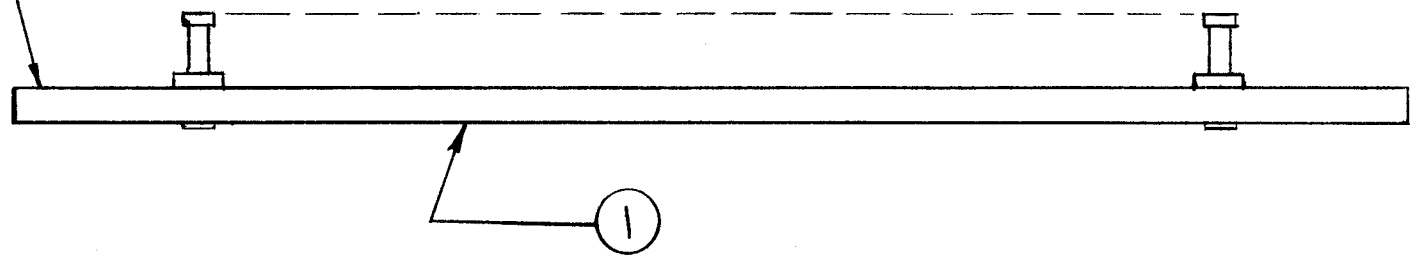
A
A3647

REVISIONS

SYM	DESCRIPTION	DATE	E.M.N. NO.	DRAFT	CHKD	APPD
X	EXPER. RELEASE	5-26-64	#	QBY		
O	ORIGINAL RELEASE FOR PRODUCTION	5-27-64	0	WB	@	JRC
A	IT. 2 DELETED; IT. 1 WAS PC116; IT. 4 WAS RC20GF103J	7-22-64	11743	SRG	@	

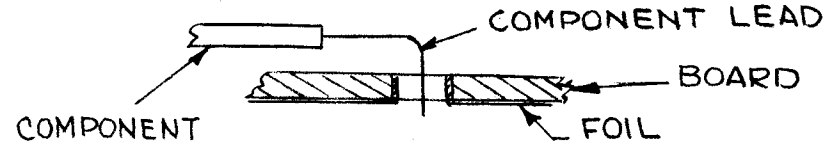


LETTERING ON THIS SIDE



ASSEMBLY NOTICE

1. TO MOUNT COMPONENTS INSERT LEAD THROUGH PLATED THRU HOLES AND BEND ABOUT 1/16 OF LEAD OVER COPPER FOIL AS SHOWN.
2. APPLY HEAT AND SOLDER TO LEAD AND FOIL - CAUTION- TOO MUCH HEAT WILL CAUSE THE FOIL TO SEPARATE FROM THE BOARD.
3. CLEAN AND INSPECT PER TMC SPEC S-676.
4. FUNGUS PROOFING FOR TMC SPEC. S113



NOTES

1	TTR-10	A
Q'TY./UNIT	MODEL USED ON	ASS'Y. NO.
SCALE 2:1	CODE A	
THE CONTENTS OF THIS DRAWING ARE THE EXCLUSIVE PROPERTY OF THE TECHNICAL MATERIEL CORP. ITS UNAUTHORIZED USE OR REPRODUCTION IN WHOLE OR IN PART IS STRICTLY FORBIDDEN.		

CR901
CR902
CR903
CR904

REQ'D.	ITEM	PART NUMBER	DESCRIPTION	SYMBOL
X	6	BS 100	SOLDER, SOFT	
1	5	RC20GF823J	RESISTOR, FIXED, COMPOSITION	R913
2	4	RC20GF153J	RESISTOR, FIXED, COMPOSITION	R903 R904
4	3	IN547	DIODE	
	2	DELETED		
1	1	PC116-3	PRINTED CIRCUIT BOARD	

T. AALTONEN		LIST OF MATERIAL	
MATERIAL	THE TECHNICAL MATERIEL CORP. MAMARONECK, NEW YORK		
FINISH	H.V, RECTIFIER BOARD, ASSY		
UNLESS OTHERWISE SPECIFIED DIMENSIONS ARE IN INCHES AND INCLUDE CHEMICALLY APPLIED OR PLATED FINISHES	DRAWN G.D.L	DATE 5-26-64	FINAL APPROVAL
DECIMALS .X ± .05 .XX ± .01 .XXX ± .005	CHECKED @	DATE 5-27-64	DATE
FRACTIONS ± 1/64 ANGLES ± 0° 30'	ELECT. DES. JRC	DATE	A-3647
TOLERANCES	MECH. DES.	DATE	A
			SHEET
			REV. LTR.