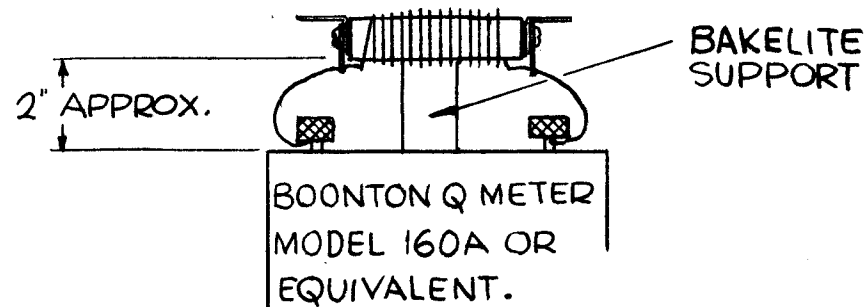
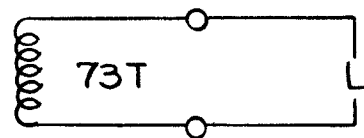


**FABRICATION**

- 1~ WIND 70 TURNS OF ITEM 5 AROUND ITEM 1 STARTING 5/8 FROM END.
- 2~ STAKE WIRE TO INSULATOR BODY WITH ITEM 8. AND SOLDER ENDS TO ITEM 4.
- 3~ COAT WINDING WITH ITEM 7 INSULEX.
- 4~ BAKE FOR 1 HR AT 250° F.
- 5~ ALLOW IT TO COOL.
- 6~ TEST AS SHOWN.

**TEST DATA -**

- L - 35  $\mu$ hy  $\pm$  3  $\mu$ hy
- Q - 180 OR GREATER
- F - 2.5 mc.



**NOTES**

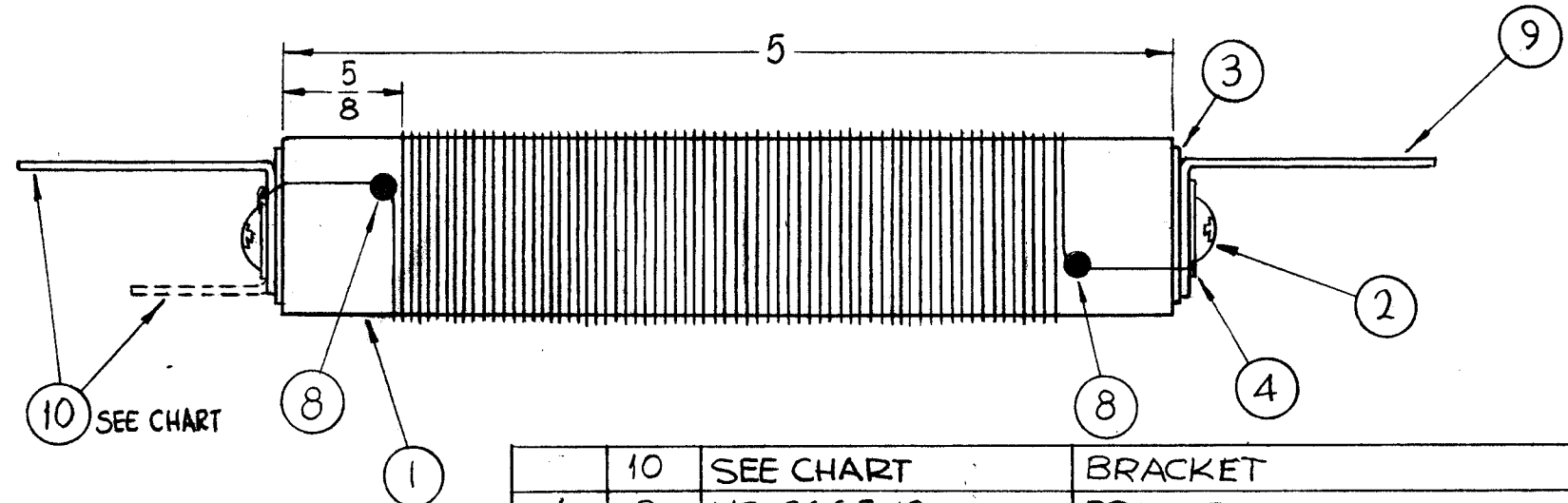
TMC NO.	ITEM 10	REQ.	USED ON
A-3465-1	MS-2665-18	1	CL-338
A-3465-2	MS-2665-19 SHOWN DOTTED	1	CL-339

GPT-200K (AX-395)		A-3258
Q'TY./UNIT	MODEL USED ON	ASS'Y. NO.
SCALE 1"=1"	CODE A	

THE CONTENTS OF THIS DRAWING ARE THE EXCLUSIVE PROPERTY OF THE TECHNICAL MATERIEL CORP. ITS UNAUTHORIZED USE OR REPRODUCTION IN WHOLE OR IN PART IS STRICTLY FORBIDDEN.

A-3465 0

REVISIONS						
SYM	DESCRIPTION	DATE	E.M.N. NO.	DRAFT	CHKD	APPD
0	ORIGINAL RELEASE FOR PRODUCTION	5-5-64		SRG		



REQ'D.	ITEM	PART NUMBER	DESCRIPTION	SYMBOL
	10	SEE CHART	BRACKET	
	1	9 MS-2665-18	BRACKET	
X	8	GL 125	CEMENT, EPOXY	
X	7	GL104-2	INSULEX, U-85	
X	6	BS100	SOLDER, SOFT	
X	5	WI 125-2	WIRE, MAGNET, CEROC "T"	
2	4	TE 104-5	TERMINAL LOCKING	
2	3	WA 109-55	WASHER FIBER	
2	2	SCBP2520BN8	SCREW, MACHINE	
1	1	NS3W0440	INSULATOR, PILLAR, ROUND	

F. BUDETTI LIST OF MATERIAL

MATERIAL: THE TECHNICAL MATERIEL CORP. MAMARONECK, NEW YORK

FINISH: TITLE: STATIC CHOKE ASS'Y

UNLESS OTHERWISE SPECIFIED DIMENSIONS ARE IN INCHES AND INCLUDE CHEMICALLY APPLIED OR PLATED FINISHES

DECIMALS .X $\pm$ .05 .XX $\pm$ .01 .XXX $\pm$ .005	TOLERANCES	FRACTIONS $\pm$ 1/64 ANGLES $\pm$ 0° 30'
--	------------	---

DRAWN SRG	DATE 4-21-64	FINAL APPROVAL	DATE
CHECKED aa	DATE		
ELECT. DES. ab	DATE 4/21/64	A-3465	
MECH. DES. AC	DATE 4/21/64	SHEET	REV. LTR. 0