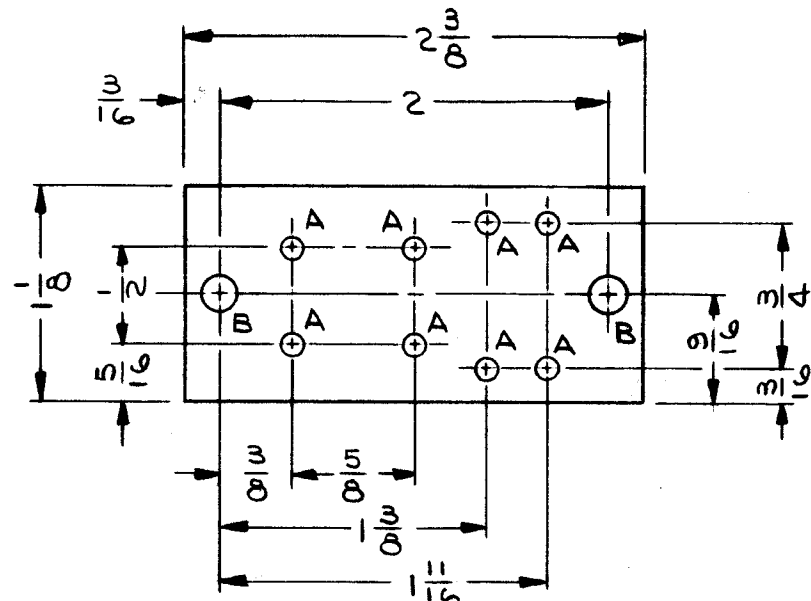
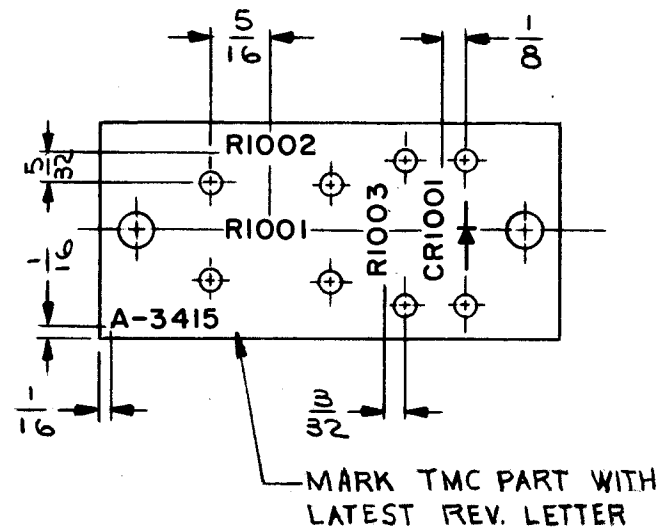


HOLE LEGEND		
HOLE	DESCRIPTION	REQ'D
A	.116 DIA.	8
B	.191 DIA.	2



MATERIAL: 1/8 THICK, PHENOLIC, XXXP, NATURAL SEMI-GLOSS
MACHINING (A 3415-1)

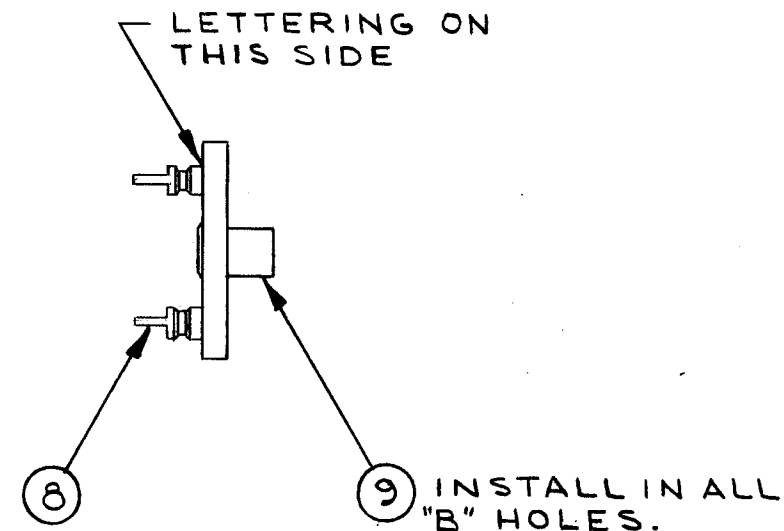
~ UNLESS OTHERWISE SPECIFIED ~
1-ALL LETTERING TO BE 3/32 HIGH BLACK GOTHIC.
2-MARKING PROCESS: USE TMC SPEC. S-727.
3-ALL LETTERING & SYMBOLS TO BE LOCATED AS SHOWN.



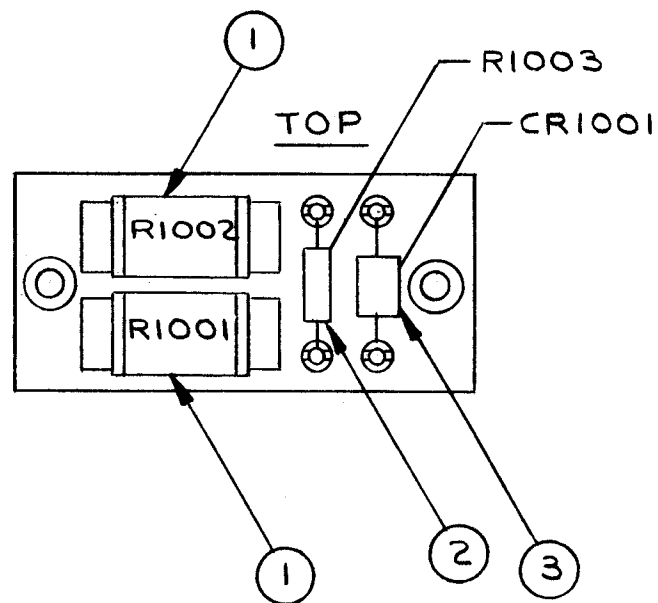
MARK TMC PART WITH LATEST REV. LETTER
MARKING (A 3415-2)

A 3415

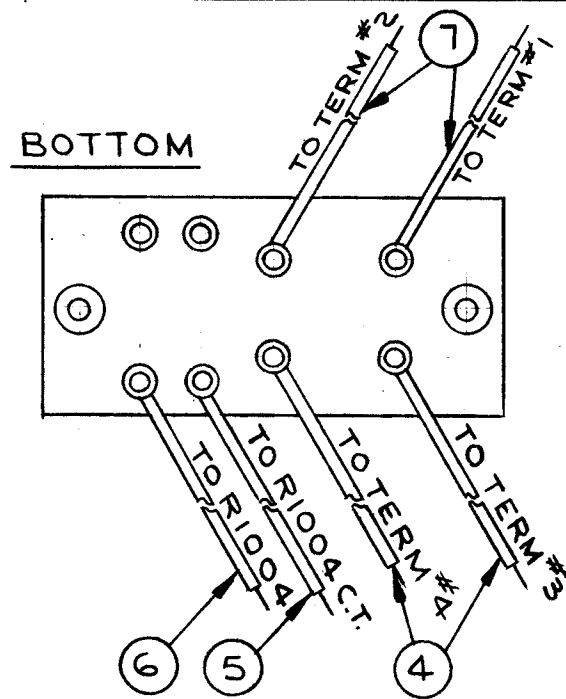
REVISIONS					
SYM	DESCRIPTION	DATE	E.M.N. NO.	DRAFT	CHKD APPD
X1	REVISED MAT. LIST. ITEMS 7 & 8, ADDED ITEM 9.	2/5/64	1	JL	
X2	ITEM 1 WAS RW124, RES., FIXED, WIRE WOUND	6/9/64	X2	A.M.	@ JPK
Ø	ORIGINAL RELEASE FOR PRODUCTION	10-29-64	Ø	Q.F.	



SUB-ASSY (A-3415-3)



ELECTRICAL ASSY (A 3415-4)



1	BPS(-)1	
Q'TY./UNIT	MODEL USED ON	ASS'Y. NO.
SCALE 1:1	CODE A	

THE CONTENTS OF THIS DRAWING ARE THE EXCLUSIVE PROPERTY OF THE TECHNICAL MATERIEL CORP. ITS UNAUTHORIZED USE OR REPRODUCTION IN WHOLE OR IN PART IS STRICTLY FORBIDDEN.

REQ'D.	ITEM	PART NUMBER	DESCRIPTION	SYMBOL
X	10	BS100	SOLDER, TIN ALLOY	
2	9	TE 108-3	NUT, PLANE, CLINCH	B
8	8	TE 109-3	TERMINAL, STUD	A
8"EA.	7	MWC16(19)U92	WIRE, ELECTRICAL	WHT/RD
5"	6	MWC20(7)U3	WIRE, ELECTRICAL	ORANGE
5"	5	MWC20(7)U6	WIRE, ELECTRICAL	BLUE
8"EA	4	MWC16(19)U2	WIRE, ELECTRICAL	RED
1	3	IN3027B	DIODE, ZENER	CR1001
1	2	RC20GF392K	RESISTOR, FIXED, COMPOSITION	R1003
2	1	RW124	RESISTOR ASSY	R1001 R1002

GELLMAN LIST OF MATERIAL

MATERIAL # _____
FINISH # _____
TITLE THE TECHNICAL MATERIEL CORP. MAMARONECK, NEW YORK

UNLESS OTHERWISE SPECIFIED DIMENSIONS ARE IN INCHES AND INCLUDE CHEMICALLY APPLIED OR PLATED FINISHES

DECIMALS .X ± .05 .XX ± .01 .XXX ± .005	TOLERANCES	FRACTIONS ± 1/64 ANGLES ± 0° 30'	DRAWN J. LESHINSKI	DATE 1/6/64	FINAL APPROVAL [Signature]	DATE
			CHECKED @ [Signature]	DATE 10-19-64		
			ELECT. DES. [Signature]	DATE 10/19/64	A 3415	Ø
			MECH. DES. [Signature]	DATE 10-21-64	SHEET	REV. LTR.

NOTES