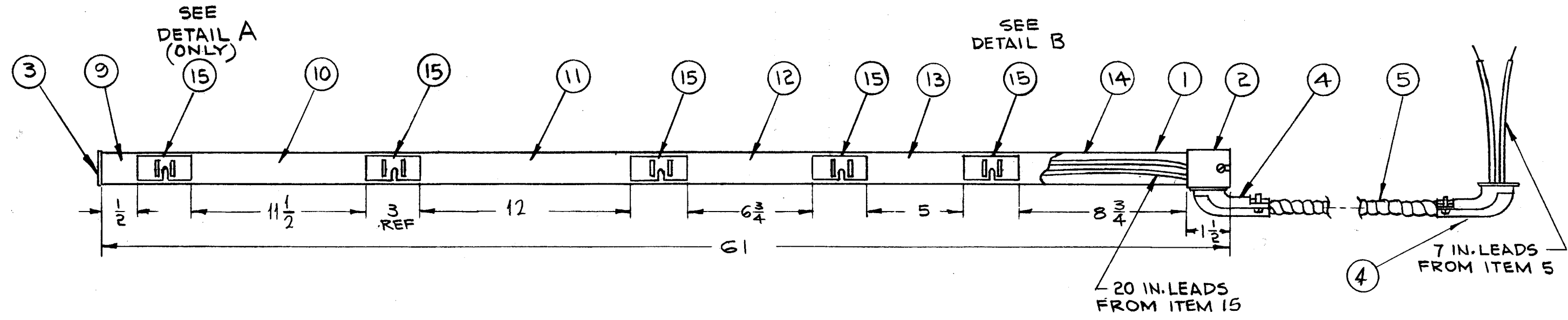
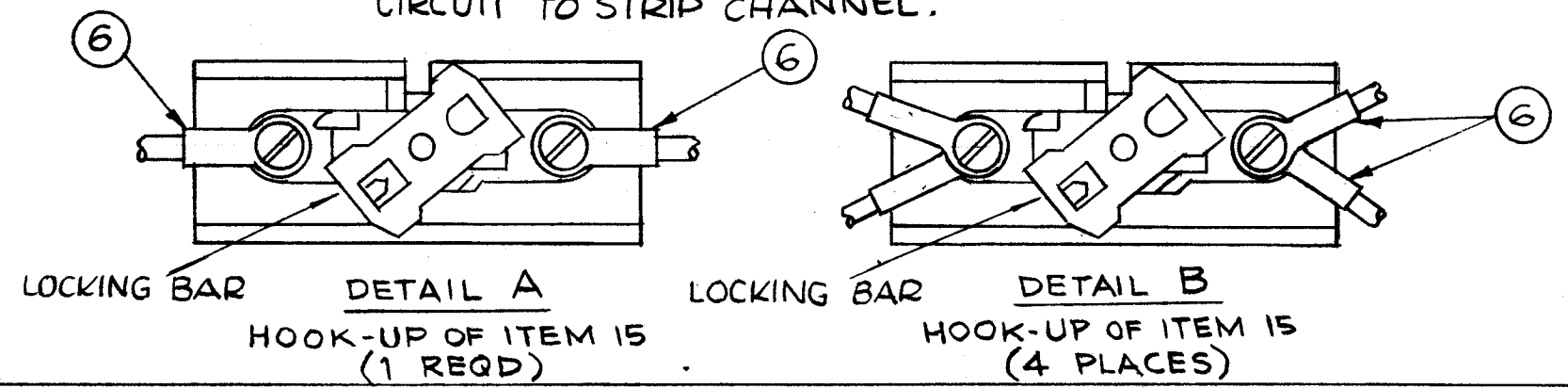


| REVISIONS |                                 |         |            |       |      |      |
|-----------|---------------------------------|---------|------------|-------|------|------|
| SYM       | DESCRIPTION                     | DATE    | E.M.N. NO. | DRAFT | CHKD | APPD |
| Ø         | ORIGINAL RELEASE FOR PRODUCTION | 8.27.64 | +          | MB    |      |      |



NOTE: ROTATE LOCKING BAR TO COMPLETE GROUND CIRCUIT TO STRIP CHANNEL.

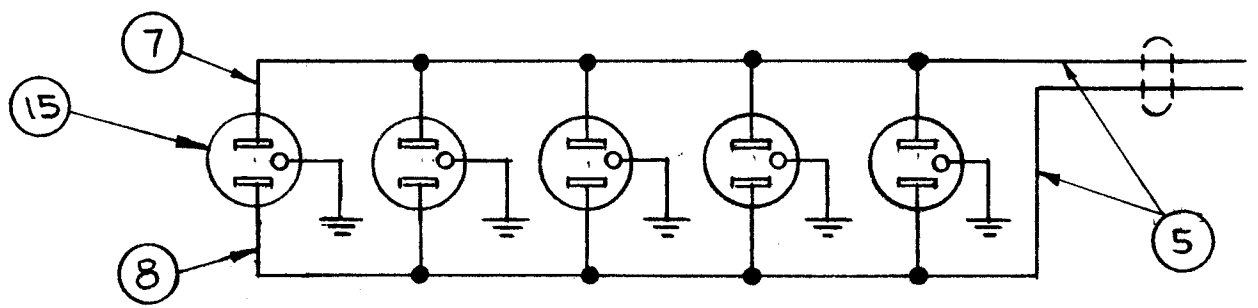


REF: AX-476

| REQ'D. | ITEM | PART NUMBER  | DESCRIPTION                     | SYMBOL |
|--------|------|--------------|---------------------------------|--------|
| 5      | 15   | JJ 294-1     | RECEPTACLE, GROUNDING           |        |
| 1      | 14   | PO 163-8.750 | COVER, CONNECTOR, STRIP         |        |
| 1      | 13   | 5.000        |                                 |        |
| 1      | 12   | 6.750        |                                 |        |
| 1      | 11   | 12.000       |                                 |        |
| 1      | 10   | 11.500       |                                 |        |
| 1      | 9    | PO 163-0.500 | COVER, CONNECTOR, STRIP         |        |
| X      | 8    | MWC 12(19)U0 | WIRE, ELECTRICAL, INSULATED     | BLK    |
| X      | 7    | MWC 12(19)U9 | WIRE, ELECTRICAL, INSULATED     | WHT    |
| 18     | 6    | TE-155-34168 | TERMINAL, LUG, CRIMP, INSULATED |        |
| 1      | 5    | CA 795-4     | CABLE ASSEMBLY, BX              |        |
| 2      | 4    | CU 119       | CONNECTOR, ARMORED CABLE        |        |
| 1      | 3    | PO 161       | FITTING, END, BLANK             |        |
| 1      | 2    | PO 162       | FITTING, END, CABLE ENTRY       |        |
| 1      | 1    | MS-3663      | CHANNEL, STRIP, A.C.            |        |

| STURMER   |  | LIST OF MATERIAL                                     |          |                |  |
|---|--|--|----------|----------------|--|
| MATERIAL  |  | THE TECHNICAL MATERIEL CORP.<br>MAMARONECK, NEW YORK |          |                |  |
| FINISH  |  | TITLE<br>STRIP ASSEMBLY<br>A.C. POWER, RAK-33A       |          |                |  |
| UNLESS OTHERWISE SPECIFIED<br>DIMENSIONS ARE IN INCHES AND INCLUDE<br>CHEMICALLY APPLIED OR PLATED FINISHES |  | DRAWN  | DATE     | FINAL APPROVAL |  |
| DECIMALS<br>.X ± .05<br>.XX ± .01<br>.XXX ± .005  |  | Y02  | 12-30-63 | [Signature]    |  |
| TOLERANCES  |  | CHECKED  | DATE     | DATE           |  |
| FRACTIONS<br>± 1/64<br>ANGLES<br>± 0° 30'   |  | [Signature]  | 8-29-64  | 8-28-64        |  |
|   |  | ELECT. DES.  | DATE     | SHEET          |  |
|   |  | [Signature]  | 8-28-64  | A 3414         |  |
|   |  | MECH. DES.   | DATE     | REV. LTR.      |  |
|   |  | [Signature]  | 8-28-64  | Ø              |  |

SCHMATIC DIAGRAM



NOTES

|   |               |            |
|---|---------------|------------|
| RAK-33A   |               |            |
| Q'TY./UNIT  | MODEL USED ON | ASS'Y. NO. |
| SCALE<br>NONE   | CODE<br>A     |            |
| THE CONTENTS OF THIS DRAWING ARE THE EXCLUSIVE PROPERTY OF THE TECHNICAL MATERIEL CORP. ITS UNAUTHORIZED USE OR REPRODUCTION IN WHOLE OR IN PART IS STRICTLY FORBIDDEN. |               |            |