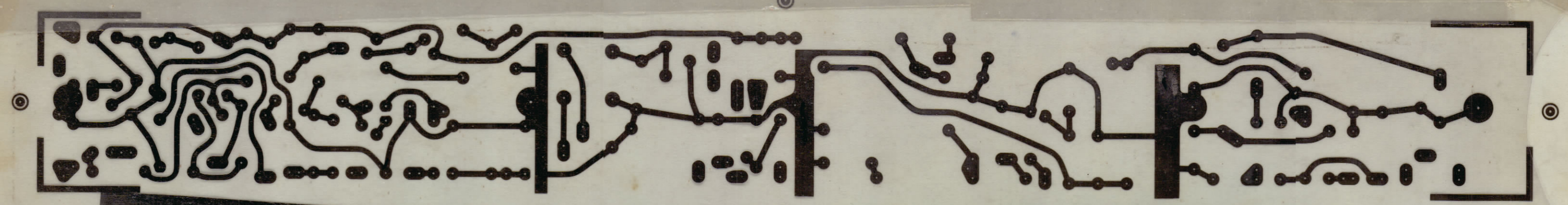


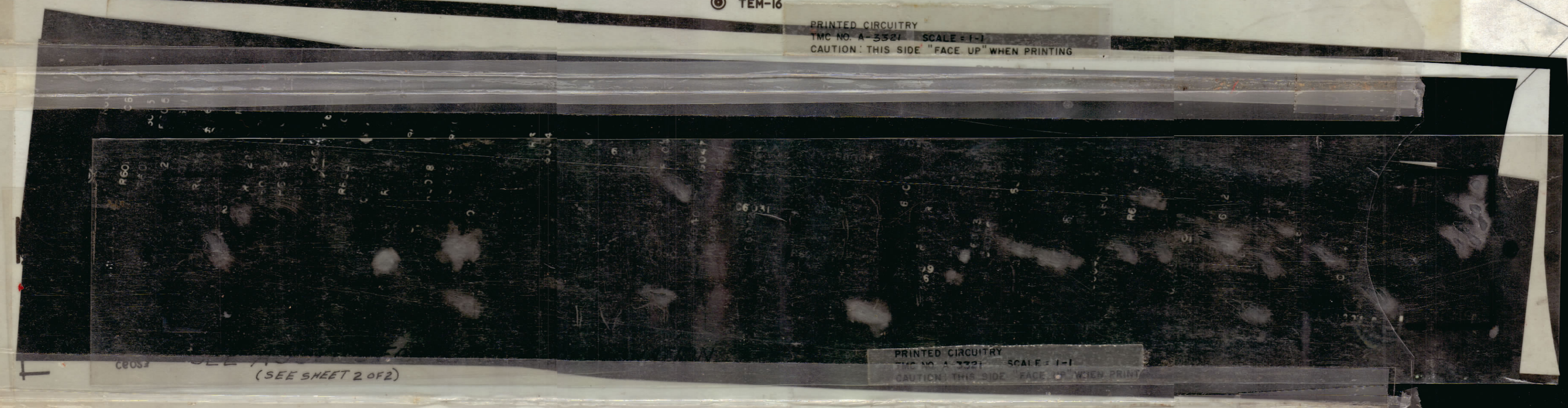
REVISIONS						
ZONE	SYM	DESCRIPTION	DATE	E.M.N. NO.	DRAFT	CHKD APPD
#	0	ORIGINAL RELEASE FOR PRODUCTION	4/14/64	0	A.M.	
#	A	SEE SHEET 2 OF 2, REVISION "A"	8-6-64	11718	PLM	W. J. J. J.
#	B	NOTES COMPLETELY REVISED	1/6/65	14497	PLM	W. J. J. J.
#	C	SEE SHEET 2 OF 2	3-4-66	15905	G.D.L.	W. J. J. J.



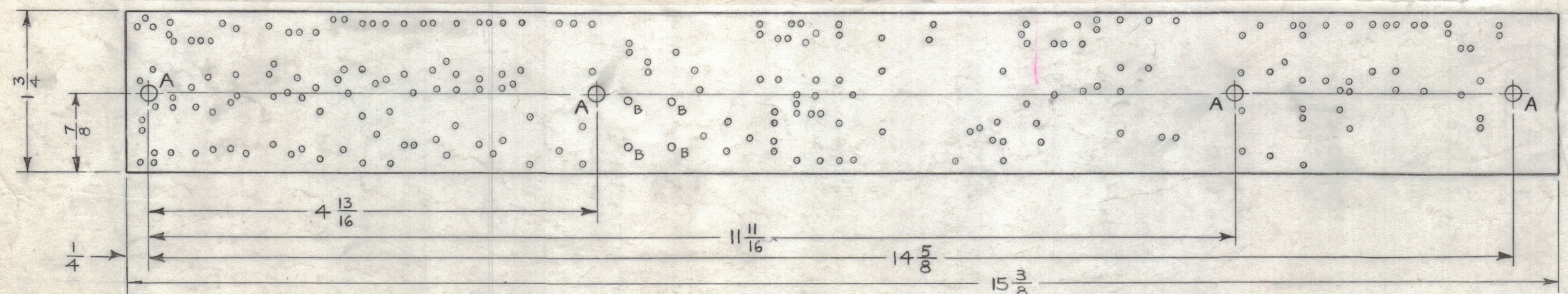
TEM-16

PRINTED CIRCUITRY
TMC NO. A-3321 SCALE 1-1
CAUTION: THIS SIDE "FACE UP" WHEN PRINTING

ORIGINAL ARTWORK TO BE REMOVED FROM PROTECTIVE POCKET WHEN PHOTOGRAPHING (A-3321-1)



PRINTED CIRCUITRY
TMC NO. A-3321 SCALE 1-1
CAUTION: THIS SIDE "FACE UP" WHEN PRINTING



MACHINING (A-3321-2)

HOLE & PAD SPECIFICATIONS			
HOLE	DIA	PAD DIA	REQ'D
UNMARKED	.050	.130	224
A	.189	.312	4
B	.063	.130	4

NOTES: MANUFACTURED IN ACCORDANCE WITH TMC SPEC. S-735, UNLESS OTHERWISE SPECIFIED.

- OVERALL MATERIAL THICKNESS .062 ± .0062 AS PER (PP3.1,3.2).
- CONDUCTIVE PATTERN TO BE COPPER FOIL AS PER (PP4.1).
- PLATING TO BE TIN-LEAD AS PER (PP13.2.2) (13.2.1). IF A PAD APPEARS ON THE PRINTED CIRCUIT SIDE A SIMILAR SIZE & SHAPE SHALL APPEAR ON THE COMPONENT SIDE TO BE MARKED AS PER S-727 (FOR MARKING A3321-3). THIS IS A SINGLE SIDED BOARD.
- (A) ALL HOLES EXCEPT VIA HITS HOLES ARE TO BE PLATED-THRU WITH MINIMUM COPPER PLATING THICKNESS OF .0015.
- (B) PLATE .0003 TO .0003 NICKEL & 25 MILLIONTHS MINIMUM OF GOLD ALL STCHED SURFACES & PLATED-THRU HOLES.
- CONDUCTOR WIDTH: .045 MIN, .062 MAX. SPACE BETWEEN CONDUCTOR .031 MIN.

ORIGINAL ARTWORK TO BE SUPPLIED BY TMC FOR PHOTOGRAPHING (SCALE 1-1)

REQ'D.	ITEM	PART NUMBER	DESCRIPTION	SYMBOL
AALTONEN LIST OF MATERIAL				
MATERIAL		SEE NOTE 1	THE TECHNICAL MATERIEL CORP. MAMARONECK, NEW YORK	
FINISH		SEE NOTE 1	TITLE PRINTED CIRCUIT BOARD ASSY.	
QTY./UNIT		MODEL USED ON	ASS'Y. NO.	
SCALE		CODE		
1		MCG-1	A	
UNLESS OTHERWISE SPECIFIED DIMENSIONS ARE IN INCHES AND INCLUDE CHEMICALLY APPLIED OR PLATED FINISHES		DRAWN: N. Peters DATE: 1-6-64		
DECIMALS ± .05		CHECKED: A. Turner DATE: 2-18-64		
FRACTIONS ± 1/64		ELECT. DES. DATE: 2/19/64		
TOLERANCES ANGLES ± 0° 30'		MECH. DES. DATE: 2/19/64		
		FINAL APPROVAL: [Signature] DATE: 4/20/64		
		A-3321 C		
		SHEET 1 OF 2		
		REV. LTR.		

NOTES

THE CONTENTS OF THIS DRAWING ARE THE EXCLUSIVE PROPERTY OF THE TECHNICAL MATERIEL CORP. ITS UNAUTHORIZED USE OR REPRODUCTION IN WHOLE OR IN PART IS STRICTLY FORBIDDEN.

A-3321 C

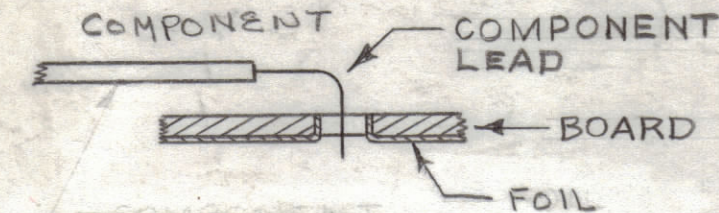
REVISIONS							
ZONE	SYM	DESCRIPTION	DATE	E.M.N. NO.	DRAFT	CHKD	APPD
#	X1	R6024 WAS RC20GF225J	3/24/64		TR		THA
#	X2	TMC S113 ADDED	4-14-64	X2	A.M.		
#	O	ORIGINAL RELEASE FOR PRODUCTION	4/24/64	O	A.M.		
G2	A	IT (43) WAS RC20GF824J	8-6-64	11718			
#	B	IT WAS CN112-105K2	11/6/65	14497			
#	C	ON ITEM 14 SYMBOL L6003 WAS L6002	3/4-66	15905			

ASSEMBLY NOTICE

1- TO MOUNT COMPONENTS INSERT LEAD THROUGH PLATED-THRU HOLES & BEND ABOUT 1/16 OF LEAD OVER COPPER FOIL AS SHOWN.

2- APPLY HEAT & SOLDER TO LEAD & FOIL - CAUTION- TOO MUCH HEAT WILL CAUSE FOIL TO SEPARATE FROM BOARD.

3- CLEAN & INSPECT PER SPEC S-676.



4. FUNGUS PROOFING PER TMC SPECIFICATION S-113

- R6016, R6040, R6046
- R6042, R6043, R6044
- R6034, R6062
- R6036, R6029, R6004, R6015, R6019
- R6006, R6012, R6037, R6064
- R6002, R6008, R6022, R6028, R6032, R6063
- R6035, R6061, R6018
- C6005, C6006
- C6007, C6008, C6009, C6014, C6015, C6016
- C6017, C6019, C6021, C6022, C6027, C6031
- C6032, C6041, C6042, C6045, C6018
- C6020, C6028, C6029

ELECTRICAL ASS'Y (A-3321-5)

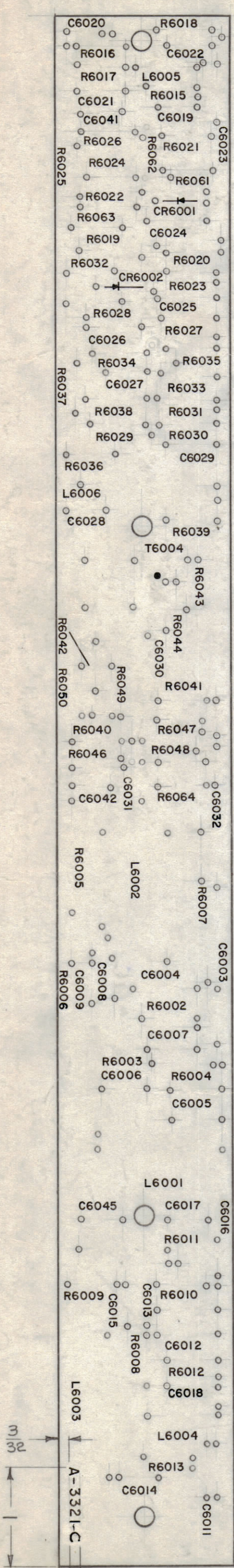
REQ'D.	ITEM	PART NUMBER	DESCRIPTION	SYMBOL
1	43	RC20GF394J	RESISTOR, FIXED, COMP.	R6024
—	42	BS-100	SOLDER, SOFT	
4	41	TE-108-2	NUT, SWAGE	
1	40	TZ-172	TRANSFORMER, RF, FIXED	T6004
2	39	RC20GF332J	RESISTOR, FIXED, COMP.	R6023
2	38	823J		R6020
1	37	822J		R6010
2	36	682J		R6003
1	35	681J		R6017
1	34	473J		R6041
3	33	472J		
3	32	470J		
1	31	392J		R6009
2	30	271J		R6049
1	29	225J		R6050
1	28	224J		R6048
5	27	223J		
1	26	222J		R6047
1	25	185J		R6027
1	24	154J		R6038
4	23	153J		
2	22	151J		R6007
2	21	124J		R6013
2	20	123J		R6026
6	19	104J		R6039
3	18	RC20GF102J		R6031
2	17	RC42GF472J	RESISTOR, FIXED, COMP.	R6005
2	16	IN463	DIODE	R6011
1	15	CL140-8	COIL, RF	CR6001
2	14	CL101-3	COIL, RF	CR6002
1	13	CL226-5	COIL, RF	L6004
1	12	CL275-473	COIL, RF	L6001
1	11	CL101-4	COIL, RF	L6003
19	10	CC100-32	CAPACITOR, FIXED, DISC	L6006
3	9	CC100-24	CAPACITOR, FIXED, DISC	L6005
1	8	CN112A105K2	CAPACITOR, FIXED, MYLAR	L6002
2	7	CM15B470J	CAPACITOR, FIXED, MICA	C6030
1	6	050M		C6026
1	5	271J		C6023
2	4	511J		C6024
1	3	221J		C6025
1	2	241J		C6004
1	1	CM15B100J	CAPACITOR, FIXED, MICA	C6003
				C6013
				C6012
				C6011

AALTONEN LIST OF MATERIAL			
MATERIAL	FINISH	TITLE	SYMBOL
		THE TECHNICAL MATERIEL CORP. MAMARONECK, NEW YORK	
		PRINTED CIRCUIT BOARD ASS'Y	
UNLESS OTHERWISE SPECIFIED DIMENSIONS ARE IN INCHES AND INCLUDE CHEMICALLY APPLIED OR PLATED FINISHES	DRAWN 4. Senev	DATE 10-16-63	FINAL APPROVAL RJC
DECIMALS .X ± .05 .XX ± .01 .XXX ± .005	CHECKED G. Turan	DATE 2-19-64	DATE 4/26/64
TOLERANCES ± 1/64 ANGLES ± 0° 30'	ELECT. DES. 2/19/64	DATE 2/19/64	DATE 2/19-64
	MECH. DES. 2/19-64	DATE 2/19-64	DATE 2/19-64
		SHEET 2 OF 2	REV. LTR. C

1	MCG-1	
Q'TY./UNIT	MODEL USED ON	ASSY. NO.
SCALE 1:1	CODE A	

THE CONTENTS OF THIS DRAWING ARE THE EXCLUSIVE PROPERTY OF THE TECHNICAL MATERIEL CORP. ITS UNAUTHORIZED USE OR REPRODUCTION IN WHOLE OR IN PART IS STRICTLY FORBIDDEN.

- UNLESS OTHERWISE SPECIFIED -
1- ALL LETTERING TO BE 5/64 HIGH BLACK GOTHIC, LOCATED AS SHOWN. STROKE .010.
2- DOTS TO BE 1/16 DIA.
3- MARKING PROCESS AS PER TMC SPEC S-727.



LETTERING ON THIS SIDE →

MOUNT IN ALL "A" HOLES

SUB-ASS'Y (A-3321-4)

LETTERING (A-3321-3)

NOTES