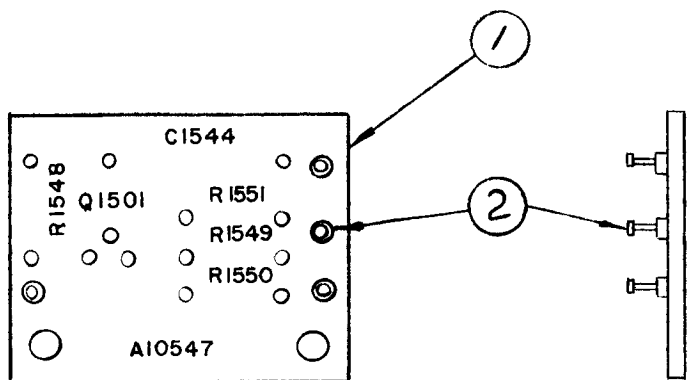


A10547-4

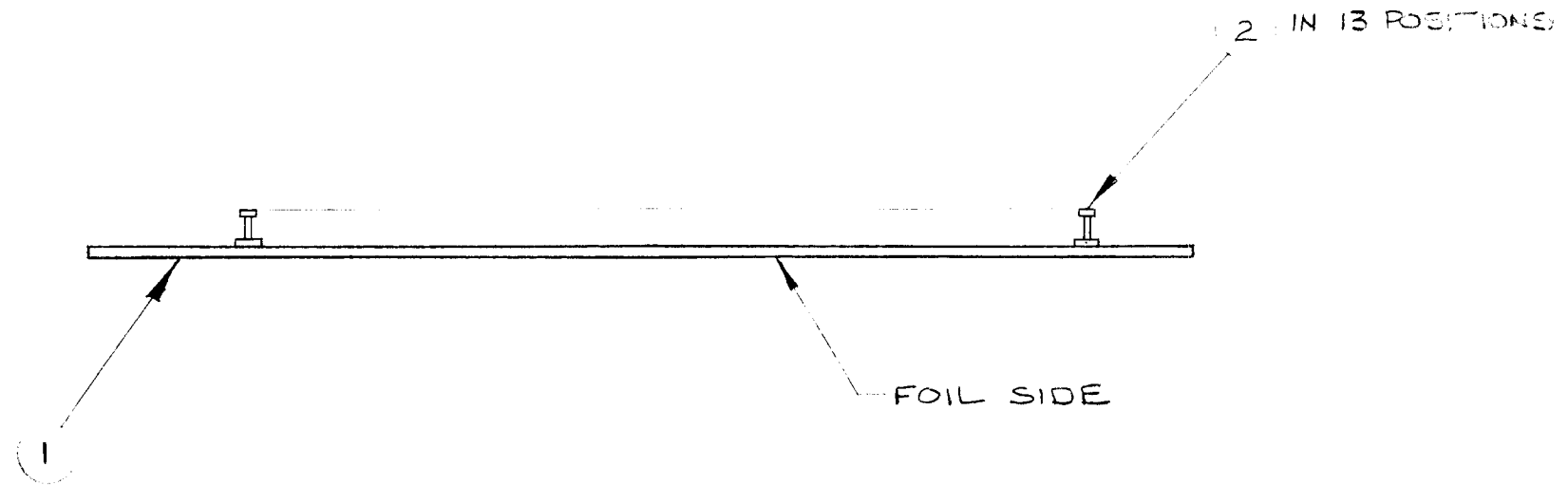
ISSUE	ITEM	CHANGED FROM	DATE	CN. NO.	DRAFTS	CHECKER	ENG. APP.	REQ.	ITEM	PART NO.	DESCRIPTION	SYMBOL
Ø		REL TO PROD	9 DEC 66		RA		<i>[Signature]</i>	1	1	A10547-3	ASS'Y PRE AMP	
								4	2	TE127-3	TERMINAL, STUD	



STE A-1		005/66		A10547-4		8 DEC 66				TMC (Canada) LIMITED OTTAWA ONTARIO			
MODEL	PROJECT NO.	ASS'Y. NO.	DATE	STOCK SIZE									ASS'Y PRE AMP
USED ON										(SUB ASS'Y)			
MAXIMUM ALLOWABLE TOLERANCES HAVE BEEN DETERMINED AND DEVIATIONS WILL BE CAUSE FOR REJECTION. REMOVE ALL BURRS AND SHARP EDGES				IF IT IS FOUND DESIRABLE TO CHANGE ANY TOLERANCE OR OTHER DETAIL SPECIFIED ON THIS DRAWING NOTIFY THE PURCHASER PROMPTLY.				MATERIAL		WEIGHT PER PC.		RA	
								TYPE & TEMPER				DRAWN	
TOLERANCES				SCALE 1:1				HEAT TREAT. SPEC.		<i>[Signature]</i> CHECKED		<i>[Signature]</i> FINAL APPROVAL	
ALL OTHERS		DEC. DIM. ±		DIMENSIONS IN INCHES UNLESS OTHERWISE SPECIFIED				FINISH & SPEC. NO.		SHEET 4 OF 5		A10547-4 Ø	
		FRAG. DIM. ±		DRILL, PUNCH, COMMERCIAL STOCK SIZES AND MANUFACTURERS TOLERANCES ARE NOT INCLUDED.									
		ANGULAR DIM. ±											

A10550-4

ISSUE	ITEM	CHANGED FROM	DATE	CN. NO.	DRAFTS	CHECKER	ENG. APP.	REQ.	ITEM	PART NO.	DESCRIPTION	SYMBOL
Ø		RELEASED TO PROD.	JAN 27/67		RPL			1	1	A10550-3	PC. BOARD (LETTERING)	
								13	2	TE127-2	STUD, TERMINAL	



NOTE:
 ITEMS 2 MOUNTED IN "C" HOLES
 REF: A10550-2

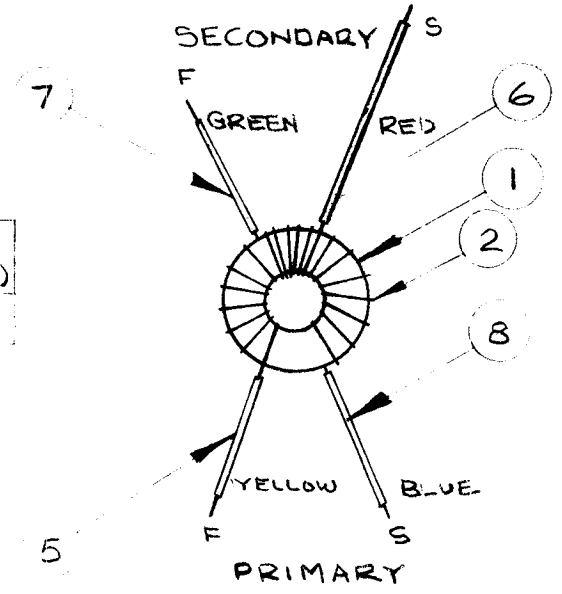
TTR-20		053/67		A10550-5		JAN 19/67				TMC (Canada) LIMITED OTTAWA ONTARIO			
MODEL	PROJECT NO.	ASS'Y. NO.	DATE	STOCK SIZE									PC. BOARD ASS'Y. TRANSMIT I.F.
USED ON										(SUB ASS'Y)			
MAXIMUM ALLOWABLE TOLERANCES HAVE BEEN DETERMINED AND DEVIATIONS WILL BE CAUSE FOR REJECTION. REMOVE ALL BURRS AND SHARP EDGES				IF IT IS FOUND DESIRABLE TO CHANGE ANY TOLERANCE OR OTHER DETAIL SPECIFIED ON THIS DRAWING NOTIFY THE PURCHASER PROMPTLY.				MATERIAL		WEIGHT PER PC.		RPL	
								TYPE & TEMPER				DRAWN	
TOLERANCES				SCALE 1:1				HEAT TREAT. SPEC.		CHECKED		FINAL APPROVAL	
ALL OTHERS		DEC. DIM. ±		DIMENSIONS IN INCHES UNLESS OTHERWISE SPECIFIED				FINISH & SPEC. NO.		SHEET 4 OF 5		A10550-4	
		FRAC. DIM. ±		DRILL. PUNCH. COMMERCIAL STOCK SIZES AND MANUFACTURERS TOLERANCES ARE NOT INCLUDED.									
		ANGULAR DIM. ±										Ø	

A 10575

ISSUE	ITEM	CHANGED FROM	DATE	CN. NO.	DRAFTS	CHECKER	ENG. APP.	REQ.	ITEM	PART NO.	DESCRIPTION	SYMBOL
Ø		RELEASED TO PROD	JAN 24/67		RPL		<i>[Signature]</i>	1	1	CI 127-4	CORE, TORROID	
A		REV. AS PER CEMN NO.	JAN 26/67	CEM N 175	RPL			AR	2	WI 123-34	WIRE	
								AR	3	BS100	SOLDER, SOFT	
								AR	4	GL103	ADHESIVE, Q DOPE	

PRIMARY TURNS	SEC. TURNS	PRIMARY IND.	TEST FREQ	IND. TOLERANCE	Q MIN. UNLOADED	Q TEST FREQ (MHZ)
141	10	108	2.5 MHz	10%	90	2

REQ.	ITEM	PART NO.	DESCRIPTION
1/2"	5	PX 104-2-.022	SLEEVING, INSULATED
1"	6	PX 104-3-.022	
1/2"	7	PX 104-4-.022	
1/2"	8	PX 104-6-.022	SLEEVING, INSULATED

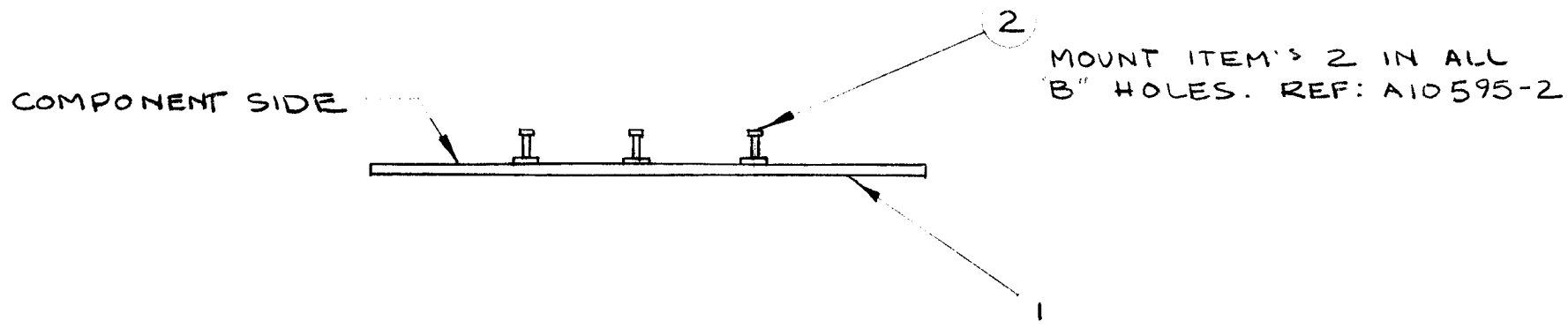


REF: TZ10001

TTR-20		053/67		A10550-5		JAN 19/67				TMC (Canada) LIMITED		OTTAWA ONTARIO	
MODEL		PROJECT NO.		ASS'Y. NO.		DATE		STOCK SIZE		TRANSFORMER R.F.		ASS'Y	
USED ON								MATERIAL		WEIGHT PER PC.		RPL	
MAXIMUM ALLOWABLE TOLERANCES HAVE BEEN DETERMINED AND DEVIATIONS WILL BE CAUSE FOR REJECTION. REMOVE ALL BURRS AND SHARP EDGES				IF IT IS FOUND DESIRABLE TO CHANGE ANY TOLERANCE OR OTHER DETAIL SPECIFIED ON THIS DRAWING NOTIFY THE PURCHASER PROMPTLY.				TYPE & TEMPER		DRAWN		ELEC. DES. APP.	
TOLERANCES				SCALE NTS		HEAT TREAT. SPEC.		CHECKED		FINAL APPROVAL		MECH. DES. APP.	
ALL OTHERS		DEC. DIM. ±		DIMENSIONS IN INCHES UNLESS OTHERWISE SPECIFIED		FINISH & SPEC. NO.		JUTASI		A10575		A	
		FRAC. DIM. ±		DRILL, PUNCH, COMMERCIAL STOCK SIZES AND MANUFACTURERS TOLERANCES ARE NOT INCLUDED.									
		ANGULAR DIM. ±											

A10595-4

ISSUE	ITEM	CHANGED FROM	DATE	CN. NO.	DRAFTS	CHECKER	ENG. APP.	REQ.	ITEM	PART NO.	DESCRIPTION	SYMBOL
Ø		REL TO PROD	14-4-67		RD		<i>[Signature]</i>	1	1	A10595-3	GRID, METERING PC. BOARD (LETTERING)	
A		SEE SHEET 305	SEPT 26, 67		AP		<i>[Signature]</i>	3	2	TE127-2	STUD, TERMINAL	

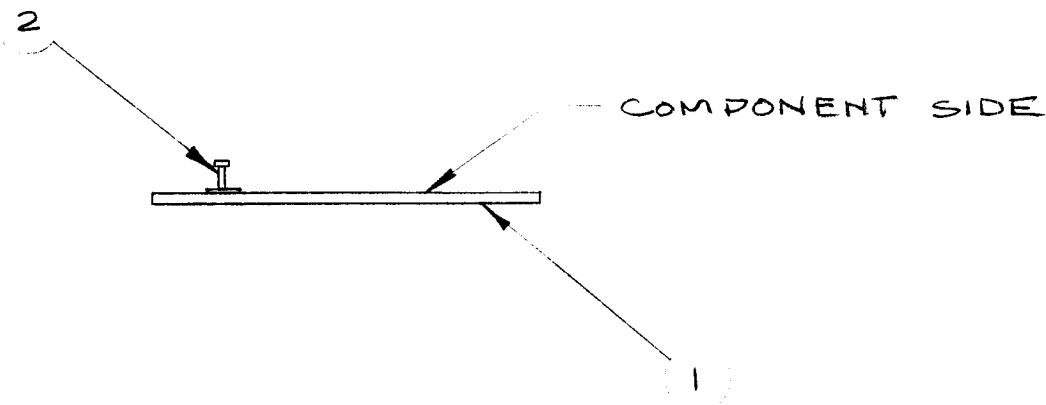


Ax10033		053/67		FEB. 7/67		TMC (Canada) LIMITED OTTAWA ONTARIO											
MODEL	PROJECT NO.	ASS'Y. NO.	DATE	STOCK SIZE													
USED ON				MATERIAL	WEIGHT PER PC.	GRID, METERING PC. BD ASS'Y											
MAXIMUM ALLOWABLE TOLERANCES HAVE BEEN DETERMINED AND DEVIATIONS WILL BE CAUSE FOR REJECTION. REMOVE ALL BURRS AND SHARP EDGES				IF IT IS FOUND DESIRABLE TO CHANGE ANY TOLERANCE OR OTHER DETAIL SPECIFIED ON THIS DRAWING NOTIFY THE PURCHASER PROMPTLY.				SUB ASS'Y									
								TYPE & TEMPER		RPL	<i>[Signature]</i>						
TOLERANCES				SCALE				DRAWN	ELEC. DES. APP.	MECH. DES. APP.							
ALL OTHERS				DIMENSIONS IN INCHES UNLESS OTHERWISE SPECIFIED				HEAT TREAT. SPEC.		FINAL APPROVAL							
								DRILL, PUNCH, COMMERCIAL STOCK SIZES AND MANUFACTURERS TOLERANCES ARE NOT INCLUDED.				FINISH & SPEC. NO.		SHEET 4 OF 5		A10595-4	A
												CHECKED		<i>[Signature]</i>			

A 10596-4

ISSUE	ITEM	CHANGED FROM	DATE	CN. NO.	DRAFTS	CHECKER	ENG. APP.	REQ.	ITEM	PART NO.	DESCRIPTION	SYMBOL
Ø		RELEASED TO PROD	MAR 28/67		RPL			1	1	A10596-3	OUTPUT, METERING PC BD.	
								2	2	TE 127-2	STUD, TERMINAL	

MOUNT ITEM'S 2 IN ALL "B" HOLES
REF. A10596-2

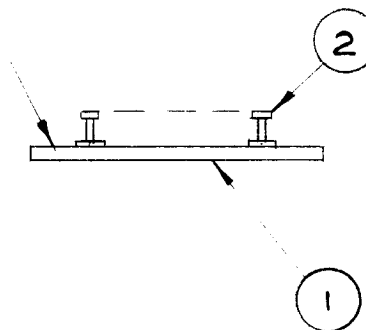


AX10033		053/67		MAR 17/67				TMC (Canada) LIMITED		OTTAWA ONTARIO					
MODEL		PROJECT NO.		ASS'Y. NO.		DATE		STOCK SIZE		OUTPUT, METERING PC BD					
USED ON								ASS'Y. (SUB ASS'Y)							
MAXIMUM ALLOWABLE TOLERANCES HAVE BEEN DETERMINED AND DEVIATIONS WILL BE CAUSE FOR REJECTION. REMOVE ALL BURRS AND SHARP EDGES				IF IT IS FOUND DESIRABLE TO CHANGE ANY TOLERANCE OR OTHER DETAIL SPECIFIED ON THIS DRAWING NOTIFY THE PURCHASER PROMPTLY.				MATERIAL		WEIGHT PER PC.					
								TYPE & TEMPER		RPL					
TOLERANCES				SCALE 1:1				HEAT TREAT. SPEC.		DRAWN		ELEC. DES. APP.		MECH. DES. APP.	
ALL OTHERS		DEC. DIM. ± FRAC. DIM. ± ANGULAR DIM. ±		DIMENSIONS IN INCHES UNLESS OTHERWISE SPECIFIED				FINISH & SPEC. NO.		CHECKED		FINAL APPROVAL			
				DRILL, PUNCH, COMMERCIAL STOCK SIZES AND MANUFACTURERS TOLERANCES ARE NOT INCLUDED.						SHEET 4 OF 5		A10596-4		Ø	

A 10597-4

ISSUE	ITEM	CHANGED FROM	DATE	CN. NO.	DRAFTS	CHECKER	ENG. APP.	REQ.	ITEM	PART NO.	DESCRIPTION	SYMBOL
Ø		REL TO PROD	14-4-67		RD			1	1	A10597-3	PC, BD LETTERING METER CAL.	
A		SEE SHEET 1045	25-9-67		AP			8	2	TE127-2	STUD, TERMINAL	
B		SEE SHEET 1045	25-9-67		AP	W						

COMPONENT SIDE



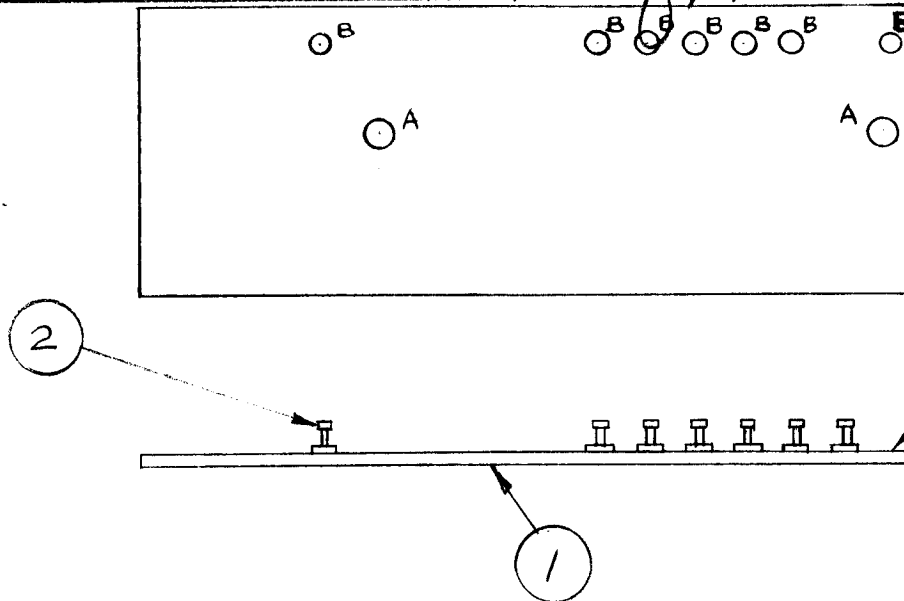
MOUNT ITEMS 2 IN ALL "B" HOLES
REF. A10597-2

AX10033		053/67		A10597-5		FEB. 20/67				TMC (Canada) LIMITED OTTAWA ONTARIO		
MODEL		PROJECT NO.		ASS'Y. NO.		DATE		STOCK SIZE		METER, CAL. P.C. BD ASS'Y		
								MATERIAL		WEIGHT PER PC.		(SUB ASS'Y)
								TYPE & TEMPER		RPL		W
								HEAT TREAT. SPEC.		DRAWN		ELEC. DES. APP.
								FINISH & SPEC. NO.		CHECKED		FINAL APPROVAL
TOLERANCES		SCALE 1:1		DIMENSIONS IN INCHES UNLESS OTHERWISE SPECIFIED						SHEET 4 OF 5		A10597-4
ALL OTHERS		DEC. DIM. ±		DRILL, PUNCH, COMMERCIAL STOCK SIZES AND MANUFACTURERS TOLERANCES ARE NOT INCLUDED.								B
		FRAC. DIM. ±										
		ANGULAR DIM. ±										

ISSUE	ITEM	CHANGED FROM	DATE	CN. NO.	DRAFTS	CHECKER	ENG. APP.	REQ.	ITEM	PART NO.	DESCRIPTION	SYMBOL
Ø		RELEASED TO PROD	APRIL 17/67		RPL	WV	WV	1	1	A10598-3	AUDIO/PREAMP CW OSC. PC. BD.	
A		REV TO CEMN	AUG 10/67	226	AP	WV	WV	7	2	TE127-2	STUD, TERMINAL	
B		REV TO CEMN	AUG 10/67	226	AP	WV	WV					
C		REV TO CEMN	AUG 10/67	274	AP	WV	WV					
D		REV TO CEMN	JAN 30/67	319	AP	WV	WV					
E		REV TO CEMN	8/69	385	AP	WV	WV					

MOUNT ITEM'S 1 IN "B" HOLES SHOWN ONLY

"A" HOLES FOR REF:



COMPONENT SIDE

F	REV TO CEMN	18 Nov 70	854	JR	WV	144
---	-------------	-----------	-----	----	---------------	-----

AX10033		053/67		MAR 7/67		TMC (Canada) LIMITED OTTAWA ONTARIO					
MODEL	PROJECT NO.	ASS'Y. NO.	DATE	STOCK SIZE				AUDIO/PREAMP CW OSC.			
MAXIMUM ALLOWABLE TOLERANCES HAVE BEEN DETERMINED AND DEVIATIONS WILL BE CAUSE FOR REJECTION. REMOVE ALL BURRS AND SHARP EDGES				IF IT IS FOUND DESIRABLE TO CHANGE ANY TOLERANCE OR OTHER DETAIL SPECIFIED ON THIS DRAWING NOTIFY THE PURCHASER PROMPTLY.				PC. BD. ASSY			
								RPL		(4) WV	
TOLERANCES				SCALE NTS				DRAWN			
ALL OTHERS				DIMENSIONS IN INCHES UNLESS OTHERWISE SPECIFIED				ELEC. DES. APP.			
DEC. DIM. ±				DRILL, PUNCH, COMMERCIAL STOCK SIZES AND MANUFACTURERS TOLERANCES ARE NOT INCLUDED.				MECH. DES. APP.			
FRAC. DIM. ±								HEAT TREAT. SPEC.		CHECKED	
ANGULAR DIM. ±								FINISH & SPEC. NO.		FINAL APPROVAL	
SHEET 4 OF 5						A10598-4		F			