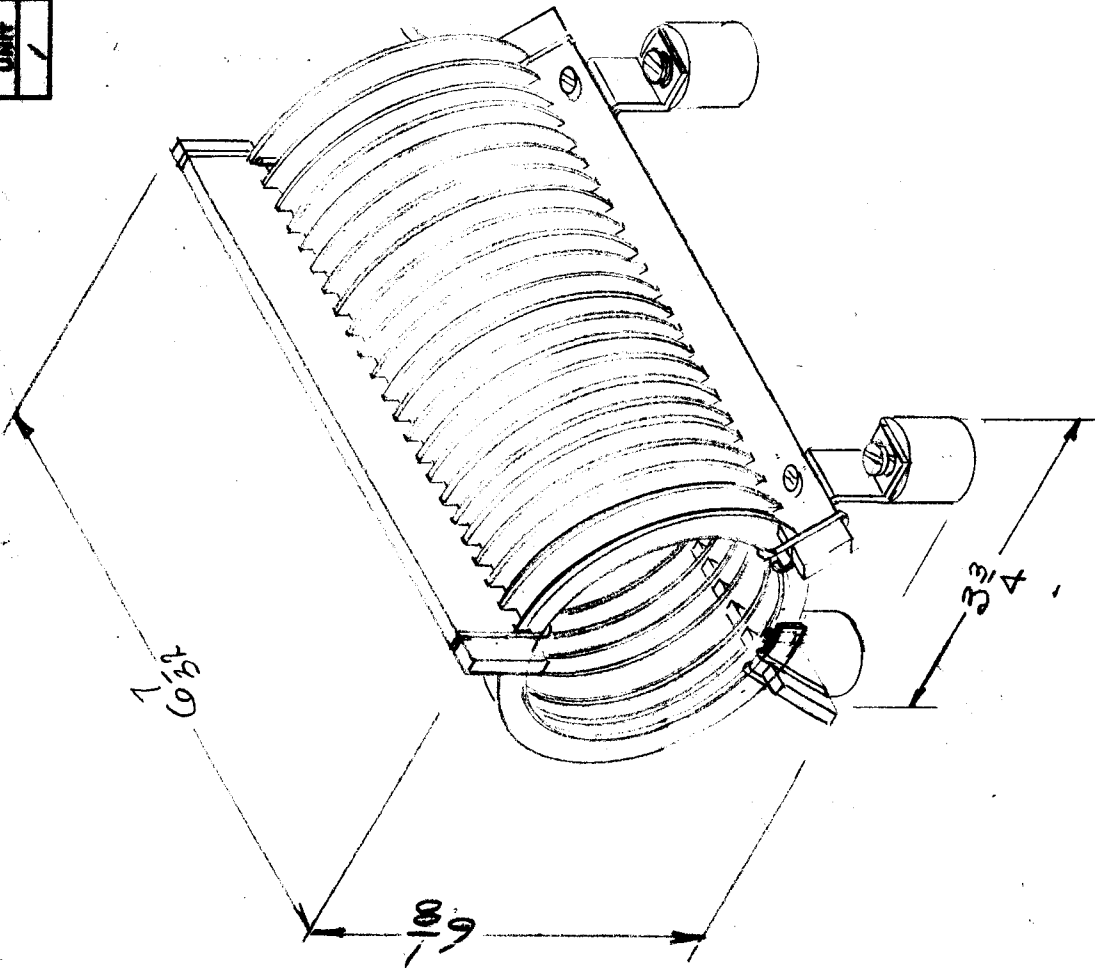


AC-107 B

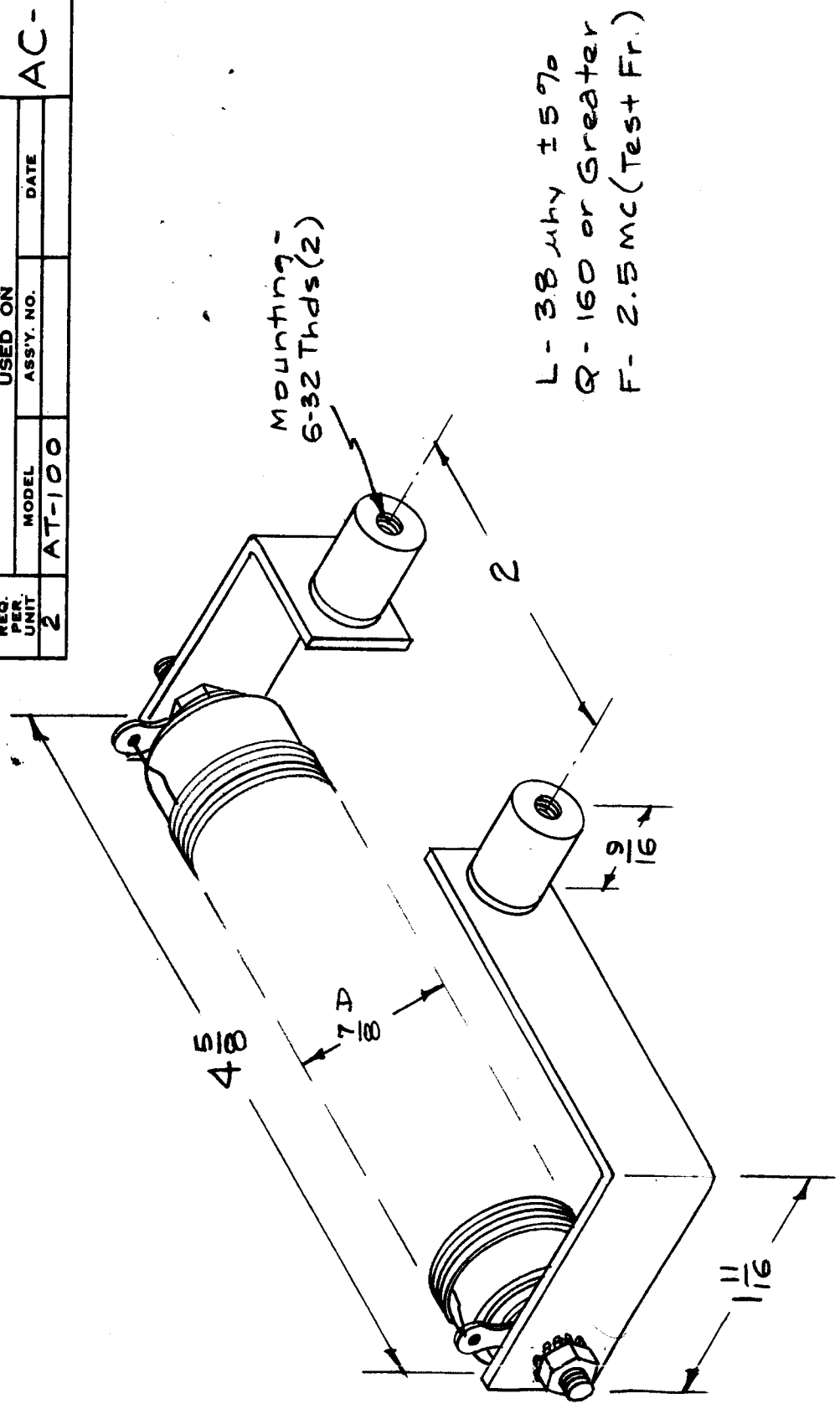
USED ON	DATE
7J-2	7-6-53
MODEL	ASBY. NO.
ATS-2	70
QUANTITY	
1	

ELECTRICAL SPECS
 INDUCTANCE - 20 μ h
 CURRENT - 5 AMPS.



REQ. ITEM	PART NO.	DESCRIPTION	SYMBOL
B	PM272-1 DELETED	THE TECHNICAL MATERIEL CORP. MAMARONECK, NEW YORK	
A	Deleted Lead Straps.	ASSEMBLY, COIL	
ISSUE ITEM	CHANGED FR M	20 μ h	
TOLERANCES			
DEC. DIM. \pm			
FRAC. DIM. \pm			
ANGULAR DIM. \pm			
DATE	CH. NO.	DRAFTS	CHECKER
9.30.66	16953	WHD	AB
10/26/69		W	WHD
SCALE:	1 A-1731		
MAXIMUM ALLOWABLE TOLERANCES HAVE BEEN DETERMINED AND ANY DEVIATIONS WILL BE CAUSE FOR REJECTION. REM VE ALL BURRS AND SHARP EDGES			
TYPE & TEMPER	HEATTREAT. SPEC.	DRAWN	CHECKED
		arc	File
FINISH & SPEC. NO.	ELEC. DES. APP.	MECH. DES. APP.	FINAL APPROVAL
			AC-107 B

REQ. PER UNIT 2		MODEL AT-100		USED ON ASSY. NO.		DATE		AC-105	
--------------------	--	-----------------	--	----------------------	--	------	--	--------	--

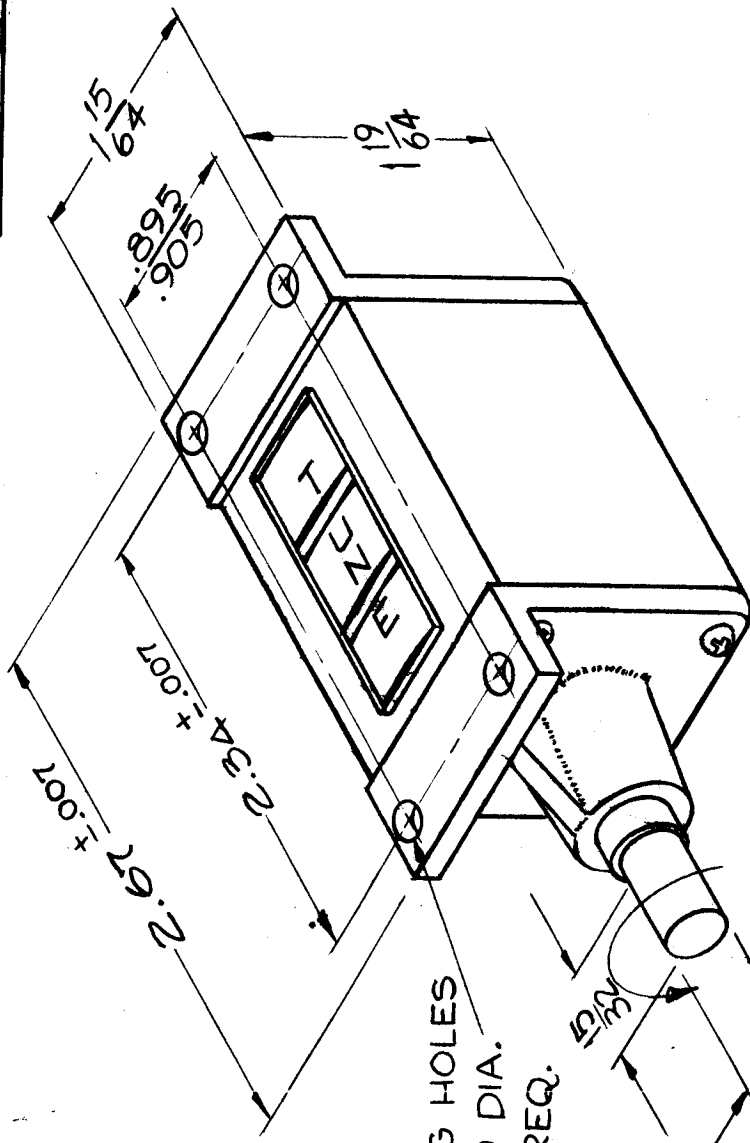


L- 3.8 mhy ± 5%
 Q- 160 or Greater
 F- 2.5 Mc (Test Fr.)

Mounting -
 6-32 Thds (2)

REQ. ITEM		PART NO.		DESCRIPTION		SYMBOL	
				THE TECHNICAL MATERIEL CORP.			
		STOCK SIZE		MAMARONECK, NEW YORK			
		MATERIAL		COIL, RF, FIXED, 3.8 mhy.			
ISSUE ITEM		CHANGED FROM		DATE		CH. NO.	
				SCALE:		1A-1764	
DEC. DIM. ±		All		TOLERANCES		MAXIMUM ALLOWABLE TOLERANCES HAVE BEEN DETERMINED AND ANY DEVIATIONS WILL BE CAUSE FOR REJECTION. REMOVE ALL BURRS AND SHARP EDGES	
FRAC. DIM. ±		Dimensions		DATE		CHECKER	
ANGULAR DIM. ±		Approx.		SCALE:		1A-1764	
				DRAFTS		ENG. APP.	
				CHECKER		1A-1764	
				DRAWN		16 ⁹ /9/59	
				HEATTREAT. SPEC.		CHECKED	
				FINISH & SPEC. NO.		ELEC. DES. APP. MECH. DES. APP.	
				FINAL APPROVAL		AC-105	

REQ. PER UNIT	1	MODEL	AX 209	DATE	1-30-60
USED ON	AC108 B				
ASSY. NO.	GPT 40K				



MTG HOLES
.140 DIA.
4 REQ.

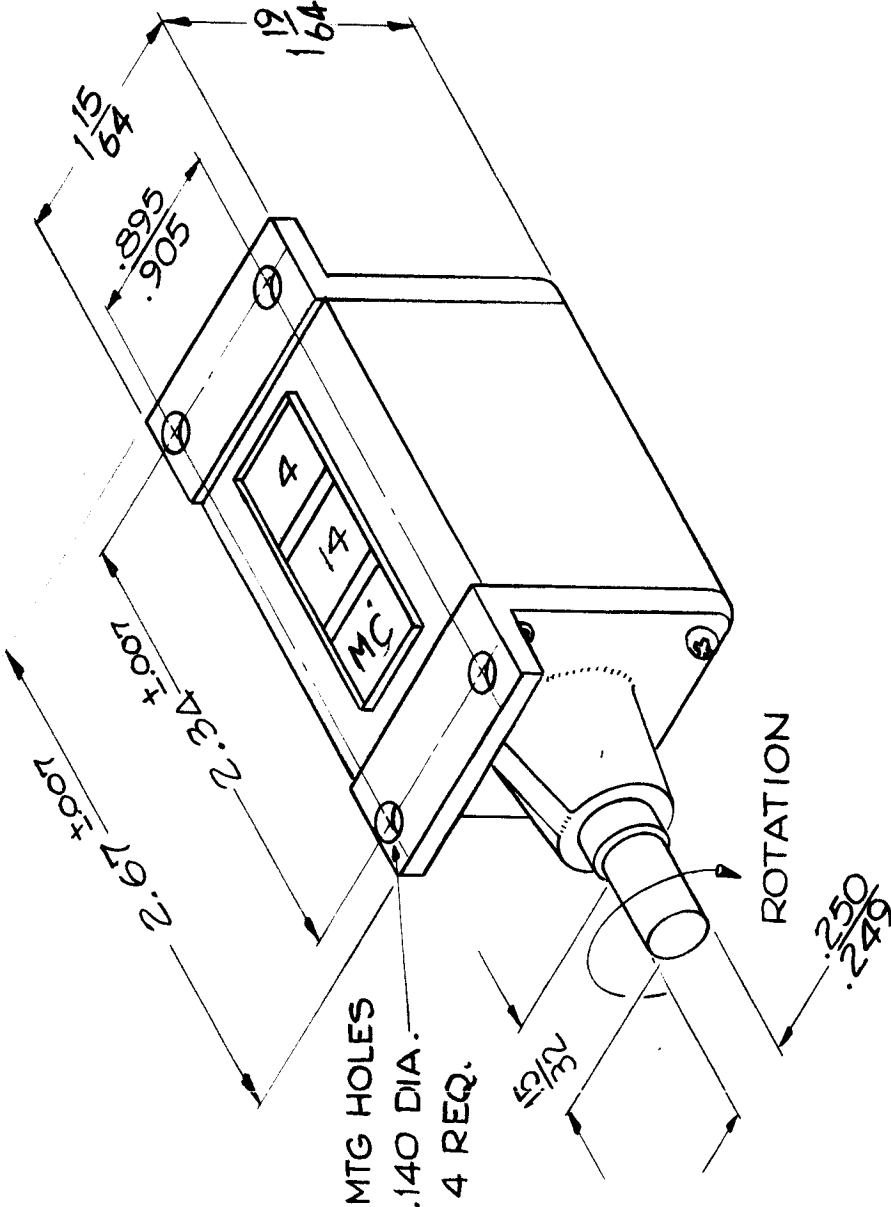
ROTATION - COUNTER-CLOCKWISE

SPECIFICATIONS ~
PLAIN BEARING TYPE
NON RESET
READINGS ~
POSITION 1 ~ TUNE
2 ~ OPER.
3 ~ EMER.

REQ. ITEM	PART NO.	DESCRIPTION	SYMBOL
B		THE TECHNICAL MATERIEL CORP. MAMARONECK, NEW YORK	
A		COUNTER, MODE	
MATERIAL		U.C. Biele	
STOCK SIZE			
TYPE & TEMPER			
HEAT TREAT. SPEC.			
FINISH & SPEC. N.			
DRAWN		J.C. Biele	
CHECKED			
ELEC. DES. APP			
MECH. DES. APP			
FINAL APPROVAL			
		AC108	B

REF WAS	4A-1820	DATE	1-19-67	176%	RME	CHECKER	ENG. APP.
ROTATION WAS	CLOCKWISE	DATE	9-30-64	12490	JTB		
CHANGED FROM		SCALE: A3116-6					
TOLERANCES							
MAXIMUM ALLOWABLE TOLERANCES HAVE BEEN DETERMINED AND ANY DEVIATIONS WILL BE CAUSE FOR REJECTI N. REMOVE ALL BURRS AND SHARP EDGES							
DEC. DIM. ±							
FRAC. DIM. ±							
ANGULAR DIM. ±							

REQ. PER UNIT	1
MODEL	GPT-40K
USED ON	AT-101
ASSY. NO.	AT-101
DATE	2-4-60
AC-110 A	



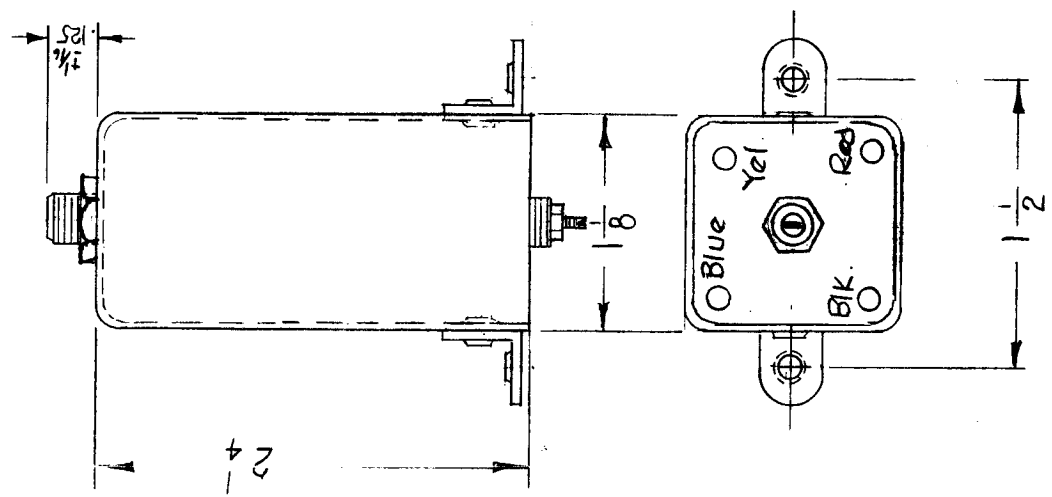
SPECIFICATIONS ~
 PLAIN BEARING TYPE
 NON RESET
 READINGS ~
 POSITION 1 ~ 4 - 14 MC
 2 - BLANK
 3 - 14 - 20 MC
 4 - 20 - 28 MC

REQ. ITEM	PART NO.	DESCRIPTION	SYMBOL
		THE TECHNICAL MATERIEL CORP.	
		MAMARONECK, NEW YORK	
		COUNTER, ANTENNA TUNER	
ISSUE ITEM	DATE	CH. NO.	DRAFTS
A	7/16/60	10	J.C. Biele
TOLERANCES			
SCALE: 4A-1825			
MAXIMUM ALLOWABLE TOLERANCES HAVE BEEN DETERMINED AND ANY DEVIATIONS WILL BE CAUSE FOR REJECTION. REMOVE ALL BURRS AND SHARP EDGES			
DEC. DIM. ±			
FRAC. DIM. ±			
ANGULAR DIM. ±			
TYPE & TEMPER	HEAT TREAT. SPEC.	DRAWN	CHECKED
		J.C. Biele	J.C. Biele
FINISH & SPEC. NO.		ELEC. DES. APP. MECH. DES. APP.	
		AC-110 A	

REQ. PER UNIT	MODEL	USED ON	SYMBOL
1	CHL-1	ASBY. NO.	AC-114
		DATE	B
		4-8-60	

ELECTRICAL SPECIFICATIONS

$L = 280 \mu h \pm 10\%$
 $Q = 80$ OR GREATER
 FREQ = 790 KC

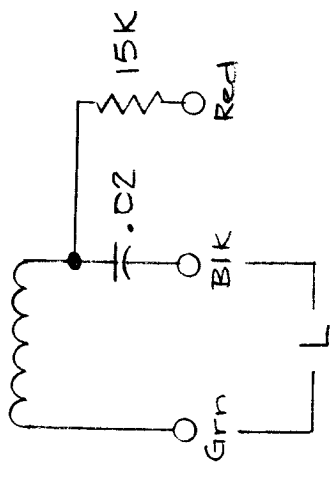
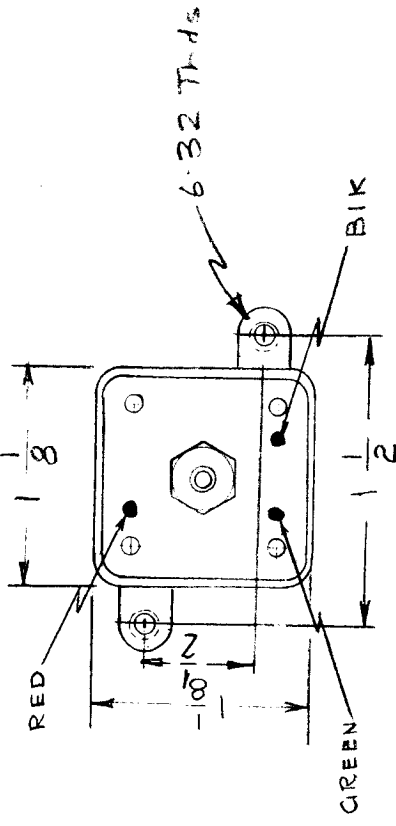
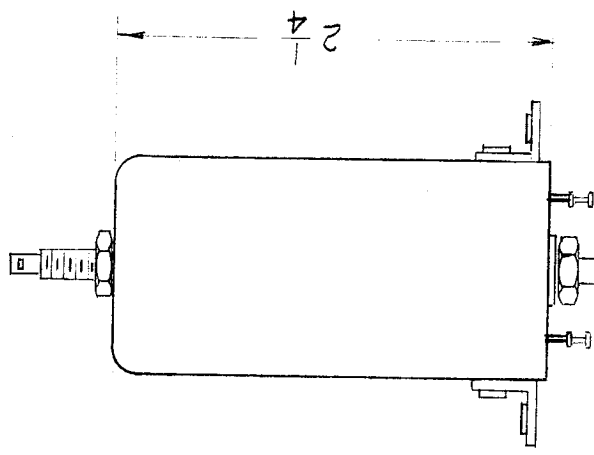


REQ. ITEM	PART NO.	DESCRIPTION	SYMBOL
B 1	10% Tol. added to L	THE TECHNICAL MATERIEL CORP. MAMARONECK, NEW YORK	
A 1	Color Chgs on All Terminals	COIL TUNED	
ISSUE ITEM	CHANGED FROM	500KC AMP	
TOLERANCES			
DEC. DIM. ±			
FRAC. DIM. ±			
ANGULAR DIM. ±			
DATE	CH. NO.	DRAFTS	CHECKER
3-16-61	4442	DJM	J.C.B.
10-17-60	3229	J.C.B.	
DATE	CH. NO.	DRAFTS	CHECKER
			ENG. APP.
SCALE: 2A-1860		MAXIMUM ALLOWABLE TOLERANCES HAVE BEEN DETERMINED AND ANY DEVIATIONS WILL BE CAUSE FOR REJECTION. REMOVE ALL BURRS AND SHARP EDGES	
TYPE & TEMPER.	HEAT TREAT. SPEC.	DRAWN	CHECKED
		MT	JCT
FINISH & SPEC. NO.		ELEC. DES. APP. MECH. DES. APP.	
		AC-114	B

REQ. PER. UNIT	1	USED ON	AC-115	B
MODEL	CMO	ASSY. NO.	AX-224	
		DATE	10.5.1960	

MODEL REQ	1	LOCATIONAL FUNCTION	Y3D7 PLATE COIL	OPER FREQ	2-4 MC	SYM	T304
-----------	---	---------------------	-----------------	-----------	--------	-----	------

$L = 19.4 \mu h \pm 15\%$
 $Q = 40$ or Greater
 Test Fr. = 2.5 Mc



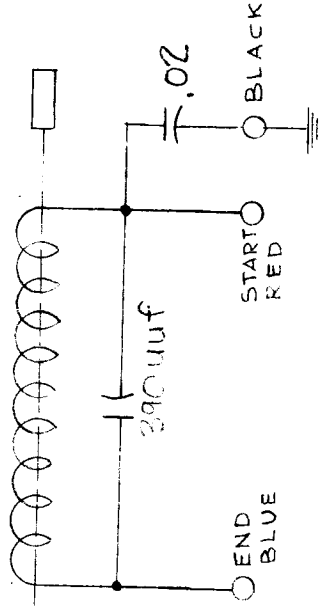
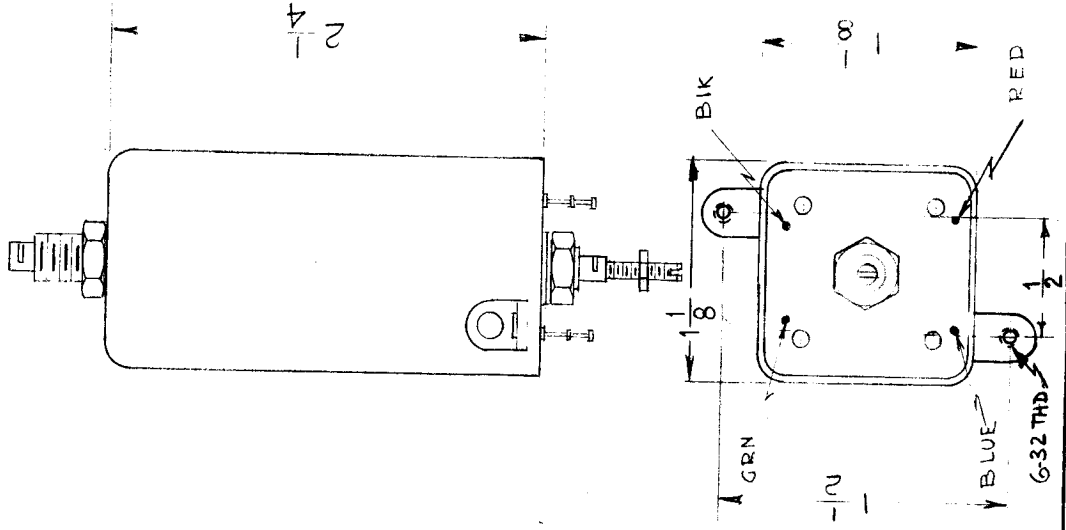
REQ. ITEM	DESCRIPTION	PART NO.	SYMBOL
B 1	I 15% Added to L		
A 1	L WAS 23 UH		
ISSUE ITEM	CHANGED FROM		
TOLERANCES			
DEC. DIM. \pm FRAC. DIM. \pm ANGULAR DIM. \pm			
DATE	CH. NO.	DRAFTS	CHECKER
4/12/61	4642		<i>W. J. COO</i>
12-14-60	3716		<i>MAS. JONES</i>
SCALE:	2A-1865		
MAXIMUM ALLOWABLE TOLERANCES HAVE BEEN DETERMINED AND ANY DEVIATIONS WILL BE CAUSE FOR REJECTION. REMOVE ALL BURRS AND SHARP EDGES			
TYPE & TEMPER	HEAT TREAT. SPEC.	DRAWN	CHECKED
		<i>De Long</i>	
FINISH & SPEC. NO.	ELEC. DES. APP	MECH. DES. APP	
DESCRIPTION		SYMBOL	
THE TECHNICAL MATERIEL CORP.		B	
MAMARONECK, NEW YORK			
COIL, RF, TUNED			

REQ. PER. UNIT	USED ON	
	MODEL	ASSY. N.
1	CMO	AX-224
		DATE
		10-6-1960

AC-116 A

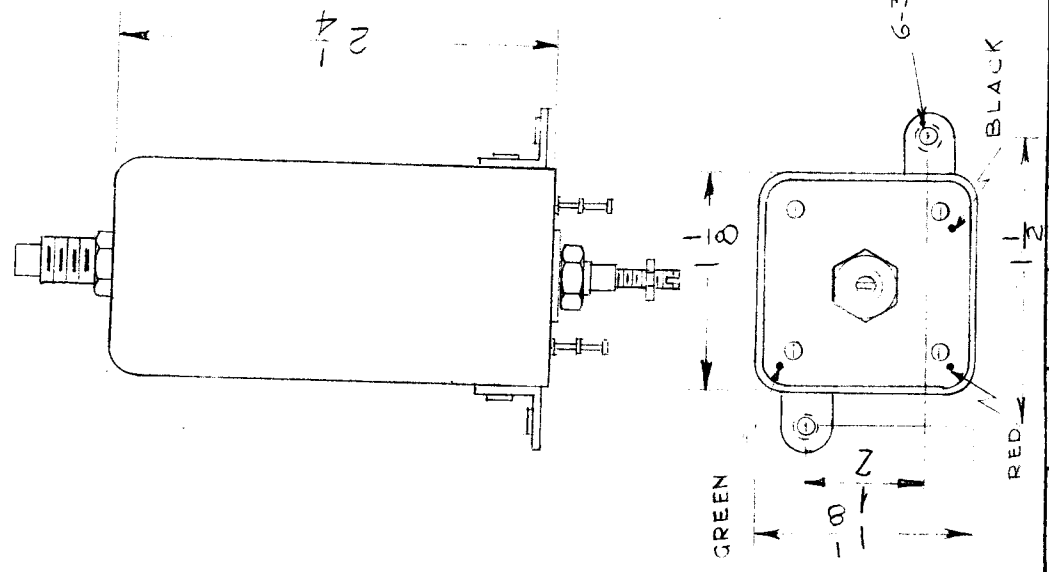
MODEL REQ	LOCATIONAL FUNCTION	OPER FREQ	SYM
CMO 1	V3DPB PLATE COIL	515KC	T306

L-230uh
Q-85 or Greater
Test Freq - 790KC



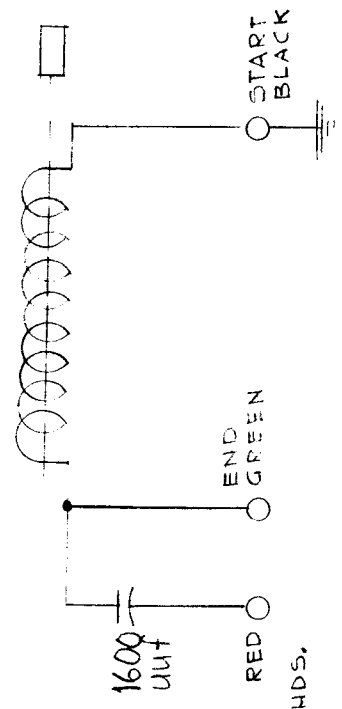
REQ. ITEM	PART NO.	DESCRIPTION	SYMBOL
		THE TECHNICAL MATERIEL CORP.	
		MAMARONECK, NEW YORK	
		COIL, RF, TUNED	
STOCK SIZE			
MATERIAL			
TYPE & TEMPER	HEATTREAT. SPEC.	DRAWN	CHECKED
FINISH & SPEC. NO.			
DEC. DIM. ±	TOLERANCES		
FRAC. DIM. ±	MAXIMUM ALLOWABLE TOLERANCES HAVE BEEN DETERMINED AND ANY DEVIATIONS WILL BE CAUSE FOR REJECTION.		
ANGULAR DIM. ±	REMOVE ALL BURRS AND SHARP EDGES		
ISSUE ITEM	DATE	CH. NO.	DRAFTS
A 1	4-26-61	4758	9072
CHANGED FROM	DATE	CH. NO.	CHECKER
			ENG. APP.
SCALE: 2 A-1866			
ELEC. DES. APP. MECH. DES. APP.			
AC-116			A

REQ. PER. UNIT	1	USED ON	AC-120	B
MODEL	CMO	ASSY. NO.	AX-224	
		DATE	10-5-1960	



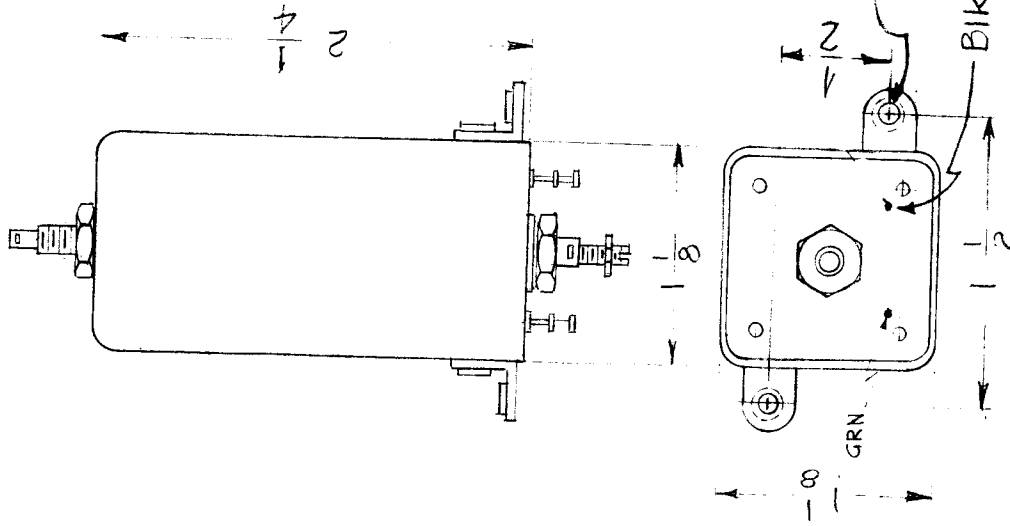
MODEL	CMO	1	V304	PLATE COIL	2-4MC	T301
MODEL REQ						
LOCATIONAL FUNCTION						
OPER FREQ						
SYM						

L = 15 uH
 Q = 75 or Greater
 Test Fr. = 2.5 MC



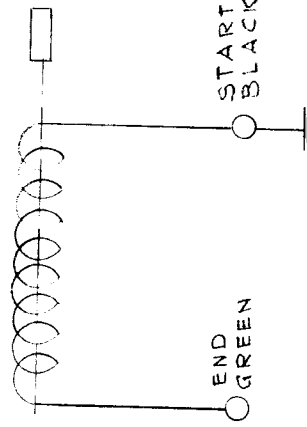
REQ. ITEM	PART NO.	DESCRIPTION	SYMBOL
B 1	L WAS 18 UH	THE TECHNICAL MATERIEL CORP. MAMARONECK, NEW YORK	
A 1	L WAS 19 UH	COIL, RF, TUNED	
ISSUE ITEM	CHANGED FROM		
TOLERANCES			
DEC. DIM. ± FRAC. DIM. ± ANGULAR DIM. ±			
DATE	CH. NO.	DRAFTS	CHECKER
3-1-61	4250	M.A.F.	J.P.B.
12-14-60	3716	M.A.F.	J.P.B.
SCALE:	2A-1870		
MAXIMUM ALLOWABLE TOLERANCES HAVE BEEN DETERMINED AND ANY DEVIATIONS WILL BE CAUSE FOR REJECTION. REMOVE ALL BURRS AND SHARP EDGES			
TYPE & TEMPER	HEAT TREAT. SPEC.	DRAWN	CHECKED
FINISH & SPEC. NO.		ELEC. DES. APP. MECH. DES. APP.	
		AC-120	
		B	

RE. PER UNIT	USED ON	
	MODEL	DATE
1	AX-224	10-5-1960
AC-121		B



MODEL	REQ	LOCATIONAL FUNCTION	OPER FREQ	SYM
CMO	1	Y307 GRIP COIL	2.4 MC	T303

L = 23(±1) uH
 Q = 30 or Greater
 Test Freq = 2.5 MC

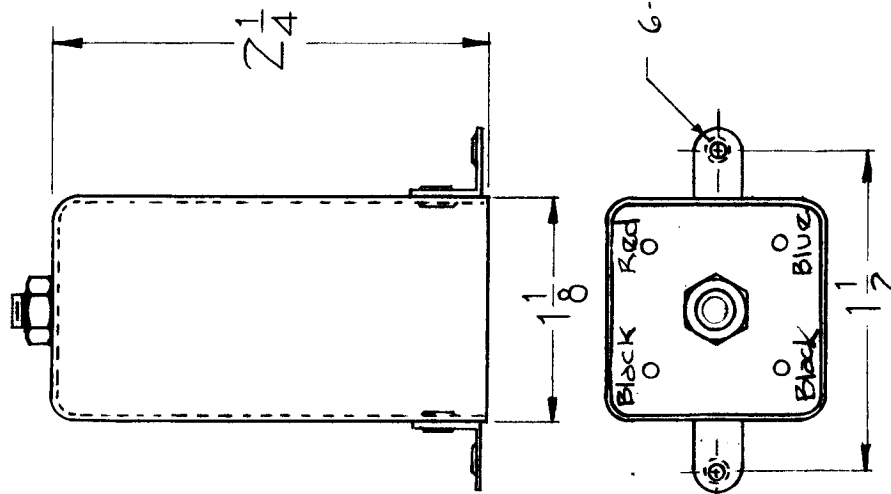


REQ. ITEM	PART NO.	DESCRIPTION	SYMBOL
		THE TECHNICAL MATERIEL CORP. MAMARONECK, NEW YORK	
		COIL RF, TUNED	
4-7-61	4581		
12-14-60	3716		
DATE	CH. NO.	DRAFTS	CHECKER
			ENG. APP.
SCALE: 2 A - 1875			
MAXIMUM ALLOWABLE TOLERANCES HAVE BEEN DETERMINED AND ANY DEVIATIONS WILL BE CAUSE FOR REJECTION. REMOVE ALL BURRS AND SHARP EDGES			
TOLERANCES			
DEC. DIM. ±			
FRAC. DIM. ±			
ANGULAR DIM. ±			
ISSUE ITEM	CHANGED FROM	FINISH & SPEC. NO.	ELEC. DES. APP. MECH. DES. APP.
B 1	L WAS 14.3 uH		
A 2	Q WAS 40		
A 1	L WAS 23 uH		
		TYPE & TEMPER	HEAT TREAT. SPEC.
		DRAWN	CHECKED
		FINISH & SPEC. NO.	ELEC. DES. APP. MECH. DES. APP.
		AC-121	B

REQ. PER UNIT 1	USED ON	
	M DEL CSS-1	DATE 5-2-60
ASSY. NO.		AC-122

MODEL CSS-1	REQ 1	FUNCTION TRANSFORMER	OPER. FREQ. 1 MC	SYM. T603
----------------	----------	-------------------------	---------------------	--------------

ELECTRICAL SPECIFICATIONS
 L - 25 MICROHENRIES ± 3%
 Q - 40 or greater
 FREQ (TEST) - 2.5 MC



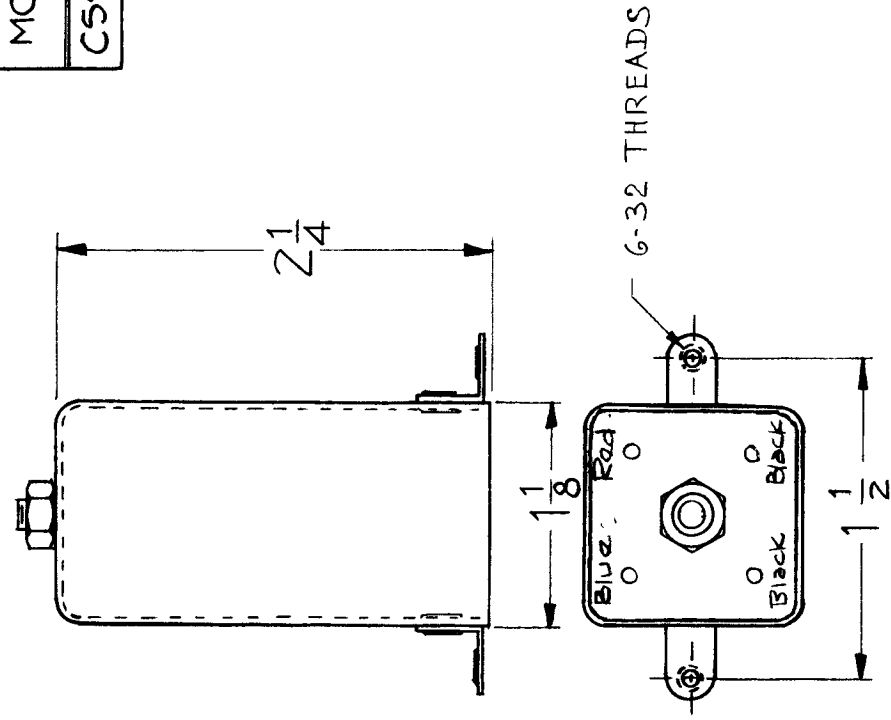
ISSUE ITEM	CHANGED FROM	DATE	CH. NO.	DRAFTS	CHECKER	ENG. APP.
TOLERANCES DEC. DIM. ± FRAC. DIM. ± ANGULAR DIM. ±						
SCALE: ZA-1893 MAXIMUM ALLOWABLE TOLERANCES HAVE BEEN DETERMINED AND ANY DEVIATIONS WILL BE CAUSE FOR REJECTION. REMOVE ALL BURRS AND SHARP EDGES						
REQ. ITEM	PART NO.	DESCRIPTION				
		THE TECHNICAL MATERIEL CORP. MAMARONECK, NEW YORK COIL, RF TUNED				
STOCK SIZE		MATERIAL				
TYPE & TEMPER		HEAT TREAT. SPEC.		DRAWN		
FINISH & SPEC. NO.		CHECKED		FINAL APPR VAL		

REQ. PER UNIT 1	M DEL CSS-1	USED ON	
		ASSY. NO.	DATE
			5-2-60

AC-123 B

MODEL	REQ	FUNCTION	OPER. FREQ.	SYM.
CSS-1	1	TRANSFORMER	1MC	T604

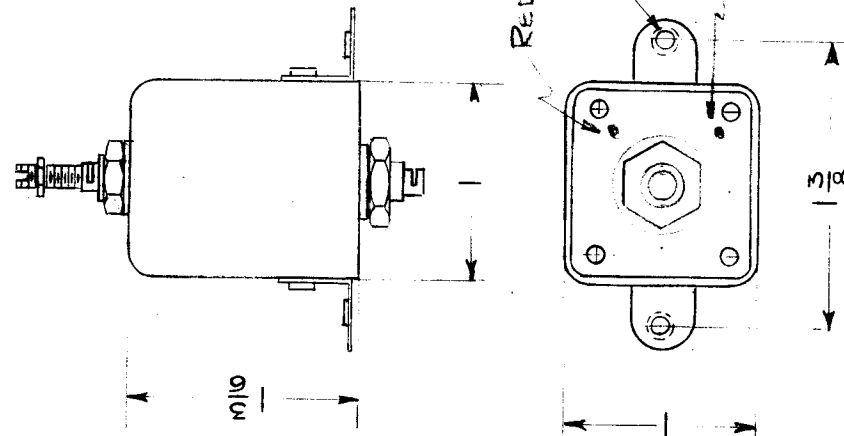
ELECTRICAL SPECIFICATIONS
 L - 85 ± 10 MICROHENRIES
 Q - 50 or Greater
 FREQ.(TEST) - 790 KC



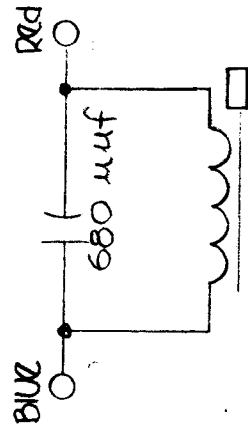
REQ. ITEM	PART NO.	DESCRIPTION	SYMBOL
		THE TECHNICAL MATERIEL CORP. MAMARONECK, NEW YORK	
		COIL, RF, TUNED	
		MATERIAL	
		TYPE & TEMPER	
		HEAT TREAT. SPEC.	
		FINISH & SPEC. NO.	
B 1	5047	ON ELECTRICAL SPEC. Q: WAS 75	
A 1	3247	Electrical Specifications L: was 100 Microhenries	
ISSUE ITEM	CHANGED FROM	DATE	CH. NO.
		6-9-61	5047
		10-24-60	3247
		DATE	CH. NO.
		10-24-60	3247
		SCALE:	ZA-1894
MAXIMUM ALLOWABLE TOLERANCES HAVE BEEN DETERMINED AND ANY DEVIATIONS WILL BE CAUSE FOR REJECTION. REMOVE ALL BURRS AND SHARP EDGES			
DEC. DIM. ±			
FRAC. DIM. ±			
ANGULAR DIM. ±			
		TYPE & TEMPER	CHECKED
		HEAT TREAT. SPEC.	
		FINISH & SPEC. NO.	
		FINAL APPR VAL	
		ELEC. DES. APP MECH. DES. APP	
		AC-123	B

REQ. PER UNIT	USED ON	
	MODEL	DATE
	ASBY. NO.	
1	CHG-1	DIVIDER 9-23-60
1	CHG-2	DIVIDER 11-5-63
1	HFS-1	AX-389 11-5-63

AC-125
C



6-32 THREADS



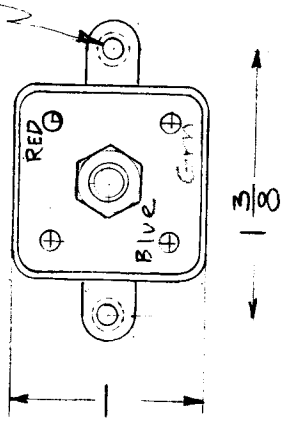
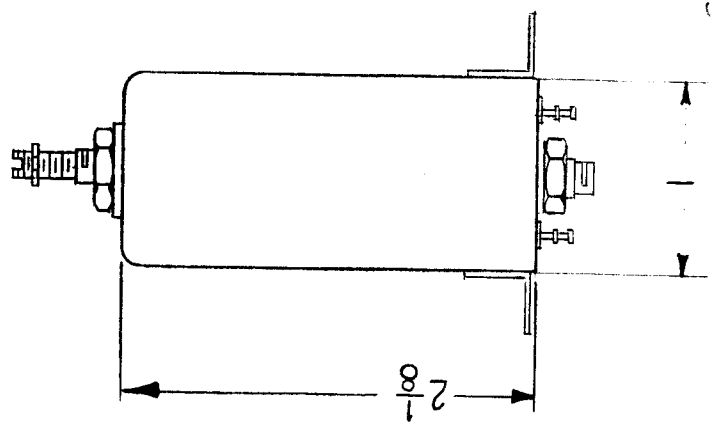
TEST DATA (W/OUT CORE)
 L = 540 uh \pm 10%
 Q = 50 or Greater
 FREQ = 790 KC

MODEL	REQ	FUNCTION	OPER. FREQ.	SYM.
CHG-1	1	6CS6 MIXER	250KC	L1601
CHG-2	1	PLATE COIL	250KC	L2601
HFS-1	1	"	250 KC	L3702

REQ. ITEM	PART NO.	DESCRIPTION	SYMBOL
C 1	UPDATED	THE TECHNICAL MATERIEL CORP.	
B 1	ON TEST DATA L WAS 540 uh \pm 15	MAMARONECK, NEW YORK	
A 1	680 muf was 560 muf	COIL, RF, TUNED	
ISSUE ITEM	CHANGED FROM		
TOLERANCES			
DEC. DIM. \pm FRAC. DIM. \pm ANGULAR DIM. \pm			
12/16/63	10473		
5-3-61	4807		
11/16/60	3481		
DATE	CH. NO.	DRAFTS	CHECKER
	2 A - 1954		ENG. APP.
MAXIMUM ALLOWABLE TOLERANCES HAVE BEEN DETERMINED AND ANY DEVIATIONS WILL BE CAUSE FOR REJECTION. REMOVE ALL BURRS AND SHARP EDGES			
DRAWN		CHECKED	
g de ducid		A J T	
FINISH & SPEC. NO.		ELEC. DES. APP. MECH. DES. APP.	
		AC-125	
		C	

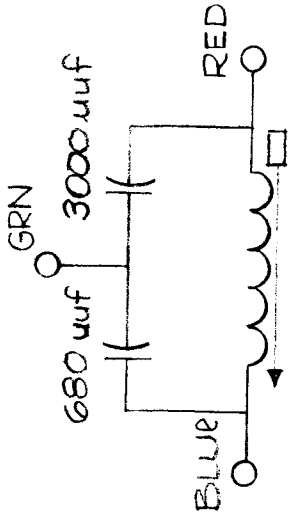
REQ. PER UNIT		USED ON	
1	CHG-1	ASBY. NO.	DATE
1	CHG-2	DIVIDER	9-23-1960
1	HFS-1	DIVIDER	11-5-63
		AX-389	11-5-63

AC-126 D



MODEL	REQ	FUNCTION	OPER. FREQ.	SYM
CHG-1	1	250KC OUTPUT	250 KC	L1603
CHG-2	1	250 KC OUTPUT	250 KC	L2603
HFS-1	1	250 KC OUTPUT	250 KC	L3704

TEST DATA (W/OUT CORE)
 L=540 uH ± 10%
 Q=50 OF G10A10
 FREQ=790 KC



ISSUE	ITEM	CHANGED FROM	DATE	CH. NO.	DRAFTS	CRECKER	ENG. APP.	REQ. ITEM	PART NO.	DESCRIPTION	SYMBOL
D	1	DWG UPDATED	12/15/63	10473	SPD	WFB	WFB			THE TECHNICAL MATERIEL CORP. MAMARONECK, NEW YORK	
C	1	ON TEST DATA L WAS 540UH (±15)	5-3-61	4806	M.A.F.	WFB	WFB			COIL, RF, TUNED	
B	1	2.176 DIM WAS 1.3/16	5-11-61	4325	M.A.F.	WFB	WFB				
A	3	RED WAS BLACK	11-15-60	3479	PU	WFB	WFB				
	2	3000UH WAS 1600 UH									
	1	680UH WAS 820UH									
TOLERANCES								MATERIAL		DRAWN	
SCALE: 2A-1955								HEAT TREAT. SPEC		CHECKED	
MAXIMUM ALLOWABLE TOLERANCES HAVE BEEN DETERMINED AND ANY DEVIATIONS WILL BE CAUSE FOR REJECTION. REMOVE ALL BURRS AND SHARP EDGES								TYPE & TEMPER		FINAL APPROVAL	
DEC. DIM. ±								FINISH & SPEC. NO.		ELEC. DES. APP. MECH. DES. APP.	
FRAC. DIM. ±											
ANGULAR DIM. ±											

REQ. PER. UNIT	MODEL	USED ON	DATE
1	CHG-1	ASSY. NO.	9-23-60
1	CHG-2	DIVIDER	11-5-63
1	HFS-1	AX-389	11-5-63

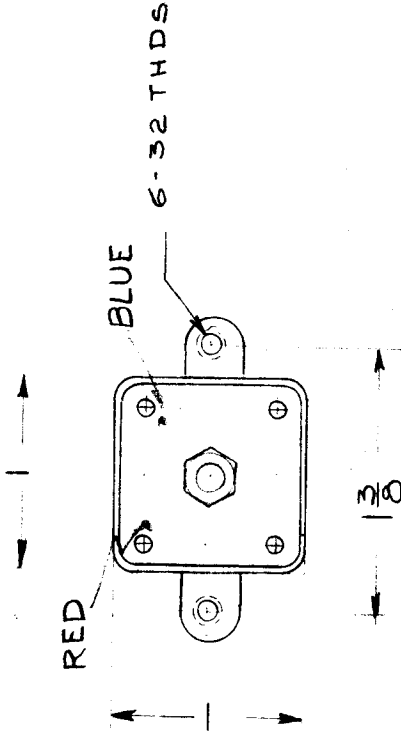
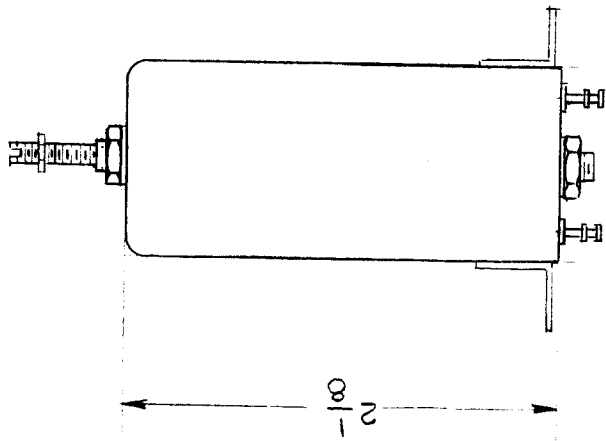
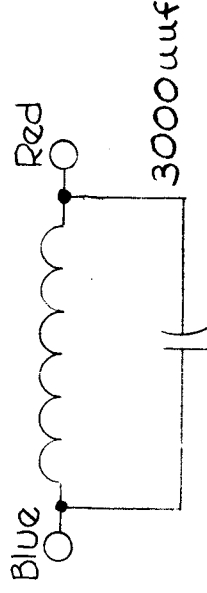
AC-127

B

MODEL	REQ	FUNCTION	OPER FREQ	SYM
CHG-1	1	750KC TRIPLER PLATE	750 KC	L1602
CHG-2	1	" "	750KC	L2602
HFS-1	1	" "	750KC	L3703

TEST DATA (W/OUT CORE)

L = 11uH (± 5%)
 Q = 50 OR GREATER
 FREQ. = 2.5 MC



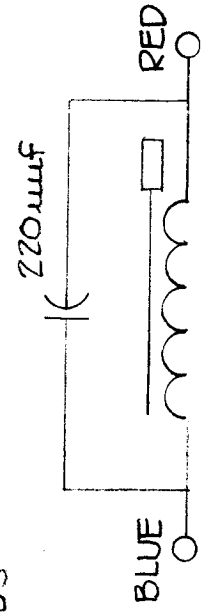
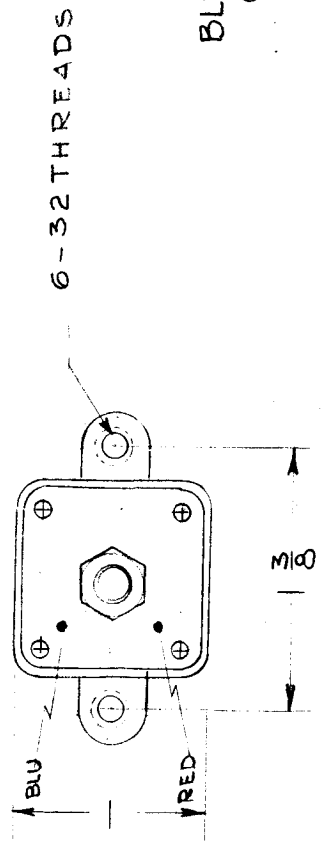
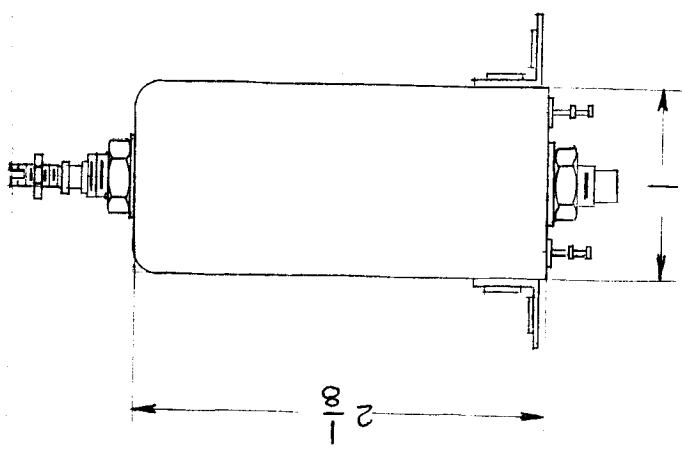
REG. ITEM	PART NO.	DESCRIPTION	SYMBOL
B 1	UPDATED	THE TECHNICAL MATERIEL CORP. MAMARONECK, NEW YORK	B
A 4	10473	COIL, RF, TUNED	
3	3480		
2	11-15-60		
1	12/14/62		
ISSUE ITEM	CHANGED FROM		
TOLERANCES			
DEC. DIM. ±			
FRAC. DIM. ±			
ANGULAR DIM. ±			
SCALE: 2A - 1956			
MAXIMUM ALLOWABLE TOLERANCES HAVE BEEN DETERMINED AND ANY DEVIATIONS WILL BE CAUSE FOR REJECTION. REMOVE ALL BURRS AND SHARP EDGES			
DATE	CH. NO.	DRAFTS	CHECKER
11-15-60	2A	RU	JK
12/14/62			WFB
MATERIAL		DRAWN	
		G. R. F.	
TYPE & TEMPER		HEAT TREAT. SPEC.	
		CHECKED	
		FINAL APPROVAL	
		AC-127	
FINISH & SPEC. NO.		ELEC. DES. APP. MECH. DES. APP.	

REQ. PER. UNIT	1	USED ON	AC-128	A
MODEL	CHG-1	ASSY. NO.	SYN	
		DATE	9-26-1960	

MODEL	REQ.	FUNCTION	OPER. FREQ. MCS	SYM.
CHG-1	1	MIXER PLATE LBA	2	L1502

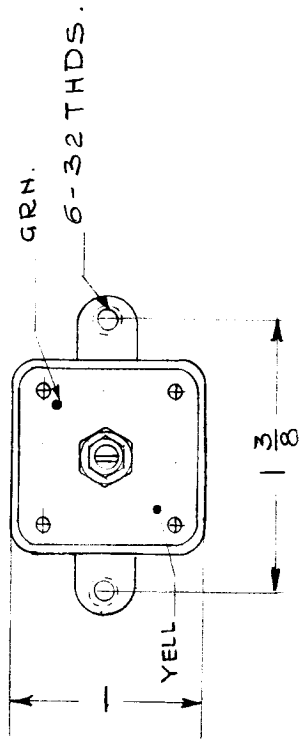
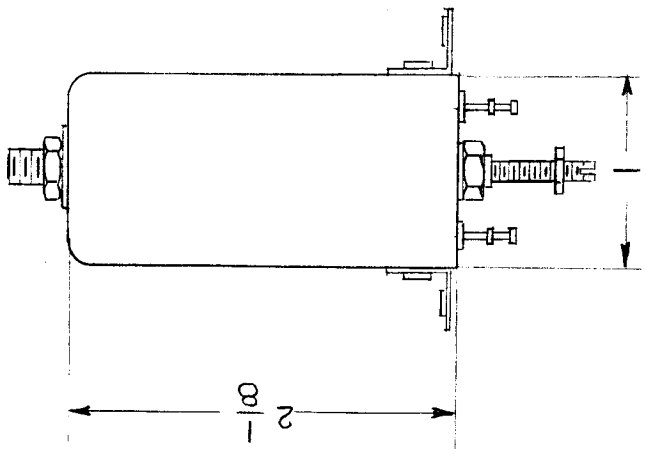
TEST DATA (W/OUT CORE)

$L = 20 \mu h (\pm 1)$
 $Q = 70$ or Greater
 FREQ. = 2.5 MC



REQ. ITEM		PART NO.		DESCRIPTION	SYMBOL	
				THE TECHNICAL MATERIEL CORP.		
		STOCK SIZE		MAMARONECK, NEW YORK		
		MATERIAL		COIL, RF, TUNED		
ISSUE ITEM	CHANGED FROM	DATE	CH. NO.	DRAFTS	CHECKER	ENG. APP.
A 1	SYMBOL WAS T1502	11-8-60	3430	V.F.	JCH	
TOLERANCES						
SCALE: 2A-1966						
MAXIMUM ALLOWABLE TOLERANCES HAVE BEEN DETERMINED AND ANY DEVIATIONS WILL BE CAUSE FOR REJECTION. REMOVE ALL BURRS AND SHARP EDGES						
DEC. DIM. ±						
FRAC. DIM. ±						
ANGULAR DIM. ±						
FINISH & SPEC. NO.				ELEC. DES. APP. MECH. DES. APP.		
DRAWN				CHECKED		
A.R.F.				A.J.J.		
FINAL APPROVAL				AC-128		
				A		

REQ. PER UNIT	USED ON	
1	MODEL	DATE
	CHG-1	9-26-1960
	MF/RF	
	AC-130	



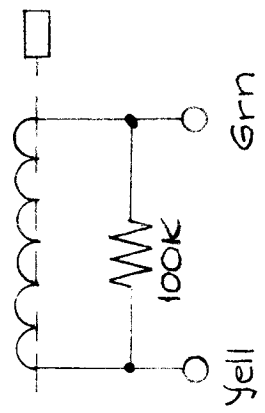
MODEL	REQ	FUNCTION	OPER FREQ	SYM
CHG-1	1	MID FREQ AMPL GRID COIL	1.75-3.75 MCS	L1102

TEST DATA (W/O OUT CORE)

L = 22 μh (±1)

Q = 30 or Greater

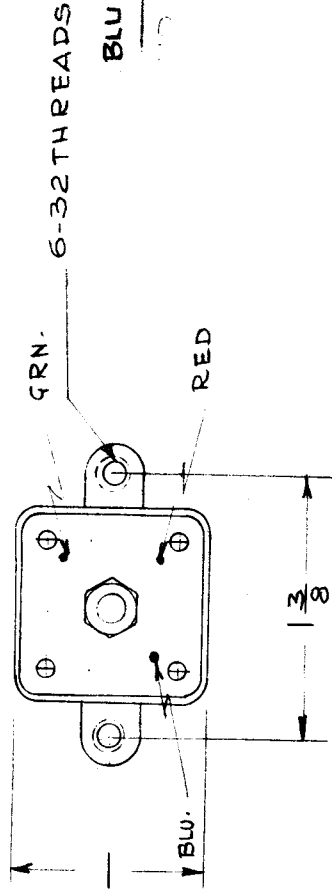
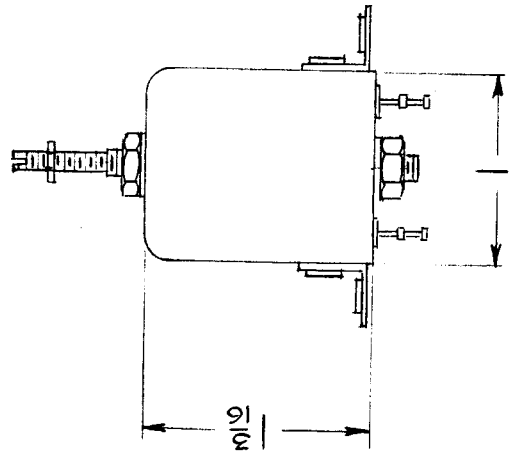
Freq = 2.5 MC



REQ. ITEM	PART NO.	DESCRIPTION	SYMBOL
		THE TECHNICAL MATERIEL CORP.	
		MAMARONECK, NEW YORK	
		COIL, RF, TUNED	
ISSUE ITEM	CHANGED FROM	DATE	CH. NO.
TOLERANCES			
DEC. DIM. ±	SCALE: 2A - 1968		
FRAC. DIM. ±	MAXIMUM ALLOWABLE TOLERANCES HAVE BEEN DETERMINED AND ANY DEVIATIONS WILL BE CAUSE FOR REJECTION.		
ANGULAR DIM. ±	REMOVE ALL BURRS AND SHARP EDGES		
	TYPE & TEMPER	HEATTREAT. SPEC.	DRAWING
			J. De Luis
	MATERIAL		Grn
	STOCK SIZE		Yell
	FINISH & SPEC. NO.		AC-130
			FINAL APPROVAL
			AST

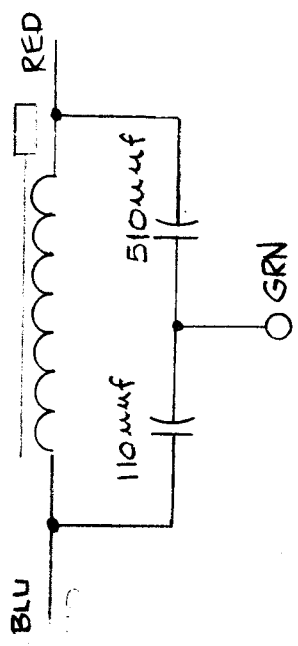
QTY. PER UNIT	1
MODEL	CHG-1
USED ON	DATE
ASST. NO.	9-26-1960

AC-131 B



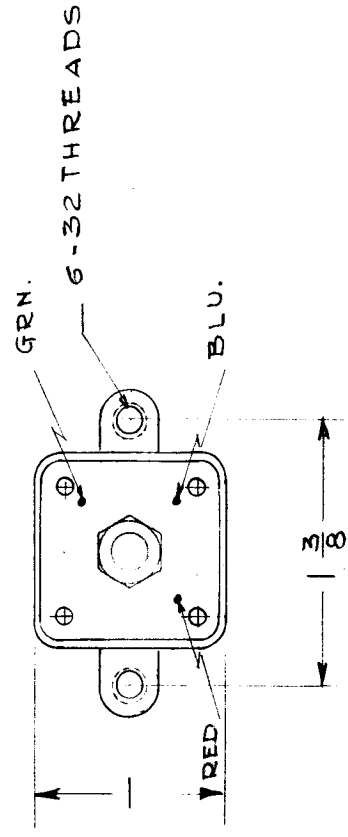
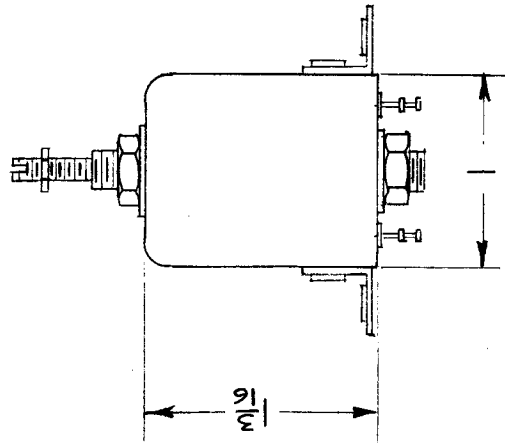
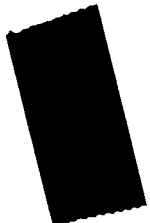
MODEL	REQ. FUNCTION.	OPER. FREQ.	SYM.
CHG-1	1	608 1MC TUNING COIL	L1305

TEST DATA (W/OUT CORE)
 L = 140 μ h \pm 10%
 Q = 40
 FREQ = 790 KC



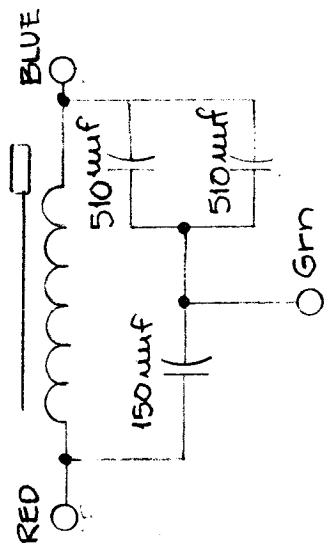
REQ. ITEM	DESCRIPTION	PART NO.	SYMBOL
B 1	ON TEST DATA "L" WAS 140 μ h	5013	
A	LW 25 170 μ h (165 to 175)	3767	
ISSUE ITEM	CHANGED FROM	DATE	CH. NO.
		7/14/60	3767
		DATE	CH. NO.
		2A-1969	
TOLERANCES			
MAXIMUM ALLOWABLE TOLERANCES HAVE BEEN DETERMINED AND ANY DEVIATIONS WILL BE CAUSE FOR REJECTION. REMOVE ALL BURRS AND SHARP EDGES			
DEC. DIM. \pm			
FRAC. DIM. \pm			
ANGULAR DIM. \pm			
FINISH & SPEC. NO.			
TYPE & TEMPER	HEAT TREAT. SPEC.		
98c lining			
DRAWN	CHECKED		
J. K. A.	J. G.		
MATERIAL			
COIL, RF, TUNED			
STOCK SIZE			
THE TECHNICAL MATERIAL CORP. MAMARONECK, NEW YORK			
FINAL APPROVAL			
AC-131 B			

REQ. PER UNIT	USED ON	
	MODEL	DATE
1	CHG-1	9-26-1960
AC-132		B



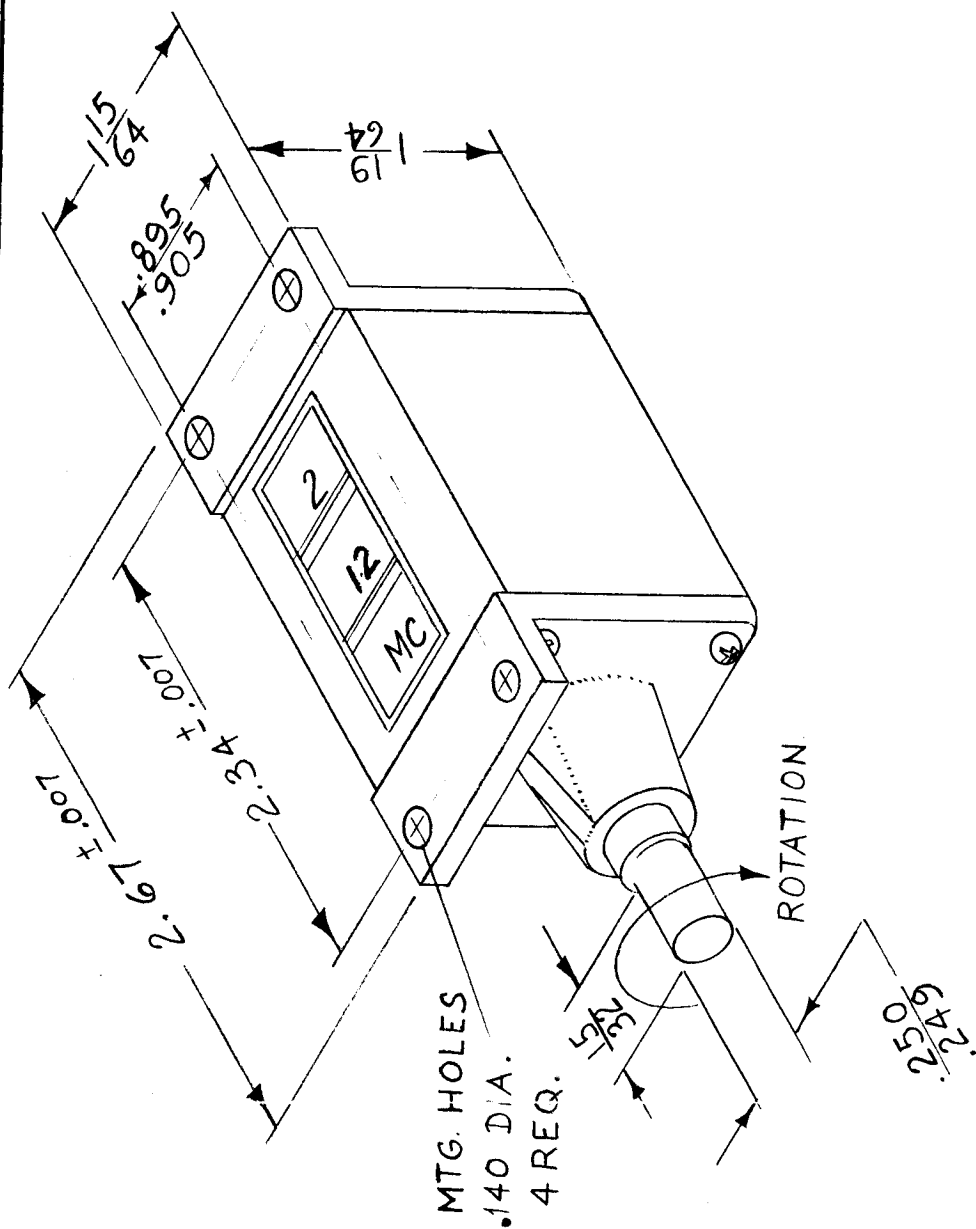
MODEL	REQ.	FUNCTION	OPER FREQ.	SYM.
CHG-1	1	600K 1MC AMP. OUTPUT	1 MC	L1301

TEST DATA (W/O UT CORE)
 $L = 140 \mu h \pm 10\%$
 $Q = 40$
 $FREQ = 790 KC$



REQ. ITEM	PART NO.	DESCRIPTION	SYMBOL
B 1	ON TEST DATA "L" WAS 140 ± 10% 6-7-61 5013	THE TECHNICAL MATERIEL CORP. MAMARONECK, NEW YORK	
A 1	L WAS 170 μh (165 to 175) 13/16/60 3767	COIL, RF, TUNED	
ISSUE ITEM	CHANGED FROM		
TOLERANCES			
DEC. DIM. ± FRAC. DIM. ± ANGULAR DIM. ±			
DATE		CH. NO.	DRAFTS
13/16/60		3767	DR
DATE		CH. NO.	CHECKER
6-7-61		5013	M.A.F.
SCALE: 2A-1970			
MAXIMUM ALLOWABLE TOLERANCES HAVE BEEN DETERMINED AND ANY DEVIATIONS WILL BE CAUSE FOR REJECTION. REMOVE ALL BURRS AND SHARP EDGES			
TYPE & TEMPER		HEAT TREAT. SPEC.	
FINISH & SPEC. NO.			
DRAWN		CHECKED	FINAL APPROVAL
G.R.F.			AC-132
MATERIAL			
STOCK SIZE			

RE. PER. UNIT	1
MODEL	ACU
USED ON ASSY. N.	
DATE	10-3-60
AC-133	
A	



SPECIFICATIONS ~
 PLAIN BEARING TYPE
 NON RESET
 READINGS
 POSITION 1 ~ 2-12 MC
 2 ~ 2 ARROWS
 3 ~ 12-20 MC
 4 ~ 20-30 MC

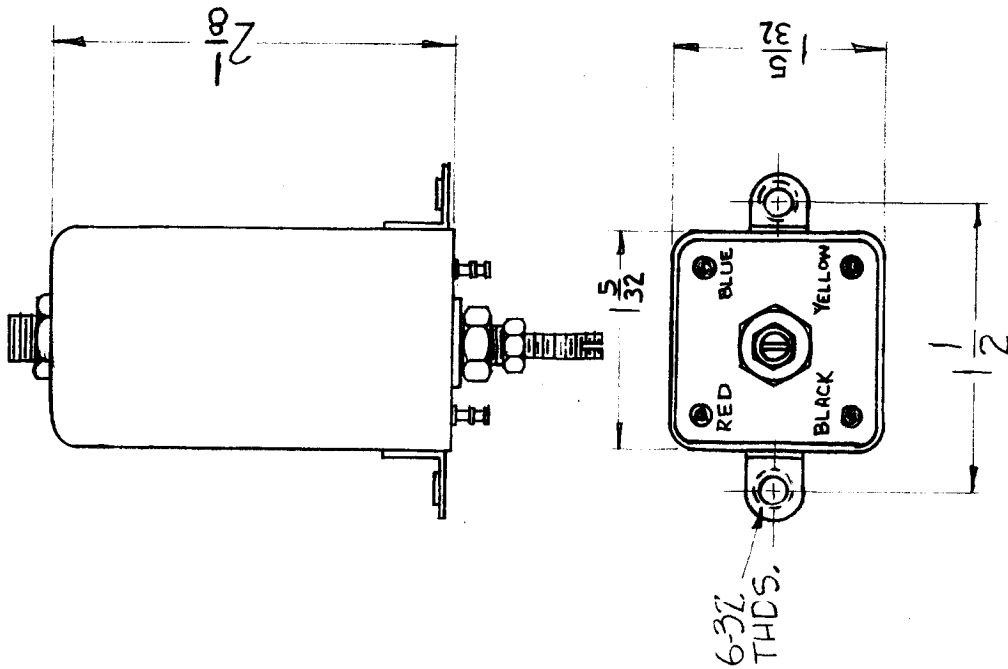
FIGURES ~ BLACK ON WHITE
 BACKGROUND

REQ. ITEM	PART NO.	DESCRIPTION	SYMBOL
		THE TECHNICAL MATERIEL CORP. MAMARONECK, NEW YORK	
		COUNTER, BAL BAND	
		MATERIAL	
		HEAT TREAT. SPEC.	
		TYPE & TEMPER	
		FINISH & SPEC. NO.	
		ELEC. DES. APP. MECH. DES. APP.	
ISSUE ITEM	CHANGED FROM	CHECKER	ENG. APP.
A	A 3116-9 WAS 4A-1974	L.A.K. [Signature]	[Signature]
	DATE	CH. NO.	DRAFTS
	3-22-67	18008	L.A.K. [Signature]
SCALE: A3116-9			
TOLERANCES			
MAXIMUM ALLOWABLE TOLERANCES HAVE BEEN DETERMINED AND ANY DEVIATIONS WILL BE CAUSE FOR REJECTION. REMOVE ALL BURRS AND SHARP EDGES			
DEC. DIM. ±			
FRAC. DIM. ±			
ANGULAR DIM. ±			
		DRAWN	CHECKED
		[Signature]	[Signature]
		FINAL APPROVAL	
		[Signature]	
		AC-133	A

REQ. PER. UNIT	MODEL	DATE	SYMBOL
	TIS-3	11-28-60	AG-135 C

ELECTRICAL SPECIFICATIONS

NOMINAL IND 2.5 mh
 MIN IND < 1.5 mh
 MAX IND > 3.5 mh
 Q AT NOMINAL IND > 50 AT 250 KC.



REQ. ITEM	PART NO.	DESCRIPTION	SYMBOL
C		THE TECHNICAL MATERIEL CORP. MAMARONECK, NEW YORK	
B	4-19-67 18073 L.A.K.	COIL, R.F. TUNED	
A	2-16-61 4201 12-27-60 3817		
ISSUE ITEM	CHANGED FROM		
TOLERANCES			
SCALE: 2A-2028			
MAXIMUM ALLOWABLE TOLERANCES HAVE BEEN DETERMINED AND ANY DEVIATIONS WILL BE CAUSE FOR REJECTION. REMOVE ALL BURRS AND SHARP EDGES			
DEC. DIM. ±			
FRAC. DIM. ±			
ANGULAR DIM. ±			
DRAWN	CHECKED	DATE	CH. NO.
DE	JK	11-28-60	2028
ELEC. DES. APP. MECH. DES. APP.		FINISH & SPEC. NO.	
AC135		AC135 C	

RE PER. UNIT		USED ON	
MODEL	ASSY. NO.	DATE	
		9-25-61	
AC-137			B

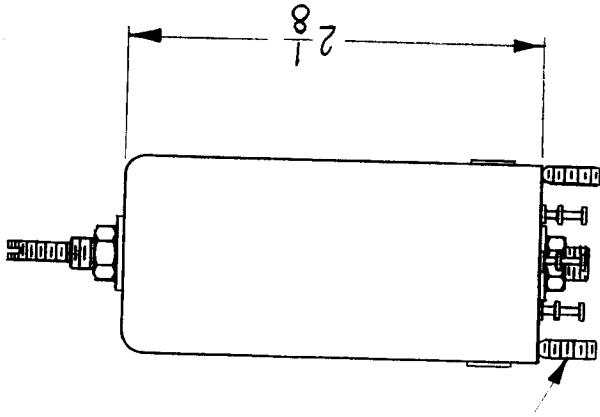
TMC PART No.	MODEL	REQ.	FUNCTION	OPER FREQ.	SYMBOL
AC137	HFI-1	1	AVC TRANSFORMER	250 KC	L101
	SBS-1	1	AVC TRANSFORMER	250 KC	L101
AC137-2	SBS-7	1	AVC TRANSFORMER	205 KC	L101

ELECTRICAL SPEC

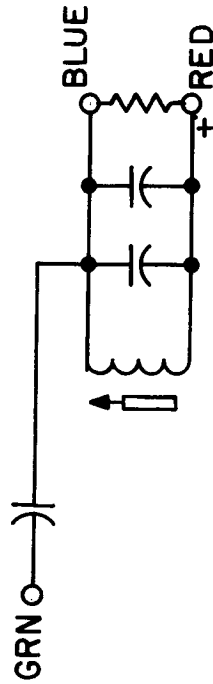
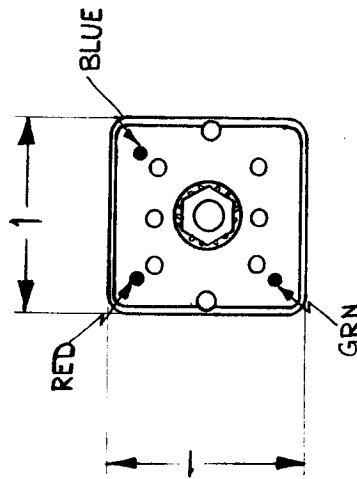
PRIMARY
 IND: 95-105 μ h
 Q: 40 OR GREATER
 FREQ: 790 KC

MECHANICAL SPEC.

CASE ~ ALUMINUM
 CASE FINISH
 TERM. BOARD ~ PHENOLIC



6-32 THD.



SCHEMATIC DIAGRAM

+ INDICATES START OF WINDING.

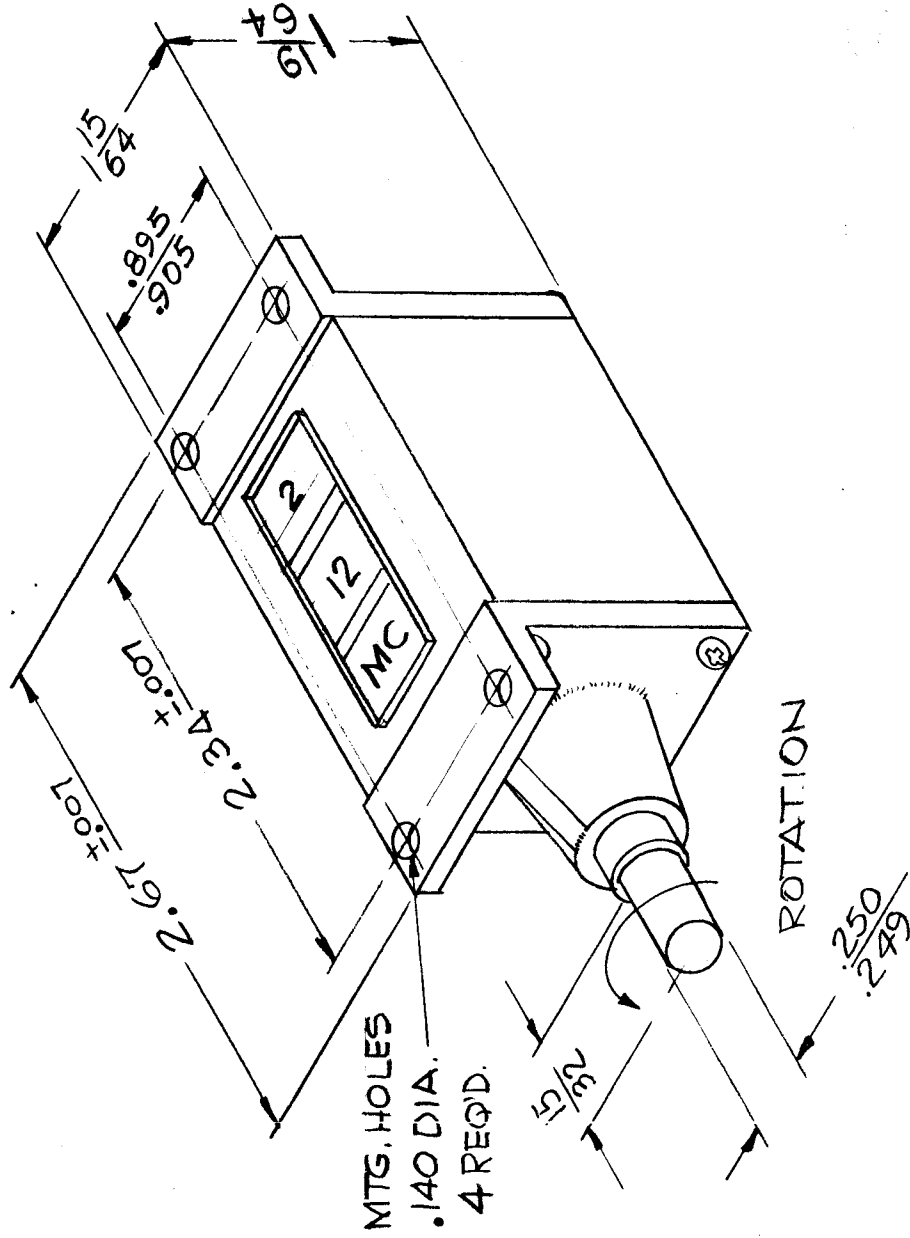
REQ. ITEM	PART NO.	M. GELLMAN	DESCRIPTION	SYMBOL
		THE TECHNICAL MATERIEL CORP. MAMARONECK, NEW YORK		
		COIL, IF TUNED		
		MATERIAL		
		TYPE & TEMPER HEAT TREAT. SPEC.		
		FINISH & SPEC. NO.		
DEC. DIM. \pm		TOLERANCES		
FRAC. DIM. \pm		MAXIMUM ALLOWABLE TOLERANCES HAVE BEEN DETERMINED AND ANY DEVIATIONS WILL BE CAUSE FOR REJECTION.		
ANGULAR DIM. \pm		REMOVE ALL BURRS AND SHARP EDGES		
ISSUE ITEM	CHANGED FROM	DATE	CH. NO.	DRAFTS CHECKER
B	ELEC SPEC "Q" WAS 35-45	10/19/66	17058	WAO
A #	TMC PIN COLL. FLANGE A137-2 ADDED	11/26/61	15089	AVK
SCALE:			(2A-2151)	
DRAWN: W.A.F. CHECKED: [Signature]				
FINAL APPROVAL: [Signature]				
M. GELLMAN				AC-137
ELEC. DES. APP. [Signature]				B

THE CONTENTS OF THIS DRAWING ARE THE EXCLUSIVE PROPERTY OF THE TECHNICAL MATERIEL CORP. ITS UNAUTHORIZED USE OR REPRODUCTION IN WHOLE OR IN PART IS STRICTLY FORBIDDEN.

REQ. PER UNIT: 1
 MODEL: GPT-40K
 USED ON ASSY. NO.: AT-103

DATE: 10-23-67

AC-139
 B



SPECIFICATIONS~
 PLAIN BEARING TYPE
 NON RESET
 READINGS~
 POSITION 1~ 2-12 MC
 2~ BLANK
 3~ 12-20 MC
 4~ 20-28 MC

REQ. ITEM	PART NO.	DESCRIPTION	SYMBOL
		THE TECHNICAL MATERIEL CORP. MAMARONECK, NEW YORK	
		COUNTER ANTENNA TUNER	
		MATERIAL	
		TYPE & TEMPER	
		HEAT TREAT. SPEC.	
		FINISH & SPEC. NO.	
		ELEC. DES. APP.	
		MECH. DES. APP.	
		CHECKED	
		DRAWN	
		FINAL APPROVAL	
			AC-139 B

UNLESS OTHERWISE SPECIFIED:
 DIMENSIONS ARE IN INCHES
 TOLERANCES ON
 FRAC. ± 1/4 DEC. ± .005 ANGLES ± 1/2°

SCALE: A-3116-5
 MAXIMUM ALLOWABLE TOLERANCES HAVE BEEN DETERMINED AND ANY DEVIATIONS WILL BE CAUSE FOR REJECTION. REMOVE ALL BURRS AND SHARP EDGES

DATE: 3-7-67
 CH. NO.: 17885
 DRAFTS: L.A.K.
 CHECKER: [Signature]
 ENG. APP.: [Signature]

DATE: 2-16-65
 CH. NO.: 13510
 DRAFTS: 82
 CHECKER: [Signature]
 ENG. APP.: [Signature]

THE CONTENTS OF THIS DRAWING ARE THE EXCLUSIVE PROPERTY OF THE TECHNICAL MATERIEL CORP. ITS UNAUTHORIZED USE OR REPRODUCTION IN WHOLE OR IN PART IS STRICTLY FORBIDDEN.

REQ. PER UNIT

MODEL

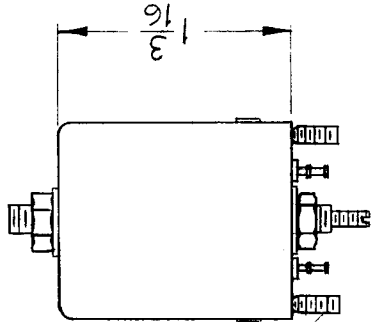
USED ON ASS'Y. NO.

DATE

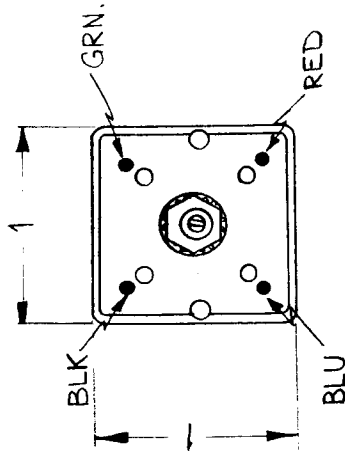
AC-144

A

12-6-61



6-32 THD.

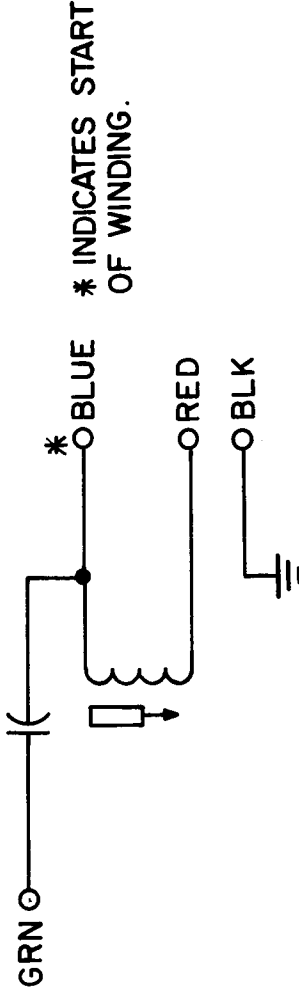


ELECTRICAL SPEC.

PRIMARY
 IND = 55-65 MH.
 Q = 45 OR BETTER
 FREQ = 2.5 MC

MECHANICAL SPEC.

CASE ~ ALUMINUM
 CASE FINISH ~ S404 YEL IRIDITE
 TERM. BOARD ~ PHENOLIC.



SCHEMATIC DIAGRAM

MODEL	REQ.	FUNCTION	OPER. FREQ.	SYMBOL
AFC-2	1		250 KC	

REQ. ITEM	PART NO.	DESCRIPTION	SYMBOL
		THE TECHNICAL MATERIEL CORP. MAMARONECK, NEW YORK	
		250 KC COIL FOR CONTROLLED OSC/AMPL	
		MATERIAL	
		TYPE & TEMPER	
		HEAT TREAT. SPEC.	
		DRAWN	
		CHECKED	
		ELEC. DES. APP.	
		MECH. DES. APP.	
		FINISH & SPEC. NO.	
		FINAL APPROVAL	
		AC-144	A

DATE: 1-30-62
 CH. NO.: 6281
 DRAFTS: JL
 CHECKER: [Signature]
 ENG. APP.: [Signature]
 SCALE: (2A-2245)

UNLESS OTHERWISE SPECIFIED:
 DIMENSIONS ARE IN INCHES.
 TOLERANCES ON
 FRAC. ± 1/64 DEC. ± .003 ANGLES ± 1/2°

A

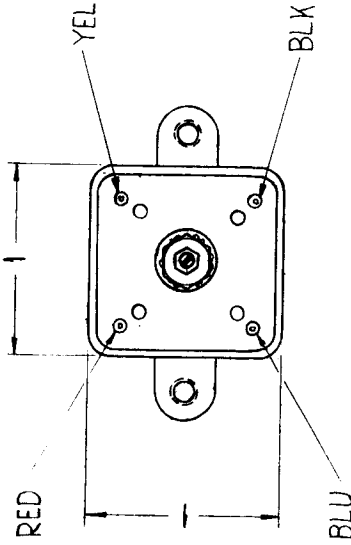
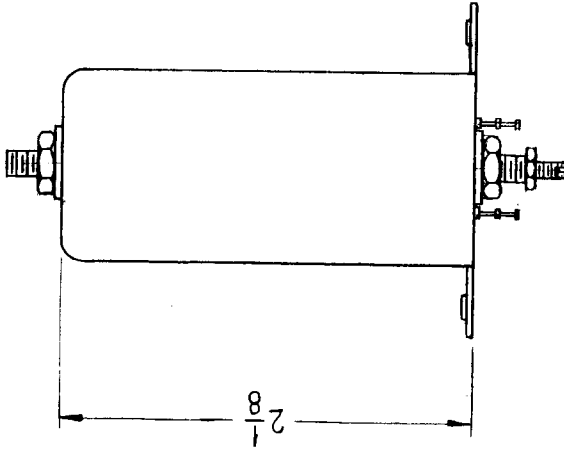
THE CONTENTS OF THIS DRAWING ARE THE EXCLUSIVE PROPERTY OF THE TECHNICAL MATERIEL CORP. ITS UNAUTHORIZED USE OR REPRODUCTION IN WHOLE OR IN PART IS STRICTLY FORBIDDEN.

REQ. PER UNIT

USED ON
7-26-62

MODEL
HFA-1

ASSY. NO.



MODEL REQ.	FUNCTION	OPER. FREQ.	SYMBOL
HFA-1 2		250 KC	T7001,7005

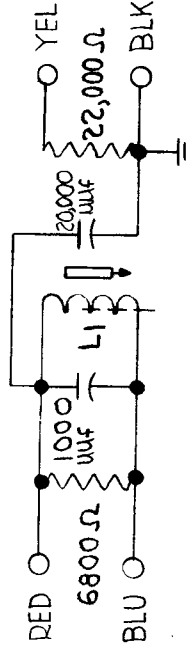
ELECTRICAL SPEC.

PRIMARY

IND = 300 μ h \pm 10 %
Q = 55 OR GREATER
TEST FREQ. = 790 KC

MECHANICAL SPEC.

CASE ~ ALUMINUM
CASE FINISH ~ CLEAR LACQUER
TERM. BOARD ~ PHENOLIC



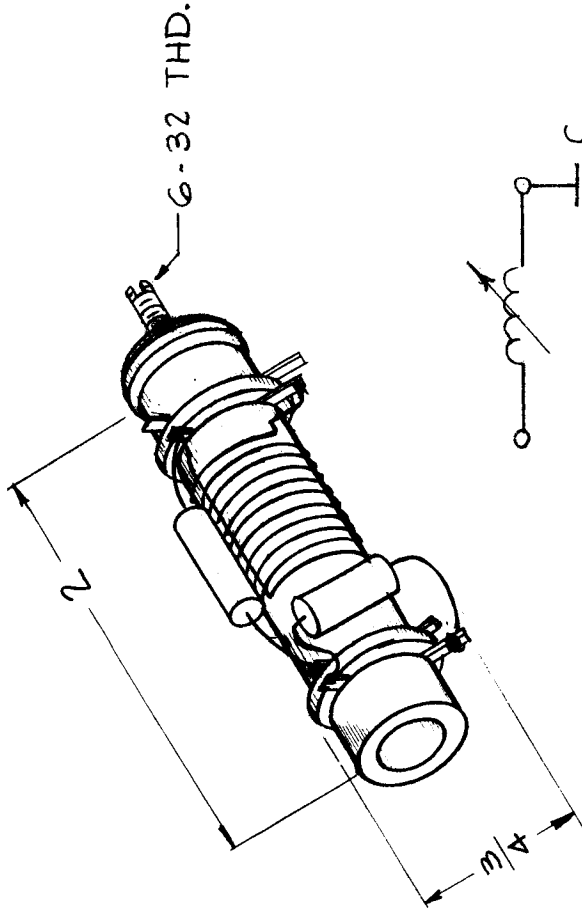
—SCHEMATIC DIAGRAM—

REQ. ITEM	PART NO.	FAIOLA	DESCRIPTION	SYMBOL
			THE TECHNICAL MATERIEL CORP. MAMARONECK, NEW YORK	
			COIL, RF TUNED	
			MATERIAL	
			S. Granfilippo	BP
			DRAWN	CHECKED
			G.R. Fajola	FINAL APPROVAL
			ELEC. DES. APP. MECH. DES. APP.	AC-151
			FINISH & SPEC. NO.	
			DATE	CH. NO.
			DRAFTS	CHECKER
			ENG. APP.	
			SCALE: 2A-2501	
			UNLESS OTHERWISE SPECIFIED: DIMENSIONS ARE IN INCHES TOLERANCES ON FRAC. \pm 1/64 DEC. \pm .005 ANGLES \pm 1/2°	
			MAXIMUM ALLOWABLE TOLERANCES HAVE BEEN DETERMINED AND ANY DEVIATIONS WILL BE CAUSE FOR REJECTION. REMOVE ALL BURRS AND SHARP EDGES	

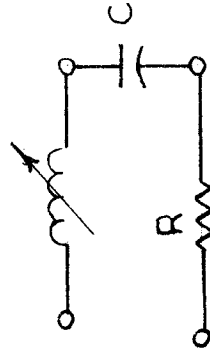
THE CONTENTS OF THIS DRAWING ARE THE EXCLUSIVE PROPERTY OF THE TECHNICAL MATERIEL CORP. ITS UNAUTHORIZED USE OR REPRODUCTION IN WHOLE OR IN PART IS STRICTLY FORBIDDEN.

REQ. PER UNIT	MODEL	USED ON
1	GPR-92	ASSY. NO.
		DATE
		6-7-62

AC-153	SYMBOL	FUNCTION
	L103	2 ND R.F BANDS



SPECIFICATIONS
 TURNS: 10 1/4
 C: 5 PF
 R: 22KΩ
 FORM MATERIAL: STEATITE
 FREQUENCY: 7.9MC



SCHEMATIC

UNLESS OTHERWISE SPECIFIED:
 DIMENSIONS ARE IN INCHES
 TOLERANCES ON
 FRAC. ± 1/64 DEC. ± .005 ANGLES ± 1/2°

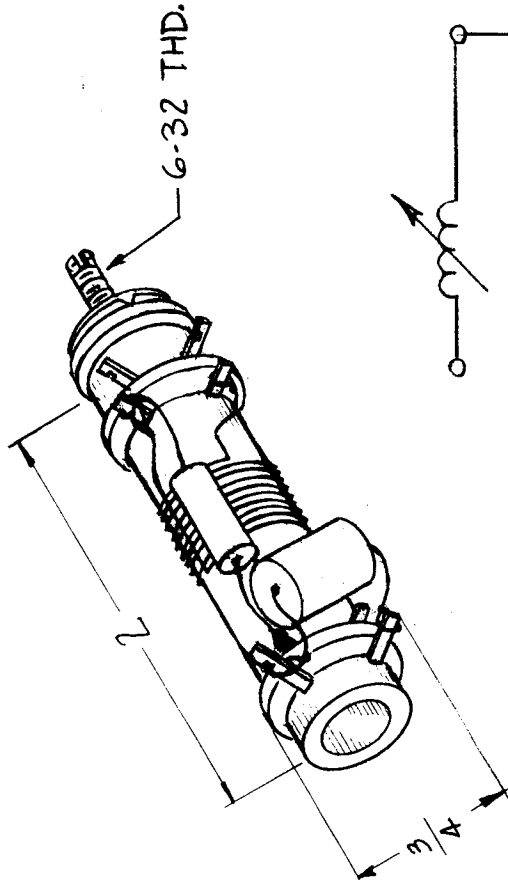
DATE: 9-1-64
 CH. NO. 0
 DRAFTS A.M.
 CHECKER @
 SCALE: 2A-2468
 MAXIMUM ALLOWABLE TOLERANCES HAVE BEEN DETERMINED AND ANY DEVIATIONS WILL BE CAUSE FOR REJECTION.
 REMOVE ALL BURRS AND SHARP EDGES

REQ. ITEM	PART NO.	GELLMAN DESCRIPTION	SYMBOL
	//	THE TECHNICAL MATERIEL CORP.	
	STOCK SIZE	MAMARONECK, NEW YORK	
		COIL, R.F., TUNED ASSEMBLY	
	MATERIAL		
	#	G. J. [Signature]	
	TYPE & TEMPER	DRAWN	CHECKED
	HEAT TREAT. SPEC.		
	FINISH & SPEC. NO.	ELEC. DES. APP. MECH. DES. APP.	FINAL APPROVAL
			AC-153

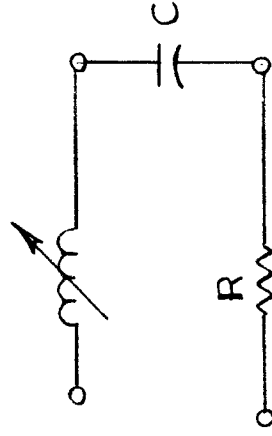
THE CONTENTS OF THIS DRAWING ARE THE EXCLUSIVE PROPERTY OF THE TECHNICAL MATERIEL CORP. ITS UNAUTHORIZED USE OR REPRODUCTION IN WHOLE OR IN PART IS STRICTLY FORBIDDEN.

REQ. PER UNIT	MODEL	USED ON ASSY. NO.	DATE
1	GPR-92		6-8-62

AC-154	0
SYMBOL	FUNCTION
L114	1ST MIXER BANDS



SPECIFICATIONS
 TURNS: 10 1/4
 C: 5F
 R: 15000Ω
 FORM MATERIAL: STEATITE
 FREQUENCY: 7.9MC



SCHMATIC

REQ. ITEM	PART NO.	GELLMAN	DESCRIPTION	SYMBOL		
	//		THE TECHNICAL MATERIEL CORP.			
	STOCK SIZE		MAMARONECK, NEW YORK			
	//		COIL, R.F. TUNED ASSEMBLY			
	MATERIAL					
	//	<i>by [signature]</i>				
TYPE & TEMPER	HEAT TREAT. SPEC.	DRAWN	CHECKED	FINAL APPROVAL		
//	//	<i>[signature]</i>	<i>MP</i>	AC-154		
	FINISH & SPEC. NO.	ELEC. DES. APP.	MECH. DES. APP.			
SYM	DESCRIPTION	DATE	CH. NO.	DRAFTS	CHECKER	ENG. APP.
0	ORIGINAL RELEASE FOR PRODUCTION	9.1.64	2	A.M.	<i>[signature]</i>	
	UNLESS OTHERWISE SPECIFIED:	SCALE: 2A-2474				
	DIMENSIONS ARE IN INCHES	MAXIMUM ALLOWABLE TOLERANCES HAVE BEEN DETERMINED AND ANY DEVIATIONS WILL BE CAUSE FOR REJECTION.				
	TOLERANCES ON	REMOVE ALL BURRS AND SHARP EDGES				
	FRAC. ± 1/4	DEC. ± .005 ANGLES ± 1/2°				

THE CONTENTS OF THIS DRAWING ARE THE EXCLUSIVE PROPERTY OF THE TECHNICAL MATERIEL CORP. ITS UNAUTHORIZED USE OR REPRODUCTION IN WHOLE OR IN PART IS STRICTLY FORBIDDEN.

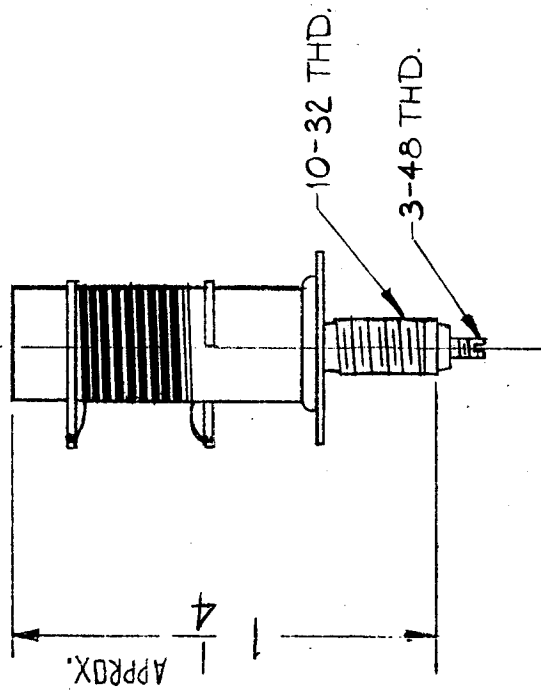
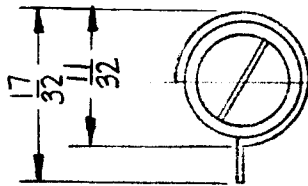
REQ. PER UNIT
4

MODEL
HFR-1/T

USED ON
ASSY. NO.

DATE
6-11-62

AC 164 A



MODEL	REQ	FUNCTION	FREQ (MC)	SYMBOL
HFR-1	4	BAND 1 RF STAGE 1, 2, 3A	2-3	L1001, L1005, L1007, L1009

ELECTRICAL SPECS:

TEST FREQ. - 25 MC
MAX IND. - 4.25 μ H (REF.)
MIN IND. - 1.95 μ H (REF.)
Q - 45 MIN @ MIN IND.

MECHANICAL SPECIFICATIONS

COIL RF TUNED.

WINDING DATA: TYPE SINGLE LAYER,
NO. OF TURNS, 20

COIL FORM DATA: MATERIAL=STEATITE, HOLLOW.
CORE DATA: QUANTITY=1 MATL=POWDERED IRON,
ADJUSTABLE.
TERMINAL DATA: QUANTITY=2 RING TERMINALS

SCHEMATIC



SYM	A	DESCRIPTION	ELECT. SPECS. REVISED	DATE	10-3-64	16958	DRAFTS	CHECKER	ENG. APP.
UNLESS OTHERWISE SPECIFIED:		MAXIMUM ALLOWABLE TOLERANCES HAVE BEEN DETERMINED AND ANY DEVIATIONS WILL BE CAUSE FOR REJECTION. REMOVE ALL BURRS AND SHARP EDGES.							
DIMENSIONS ARE IN INCHES		SCALE: A-2492							
TOLERANCES ON		FRAC. $\pm 1/64$ DEC. $\pm .005$ ANGLES $\pm 1/2^\circ$							

REQ. ITEM	PART NO.	ANGER	DESCRIPTION	SYMBOL
			THE TECHNICAL MATERIEL CORP. MAMARONECK, NEW YORK	
			COIL, RF, TUNED	
		G.D.L.	FILE	BP
		J. ANGER	CHECKED	FINAL APPROVAL
			DRAWN	
			ELEC. DES. APP.	
			MECH. DES. APP.	
			FINISH & SPEC. NO.	AC 164 A

THE CONTENTS OF THIS DRAWING ARE THE EXCLUSIVE PROPERTY OF THE TECHNICAL MATERIEL CORP. ITS UNAUTHORIZED USE OR REPRODUCTION IN WHOLE OR IN PART IS STRICTLY FORBIDDEN.

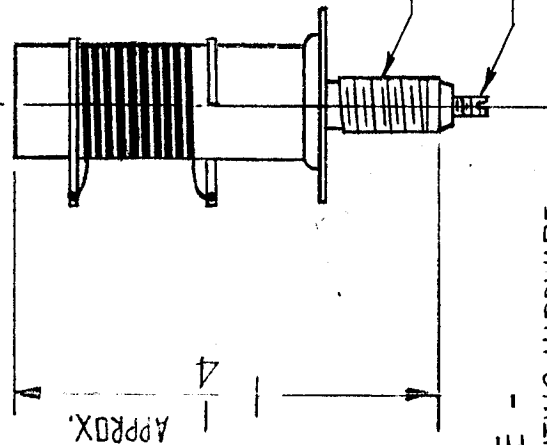
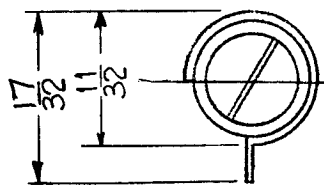
REQ. PER UNIT
5

MODEL
HFR-1/T

USED ON
ASSY. NO.

DATE
6-11-62

AC 165 A



NOTE -
MOUNTING HARDWARE
SUPPLIED BY MFG

MODEL	REQ	FUNCTION	FREQ(MC)	SYMBOL
HFR-1	3	BAND*2-3,4RF	3-4	L1015,17,19
HFR-1	1	BAND*4-1RF	6-8	L1028
HFR-1	1	BAND*5-1RF	8-12	L1033

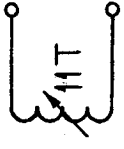
ELECTRICAL SPECIFICATIONS

TEST FREQ - 25 MC
MAX. IND - 1.3 μH (REF.)
MIN. IND - 0.6 μH (REF.)
Q - 70 MIN @ MIN L

MECHANICAL SPECIFICATIONS

COIL FORM CERAMIC (STUD MTG)
11 TURNS
AWG #24 MAGNET WIRE

SCHEMATIC



REQ. ITEM	PART NO.	ANGER	DESCRIPTION	SYMBOL
#	#		THE TECHNICAL MATERIEL CORP. MAMARONECK, NEW YORK	
#	#		COIL, RF, TUNED	
#	#		RUZZO @	
#	#		DRAWN	
#	#		J. ANGER	
#	#		CHECKED	
#	#		FINAL APPROVAL	
#	#		ELEC. SPEC. NO.	
#	#		FINISH & SPEC. NO.	

REQ. ITEM	PART NO.	ANGER	DESCRIPTION	SYMBOL
#	#		THE TECHNICAL MATERIEL CORP. MAMARONECK, NEW YORK	
#	#		COIL, RF, TUNED	
#	#		RUZZO @	
#	#		DRAWN	
#	#		J. ANGER	
#	#		CHECKED	
#	#		FINAL APPROVAL	
#	#		ELEC. SPEC. NO.	
#	#		FINISH & SPEC. NO.	

SCALE: 1A2493
MAXIMUM ALLOWABLE TOLERANCES HAVE BEEN DETERMINED AND ANY DEVIATIONS WILL BE CAUSE FOR REJECTION. REMOVE ALL BURRS AND CHAMP EDGES

UNLESS OTHERWISE SPECIFIED:
DIMENSIONS ARE IN INCHES
TOLERANCES ON
DIM. ± 1/64 DEC. ± .001 ANGLES ± 1/2°

DATE: 8-13-64
CH. NO. 16958
DRAFTS AM
CHECKER ENG. APP.

THE CONTENTS OF THIS DRAWING ARE THE EXCLUSIVE PROPERTY OF THE TECHNICAL MATERIEL CORP. ITS UNAUTHORIZED USE OR REPRODUCTION IN WHOLE OR IN PART IS STRICTLY FORBIDDEN.

REQ. PER UNIT

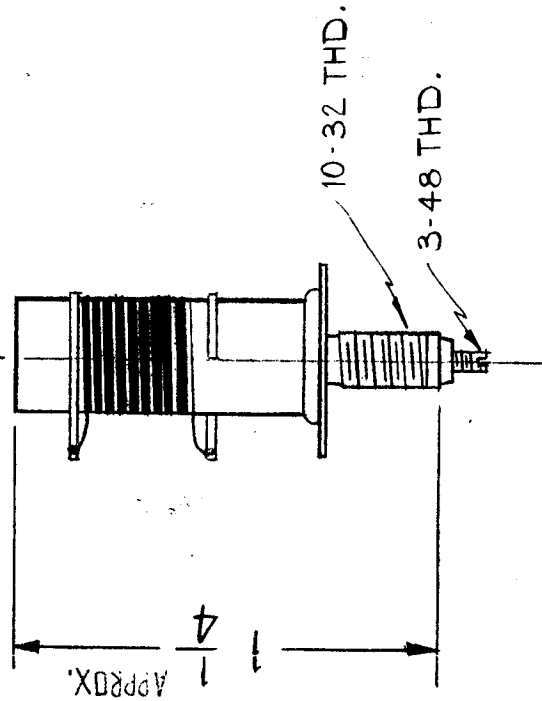
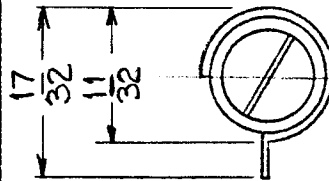
USED ON

MODEL

ASSY. NO.

DATE

AC-166



NOTE:
MOUNTING HARDWARE SUPPLIED BY MFG.

MODEL	REQ	FUNCTION	FREQ(MC)	SYMBOL
HFR-1	1	BAND*6-1RF	12-16	
HFR-1	1	BAND*7-1RF	16-24	

ELECTRICAL SPECIFICATIONS

L RANGE: 0.21 μh OR LESS TO 0.35 μh OR MORE
Q- 60 MIN. AT MIN. L, AT 25 MC

MECHANICAL SPECIFICATIONS

COIL FORM CERAMIC (STUD MTG)
5 TURNS
AWG #22 MAGNET WIRE

SCHEMATIC



REQ. ITEM	PART NO.	ANGER	DESCRIPTION	SYMBOL
			THE TECHNICAL MATERIEL CORP. MAMARONECK, NEW YORK	
			COIL, RF. TUNED	
		D.L.G.	APPROVED	
		DRAWN	CHECKED	
		V. ANGER		
				MECH. DES. APP.
				AC-166

1 MODEL HFR-1/T2 REQ DELETED
SYM. L1038 & L1043 DELETED

DATE 11-27-62
CH. NO. DRAFTS CHECKER ENG. APP.
SCALE: A 2494
MAXIMUM ALLOWABLE TOLERANCES HAVE BEEN DETERMINED AND ANY DEVIATIONS WILL BE CAUSE FOR REJECTION. REMOVE ALL BURRS AND SHARP EDGES.

UNLESS OTHERWISE SPECIFIED:
DIMENSIONS ARE IN INCHES
TOLERANCES ON
FRAC. ± 1/64 DEC. ± .005 ANGLES ± 1/2°

THE CONTENTS OF THIS DRAWING ARE THE EXCLUSIVE PROPERTY OF THE TECHNICAL MATERIEL CORP. ITS UNAUTHORIZED USE OR REPRODUCTION IN WHOLE OR IN PART IS STRICTLY FORBIDDEN.

REQ. PER UNIT: 1

MODEL: HFR-1/T

ASSY. NO.: A-2496

DATE: 6-9-62

USED ON: AC 168 A

MODEL	REQ.	FUNCTION.	FREQ(MC)	SYMBOL
HFR-1	1	BAND*2 OSC.	4.75 - 5.75	L1021

ELECTRICAL SPECIFICATIONS

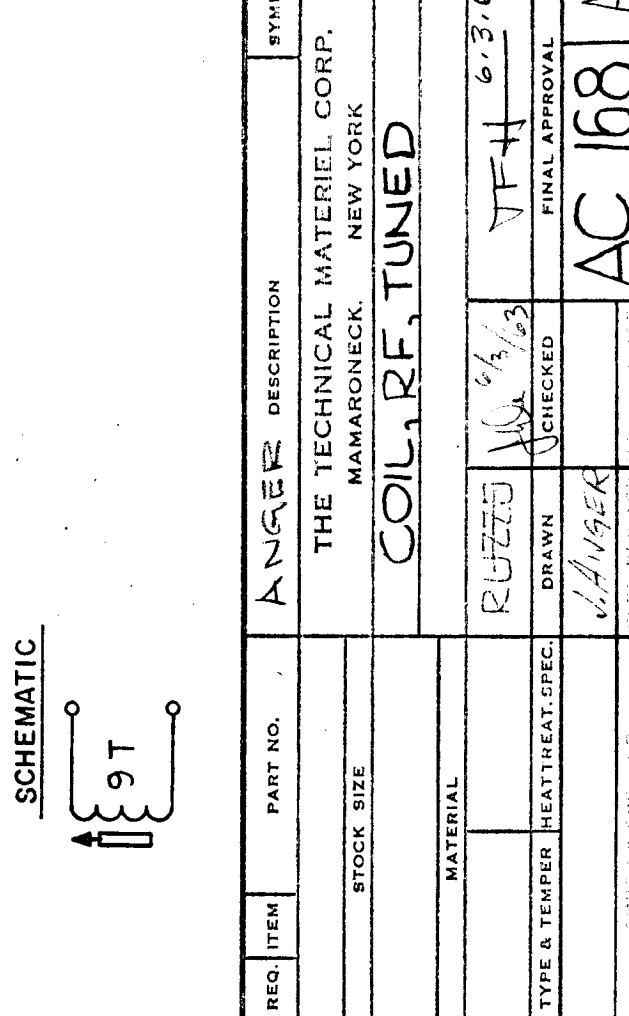
TEST FREQ. 25 MC
 MAX. IND - 0.96 MH (REF)
 MIN. IND - 0.46 MH (REF)
 Q - 80 MIN @ MIN L

MECHANICAL SPECIFICATIONS

COIL FORM CERAMIC (STUD MTD)
 9 - TURNS
 AWG #24 MAGNET WIRE



REQ. ITEM	PART NO.	ANGER DESCRIPTION	SYMBOL
		THE TECHNICAL MATERIEL CORP. MAMARONECK, NEW YORK	
		COIL, RF, TUNED	
REQ. ITEM	PART NO.	ANGER DESCRIPTION	SYMBOL
		THE TECHNICAL MATERIEL CORP. MAMARONECK, NEW YORK	
		COIL, RF, TUNED	
TYPE & TEMPER	HEATTREAT. SPEC.	CHECKED	FINAL APPROVAL
		RUZZO	VFH 6.3.63
		ANGER	AC 168 A



DESCRIPTION	DATE	CH. NO.	DRAFTS	CHECKER	ENG. APP.
A ELECT SPECS REVISED	10-3-66	16958			
UNLESS OTHERWISE SPECIFIED: DIMENSIONS ARE IN INCHES TOLERANCES ON FRAC. ± 1/64 DEC. ± .005 ANGLES ± 1/2°	SCALE:	A-2496			
MAXIMUM ALLOWABLE TOLERANCES HAVE BEEN DETERMINED AND ANY DEVIATIONS WILL BE CAUSE FOR REJECTION. REMOVE ALL BURRS AND SHARP EDGES.					

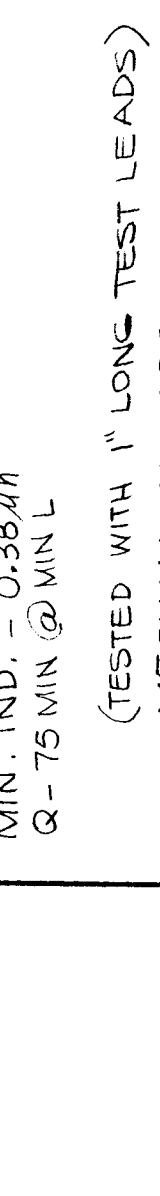
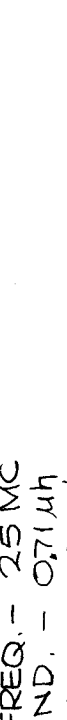
THE CONTENTS OF THIS DRAWING ARE THE EXCLUSIVE PROPERTY OF THE TECHNICAL MATERIEL CORP. ITS UNAUTHORIZED USE OR REPRODUCTION IN WHOLE OR IN PART IS STRICTLY FORBIDDEN.

REQ. PER UNIT: 3

MODEL: HFR-1/T

USED ON ASSY. NO. DATE: 6-11-61

AC-169 A



NOTE:
MOUNTING HARDWARE SUPPLIED BY MFG.

MODEL	REQ.	FUNCTION	FREQ (MC)	SYMBOL
HFR-1	1	BAND*3 OSC	5.75 - 7.75	L1053
HFR-1	1	BAND*4 OSC	7.75 - 9.75	L1054
HFR-1	1	BAND*5 OSC	9.75 - 13.75	L1055

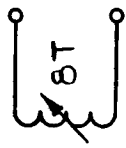
ELECTRICAL SPECIFICATIONS

TEST FREQ. - 25 MC
 MAX. IND. - 0.71 μh
 MIN. IND. - 0.38 μh
 Q - 75 MIN @ MIN L

(TESTED WITH 1" LONG TEST LEADS)
MECHANICAL SPECIFICATIONS

COIL FORM CERAMIC (STUD MTG)
 8 TURNS
 AWG #24 MAGNET WIRE

SCHEMATIC



REQ. ITEM	PART NO.	DESCRIPTION	SYMBOL
		ANGER	
STOCK SIZE		THE TECHNICAL MATERIEL CORP. MAMARONECK, NEW YORK	
MATERIAL		COIL, RF, TUNED	
TYPE & TEMPER		RUZZO	VFH 6-3-63
HEAT TREAT. SPEC.		DRAWN	FINAL APPROVAL
FINISH & SPEC. NO.		V. ANGER	AC-169 A
		ELEC. DES. APP.	MECH. DES. APP.

SYM	DESCRIPTION	DATE	CH. NO.	DRAFTS	CHECKER	ENG. APP.
A	ELECT SPECS. REVISED	10-3-66	16972			
SCALE: 1 A 2497						
UNLESS OTHERWISE SPECIFIED: DIMENSIONS ARE IN INCHES TOLERANCES ON FRAC. ± 1/64 DEC. ± .005 ANGLES ± 1/2°						
MAXIMUM ALLOWABLE TOLERANCES HAVE BEEN DETERMINED AND ANY DEVIATIONS WILL BE CAUSE FOR REJECTION. REMOVE ALL BURRS AND SHARP EDGES						

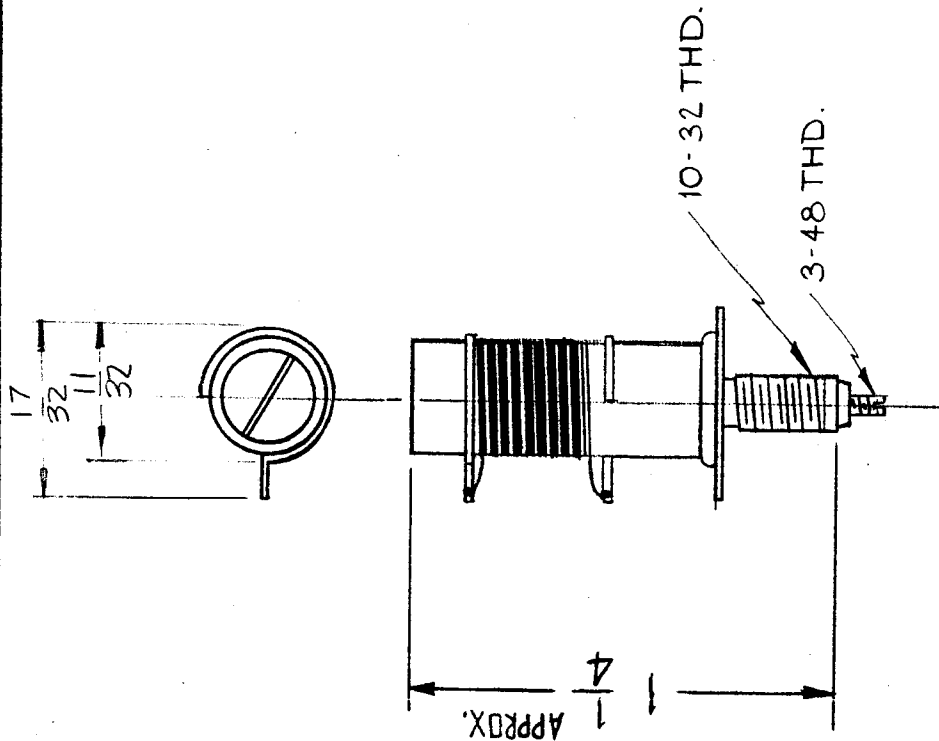
THE CONTENTS OF THIS DRAWING ARE THE EXCLUSIVE PROPERTY OF THE TECHNICAL MATERIEL CORP. ITS UNAUTHORIZED USE OR REPRODUCTION IN WHOLE OR IN PART IS STRICTLY FORBIDDEN.

REQ. PER UNIT
2

MODEL
HFR-1/T

USED ON
DATE
6-11-62

AC 170 A



NOTE:
MOUNTING HARDWARE SUPPLIED BY MFG.

MODEL	REQ.	FUNCTION	FREQ.(MC)	SYMBOL
HFR-1	1	BAND*1 OSC	3.75-4.75	L1013
HFR-1	1	BAND*2 ANT.	3-4	L1014

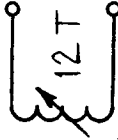
ELECTRICAL SPECIFICATIONS

TEST FREQ. - 25 MC
MAX. IND. - 1.42 μ h (REF.)
MIN. IND. - 0.96 μ h (REF.)
Q - 85 MIN @ MIN. L

MECHANICAL SPECIFICATIONS

COIL FORM CERAMIC (STUD MTG)
12 TURNS
AWG # 24 MAGNET WIRE

SCHEMATIC



REQ. ITEM	PART NO.	DESCRIPTION	SYMBOL
		ANGER	
		THE TECHNICAL MATERIEL CORP. MAMARONECK, NEW YORK	
		COIL, RF. TUNED	
		G.D.L	
		DRAWN	CHECKED
		J. ANGER	
		ELEC. DES. APP.	MECH. DES. APP.
			FINAL APPROVAL
			AC 170 A

SYM	DESCRIPTION	DATE	CH. NO.	DRAFTS	CHECKER	ENG. APP.
A	ELECT. SPECS REVISED	10-3-62	16958			
1	BAND*2 ADDED TO CHART	11-17-62				

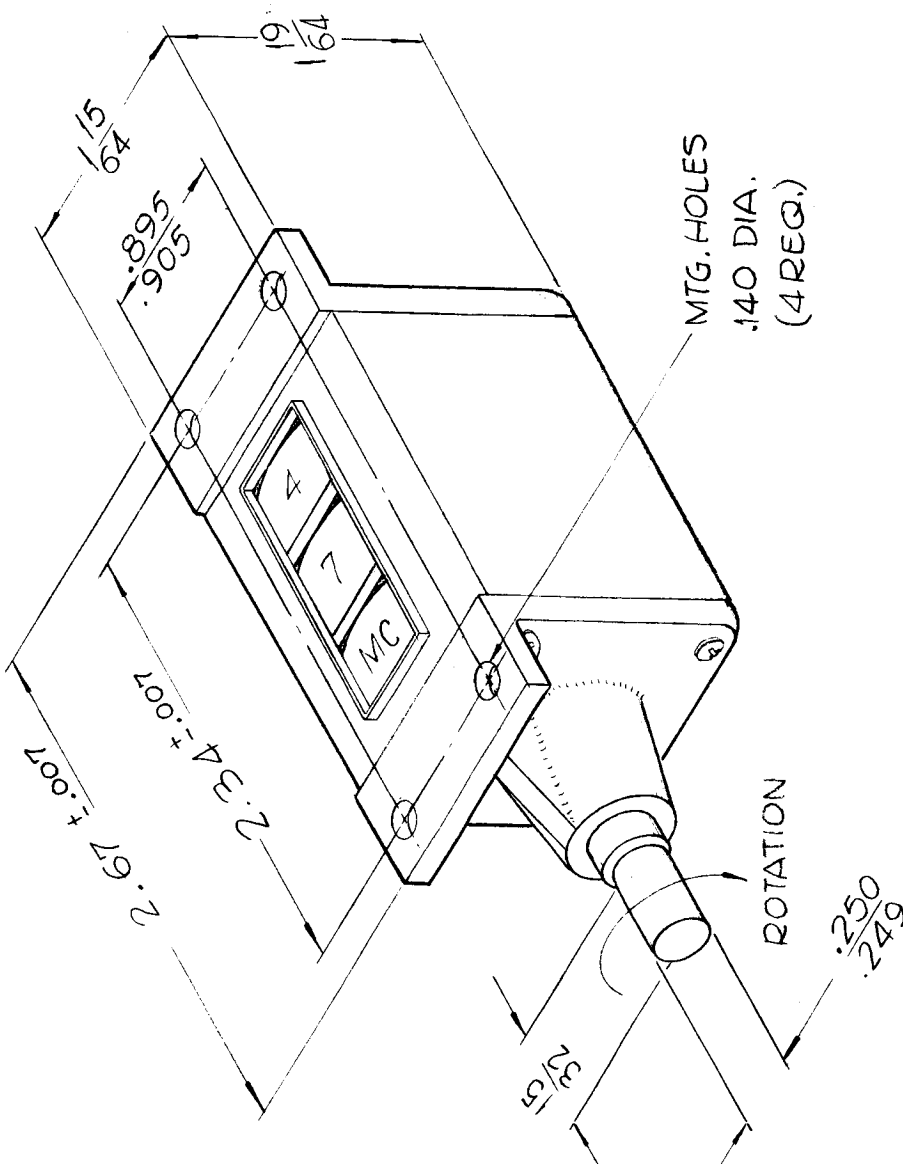
UNLESS OTHERWISE SPECIFIED:
DIMENSIONS ARE IN INCHES
TOLERANCES ON
FRAC. $\pm 1/64$ DEC $\pm .005$ ANGLES $\pm 1/2^\circ$

SCALE: A-2498

MAXIMUM ALLOWABLE TOLERANCES HAVE BEEN DETERMINED AND ANY DEVIATIONS WILL BE CAUSE FOR REJECTION REMOVE ALL BURRS AND SHARP EDGES

THE CONTENTS OF THIS DRAWING ARE THE EXCLUSIVE PROPERTY OF THE TECHNICAL MATERIEL CORP. ITS UNAUTHORIZED USE FOR REPRODUCTION IN WHOLE OR IN PART IS STRICTLY FORBIDDEN.

REQ. PER UNIT	USED ON	DATE	AC-173	B
1	MODEL	ASBY. NO.		
	GPT-200K	AX-395	2-8-63	



SPECIFICATIONS:
 PLAIN BEARING TYPE
 NON RESET
 READINGS ~
 POSITION 1~2-5
 2~5-7
 3~7-13.5
 4~13.5-22
 5~22-28

REQ. ITEM	PART NO.	F. BUDETTI	DESCRIPTION	SYMBOL
			THE TECHNICAL MATERIEL CORP. MAMARONECK. NEW YORK	
	STOCK SIZE		COUNTER, BANDSWITCH	
	MATERIAL		TT-1	
	TYPE & TEMPER	SRG	QA	
	HEAT TREAT. SPEC.		CHECKED	FINAL APPROVAL
	FINISH & SPEC. NO.		8A-3116-1	AC-173
			ELEC. DES. APP. MECH. DES. APP.	B

THE CONTENTS OF THIS DRAWING ARE THE EXCLUSIVE PROPERTY OF THE TECHNICAL MATERIEL CORP. ITS UNAUTHORIZED USE FOR REPRODUCTION IN WHOLE OR IN PART IS STRICTLY FORBIDDEN.

REQ. PER UNIT

1

USED ON

ASS'Y. NO.

AX-395

MODEL

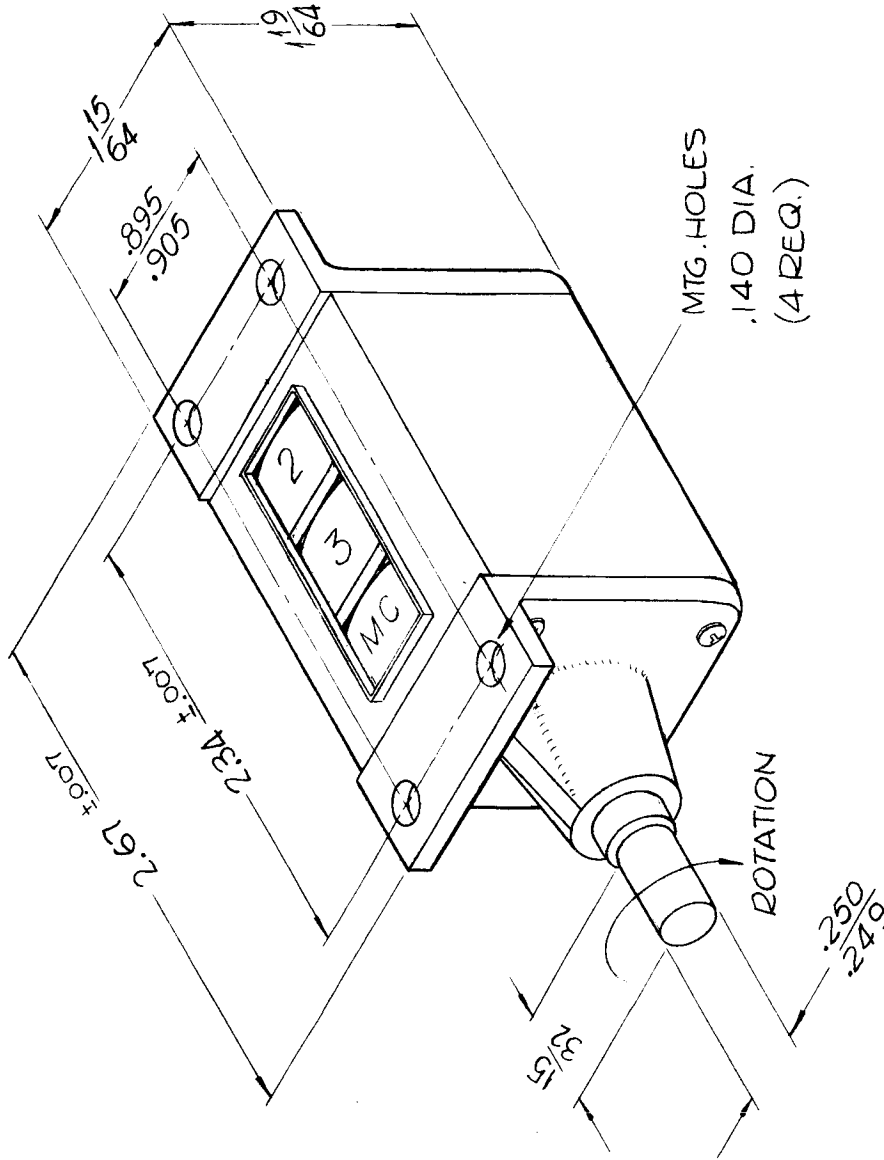
GPT-200K

DATE

2-8-63

AC-174

0



SPECIFICATIONS:

PLAIN BEARING TYPE

NON RESET

READINGS ~

POSITION 1 ~ 2-3 MC

2 ~ 3-5 MC

3 ~ 5-7 MC

4 ~ 7-14 MC

5 ~ 14-22 MC

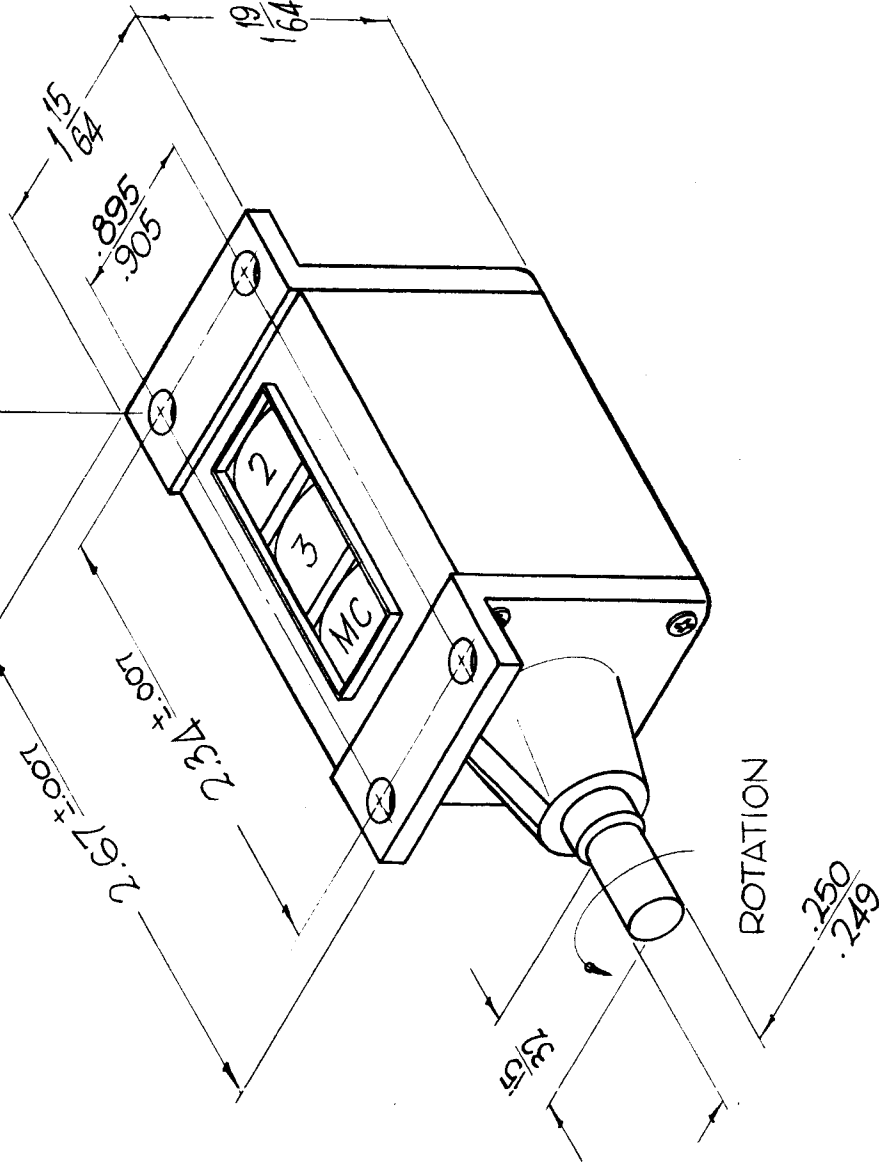
6 ~ 22-28 MC

REQ. ITEM	PART NO.	DESCRIPTION	SYMBOL
		F. BUDETTI	
		THE TECHNICAL MATERIEL CORP. MAMARONECK, NEW YORK	
		COUNTER, BANDSWITCH	
		TT-2	
		MATERIAL	
		STOCK SIZE	
		TYPE & TEMPER	
		HEAT TREAT. SPEC.	
		FINISH & SPEC. NO.	
		REQ. CHECKER	
		DRAFTS	
		CH. NO.	
		DATE	
		DESCRIPTION	
		UNLESS OTHERWISE SPECIFIED	
		DIMENSIONS ARE IN INCHES AND INCLUDE	
		CHEMICALLY APPLIED OR PLATED FINISHES	
		DECIMALS	
		.X ± .05	
		.XX ± .01	
		.XXX ± .005	
		FRACTIONS	
		± 1/64	
		ANGLES	
		± 0° 30'	
		SCALE	
		CODE	
		8A-3116-2	
		DATE	
		5.18.64	
		ASB	
		CHKD	
		DRWN	
		SRG	
		CHKD	
		AC	
		FINAL APPROVAL	
		AC-174	
		0	

USED ON
 ASSY. NO. GPT40K04
 MODEL
 DATE 11-5-63

AC-175 B

④ .140 DIA. MOUNTING HOLES



SPECIFICATIONS:
 PLAIN BEARING TYPE
 NON RESET
 READINGS, AS FOLLOWS:
 POSITION NO. 1- 2-3 MC
 2- 3-4 MC
 3- 4-5 MC
 4- 5-7 MC
 5- 7-13 MC
 6- 13-18 MC
 7- 18-24 MC
 8- SEE CHART

TMC PT. NO.	POS. 8	ASSY. NO.
AC 175	24-28 MC	A 3116-3
AC 175-2	24-30 MC	A 3116-11

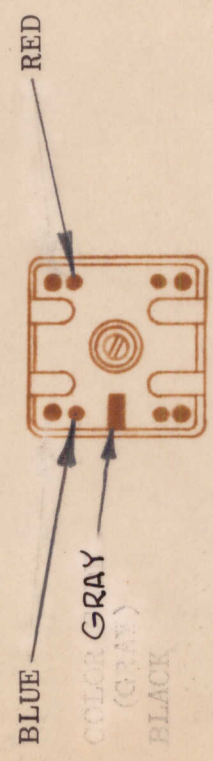
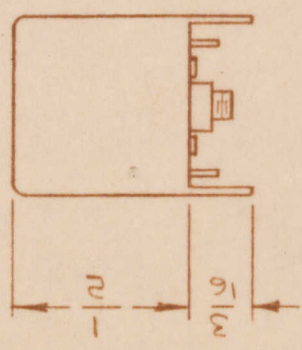
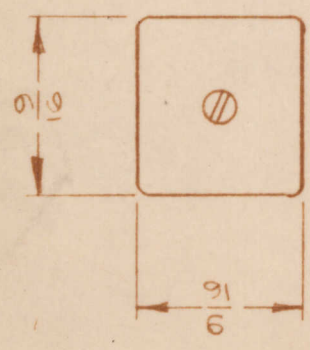
REQ. ITEM	PART NO.	DESCRIPTION	SYMBOL
B	TMC P/N CHART ADDED 12/6/67	F. BUDETTI	
A	ROTATION CHG. FR. CW TO C.C.W. 2-16-65	THE TECHNICAL MATERIEL CORP. MAMARONECK, NEW YORK	
O	ORIGINAL RELEASE FOR PRODUCTION 3-3-64	COUNTER, BANDSWITCH	
SYM	DESCRIPTION	CHECKER	ENG. APP.
	UNLESS OTHERWISE SPECIFIED DIMENSIONS ARE IN INCHES AND INCLUDE CHEMICALLY APPLIED OR PLATED FINISHES		
	TOLERANCES		
	DECIMALS		
	FRACTIONS		
	± .05		
	.XX ± .01		
	.XXX ± .005		
	± 1/64		
	ANGLES		
	± 0° 30'		
	SCALE		
	DATE		
	CH. NO.		
	DRAFTS CHECKER		
	ENG. APP.		
	MATERIAL		
	STOCK SIZE		
	TYPE & TEMPER		
	HEAT TREAT. SPEC.		
	FINISH & SPEC. NO.		
	DRAWN		
	CHECKED		
	FINAL APPROVAL		
	MECH. DES. APP.		
	ELEC. DES. APP.		

John C. Biele
 9/28
 3/9/67
 AC-175 B

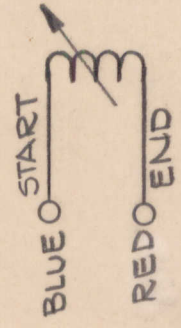
REQ. PER UNIT	USED ON	DATE
3	AC177	3-25-65
MODEL	ASSY. NO.	
VLRB-1	A3662	

ELECTRICAL SPECIFICATIONS
 (With slug inserted)
 OPERATING FREQUENCY:
 INDUCTANCE: @ 790 KC
 PRIMARY: 140 μ h \pm 5 μ h
 "Q" (PRIMARY) @ 180 KC : 60 MIN.

MECHANICAL SPECIFICATIONS
 TURNS
 PRIMARY: 100
 COLOR CODE: GRAY
 CASE: COPPER CAN
 CASE FINISH: TIN-PLATED
 QUANTITY TERM.: 4
 MATERIAL:
 CORE & SLUG: POWDERED IRON



SCHEMATIC DIAGRAM
 + INDICATES START OF WINDING



REQ. ITEM	PART NO.	DESCRIPTION	SYMBOL
4		THE TECHNICAL MATERIEL CORP. MAMARONECK. NEW YORK	
	STOCK SIZE	COIL, RF, ADJUSTABLE	
	MATERIAL		
	TYPE & TEMPER		
	HEAT TREAT. SPEC.		
	FINISH & SPEC. NO.		
	DATE	CHECKER	ENG. APP.
	4-7-65	H.A.	
	3-25-65	H.A.	
	SCALE		
	CODE		
	A		
	TOLERANCES		
	FRACTIONS		
	DECIMALS		
	UNLESS OTHERWISE SPECIFIED		
	DIMENSIONS ARE IN INCHES AND INCLUDE		
	CHEMICALLY APPLIED OR PLATED FINISHES		
	± 1/64		
	± .01		
	± .005		
	ANGLES		
	± 0° 30'		
	2A3797		
	FINAL APPROVAL		
	3-29-65		
	CHECKED		
	DRAWN		
	H. Austin		
	MECH. DES. APP.		
	ELEC. DES. APP.		
	AC177		

REQ. PER UNIT	USED ON	DATE
3	MODEL VLRB-1	3.25.65
	ASS'Y. NO.	
	A 3662	

AC178

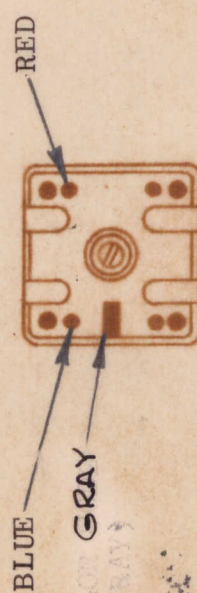
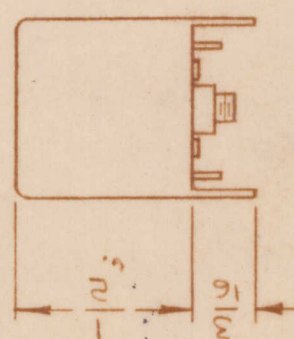
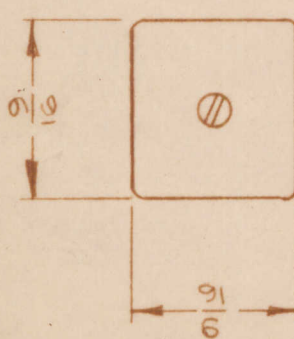
ELECTRICAL SPECIFICATIONS
(WITH SLUG INSERTED)

OPERATING FREQUENCY:
INDUCTANCE: @ 2.5 MC
PRIMARY: 57 μh ± 1 μh
"Q" (PRIMARY) @ 330 KC: 65 MIN.

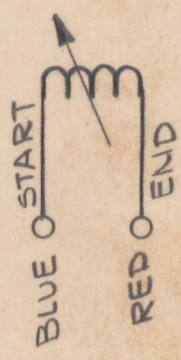
MECHANICAL SPECIFICATIONS

TURNS
PRIMARY: 66

COLOR CODE: GRAY
CASE: COPPER CAN
CASE FINISH: TIN PLATED
QUANTITY TERM.: 4
MATERIAL:
CORE & SLUG: POWDERED IRON



SCHEMATIC DIAGRAM
4 INDICATES NUMBER OF WINDING



SYM	DESCRIPTION	DATE	CH. NO.	DRAFTS	CHECKER	ENG. APP.
Ø	ORIGINAL RELEASE FOR PRODUCTION	4.7.65	Ø	24	WLA	
X	EXPER. RELEASE	3.25.65	X			

UNLESS OTHERWISE SPECIFIED DIMENSIONS ARE IN INCHES AND INCLUDE CHEMICALLY APPLIED OR PLATED FINISHES

TOLERANCES

FRACTIONS ± 1/64 ANGLES ± 0° 30'

DECIMALS X ± .05 XX ± .01 XXX ± .005

SCALE

CODE A

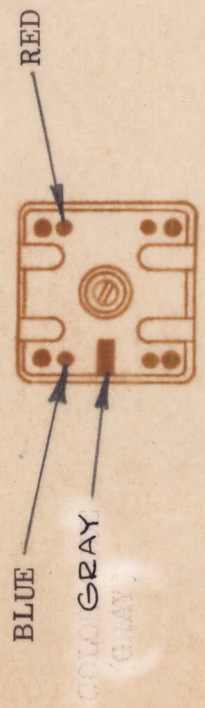
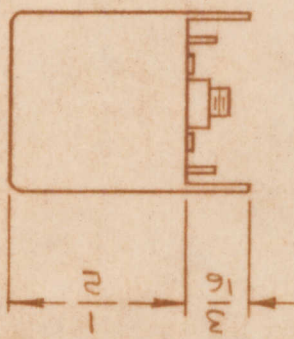
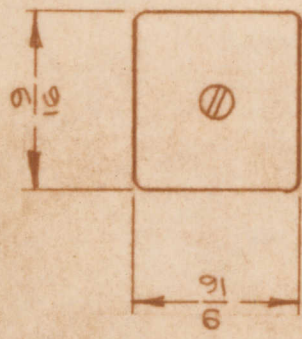
2A3798

REQ. ITEM	PART NO.	DESCRIPTION	SYMBOL
		THE TECHNICAL MATERIEL CORP. MAMARONECK. NEW YORK	
	STOCK SIZE	COIL, RF, ADJUSTABLE	
	MATERIAL		
	TYPE & TEMPER	DRAWN	
	HEAT TREAT. SPEC.	H. Aust. W 3.29.65	
	FINISH & SPEC. NO.	CHECKED	FINAL APPROVAL
		9AB	AC178
			MECH. DES. APP.

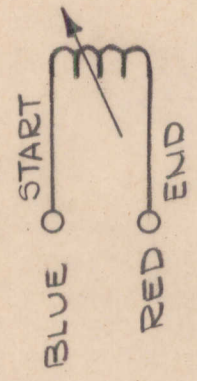
REQ. PER UNIT	MODEL	USED ON	SYMBOL
3	VLRB-1	AC179	∅
	ASSY. NO.	DATE	
	A 3662	3-25-65	

ELECTRICAL SPECIFICATIONS
(WITH SLUG INSERTED)
OPERATING FREQUENCY:
INDUCTANCE: @ 2.5 MC
PRIMARY: $19\mu h \pm 1\mu h$
"Q" (PRIMARY) @ 600 KC: 80 MIN.

MECHANICAL SPECIFICATIONS
TURNS
PRIMARY: 37
COLOR CODE: GRAY
CASE: COPPER CAN
CASE FINISH: TIN PLATED
QUANTITY TERM.: 4
MATERIAL:
CORE & SLUG: POWDERED IRON



SCHEMATIC DIAGRAM
INDICATES START OF WINDING



REQ. ITEM	PART NO.	DESCRIPTION	SYMBOL
		THE TECHNICAL MATERIEL CORP. MAMARONECK. NEW YORK	∅
	STOCK SIZE	COIL, RF, ADJUSTABLE	
	MATERIAL		
	TYPE & TEMPER	CHECKED	
	HEAT TREAT. SPEC	DRAWN	
	FINISH & SPEC. NO.	ELEC. DES. APP.	
		MECH. DES. APP.	
		FINAL APPROVAL	
		AC179	∅

ORIGINAL RELEASE FOR PRODUCTION
EXPER. RELEASE

UNLESS OTHERWISE SPECIFIED
DIMENSIONS ARE IN INCHES AND INCLUDE
CHEMICALLY APPLIED OR PLATED FINISHES

FRACTIONS
X ± .05
XX ± .01
XXX ± .005

TOLERANCES
± 1/64
ANGLES
± 0° 30'

DATE 4-2-65
DATE 11-2-64
SCALE
CHECKER
ENG. APP.
DRAFTS
CH. NO.
X
HWA
2A3799
CODE
A

REQ. PER UNIT	MODEL	USED ON ASSY. NO.	DATE
	VLRB-1	A3653	5-19-65

AC181 \emptyset

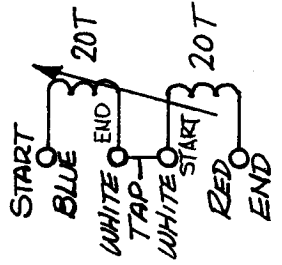
ELECTRICAL SPECS.
(WITH SLUG INSERTED)
OPERATING FREQUENCY:
INDUCTANCE @ 790KCS
PRIMARY: $253 \mu h \pm 2 \mu h$
SECONDARY: NOT RATED
"Q" (PRIMARY) @ 100KCS: $> .155$

MECHANICAL SPEC.
TURNS
PRIMARY: 20 BIFILAR
SECONDARY: 4

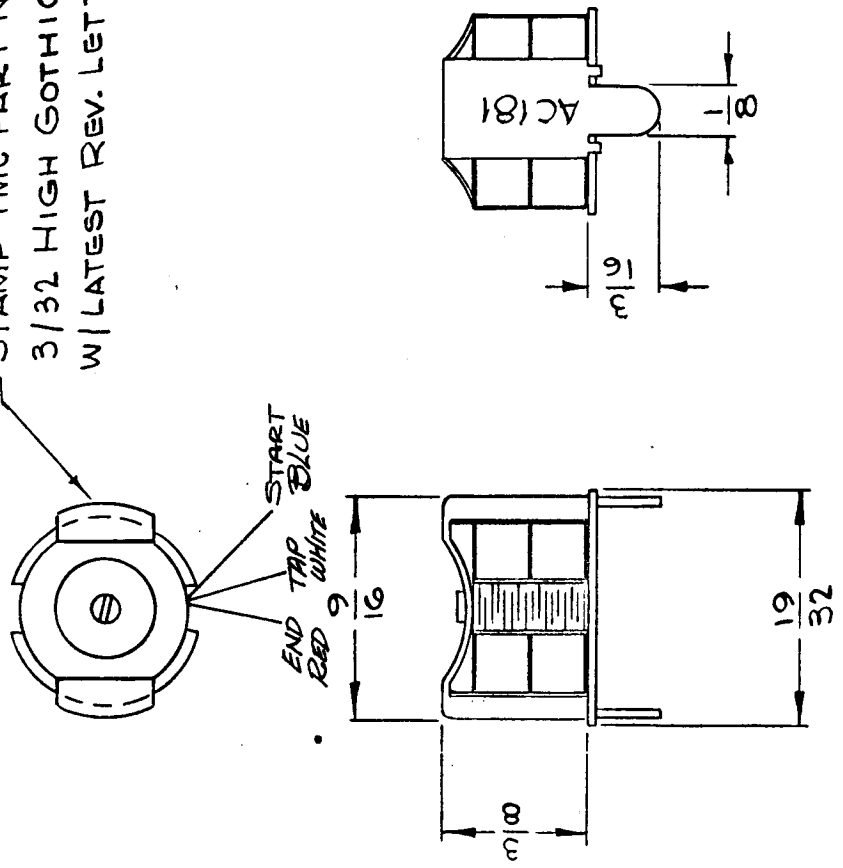
RETAINER, BOTTOM: BRASS CAD PLATED
RETAINER, TOP: NICKEL SILVER H/H

MATERIAL:
CORE & SLUG: POWDERED IRON

SCHEMATIC DIAGRAM



STAMP TMC PART NO.
3/32 HIGH GOTHIC
W/LATEST REV. LETTER



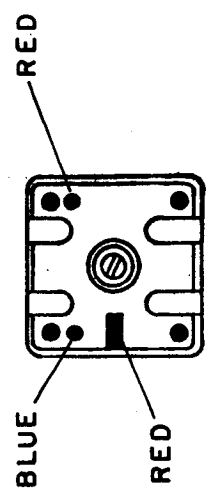
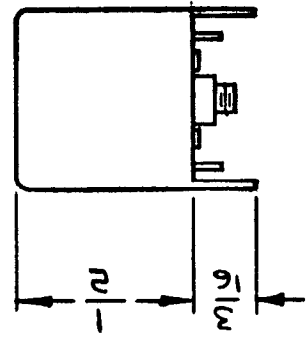
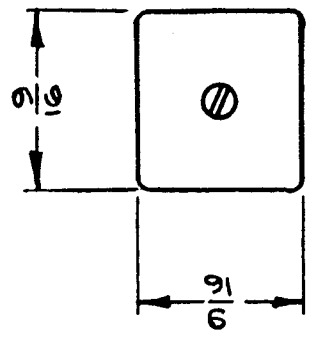
REQ. ITEM	PART NO.	DESCRIPTION	SYMBOL
		POSE	
		THE TECHNICAL MATERIEL CORP. MAMARONECK.	
		TRANSFORMER, RF, ADJUSTABLE	
		MATERIAL	
		STOCK SIZE	
		HEAT TREAT. SPEC.	
		FINISH & SPEC. NO.	
		TYPE & TEMPER	
		CHECKED	
		DRAWN	
		FINAL APPROVAL	
		MECH. DES. APP.	
		ELEC. DES. APP.	

SYM	DESCRIPTION	DATE	CH. NO.	DRAFTS	CHECKER	ENG. APP.
\emptyset	ORIGINAL RELEASE FOR PRODUCTION	5/19/65	44	466		

UNLESS OTHERWISE SPECIFIED DIMENSIONS ARE IN INCHES AND INCLUDE CHEMICALLY APPLIED OR PLATED FINISHES	SCALE	CODE
DECIMALS .X $\pm .05$.XX $\pm .01$.XXX $\pm .005$		A
FRACTIONS $\pm 1/64$ ANGLES $\pm 0^{\circ} 30'$		2-A-3888

RE. PER UNIT 1	USED ON	
	MODEL VLRB-1	DATE 4-12-65

AC185 Ø



ELECTRICAL SPECS.
(WITH SLUG INSERTED)

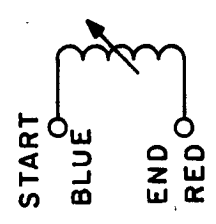
OPERATING FREQUENCY:
INDUCTANCE @ 7.9 MC
PRIMARY: 6.24 UH ± .5 UH
SECONDARY: NOT RATED
"Q" (PRIMARY) @ 6 MC : > 50

MECHANICAL SPEC.

TURNS

PRIMARY: 27
SECONDARY: —
COLOR CODE: RED
CASE: COPPER CAN
CASE FINISH: TIN-PLATED
QUANTITY TERM: 4
MATERIAL:
CORE & SLUG: POWDERED IRON

SCHEMATIC



REQ. ITEM	PART NO.	DESCRIPTION	SYMBOL
—	—	THE TECHNICAL MATERIEL CORP. MAMARONECK. NEW YORK	
—	—	COIL, RF, ADJUSTABLE	
—	—	MATERIAL	
—	—	TYPE & TEMPER	
—	—	HEAT TREAT. SPEC	
—	—	CHECKED	
—	—	DRAWN	
—	—	FINISH & SPEC. NO.	
—	—	ELEC. DES. APP.	
—	—	MECH. DES. APP.	
—	—	FINAL APPROVAL	
—	—	AC185 Ø	

ORIGINAL RELEASE FOR PRODUCTION 4/30/65

EXPER. RELEASE 4/12/65

SCALE

UNLESS OTHERWISE SPECIFIED DIMENSIONS ARE IN INCHES AND INCLUDE CHEMICALLY APPLIED OR PLATED FINISHES

FRACTIONS ± 1/64 ANGLES ± 0° 30' TOLERANCES ± .005

CODE A 2-A3901

DATE 4/12/65

CHECKER

DRAFTS

CH. NO.

ENG. APP.

Q.P. G. Leman

Mr. M. M. Miley

REQ. PER UNIT 1	USED ON	
	MODEL VLRB-1	DATE 3-26-65

AC189 A

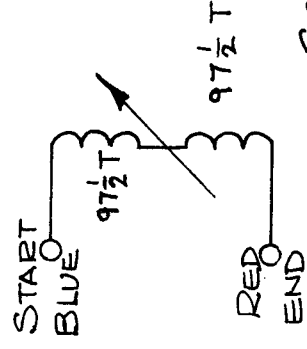
ELECTRICAL SPECS.
(WITH SLUG INSERTED)

OPERATING FREQUENCY:
INDUCTANCE @ 250 KCS
PRIMARY: $46\text{mh} \pm .02\text{mh}$
SECONDARY: 1H
"Q" (PRIMARY) @ 250 KCS: > 250

MECHANICAL SPEC.

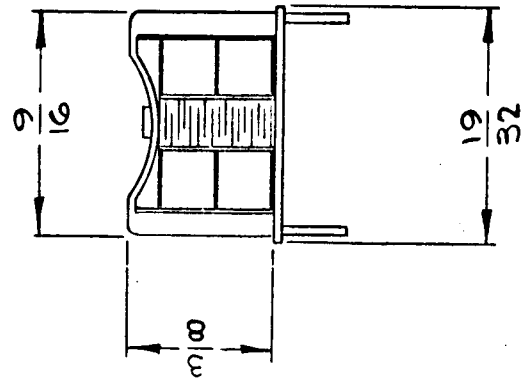
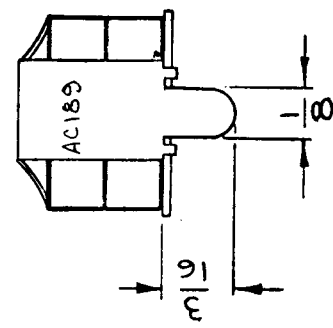
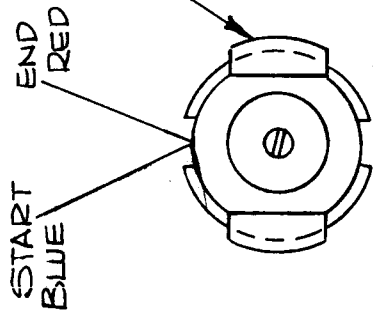
TURNS
PRIMARY: 195
SECONDARY: $1\frac{1}{2}$
RETAINER, BOTTOM: BRASS CAP PLATED
RETAINER, TOP: NICKEL SILVER H/H

MATERIAL:
CORE & SLUG: POWDERED IRON



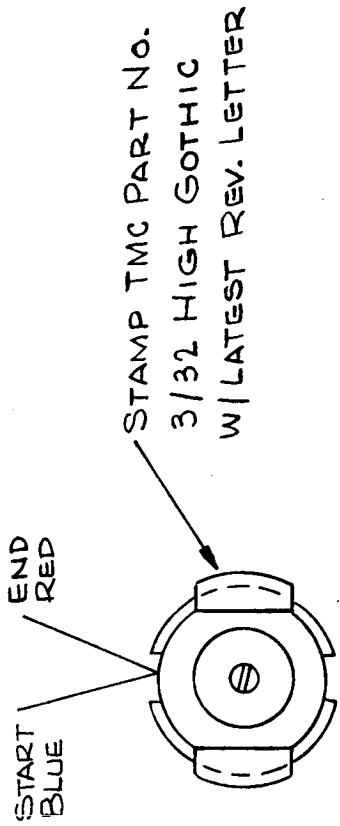
SCHEMATIC DIAGRAM

STAMP TMC PART No.
3/32 HIGH GOTHIC
W/LATEST REV. LETTER



REQ. ITEM	PART NO.	DESCRIPTION	SYMBOL
		THE TECHNICAL MATERIEL CORP. MAMARONECK. NEW YORK	
		COIL, RF, ADJUSTABLE	
		MATERIAL	
		HEAT TREAT. SPEC.	
		CHECKER	
		DATE	
		SCALE	
		CH. NO.	
		DRAFTS	
		CHECKER	
		ENG. APP.	
		CODE	
		TOLERANCES	
		FRACTIONS	
		DECIMALS	
		ANGLES	
		MECH. DES. APP.	
		FINISH & SPEC. NO.	
		DRAWN	
		CHECKED	
		FINAL APPROVAL	
		AC189	

REQ. PER UNIT 1	MODEL VLRB-1	USED ON ASSY. NO. A 3681	DATE 3-25-65
	AC191 A		



ELECTRICAL SPECS.
(WITH SLUG INSERTED)

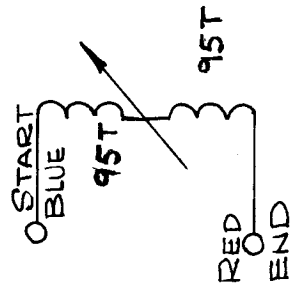
OPERATING FREQUENCY:
INDUCTANCE @ 250 KCS
PRIMARY: 3.17 mh ± .5mh
SECONDARY: ---#

"Q" (PRIMARY) @ 200 KCS: > 250

MECHANICAL SPEC.

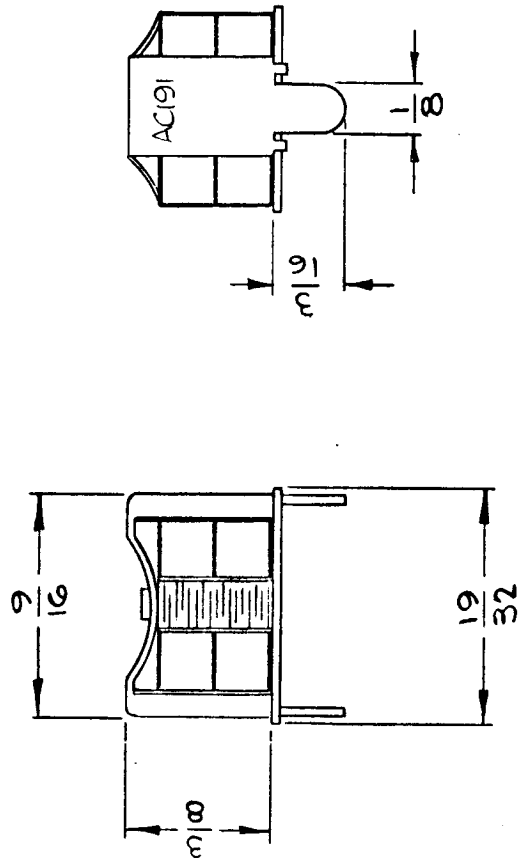
TURNS
PRIMARY: 190
SECONDARY: ---#

RETAINER, BOTTOM: BRASS CAD PLATED
RETAINER, TOP: NICKEL SILVER H/H
MATERIAL:
CORE & SLUG: POWDERED IRON



SCHEMATIC DIAGRAM

STAMP TMC PART No.
3/32 HIGH GOTHIC
W/LATEST REV. LETTER



REQ. ITEM	PART NO.	DESCRIPTION	SYMBOL
---	---	THE TECHNICAL MATERIEL CORP. MAMARONECK. NEW YORK	
---	---	COIL, RF, ADJUSTABLE	
---	---	MATERIAL	
---	---	HEAT TREAT. SPEC	
---	---	FINISH & SPEC. NO.	
---	---	TYPE & TEMPER	
---	---	DRAWN	
---	---	CHECKED	
---	---	FINAL APPROVAL	
---	---	MECH. DES. APP.	
---	---	ELEC. DES. APP.	
---	---	MECH. DES. APP.	
---	---	MECH. DES. APP.	

ELEC. SPEC. PRI. W/L 3.92 MAX. MECH
SPEC. PRI. W/L AS 200. SCHEMATIC T. W/RS 100

DATE: 4-7-65
CH. NO.: ---#
DRAFTS: ---#
CHECKER: ---#
ENG. APP.: ---#

SCALE: ---#

UNLESS OTHERWISE SPECIFIED
DIMENSIONS ARE IN INCHES AND INCLUDE
CHEMICALLY APPLIED OR PLATED FINISHES

DECIMALS
X ± .05
XX ± .01
XXX ± .005

FRACTIONS
± 1/64
ANGLES
± 0° 30'

ORIGINAL RELEASE FOR PRODUCTION

DATE: 4-7-65
CH. NO.: ---#
DRAFTS: ---#
CHECKER: ---#
ENG. APP.: ---#

SCALE: ---#

UNLESS OTHERWISE SPECIFIED
DIMENSIONS ARE IN INCHES AND INCLUDE
CHEMICALLY APPLIED OR PLATED FINISHES

DECIMALS
X ± .05
XX ± .01
XXX ± .005

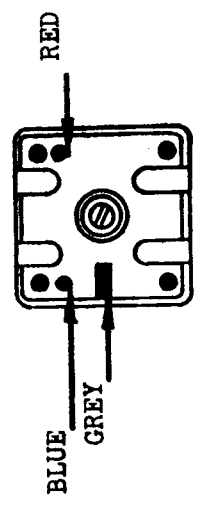
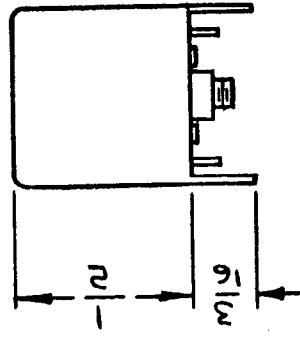
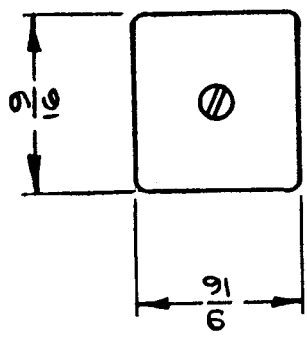
FRACTIONS
± 1/64
ANGLES
± 0° 30'

TOLERANCES

CODE: A

2-A-3919

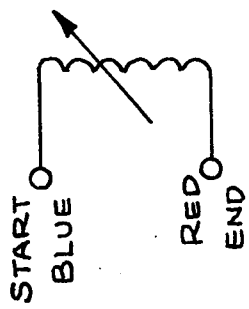
REQ. PER UNIT	USED ON		DATE
	MODEL	ASSY. NO.	
1	VLRB-1	A-3681	3-18-65



ELECTRICAL SPECS.
(WITH SLUG INSERTED)

OPERATING FREQUENCY:
INDUCTANCE @ 790 KCS
PRIMARY: 590 μ h \pm 10 μ h
SECONDARY: NOT RATED
"Q" (PRIMARY) @ 150 KCS: >60

MECHANICAL SPEC.
TURNS
PRIMARY: 232
SECONDARY: *X*
COLOR CODE: GREY
CASE: COPPER CAN
CASE FINISH: TIN-PLATED
QUANTITY TERM: -4
MATERIAL:
CORE & SLUG: POWDERED IRON



SCHEMATIC DIAGRAM

REQ. ITEM	PART NO.	DESCRIPTION	SYMBOL
<i>inf</i>		THE TECHNICAL MATERIEL CORP. MAMARONECK. NEW YORK	\emptyset
STOCK SIZE		COIL, RF, ADJUSTABLE	
MATERIAL			
<i>inf</i>		<i>H. Austin</i> DRAWN 3-29-65	<i>Final Approval</i>
TYPE & TEMPER	HEAT TREAT. SPEC.	CHECKED	AC-192
FINISH & SPEC. NO.	ELEC. DES. APP.	MECH. DES. APP.	

ORIGINAL RELEASE FOR PRODUCTION

EXPER. RELEASE

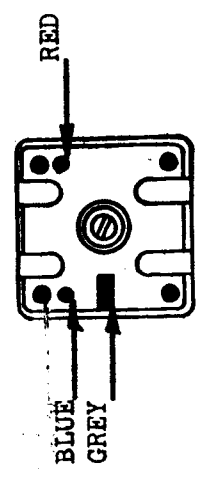
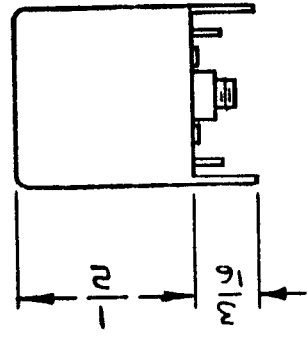
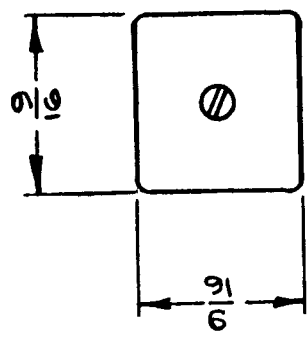
UNLESS OTHERWISE SPECIFIED DIMENSIONS ARE IN INCHES AND INCLUDE CHEMICALLY APPLIED OR PLATED FINISHES

TOLERANCES
DECIMALS
X \pm .05
.XX \pm .01
.XXX \pm .005

CODE
A

2-A-3920

REQ. PER UNIT	1	MODEL	VLRB-1	USED ON	ASSY. NO.	A-3681	DATE	3-17-65	A C 193
---------------	---	-------	--------	---------	-----------	--------	------	---------	---------

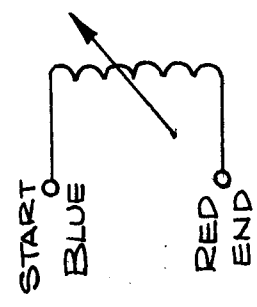


ELECTRICAL SPECS.
(WITH SLUG INSERTED)

OPERATING FREQUENCY:
INDUCTANCE @ 790 KCS
PRIMARY: 820 μ h +20 μ h
SECONDARY: NOT RATED
"Q" (PRIMARY) @ 200 KCS: >65

MECHANICAL SPEC.

TURN
PRIMARY: 250
SECONDARY: *R*
COLOR CODE: GREY
CASE: COPPER CAN
CASE FINISH: TIN-PLATED
QUANTITY TERM: -4
MATERIAL:
CORE & SLUG: POWDERED IRON



SCHEMATIC DIAGRAM

REQ. ITEM	PART NO.	DESCRIPTION	SYMBOL
<i>af</i>		THE TECHNICAL MATERIEL CORP. MAMARONECK. NEW YORK	
	STOCK SIZE		
	MATERIAL	COIL, RF, ADJUSTABLE	
<i>af</i>		<i>H. Austin</i>	<i>P. Austin</i>
	TYPE & TEMPER	HEAT TREAT. SPEC.	3-29-65
	FINISH & SPEC. NO.	ELEC. DES. APP.	MECH. DES. APP.
			AC 193
			FINAL APPROVAL

ORIGINAL RELEASE FOR PRODUCTION

EXPER. RELEASE

UNLESS OTHERWISE SPECIFIED DIMENSIONS ARE IN INCHES AND INCLUDE CHEMICALLY APPLIED OR PLATED FINISHES

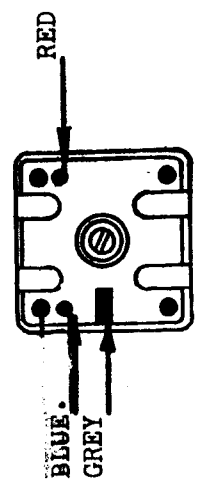
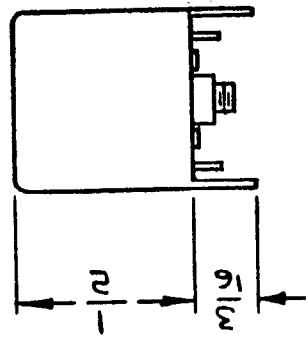
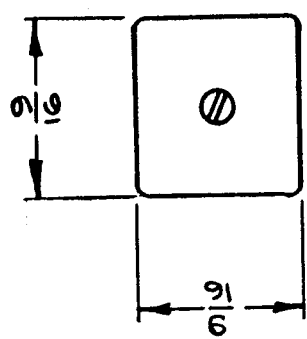
DECIMALS
X $\pm .05$
XX $\pm .01$
XXX $\pm .005$

TOLERANCES

2-A-3921

CODE A

REQ. PER UNIT	USED ON	DATE
1	AC 194	
MODEL	ASSY. NO.	DATE
VLRB-1	A-3681	3-17-65

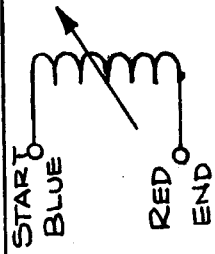


ELECTRICAL SPECS.
(WITH SLUG INSERTED)

OPERATING FREQUENCY:
INDUCTANCE @ 790 KCS
PRIMARY: 446 μ h \pm 10 μ h
SECONDARY: NOT RATED
"Q" (PRIMARY) @ 250 KCS: >60

MECHANICAL SPEC.

URNS
PRIMARY: 198
SECONDARY: *198*
COLOR CODE: GREY
CASE: COPPER CAN
CASE FINISH: TIN-PLATED
QUANTITY TERM: *100*
MATERIAL:
CORE & SLUG: POWDERED IRON



SCHEMATIC DIAGRAM

REQ. ITEM	PART NO.	DESCRIPTION	SYMBOL
		THE TECHNICAL MATERIEL CORP. MAMARONECK. NEW YORK	
		COIL, RF, ADJUSTABLE	
		MATERIAL	
		TYPE & TEMPER	
		HEAT TREAT. SPEC.	
		FINISH & SPEC. NO.	
		DATE	
		CH. NO.	
		DRAFTS	
		CHECKER	
		ENG. APP.	
		SCALE	
		CODE	
		TOLERANCES	
		FRACTIONS	
		\pm 1/64	
		ANGLES	
		\pm 0° 30'	
		DECIMALS	
		X \pm .05	
		.XX \pm .01	
		.XXX \pm .005	
		UNLESS OTHERWISE SPECIFIED DIMENSIONS ARE IN INCHES AND INCLUDE CHEMICALLY APPLIED OR PLATED FINISHES	
		ORIGINAL RELEASE FOR PRODUCTION	
		EXPER. RELEASE	
		DATE	
		CH. NO.	
		DRAFTS	
		CHECKER	
		ENG. APP.	
		TYPE & TEMPER	
		HEAT TREAT. SPEC.	
		FINISH & SPEC. NO.	
		19 AUGUST	
		3-29-65	
		CHECKED	
		FINAL APPROVAL	
		AC 194	

